

# GREEN ARTERY PERIMETER TRAIL

## *SEGMENT E*

### Virtual Public Webinar



Althea McDavid, E.I.  
Host/Organizer



Nina Mabileau, E.I.  
Project Manager



Calvin Hardie, P.E.  
Capital Projects Manager



Bruce Landis, P.E., AICP  
Design Project Manager



Gabriel Gonzalez Jr, E.I.  
Project Engineer



Theo Petritsch, P.E., PTOE  
Safety Design Engineer



Nick Griffiths, P.E.  
Drainage Engineer



Ricky Peterika  
Arborist/Landscape Architect



# **Title VI of the Civil Rights Act of 1964: Discrimination in Government Programs and Assistance**

No person shall, on the basis of his or her race, color, or national origin, be excluded from participation in, be denied the benefits of, or be subjected to discrimination under any program or activity receiving Federal financial assistance pursuant to the requirements of Title VI of the 1964 Civil Rights Act.

The Mayor and City Council value diversity and welcomes input from all interested parties. Moreover, the City does not tolerate discrimination in any of its federally assisted programs, services or activities. The City of Tampa will not exclude participation in, deny the benefits of, or subject to discrimination anyone on the grounds of race, color, and national origin.

## **File a Complaint**

Any person who believes that he or she has been subjected to discrimination based upon race, color, and national origin, may file a complaint with the City's Title VI Officer:

**Maurice C. Foster**

**Supervisor, Tampa Office of Human Rights (TOHR)**

**Housing and Community Development Division**

City of Tampa / 4900 W. Lemon St. / Tampa, FL 33609

p: (813)274-5856/ f: (813)274-7941/ e: [Maurice.foster@tampagov.net](mailto:Maurice.foster@tampagov.net)

Please Visit us on the web at: <https://www.tampagov.net/planning-and-development/human-rights> for instructions on how to properly file a complaint.

## **Appeal a Decision**

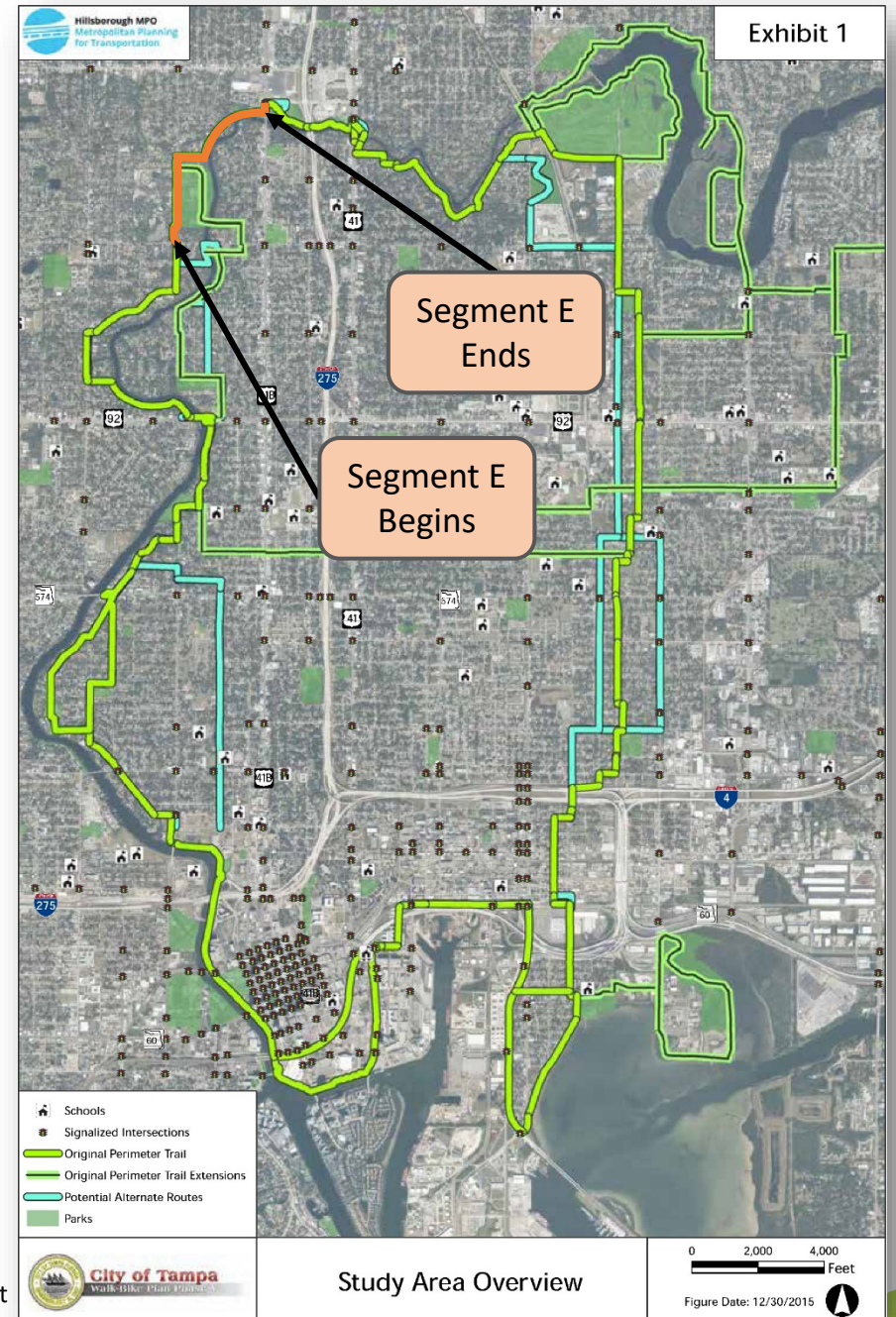
Any person who decides to appeal any decision(s), made with respect to any matter considered at this meeting, is advised that they will need a record of the proceedings. For such a purpose, they may need to hire a court reporter to ensure that a verbatim record of the proceedings is made, which includes the testimony and evidence upon which the appeal is to be based.

# What is the GREEN ARTERY PERIMETER TRAIL?

- **Green ARtery Group** formed in 2010 and began community outreach, gathering support from Tampa neighborhoods

*“...a neighborhood-based effort to identify, enhance, and create trail systems to safely connect paths between valued green spaces.”*
- “Perimeter Trail” concept supported and refined with the help of the Hillsborough Metropolitan Planning Organization, Planning, and Transportation Divisions of the City of Tampa
- *Tampa Walk-Bike Plan Phases 1-5* are released from 2011-2016 to evaluate feasibility
- Planned 22 miles of pedestrian/bicycle network connecting 22 neighborhood groups around Central Tampa
- First segments funded for design between 2019-2020

Source: City of Tampa  
Walk-Bike Phase V Draft





## 22 Participating Neighborhood Groups

- Central Park
- Channelside
- Downtown & Downtown Partnership
- East Tampa
- East Ybor
- Hampton Terrace
- Historic Ybor
- Lake Minihaha & Rogers Golf Course
- Live Oaks Square
- Palmetto Beach
- Ridgewood Park
- River Grove
- Riverside Heights
- South Seminole Heights
- Southeast Seminole Heights
- Tampa Heights
- VM Ybor
- Woodland Terrace
- Ybor Heights
- Old Seminole Heights

## Key Stakeholders



Connecting Tampa's Greenspaces

Green ARtery Community Initiative



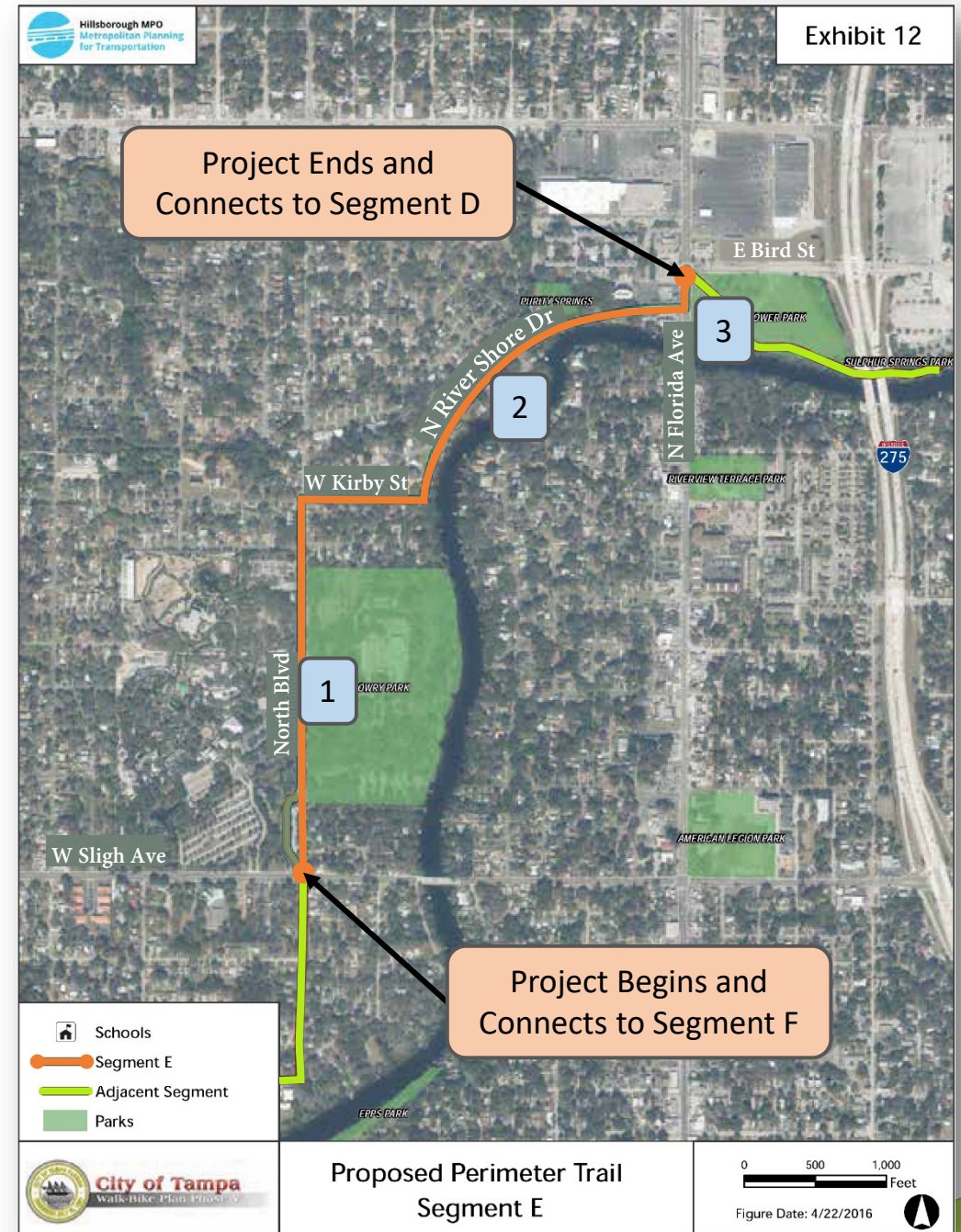
Green ARtery Non-Profit Organization



***Collaborating for the health and well-being of the community***

# What is Segment E?

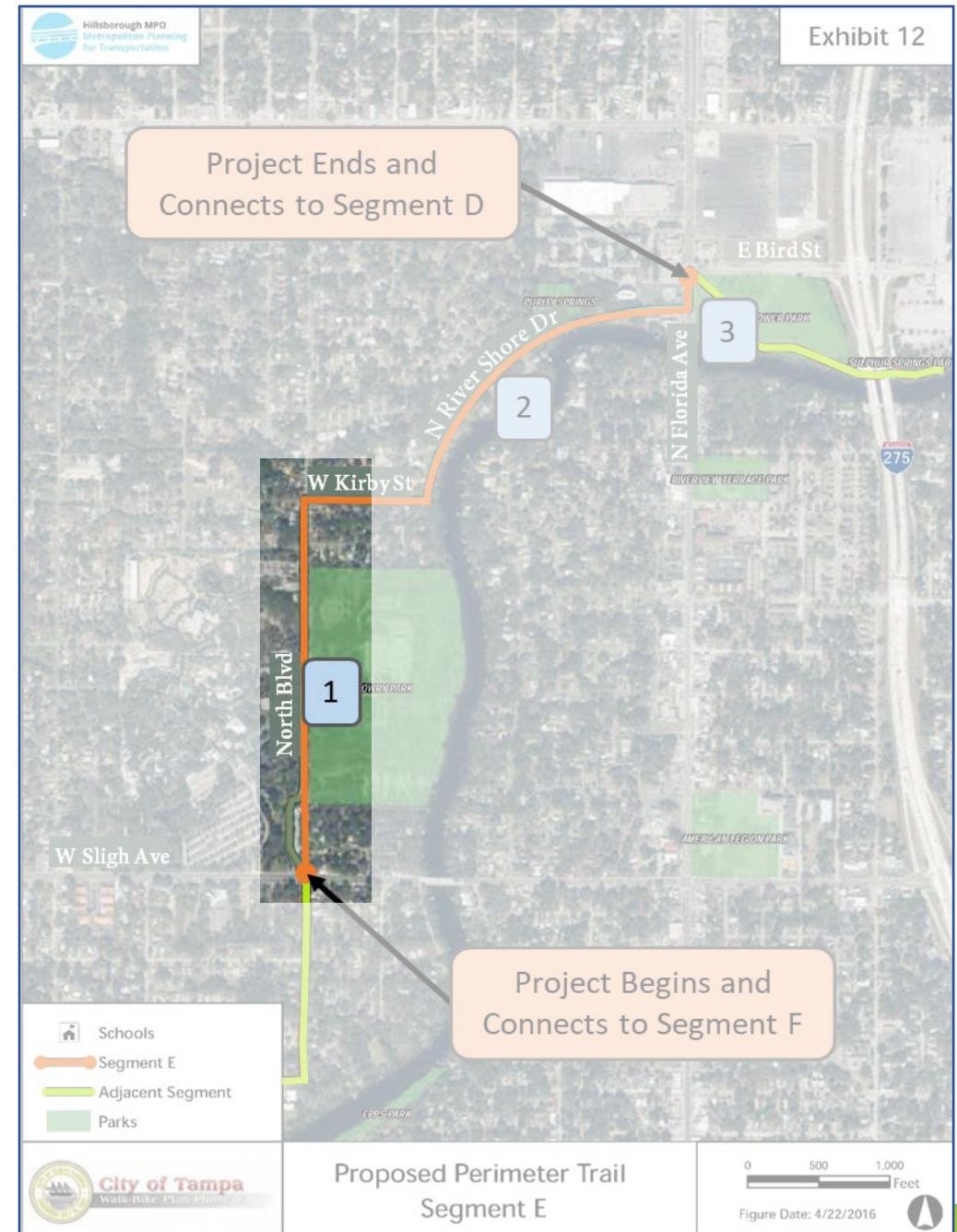
- One of 8 Green ARtery Perimeter Trail Segments (A-H)
- Combination of bicycle boulevard and new sidewalk
- Links Lowry Park & River Tower Park
- **Section 1: North Blvd (Sligh Ave to Kirby St)**  
*Approx. 0.5 miles (2640 feet)*
  - *Bicycle boulevard; Milling & Resurfacing*
- **Section 2: Kirby St & River Shore Dr (North Blvd to Florida Ave)**  
*Approx. 0.64 miles (3379 feet)*
  - *Bicycle boulevard; Speed cushions; New Sidewalk*
- **Section 3: Florida Ave (River Shore Dr to Bird St)**  
*Approx. 0.05 miles (260 feet)*
  - *Widen existing sidewalk*



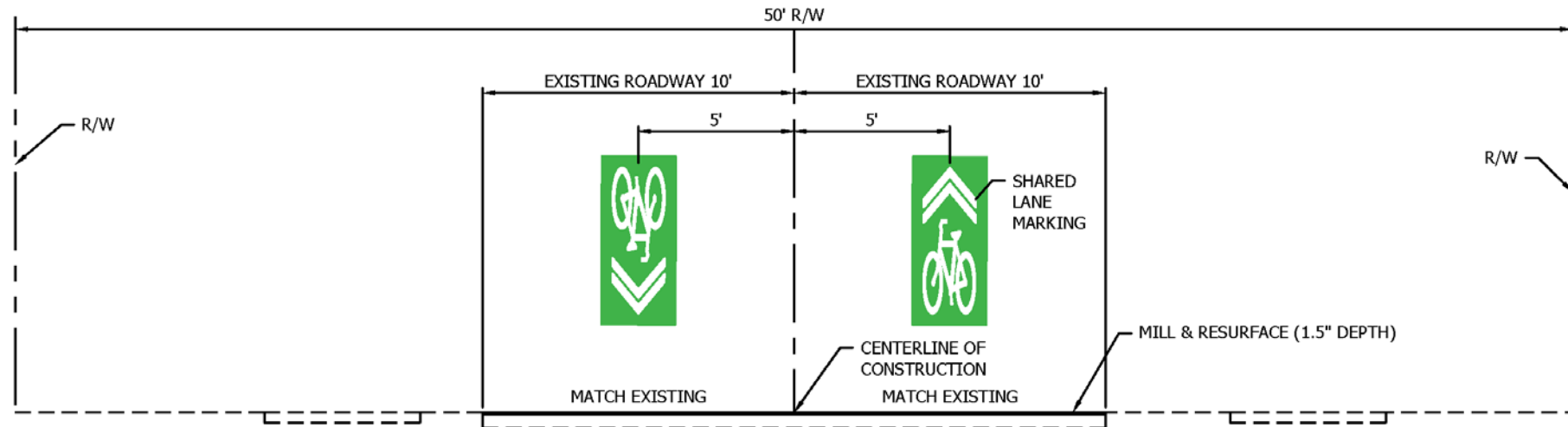


# What is Segment E?

- One of 8 Green ARtery Perimeter Trail Segments (A-H)
- Combination of bicycle boulevard and new sidewalk
- Links Lowry Park & River Tower Park
- **Section 1: North Blvd (Sligh Ave to Kirby St)**  
*Approx. 0.5 miles (2640 feet)*
  - *Bicycle boulevard; Milling & Resurfacing*
- **Section 2: Kirby St & River Shore Dr (North Blvd to Florida Ave)**  
*Approx. 0.64 miles (3379 feet)*
  - *Bicycle boulevard; Speed cushions; New Sidewalk*
- **Section 3: Florida Ave (River Shore Dr to Bird St)**  
*Approx. 0.05 miles (260 feet)*
  - *Widen existing sidewalk*



# TYPICAL CROSS SECTION #1: Along North Boulevard from Sligh Avenue to West Kirby Street

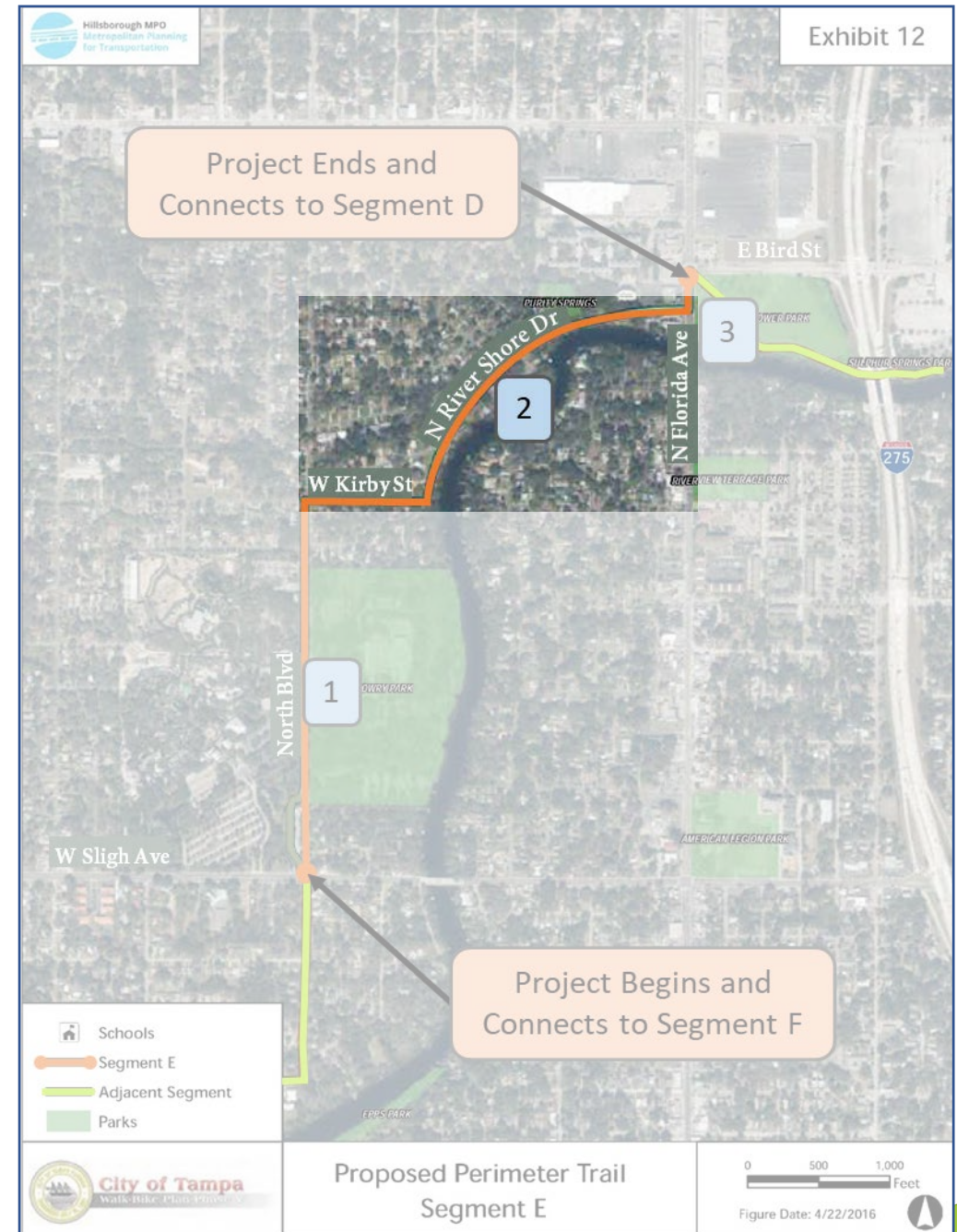


## Bicycle Boulevard:

- New Shared Lane Markings
- New Edge & Centerline Markings
- Resurfaced Pavement
- Reduce Speed Limit to 25 MPH

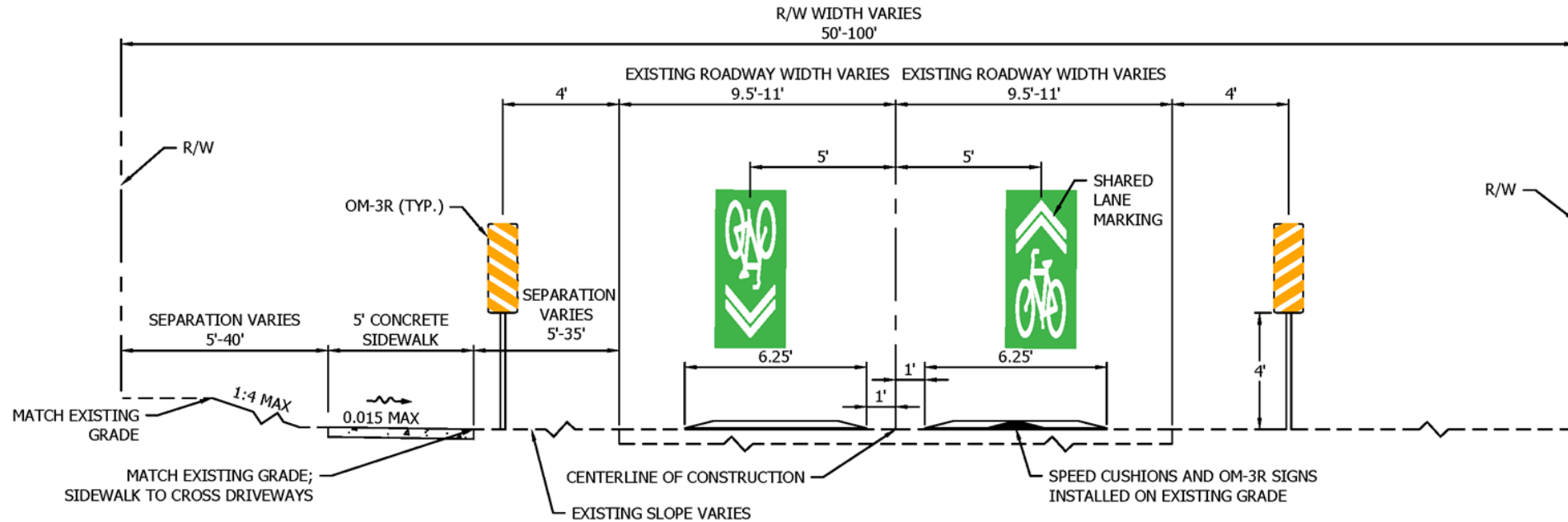
# What is Segment E?

- One of 8 Green ARtery Perimeter Trail Segments (A-H)
- Combination of bicycle boulevard and new sidewalk
- Links Lowry Park & River Tower Park
- **Section 1: North Blvd (Sligh Ave to Kirby St)**  
*Approx. 0.5 miles (2640 feet)*
  - *Bicycle boulevard; Milling & Resurfacing*
- **Section 2: Kirby St & River Shore Dr (North Blvd to Florida Ave)**  
*Approx. 0.64 miles (3379 feet)*
  - *Bicycle boulevard; Speed cushions; New Sidewalk*
- **Section 3: Florida Ave (River Shore Dr to Bird St)**  
*Approx. 0.05 miles (260 feet)*
  - *Widen existing sidewalk*





# TYPICAL CROSS SECTION #2: Along West Kirby Street and North River Shore Drive from North Boulevard to North Florida Avenue



## Bicycle Boulevard:

- New Shared Lane Markings
- New Centerline Markings along curves
- New Speed Cushions
- Reduce Speed Limit to 20 MPH along W Kirby Street
- Reduce Speed Limit to 25 MPH along N River Shore Drive

## Sidewalk:

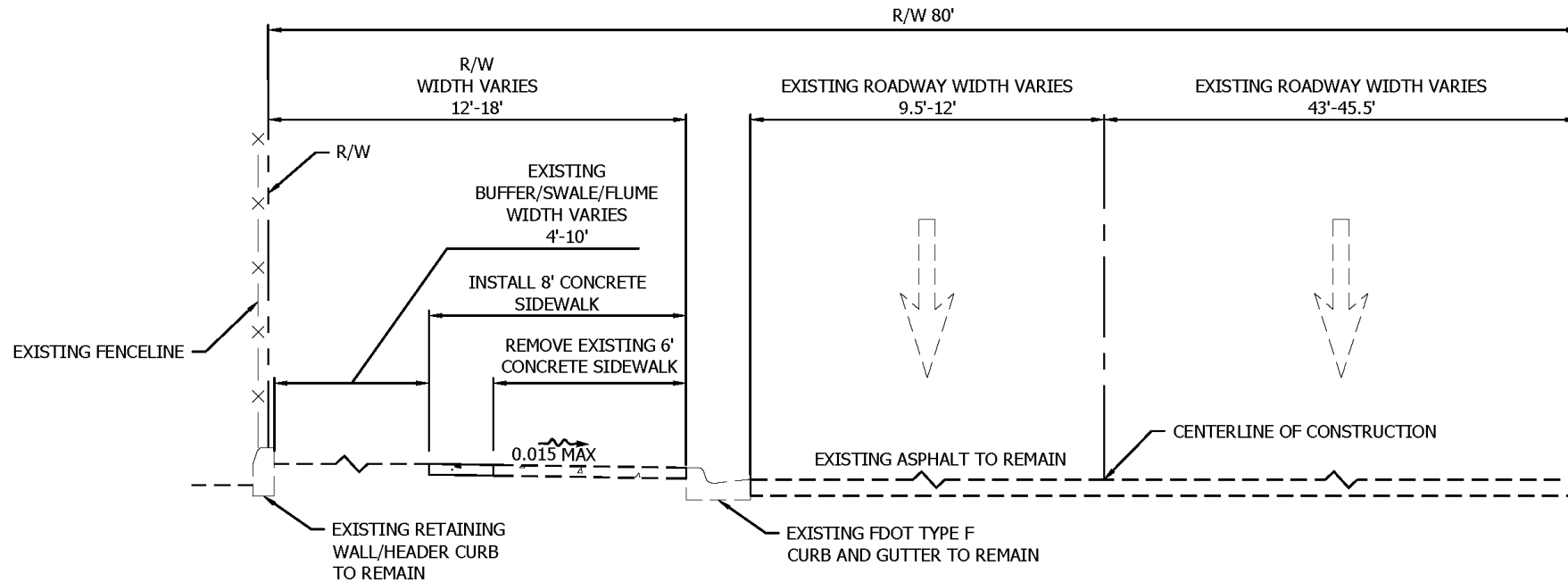
- New Concrete Sidewalk

# What is Segment E?

- One of 8 Green ARtery Perimeter Trail Segments (A-H)
- Combination of bicycle boulevard and new sidewalk
- Links Lowry Park & River Tower Park
- **Section 1: North Blvd** (Sligh Ave to Kirby St)  
*Approx. 0.5 miles (2640 feet)*
  - *Bicycle boulevard; Milling & Resurfacing*
- **Section 2: Kirby St & River Shore Dr** (North Blvd to Florida Ave)  
*Approx. 0.64 miles (3379 feet)*
  - *Bicycle boulevard; Speed cushions; New Sidewalk*
- **Section 3: Florida Ave** (River Shore Dr to Bird St)  
*Approx. 0.05 miles (260 feet)*
  - *Widen existing sidewalk*



# TYPICAL CROSS SECTION #3: Along North Florida Avenue from North River Shore Drive to East Bird Street



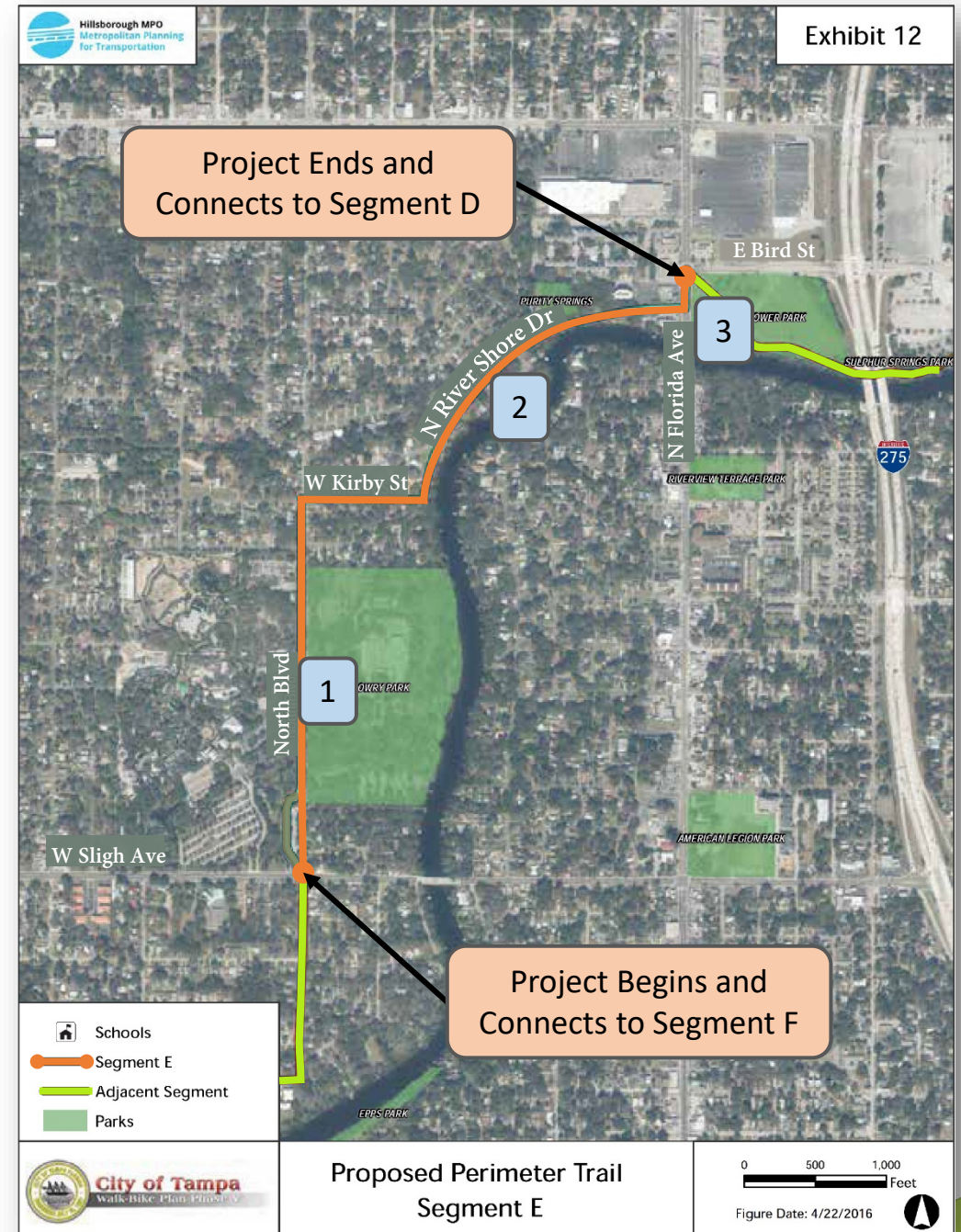
## Sidewalk:

- Widen Existing Sidewalk from 6' to 8'

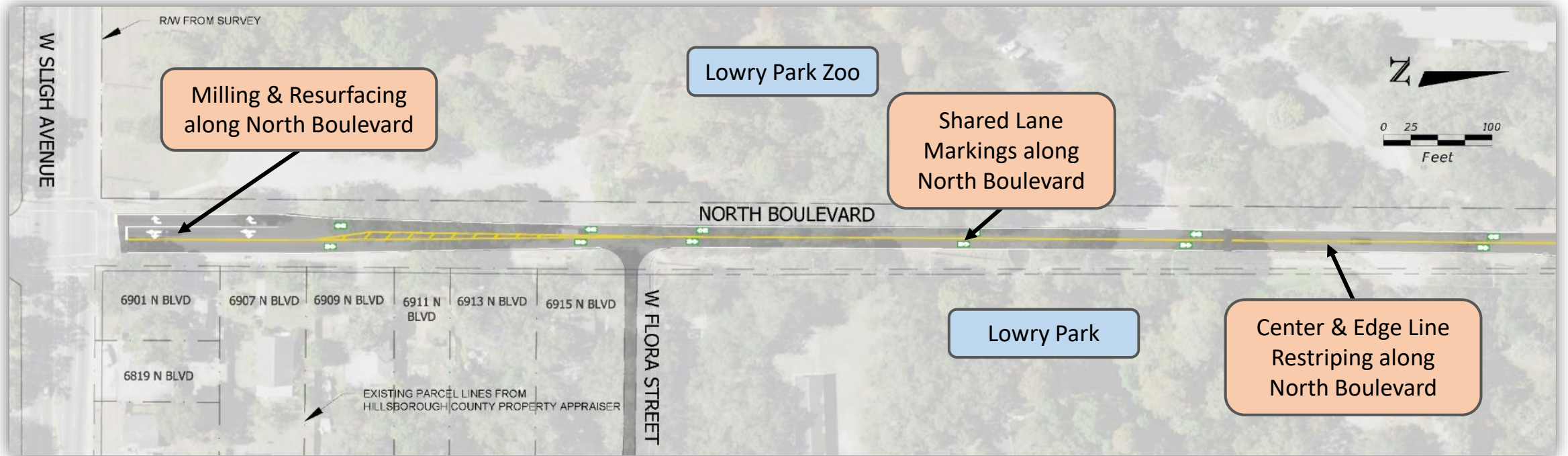


# What is Segment E?

- One of 8 Green ARtery Perimeter Trail Segments (A-H)
- Combination of bicycle boulevard and new sidewalk
- Links Lowry Park & River Tower Park
- **Section 1: North Blvd** (Sligh Ave to Kirby St)  
*Approx. 0.5 miles (2640 feet)*
  - *Bicycle boulevard; Milling & Resurfacing*
- **Section 2: Kirby St & River Shore Dr** (North Blvd to Florida Ave)  
*Approx. 0.64 miles (3379 feet)*
  - *Bicycle boulevard; Speed cushions; New Sidewalk*
- **Section 3: Florida Ave** (River Shore Dr to Bird St)  
*Approx. 0.05 miles (260 feet)*
  - *Widen existing sidewalk*

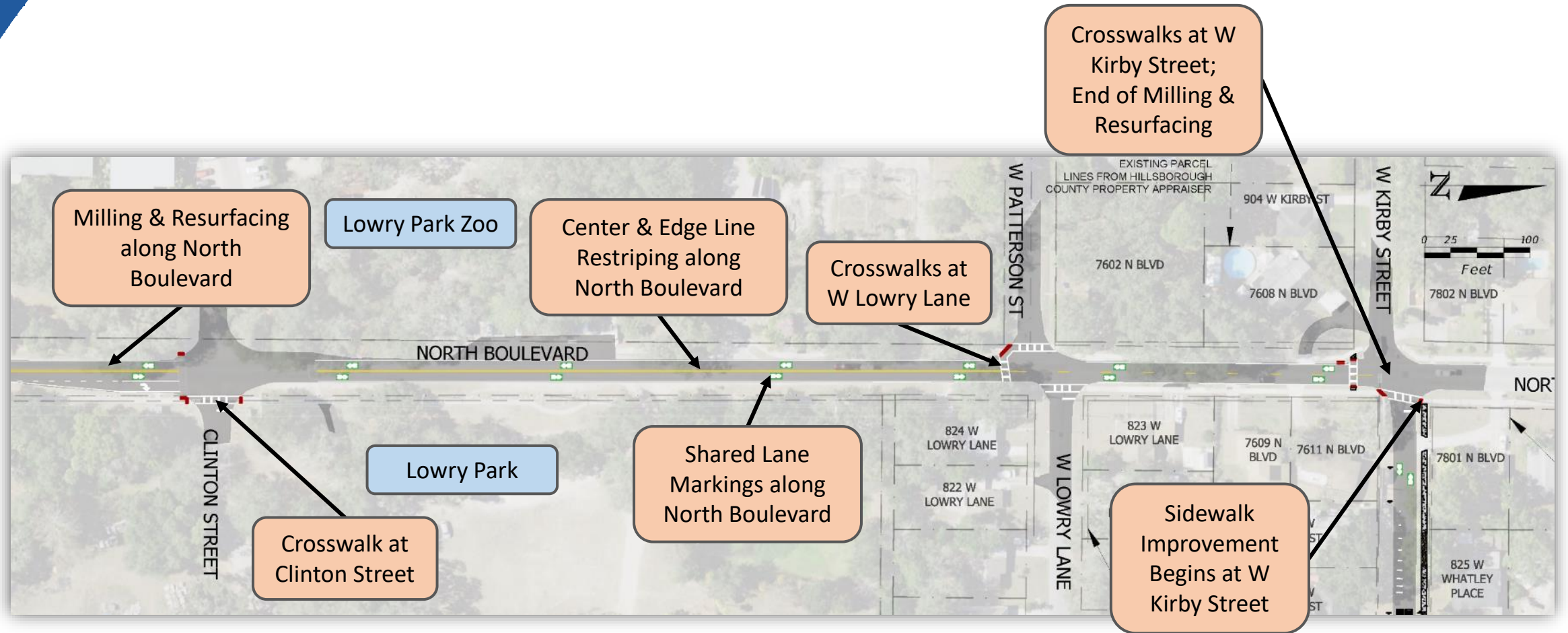


# PROJECT HIGHLIGHTS: North Boulevard



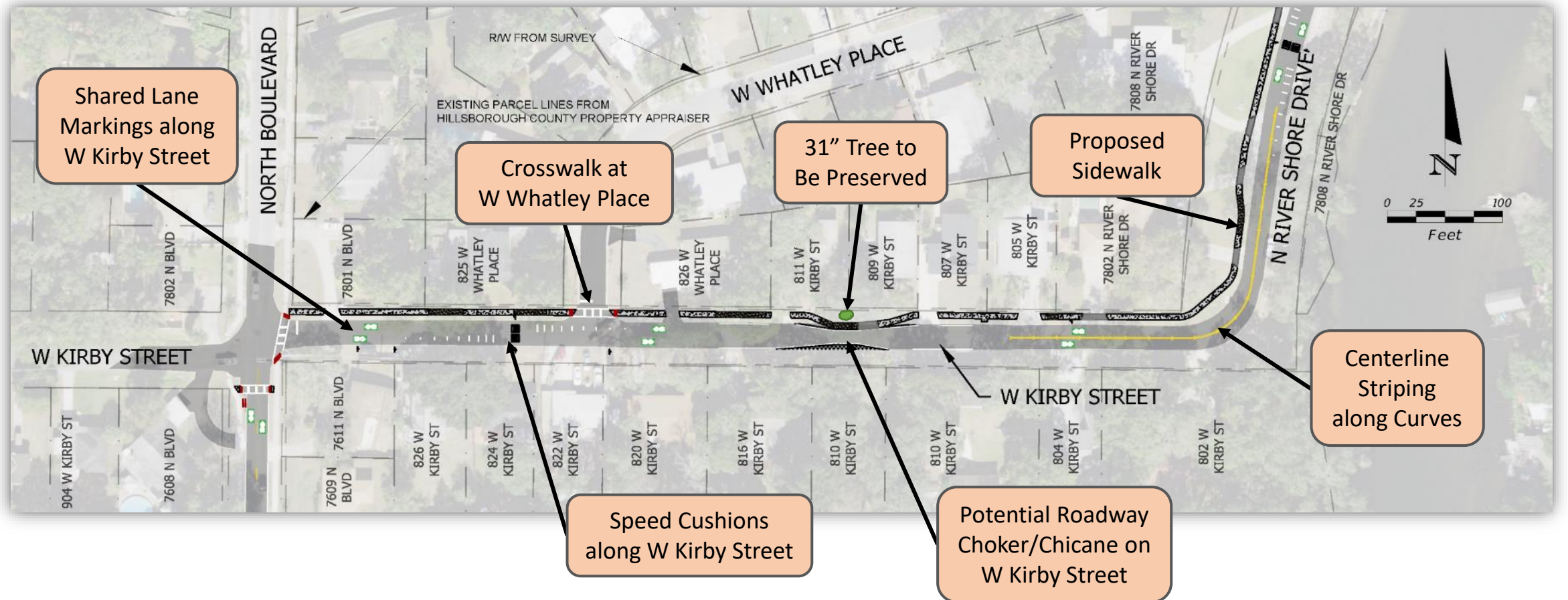


# PROJECT HIGHLIGHTS: North Boulevard (Continued...)

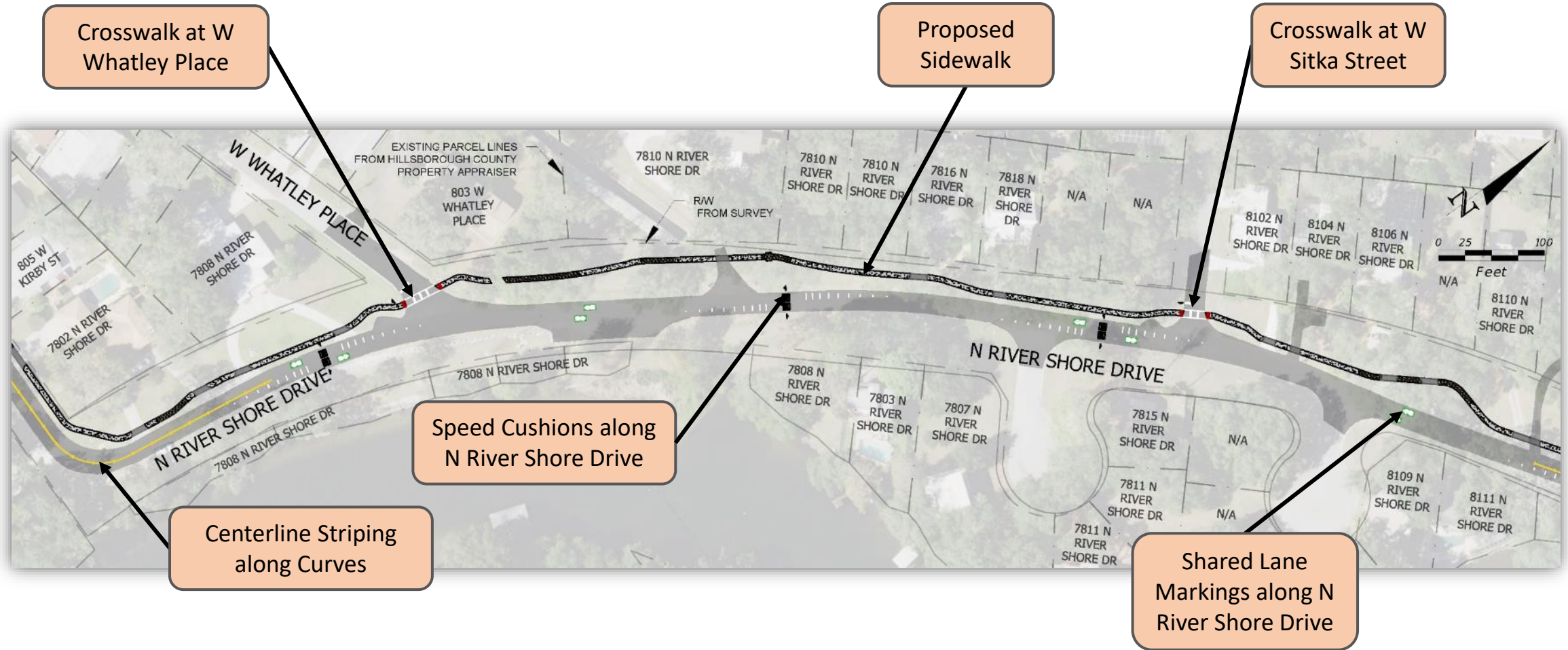




# PROJECT HIGHLIGHTS: West Kirby Street

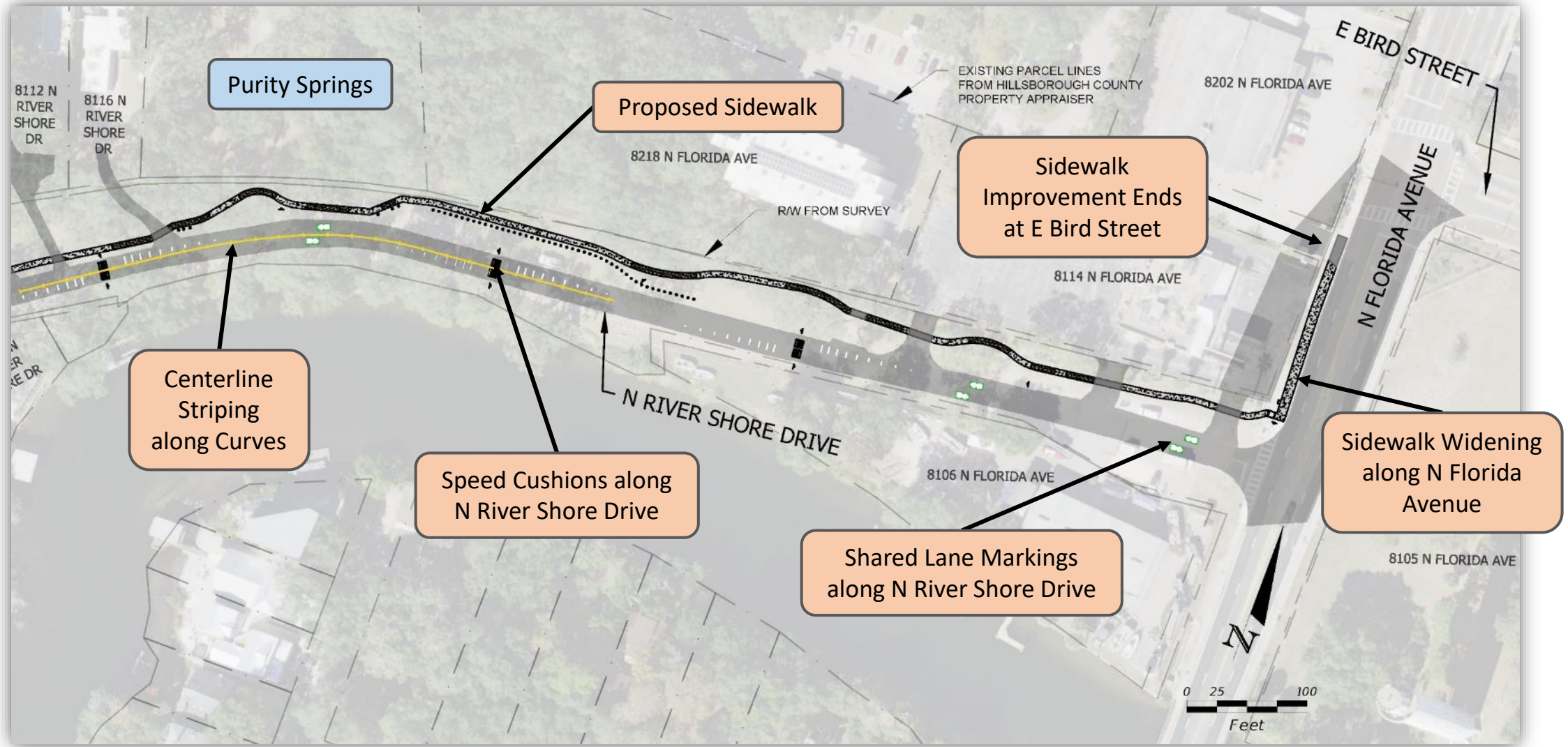


# PROJECT HIGHLIGHTS: North River Shore Drive





# PROJECT HIGHLIGHTS: North River Shore Drive and North Florida Avenue

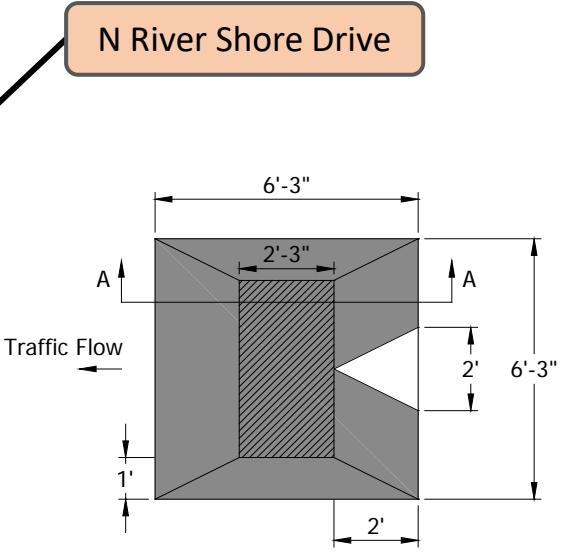
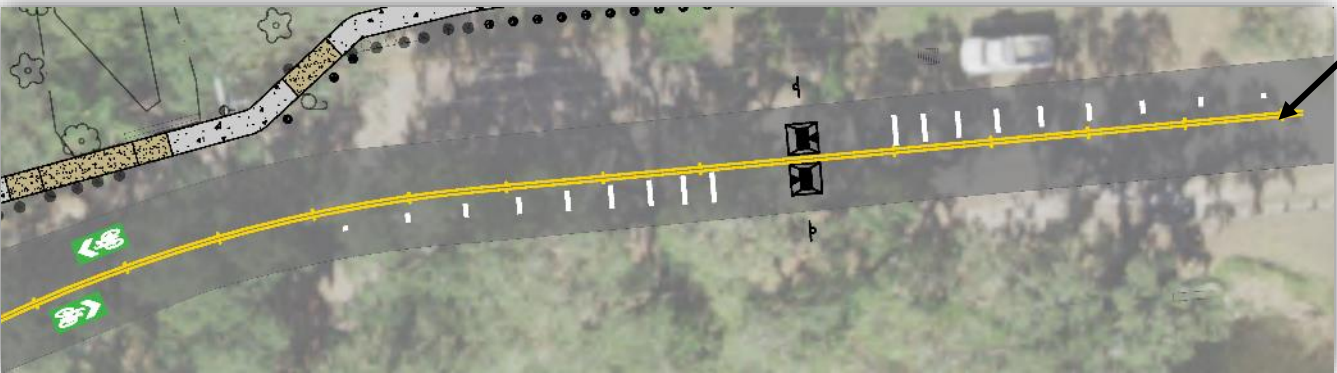




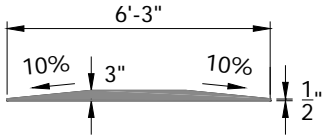
# TRAFFIC CALMING

## Speed Cushions

### Speed Cushion Placement



Speed Cushion Sizing Detail



Section A-A



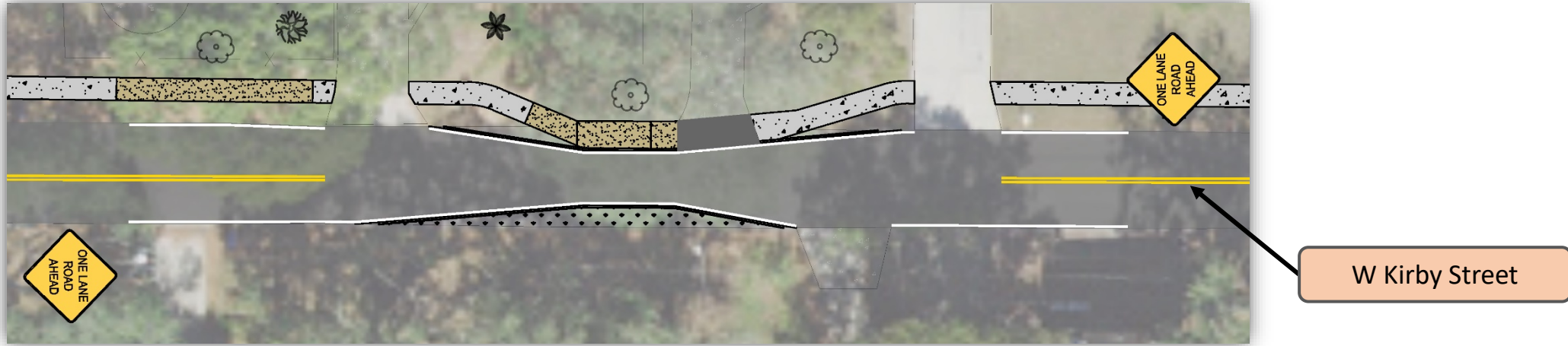
Speed Cushion Warning Sign



Source: Google Images

## TRAFFIC CALMING

# Option "A" – Speed Choker



### Benefits:

- Encourage lower speed through reverse curves and one-lane travel
- Contained within existing pavement
- Preserve vertical profile
- Implemented over a relatively short distance

### Drawbacks:

- Unusual (one-way) condition
- Causes bicyclists to share lane
- Localized restriction of potential on-street parking



Source: Google Images

## TRAFFIC CALMING

# Option "B" – Chicanes



### Benefits:

- Encourage lower speed through one-lane travel
- Contained within existing pavement
- Preserve vertical profile
- Can implement over multiple spread-out curb extensions

### Drawbacks:

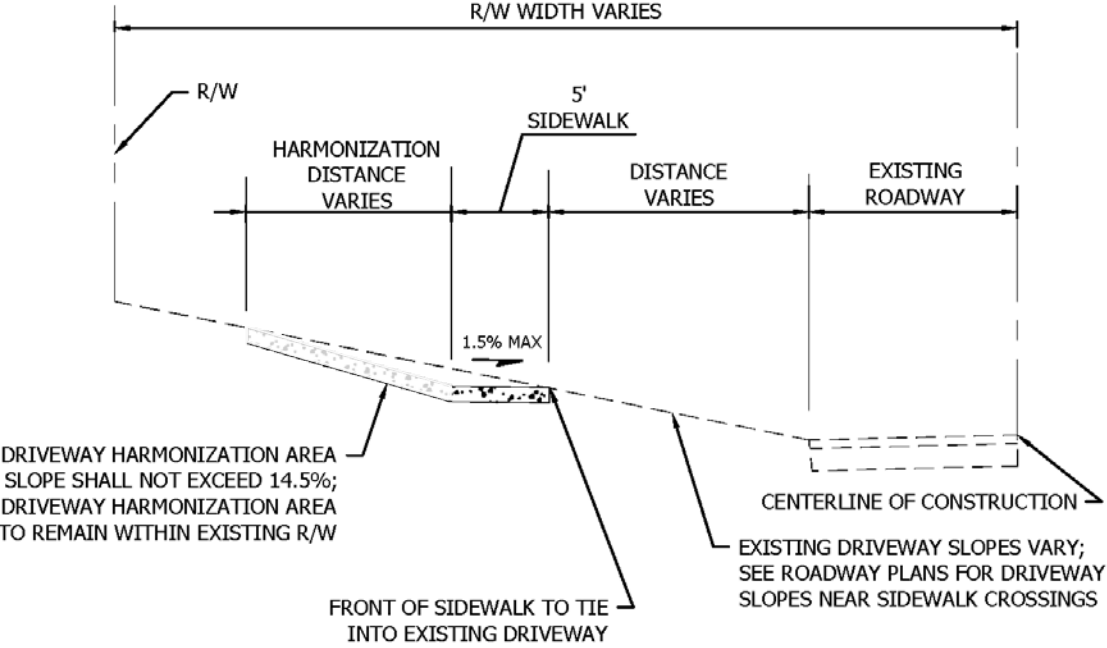
- Unusual (one-way) condition
- Longer distance of reduced potential for on-street parking



Source: FHWA



# SIDEWALK CROSSINGS AT DRIVEWAYS



Source: Google Images

Sidewalk Driveway Crossing & Harmonization Detail

# POTENTIAL FUTURE AMENITIES



**Parks & Recreation**  
CITY OF TAMPA



Wayfinding & Branding



Trash Cans



Source: Google Images

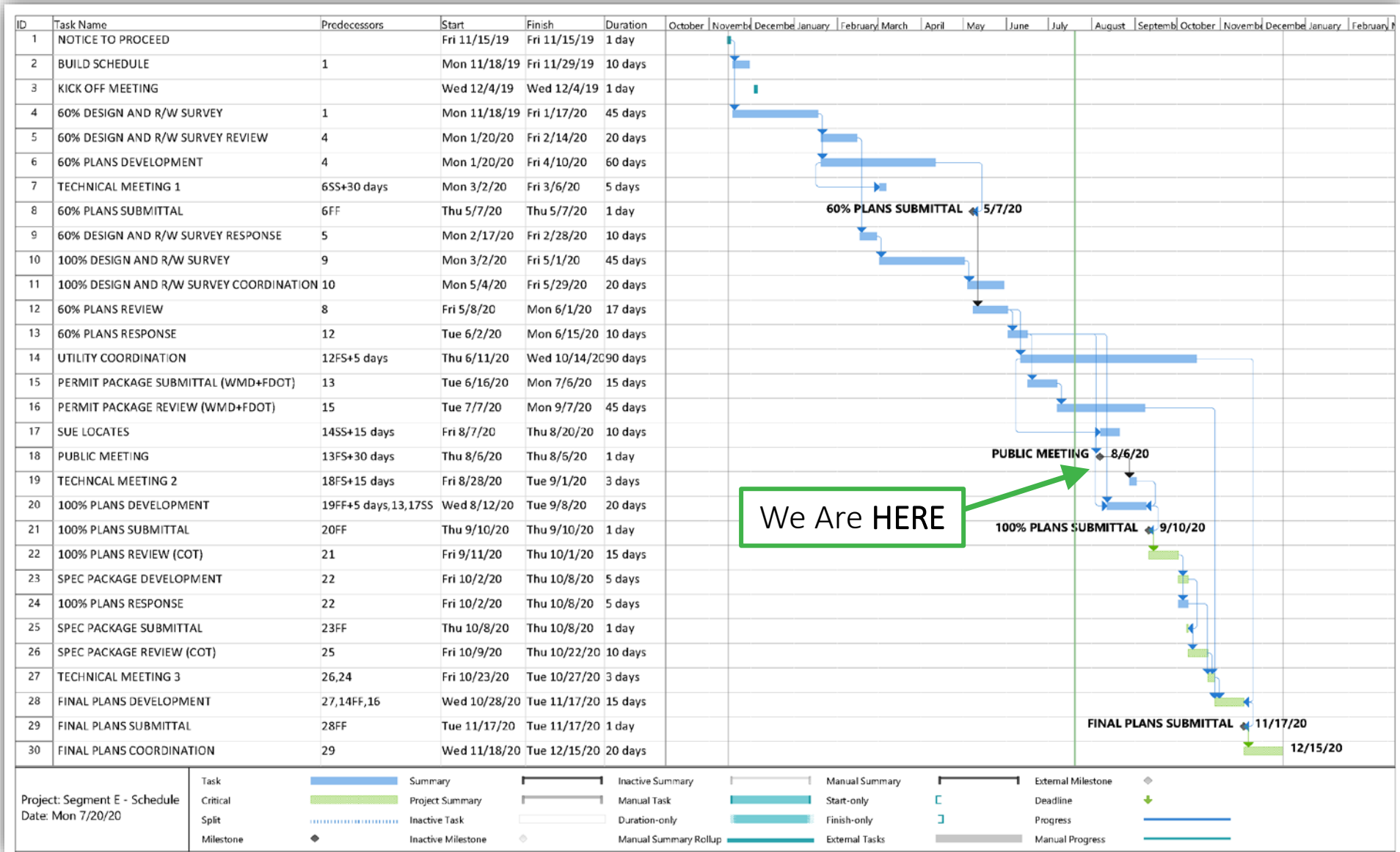
Benches



Source: City of Tampa Parks & Recreation

Future coordination with Tampa Parks & Recreation to include...

# PROJECT DESIGN SCHEDULE





# PROJECT FUNDING & CONSTRUCTION

2018

Voters pass Hillsborough Countywide Surtax for Transportation Improvements.

2019

First Green ARtery Perimeter Trail segments funded for design as part of the Fiscal Year 2020 Project Plan.

2020+

Hillsborough Countywide Surtax challenged in courts and is currently pending action by Florida Supreme Court (**Feb 2020**). City of Tampa seeking other funds to begin design of *Segment D* and construction of *Segment E* in future years (**2020+**).

Approximate Construction Time: 4 Months

# Thank You

To share your comments and ensure they will be included in the public record please contact Nina Mabileau, E.I. before August 20<sup>th</sup>, 2020 at [GreenARTery-SegmentEProject@tampagov.net](mailto:GreenARTery-SegmentEProject@tampagov.net)

