



City of Tampa
Jane Castor, Mayor

Contract Administration
Richard Mutterback, Director
306 East Jackson Street, 4N
Tampa, FL 33602
Office (813) 274-8116
Fax: (813) 274-7368

ADDENDUM 4
Via E-Mail
DATE: March 13, 2025

Contract: 24-C-00039; Manhattan Avenue – Vasconia to Obispo SW Improvements

Bidders on the above referenced project are hereby notified that the following addendum is made to the Contract Documents. BIDS TO BE SUBMITTED SHALL CONFORM TO THIS NOTICE.

Item 1: RFI - • On Plan Sheet 85, there is direction to remove a run of existing 8" sanitary sewer main as well as remove an existing manhole. However, there are no pay items to account for this work. Can you direct us where to include the cost of this work or add bid items to the bid form to account for it?

RFI response Regarding Plan Sheet 85: Please see the revised plan sheet 85 for the notes to be included for the WW manhole T-lock liner repair.

Item 2: RFI - • Replace the Contract Pay Items section with attached.

Item 3: RFI - • Replace all P-Pages with attached P-Pages

Item 4: RFI - • Missing DMI-10-20-Form-Solicit-Utilize-All-Subcontractors_ REV11

Item 5: Replace plans with the attached dated March 11, 2025

Item 6: In the Water Contract Items section of the Specifications, the Item Descriptions provided in C21.0 Ductile Iron and PVC Pipe, Fittings, Tap do not match what is provided in the Bid Proposal form, however the Item Numbers do match. Is this spec still to be used for items 2106 & 2108 on the bid form?

RFI response The Water Contract Pay Items and Bid Proposal forms have been updated to match consistently.

Item 7: In the Water Contract Items section of the Specifications, the Item Descriptions provided in C25.0 Removal & Abandonment of Pipe do not match what is provided in the Bid Proposal form, however the Item Numbers do match. The item description in the spec state that the pay item is for pipe 3" and small in diameter but the bid form does not provide any size designation. Are we to bid all pipe removal under this pay item regardless of the pipe size?

RFI response: The Water Contract Pay Items and Bid Proposal forms have been updated to match consistently. Additional pipe size removal has been added to match the plans.

Item 8: In the Water Contract Items section of the Specifications, there is no spec for contract pay items 2501 & 2502 provided on the bid form. Can a measurement and payment spec for these items be provided so we know the scope of work to be included?

RFI response: 2500 & 2501 specifications have been added to the Contract Pay Items as requested.

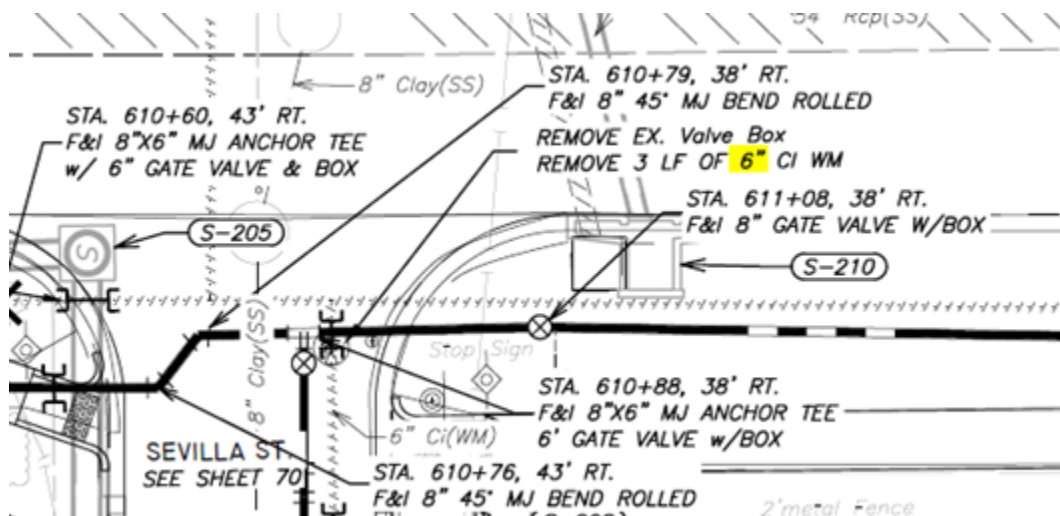
Item 9: On the Water Plan and Profile sheets in the plans, it calls for existing pipe to be grout filled but there does not appear to be any contract items to include the grout filling of these mains. Can direction be provided as to where we are to include grout filling of mains or a pay item(s) be added to the bid form to account for any grouting of mains?

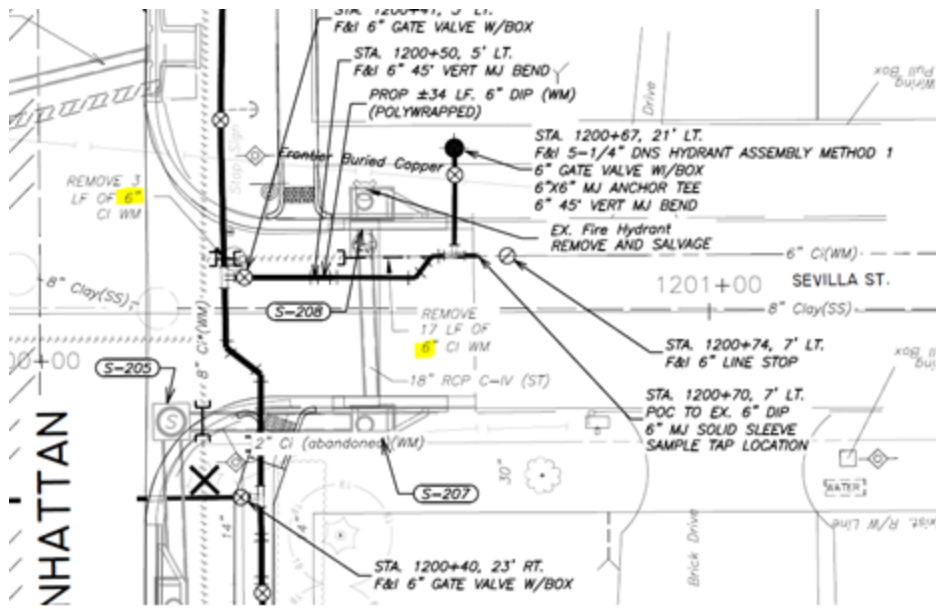
RFI response: Grouting services have been added to both the Water Contract Pay Items and Bid Proposal forms

Item 10: In many locations on the Water plans it either calls out or depicts 8" caps/plugs being installed, however there is no pay item for 8" caps/plugs but there is one for 6" caps/plugs. Can a pay item be added to the bid form to account for these items?

RFI response: Pay Item 2601 has been added to both the Water Contract Pay Items and Bid Proposal forms to account for this service as requested.

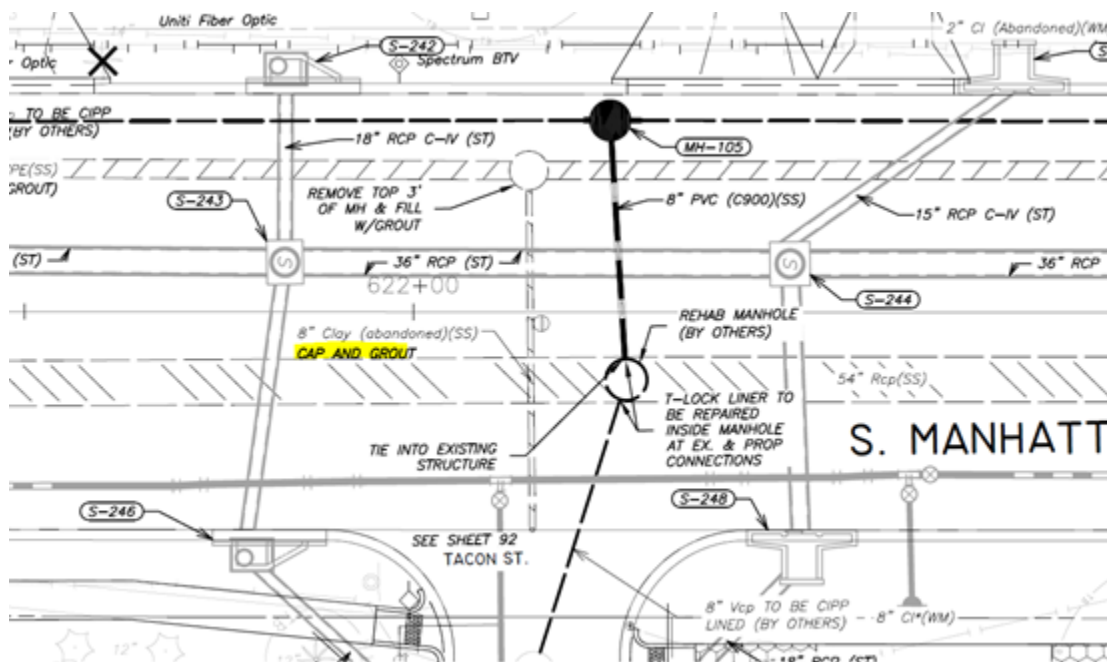
Item 11: On Plan Sheet 63 the existing water main running east down Sevilla St. is called out as both an 8" main and a 6" main. Further, on Sheet 70, this same main is designated as both a 2" main and a 6" main. What is the size of this existing water main running east on Sevilla St.?





RFI response: The plans have been revised to accurately depict the referenced watermain as the existing 6" size it is, all reference to 8" and 2" were inaccurate callouts that have been revised.

Item 12: On Plan Sheet 85, there is direction to remove a run of existing 8" sanitary sewer main as well as remove an existing manhole. However, there are no pay items to account for this work. Can you direct us where to include the cost of this work or add bid items to the bid form to account for it?



RFI response: The noted removal was an inaccurate callout, instead the identified service is to be grouted & capped. The provided Contract Pay Items & Bid Proposal forms have been reformatted to include a Waste Water Pay Items section that include all sanitary related services accounted for including the mentioned grouting.

Item 13: Please depict what areas the City is paying for under the pay items for stabilized base.

RFI response: The listed quantities in the Bid Proposal will all be paid for by the city in relation to stabilized base. The varying quantities provided relate to the different services being provided in this project. The Base materialism broken into 3 portions for the 3 areas of service: the proposed base reshaping along the whole roadway, pipe trench installation for residential roadways (side streets) and pipe trench installation for the Collector/Arterial roadway (Manhattan). Please defer to the detail on Sheet 75 which paints a full picture of the uses of the Base material and where within the project they will apply.

Item 14: Are there any areas that the contractor is performing the stabilized base and or crushed concrete but with no pay (incidental to the pipe)?

RFI response: No. The quantity of base provided in the Bid has been calculated to account for all relevant services with no excess material expected cost expected on the contractor.

Item 15: Please clarify the begin and end of the road, curb, and sidewalk reconstruction.

RFI response: Please refer to Sheets 48 to 56 for the extents of the Roadway, Curb and Sidewalk reconstruction as labeled. Additionally, please refer to Sheet 1 for Legend elements to assist in the clarity of review.

Item 16: The detail on sheet 48 shows that the road will be reconstructed one foot narrower however, this is not indicated on the plans.

RFI response: The 0.5' edge line on both sides of the proposed sections is included in the travel lane width which accounts for the missing 1', with the including of the edge line widths, the overall proposed travel lane maintains the 56' width of the existing condition.

Item 17: The plans also do not show what road, curb or sidewalk remains and what is reconstructed.

RFI response: Please refer to Sheet 48 to 56 for the extents of the Roadway, Curb and Sidewalk reconstruction as labeled. Additionally, please refer to Sheet 1 for Legend elements to assist in the clarity of review. For clarity, the proposed roadway reconstruction extents are denoted by the extents of the proposed light gray asphalt hatch (this covers the base reshaping, pipe trenching and overall asphalt resurfacing) which terminates into proposed mill and resurface hatches. All sidewalk from Sta 608 to 625 along Manhattan are shown as proposed and confirmed to be reconstruction, there are no segments of existing sidewalk to remain within the proposed station range. All curb noted as proposed has clear callouts depicting the beginning and end points of proposed runs with ties into existing.

Item 18: Note 1 on sheet 3 regarding the demolition states that the demolition is incidental, so we need know what to include.

RFI response: In the context of Note 1, any existing infrastructure that impedes the proposed Pipe Trench installation will need to be removed as necessary. The contractor is to determine the extents of this demolition as they layout the Pipe Trench extents following the Design Specifications set in the detail on Sheet 75. No further demolition quantification should be necessary.

All other provisions of the Contract Documents and Specifications not in conflict with this Addendum shall remain in full force and effect. Questions are to be e-mailed to ContractAdministration@tampagov.net.

Jim Greiner

Jim Greiner, P.E., Contract Management Supervisor

STORMWATER CONTRACT PAY ITEMS

C1.00 - CONTINGENCY

The Contractor shall include a \$350,000 contingency sum (Stormwater 250K and Water 100K), to be included as part of the total bid amount for this contract. The contingency is for the purpose of compensating the Contractor for any incidental work that may arise as construction operations proceed and was not addressed as part of the original work portrayed in the Plans and Specifications.

The \$350,000 contingency sum is an upset limit. Any amount of the contingency shall be paid only after negotiations.

Contingency funds shall be disbursed at the discretion of the Engineer. No contingency funds shall be disbursed if there are no contingent items.

<u>Item No.</u>	<u>Description</u>	<u>Unit</u>
100	CONTINGENCY - STORMWATER	NTE
100.1	CONTINGENCY – WATER	NTE

C1.01 - MOBILIZATION

The Contractor shall furnish all equipment, labor, and materials necessary to mobilize his forces as necessary to perform all the work under this Contract.

Work under this section includes bonding and insurance; transportation, and otherwise movement of all personnel, equipment, supplies, materials and incidentals to the project site; safety equipment and first aid supplies, sanitary and other facilities; and all other preconstruction expense necessary for the start of the work, excluding the cost of construction materials, to be constructed under this Contract as shown on the Plans and directed by the Engineer.

Payment for Mobilization will be made at a not to exceed price.

<u>Item No.</u>	<u>Description</u>	<u>Unit</u>
101	MOBILIZATION	NTE

C1.02– MAINTENANCE OF TRAFFIC

The Contractor shall furnish all materials, equipment, and labor to establish and maintain all traffic maintenance devices and personnel as shown on the Plans, specified, and directed by the Engineer.

The work includes installation of all signs, video and photographic preconstruction pictures, structural testing, barricades, lights and flagmen, additional earth excavation, selected fill, temporary wearing surface, temporary bridges, temporary ADA paths, roadway closures and requirements, as-built survey and all appurtenant work complete in place as necessary to control traffic and provide for safety to the public, all in compliance with the Manual on Uniform Traffic Control Devices, "MUTCD," with subsequent revisions and additions, and to the satisfaction of the Engineer. MOT direction shall conform to project Plans and Specific Provisions. Contractor shall provide metal walkways for pedestrian access from on-street parking to residential homes during street closures.

The Contractor will be required to have a licensed Professional Engineer sign and seal a Maintenance of Traffic Plan to be submitted to the City's Right-of-Way Department for permit.

Payment for Maintenance of Traffic will be made at a not to exceed price.

<u>Item No.</u>	<u>Description</u>	<u>Unit</u>
102	MAINTENANCE OF TRAFFIC	NTE

C1.04 - SILT FENCE AND EROSION CONTROL

The Contractor shall furnish all materials, equipment, and labor to establish and maintain all sediment barriers as shown on the Plans, specified, and directed by the Engineer.

Work in this Contract Item includes, but is not limited to, synthetic bales, staked silt fence, and turbidity barrier as specified on the Plans or directed by the Engineer. The sediment barriers shall conform to the latest version of the FDOT Standard Specifications – Workmanship and Materials Section 104 – Prevention, Control, and Abatement of Erosion and Water Pollution.

Payment for Sediment Barriers will be made at the Contract Linear Foot (LF) Price.

<u>Item No.</u>	<u>Description</u>	<u>Unit</u>
104.1	SILT FENCE & EROSION CONTROL	LF
104.2	INLET PROTECTION SYSTEM	EA

C1.05 –ROOT PRUNING AND TREE REMOVAL

The Contractor shall furnish and install all labor, materials, services, permitting, public noticing, equipment and appurtenances to remove existing grand trees and non-grand trees within the limits of construction as shown in the Contract Drawings for removal and properly dispose of material off site. The contractor will also be responsible for tree fund payments in accordance with the City of Tampa as calculated in the contract drawings according to the trees removed.

The Contractor shall furnish and install all labor, materials, services, permitting, public noticing, equipment and appurtenances to prune trees and tree roots of both grand trees and non-grand trees within the limits of construction as shown in the Contract Drawings and properly dispose of material off site.

The work includes, but is not limited to, the following: removal of stumps and brush, pruning of trees and brush, prune the roots of trees and the removal of any undesirable material within the limits of construction as shown in the Contract Drawings. All pruning of trees and roots must be done under the direction of a City Approved Certified Arborist and in coordination with Planning and Development, Natural Resource Division.

Root pruning shall conform to the requirements of the City of Tampa Workmanship and Materials Section 105 – Root Pruning.

Payment for the Tree Removal will be made at the appropriate Contract Unit Price per Each (EA).

Payment for the Tree Fund will be made at the appropriate Contract Unit Price per 2 inch tree replacements calculated (IN/2).

Payment for the Root Pruning will be made at the appropriate Contract Linear Foot (LF) Price

Payment for the Tree Barricades will be made at the appropriate Contract Linear Foot (LF) Price

<u>Item No.</u>	<u>Description</u>	<u>Unit</u>
105.1	ROOT PRUNING	LF

105.2	TREE REMOVAL – 9”-18”	EA
105.3	TREE REMOVAL – 18” +	EA
105.4	CITY TREE FUND PAYMENT INCHES	IN/2
105.5	TREE BARRICADE	LF

C1.20 –EXCAVATION OF UNSUITABLE SOIL & REPLACEMENT OF SUITABLE SOILS

The Contractor shall furnish all materials, equipment, and labor for excavation shown on the Plans, specified, and directed by the Engineer.

Work in this Contract Item includes the excavation required as shown on the Plans. The work also includes all necessary grading, testing, backfilling, sheeting, shoring, bracing, temporary ramps, construction fencing, dewatering, regrading of excavated soil per grading plans, regrading of impacted ponds, clean fill, over excavation of unsuitable (clayey) materials, disposal of surplus excavated material, replacement with suitable soils and protection of adjacent facilities, sodding and all appurtenant work, complete and in place.

The work shall conform to the City of Tampa Standard Specifications – Workmanship and Materials Section 1 – Excavation – Earth and Rock and Section 108- Dewatering.

The Contractor shall refer to the latest version of FDOT Workmanship and Materials Section 120 – Excavation and Embankment.

Disposal of unsuitable materials shall conform to the requirements of the City Standard Specifications for Workmanship and Materials Section 113 – Disposal of Debris and Section 108- Dewatering.

Payment for removal of unsuitable soils and replacement will be made at the Contract Item Unit Price per Cubic Yard (CY).

<u>Item No.</u>	<u>Description</u>	<u>Unit</u>
120.2	REMOVAL OF UNSUITABLE MATERIAL & REPLACEMENT OF SUITABLE SOIL	CY

C1.217– GROUTING AND PLUGGING OF EXISTING STORM PIPE

The Contractor shall furnish and install all labor, materials, services, equipment and appurtenances to access pipe at both ends, plug, grout and abandon the existing stormpipes that are located in the project area which may include areas outside the limits of new construction as shown on the Plans, specified, and directed by the Engineer.

The work includes, but is not limited to, the following: grouting and abandonment of existing stormpipe or sanitary pipe and structures in the project area which may include areas outside the limits of the new construction of pipe areas as shown in the Contract Drawings.

Grouting shall conform to the FDOT Workmanship and Materials Section 121 – Flowable Fill.

Payment for the grouting and abandonment of existing storm pipe will be made at the appropriate Contract Unit Price per Cubic Yard (EA) and per Linear Foot (LF).

<u>Item No.</u>	<u>Description</u>	<u>Unit</u>
121.7	GROUT EXISTING STORMWATER PIPE 24”	LF

C1.60 – STABILIZATION

The Contractor shall furnish all materials, equipment, and labor for the required stabilization of subgrade within the trench for installation of the stormwater pipe on the Plans, specified, and directed by the Engineer.

Items included in this Contract Item include, but are not limited to, the material, equipment and labor necessary to stabilize designated portions of the roadbed to provide a firm and unyielding subgrade, having the required bearing value specified as specified on the Plans and shall conform to the latest version of the FDOT Standard Specifications – Workmanship and Materials Section 160 – Stabilization.

Payment for Stabilization will be made at the appropriate Contract Square Yard (SY) Price.

<u>Item No.</u>	<u>Description</u>	<u>Unit</u>
160.1	STABILIZATION 36" (LBR40) TYPE B (STORM – TRENCH – RESIDENTIAL)	SY
160.2	STABILIZATION 18" (LBR40) TYPE B (STORM – TRENCH – COLLECTOR/ARTERIAL)	SY
160.3	STABILIZATION 36" (LBR40) TYPE B (WATER – TRENCH)	SY
160.4	STABILIZATION 57" (LBR40) TYPE B (SEWER – TRENCH)	SY

C2.85 – OPTIONAL BASE

The Contractor shall furnish all materials, equipment, and labor for the required installation of base material shown on the Plans, specified, and directed by the Engineer.

Items included in this Contract Item include, but are not limited to, the material, equipment and labor necessary to construct a base course composed of one of the optional materials as specified on the Plans and shall conform to the latest version of the FDOT Standard Specifications – Workmanship and Materials Section 285 – Optional Base.

Payment for Optional Base will be made at the appropriate Contract Square Yard (SY) Price.

<u>Item No.</u>	<u>Description</u>	<u>Unit</u>
285.1	OPTIONAL BASE 8" (RESIDENTIAL)	SY
285.2	OPTIONAL BASE 12" (COLLECTOR/ARTERIAL)	SY
285.3	OPTIONAL BASE 2.25" (BASE RESHAPING)	SY

C3.27 - MILLING OF ROADWAY

The Contractor shall furnish all equipment, hauling and labor for the required removal of existing asphalt by milling material shown on the Plans, specified, and directed by the Engineer.

Items included in this Contract Item include, but are not limited to equipment and labor necessary to mill roadway material as specified on the Plans and shall conform to the latest version of the FDOT Standard Specifications – Workmanship and Materials Section 327 – Milling. The existing pavement shall be milled two inches unless otherwise specified on the plans or directed by the Engineer.

The Engineer may require re-milling of any area where a surface lamination causes a non-uniform texture to occur.

Payment for Milling will be made at the appropriate Contract Square Yard (SY) Price.

<u>Item No.</u>	<u>Description</u>	<u>Unit</u>
327	1" MILLING	SY

C3.34 - SUPERPAVE ASPHALTIC CONCRETE, SP12.5

The Contractor shall furnish all materials, equipment, and labor for the required installation of asphalt material shown on the Plans, specified, and directed by the Engineer.

Items included in this Contract Item include, but are not limited to, the material, equipment and labor necessary to construct a superpave asphalt concrete pavement with the type of mixture specified on the Plans and shall conform to the latest version of the FDOT Standard Specifications – Workmanship and Materials Section 334 – Superpave Asphaltic Concrete.

Restoration of City Streets shall conform to the requirements of the City Standard Specifications for Workmanship and Materials Section 16 – Restoration of Street Pavements.

Payment for Superpave Asphaltic Concrete, SP12.5 will be made at the appropriate Contract Item Unit Price per Ton (TN) of material placed.

<u>Item No.</u>	<u>Description</u>	<u>Unit</u>
334.1	SUPERPAVE ASPHALTIC CONCRETE, SP12.5 (2.5" – COLLECTOR/ARTERIAL)	TN
334.2	SUPERPAVE ASPHALTIC CONCRETE, SP12.5 (2" – RESIDENTIAL)	TN

C3.37 - ASPHALT CONCRETE FRICTION COURSE, SP12.5

The Contractor shall furnish all materials, equipment, and labor for the required installation of asphalt material shown on the Plans, specified, and directed by the Engineer.

Items included in this Contract Item include, but are not limited to, the material, equipment and labor necessary to construct a Asphalt Concrete Friction Course pavement with the type of mixture specified on the Plans and shall conform to the latest version of the FDOT Standard Specifications – Workmanship and Materials Section 337 – Asphalt Concrete Friction Course.

Restoration of City Streets shall conform to the requirements of the City Standard Specifications for Workmanship and Materials Section 16 – Restoration of Street Pavements.

Payment for Asphalt Concrete Friction Course, SP12.5 will be made at the appropriate Contract Item Unit Price per Ton (TN) of material placed.

<u>Item No.</u>	<u>Description</u>	<u>Unit</u>
337	ASPHALT CONCRETE FRICTION COURSE, SP12.5 (1.5")	TN

C4.25 – STORMWATER INLETS, MANHOLES, AND JUNCTION BOXES

The Contractor shall furnish all materials and equipment, test, construct, install, reconstruct, and maintain the stormwater inlets, stormwater manholes and stormwater junction boxes as shown on the Plans, specified, and directed by the Engineer.

Stormwater inlets, manholes, and City Manholes shall conform to the City of Tampa Stormwater Details and Workmanship and Materials Section 425 – Stormwater Inlets, FDOT W&M Section 425 - Manholes and FDOT Index 200 – Manholes. Manhole frames and covers shall conform to the City of Tampa standards. Grouting annular space in conflict manhole for sanitary shall conform to the FDOT Workmanship and Materials Section 121 – Flowable Fill.

The work includes all testing, excavation, backfilling, limestone screenings, bedding, sheeting, shoring, bracing, dewatering, formwork, castings, brickwork, adjusting structures, removal of pavement, sidewalks, curb and curb gutter, concrete work and reinforcing, all inlet and outlet pipe, making all pipe connections, setting pipe stubs and plugs for future connections, nonpermanent and special temporary pavement replacement, disposal of surplus excavated material, and protection of adjacent facilities, and all appurtenant work, complete and in place.

The Contractor shall furnish and install all labor, materials, services, equipment and appurtenances to demolish and remove the existing storm pipe and structures that are located outside of the excavation trenched limits of the new pipe and structure areas.

The demolition and removal of existing storm structures shall conform to the requirements of the City Standard Specifications for Workmanship and Materials Section 27 – Demolition.

Disposal of debris shall conform to the requirements of the latest version of the City Standard Specifications for Workmanship and Materials Section 113 – Disposal of Debris.

Payment for inlets, manholes, junction boxes and demolish and remove existing stormwater structures will be made at the appropriate Contract Item Unit Price per Each (EA).

<u>Item No.</u>	<u>Description</u>	<u>Unit</u>
425.AA	DEMOLISH AND REMOVE EXISTING STORM PIPES	EA
425.1	TYPE J JUNCTION BOX 4X4	EA
425.2	TYPE J JUNCTION BOX 4X5	EA
425.3	TYPE J JUNCTION BOX 4X7	EA
425.4	TYPE J JUNCTION BOX 5X5	EA
425.11	STORMWATER MANHOLE RISER, P-7, <10' DEEP (3.5") (FDOT)	EA
425.12	TYPE P ROUND JUNCTION STRUCTURE 5' DIA	EA
425.13	INLET, COT CURB TYPE 1, <10'	EA
425.14	INLET, COT CURB TYPE 2, <10'	EA
425.16	INLET, COT CURB TYPE 3, <10'	EA

C4.3 – PIPE CULVERTS AND STORM SEWERS

Under the respective Contract Items for pipe culverts and storm sewers, the Contractor shall furnish all materials and equipment, construct, test, and maintain complete all pipe culverts and storm sewers as shown on the Plans, specified, and directed by the Engineer.

All pipe culverts and storm sewers, including fittings, shall be manufactured and installed in accordance with the City of Tampa Standard Specifications – Workmanship and Materials Section 430 – Pipe Culverts and Section 108- Dewatering.

The work includes all removal of sidewalks, driveways, curbs, curb and gutter, existing storm sewer systems, and permanent pavement restoration up to the first lift of asphalt (see trench detail, City of Tampa); video inspection, excavation, short tunnels, backfill, sheeting, shoring, bracing, dewatering, pipe bedding, pipe fittings, pipe work, making all pipe connections, flared and mitered end sections, standard pipe cradles and encasements shown on the Plans, anchors, sealants, jackets and coupling bands, installation and removal of

plugs and bulkheads, testing, special temporary and nonpermanent pavement replacement, protection, repair and replacement of utilities and house services, maintenance of traffic including maintaining access across driveways along the line of the work, protection, trimming and replacement of trees and shrubs, protection, repair and replacement of existing culverts and other storm sewerage facilities and all utilities, reconstruction or regrading of road shoulders and ditches, disposal of surplus excavated material, protection of existing structures, making joints in protective plastic lining between pipes and between pipes and manholes or structures and all other work incidental to the installation of all pipe culverts and storm sewers complete in place.

The work does not include rock excavation, manholes, junction chamber, surface restoration comprising lawn or permanent pavement replacement over the first lift of asphalt, additional earth excavation or additional selected fill material, short tunnels and driveway, sidewalk and curb and curb gutter replacement. When shown on the Plans or ordered, such work will be paid for under other appropriate Contract Items.

The quantity of storm sewer pipe, in linear feet, to be measured for payment shall be the actual length of new pipelines placed in the work, as shown, specified and directed. Pipelines will be measured along the centerline of the pipe.

Deductions in the measured length of storm sewers will be made for the width of all structures, including manholes and inlets, measured from the inside wall to the inside wall of the structure.

Payment for pipe culverts and storm sewers will be made at the appropriate Contract Item Unit Price per linear foot (LF) of pipe installed.

Payment for connection of pipe to existing stormwater structures will be made at the appropriate Contract Item Unit Price per Each (EA).

<u>Item No.</u>	<u>Description</u>	<u>Unit</u>
430.1	15" ROUND STORMWATER PIPE (RCP)	LF
430.1A	15" ROUND STORMWATER PIPE (CLASS IV) (RCP)	LF
430.2	18" ROUND STORMWATER PIPE (RCP)	LF
430.2A	18" ROUND STORMWATER PIPE (CLASS IV) (RCP)	LF
430.3	24" ROUND STORMWATER PIPE (RCP)	LF
430.3A	24" ROUND STORMWATER PIPE (CLASS IV) (RCP)	LF
430.4	36" ROUND STORMWATER PIPE (RCP)	LF
430.5	42" ROUND STORMWATER PIPE (RCP)	LF
430.6	54" ROUND STORMWATER PIPE (RCP)	LF
430.7	12"X18" ELLIPTICAL STORMWATER PIPE, (ERCP) CLASS IV	LF
430.8	14"X23" ELLIPTICAL STORMWATER PIPE, (ERCP) CLASS IV	LF
430.9	Connect Stormwater Pipe to Existing Stormwater Structure (30-60")	EA

C5.20 – PERMANENT CURB REPLACEMENT

The Contractor shall furnish all labor, equipment, and materials to construct and maintain all permanent concrete, bituminous, and granite curb or curb, and drop curb, removed or damaged by pipeline construction and appurtenant work as shown on the Plans, specified, and directed by the Engineer.

All concrete work under this series shall conform to the latest FDOT Standard Specifications – Workmanship and Materials Section 346 - Portland Cement Concrete (except 346.6.1).

The work includes all excavation, filling, shaping, grading, base material, compaction of stabilization subbase, and lawn replacement incidental to curb, or curb replacement, drop curb, and other appurtenant work complete in place.

The length of permanent curb and gutter replacement to be measured for payment will be the actual length of gutter placed in the work within payment limits for surface restoration shown on the Plans, or ordered by the Engineer.

Payment limits for permanent curb replacement along pipelines shall include removal and replacement of gutter incidental to construction of manholes and structures. All curb removed or damaged and requiring replacement outside payment limits will not be measured for payment and shall be replaced by the Contractor at his own expense.

Payment of permanent curb replacement will be made at the Contract Item Unit Price per Linear Foot (LF) of curb placed.

<u>Item No.</u>	<u>Description</u>	<u>Unit</u>
520.1	CONCRETE CURB & GUTTER, DROP CURB	LF
520.2	CONCRETE CURB & GUTTER, TYPE F	LF

C5.22 - PERMANENT SIDEWALK/DRIVE REPLACEMENT/CONCRETE STRUCTURE REMOVAL

The Contractor shall furnish all labor, equipment, and materials to replace and maintain all permanent sidewalks, driveways removed or damaged by pipeline construction, and appurtenant work as shown on the Plans, specified, and directed by the Engineer.

Permanent sidewalk/driveway replacement shall conform to the requirements of the City of Tampa Standard Specification for Workmanship and Materials Section 16 - Restoration of Street Pavements.

Reconstruction of concrete flumes and headwall concrete work under this series shall conform to the latest version of the FDOT Standard Specification – Workmanship and Materials Section 346 – Portland Cement Concrete.

The work includes all excavation, filling, shaping, grading, temporary limestone surface, base material, paved surface, architectural pavers, lawn replacement incidental to sidewalk/driveway, and other appurtenant work complete and in place.

The quantity of permanent sidewalk/driveway replacement to be measured for payment will be the actual area of permanent sidewalk/driveway surface placed in the work within payment limits and ordered by the Engineer.

Payment limits for permanent sidewalk/driveway replacement along pipelines shall include removal and replacement of sidewalk/driveway surface incidental to construction of manholes and structures. All sidewalk/driveway surface removed or damaged outside payment limits will not be measured for payment and shall be replaced by the Contractor at his own expense.

Where the existing sidewalk/driveway surface is a nonpermanent type consisting of shell, gravel, limerock, crushed stone, or other similar material, no payment will be allowed for replacement of permanent sidewalk/driveway surface. Replacement of surface for such nonpermanent sidewalk/driveway surfaces will be included in the various classified unit price Contract Items for pipelines or considered under the provisions for "Extra Work."

Payment for permanent sidewalk/driveway replacement, reconstruction of headwall or flume will be made at the Contract Item Unit Price per Square Yard (SY) of sidewalk/driveway removed/replaced.

<u>Item No.</u>	<u>Description</u>	<u>Unit</u>
522.1	SIDEWALK CONCRETE, 4" THICK (SIDEWALKS)	SY
522.1A	PERVIOUS SIDEWALK CONCRETE, 4" THICK	SY
522.2	SIDEWALK CONCRETE, 6" THICK (DRIVEWAYS)	SY

C5.27 –ADA COMPLIANT RAMPS

The Contractor shall furnish all labor, equipment and materials to construct the ADA compliant ramps and appurtenant work as shown on the Contract Plans, specified, and directed by the Engineer.

The work includes all detectable warning surfaces and all concrete work and appurtenant work complete in place. All ADA pedestrian ramps will comply with FDOT Index 304, latest Design and Workmanship and Materials section 527 – Detectable Warnings on Walking Surfaces.

The quantity of ADA compliant ramps measured for payment will be the number of each as shown on the Contract Plans, or as specified and directed by the Engineer.

Payment for ADA compliant ramps will be made at the Contract Item Unit Price for Each (EA) of the pedestrian ramps placed.

<u>Item No.</u>	<u>Description</u>	<u>Unit</u>
527	ADA COMPLIANT RAMPS	EA

C5.28 SERIES - BRICK PAVEMENT REPLACEMENT (DRIVEWAY)

The Contractor shall furnish all labor, equipment and materials to replace and maintain all brick in driveways removed or damaged by pipeline construction and appurtenant work as shown on the Plans, specified, and directed by the Engineer.

Brick pavement surface replacement shall conform to the requirements of the City of Tampa Workmanship and Materials section 528 - Brick Pavement Replacement or Relay.

The work includes all excavation, filling, shaping, grading, base material, sand cushion; cleaning, storing, securing, and installation of brick; grout, lawn replacement incidental to driveway replacement, curbing, and all other appurtenant work complete in place.

The quantity of Brick Pavement Replacement to be measured for payment will be the actual area of brick pavement placed in the work within payment limits for brick pavement restoration shown on the Plans.

Payment limits for Brick Pavement Replacement along pipelines shall include removal and replacement of driveway surface incidental to construction of manholes and structures. All driveway surface removed or damaged and requiring replacement outside payment limits will not be measured for payment and shall be replaced by the Contractor at his own expense.

Where existing driveway surface is a nonpermanent type consisting of shell, gravel, limerock, crushed stone, or other similar materials, no payment will be allowed for replacement of driveway surface. Replacement of surface for such nonpermanent driveway surfaces will be included in the various classified unit price Contract Items for pipelines, and no separate payment shall be made therefor.

Payment for Brick Pavement Replacement (Driveway) will be made at the Contract Item Unit Price per square foot (SF).

<u>Item</u>	<u>Description</u>	<u>Unit</u>
528	BRICK DRIVEWAY REPLACE/RESET	SF

C7.11 – THERMOPLASTIC STRIPING AND MARKING

The Contractor shall furnish all labor, equipment, and materials to install thermoplastic, standard, white, yellow, solid, 6”-12” traffic stripes and markings as shown on the Plans and as directed by the Engineer.

The work includes all necessary labor, equipment, and materials required to apply new thermoplastic traffic stripes and markings, or refurbish existing thermoplastic traffic stripes and markings, as shown in the plans and in accordance with the details and Contract Documents and the latest version of the FDOT Standard Specifications – Workmanship and Materials – Section 711 – Thermoplastic Traffic Stripes and Markings.

Payment for Thermoplastic Markings shall be made at the appropriate Contract Item Unit Price per Linear Feet (LF) of Thermoplastic Markings installed.

<u>Item</u>	<u>Description</u>	<u>Unit</u>
711.1	THERMOPLASTIC, STANDARD, WHITE, SOLID, 6"	LF
711.2	THERMOPLASTIC, STANDARD, WHITE, SOLID, 12"	LF
711.3	THERMOPLASTIC, STANDARD, WHITE, SOLID, 24"	LF
711.4	THERMOPLASTIC, STANDARD, WHITE, SKIP 6"	LF
711.5	THERMOPLASTIC, STANDARD, WHITE, MESSAGE	EA
711.6	THERMOPLASTIC, STANDARD, WHITE, ARROW	EA
711.7	THERMOPLASTIC, STANDARD, YELLOW, SOLID, 6"	LF
711.8	THERMOPLASTIC, STANDARD, YELLOW, SKIP 6"	LF

C89.00 – SOD REPLACEMENT

The Contractor shall furnish all labor, materials, equipment and services to replace and maintain all lawn areas removed or damaged by pipeline and appurtenant work as shown on the Plans, specified, and directed by the Engineer.

Sod replacement by St. Augustine or equal shall conform to the requirements of the City of Tampa Workmanship and Materials Section 2930 – Sodding.

Sod replacement along pipelines, sidewalks, curb and gutters, edge of pavements, house laterals, and around manholes and structures will be included for payment under this Contract Item.

The quantity of lawn area, in square foot, to be measured for payment will be the actual area of Bahia/St. Augustine sodded areas, within the payment limits for surface restoration shown on the Plans. Payment limits for lawn replacement along pipelines shall include removal and replacement of lawn area incidental to construction of manholes and structures. All lawn area removed or damaged and requiring replacement outside payment limits will not be measured for payment; however, the type of replacement shall be determined as specified above, and shall be replaced by the Contractor at his own expense.

Payment for sod replacement will be made at the appropriate Contract Item Unit Price per Square Foot (SF) Unit.

<u>Item No.</u>	<u>Description</u>	<u>Unit</u>
8901	SOD – ST. AUGUSTINE OR BAHIA	SF

WATER CONTRACT PAY ITEMS

GENERAL

The Contractor shall receive and accept the compensation provided in the Proposal and the Agreement as full payment for furnishing all materials and all labor, tools and equipment, for performing all operations necessary to complete the work under the Agreement, and also in full payment for all loss or damages arising from the nature of the work, or from any discrepancy between the actual quantities of work and quantities herein estimated by the Engineer, or from the action of the elements or from any unforeseen difficulties which may be encountered during the prosecution of the work until the final acceptance by the Department.

It is the intent of these contract documents that any cost for which compensation is not directly provided by a bid item shall be prorated and included in the bid item for which they are required. Failure of the Contractor to follow this procedure shall be basis for rejection of his bid.

The prices stated in the Bid Proposal include all costs and expenses for taxes, labor, equipment, commissions, transportation charges and expenses, patent fees and royalties, labor for handling material during inspection together with any and all other costs and expenses for performing and completing the work as shown on the plans and specified herein. The basis of payment for any item at the unit price shown in the Proposal shall be in accordance with the description of that item in this Section.

No separate payment will be made for the following items; the cost of such work shall be included in the applicable contract pay items of work, including separate mobilization/demobilization charges for compliance with any agency:

1. Clearing and grubbing;
2. Excavation, including necessary pavement/slab removal;
3. Shoring and sheeting as required by OSHA trench excavation safety standards unless specifically provided for in a pay item;
4. Dewatering and proper disposal of all water unless specifically provided for in a pay item;
5. Backfill and proper compaction, including suitable fill;
6. Grading;
7. Replacement or restoration of paved or unpaved roadways, grass and shrubbery plots outside of established pay limits above the first lift of asphalt;
8. Temporary facilities and controls during construction such as water/sanitary facilities, traffic control, informational signs and environmental protection, unless specifically provided for in a pay item;
9. Providing and maintaining silt barriers for drainage structures and silt fences for the duration of the project;
10. Removing and legally disposing of waste material due to construction, including but not limited to valve boxes that need to be removed from abandoned water mains;
11. Cleanup and restoring the job site to its original condition, which includes but is not

- necessarily limited to restoring the ground surface to its original grade;
12. Testing and placing system in operation, including re-mobilization for FDEP testing;
 13. Any material and equipment required to be installed and used for the tests;
 14. Maintaining the existing quality of service during construction, including flushing mains that are cleared but not put into service after the bacteriological (bac-T) tests are complete;
 15. Repair of water services damaged during construction;
 16. Adjusting new or existing water meter boxes to grade which are affected by construction;
 17. Appurtenant work as required for a complete and operable system;
 18. Coordination with all utilities and all Federal, State and Local agencies;
 19. Cutting of existing or new pipe for purposes of abandonment or installation of new pipe, valves or fittings;
 20. Tree trimming as required by the City of Tampa Parks Department or any other agency unless specifically provided for as a contract item;
 21. Verification of pipe elevation as stated in Section 8 of the General Provisions and Section S-23.01 the Specific Provisions;
 22. Repair of private irrigation systems damaged during construction;
 23. Furnishing and installing suitable temporary fences, as directed by the Engineer, to adequately secure areas protected by a permanent fence when that permanent fence must be removed. The temporary fence shall remain in place until the permanent fence is replaced;
 24. Furnishing and installing all HDPE MJ adapters, HDPE flanged adapters, HDPE electrofusion tapping tees, electrofusion corporation saddles or HDPE electrofusion couplings;
 25. Maintaining red-line drawings of changes to construction plans, to be submitted for FDEP clearance;
 26. Furnishing record drawings based on the redline drawings in AutoCAD 2015 or higher and one set of drawings on paper. The City will provide the AutoCAD plans used for the design. **Final Payment will not be made for work orders until as-built drawings are received and accepted by the City.**
 27. Furnishing and installing polyethylene encasement per Standard Detail 2.05 for all buried ductile iron pipe, all fittings and tapping sleeves.

The Contractor's attention is again called to the fact that the quotations for the various items of work are intended to establish a total price for completing the work in its entirety. Should the Contractor feel that the cost for any item of work has not been established by the Proposal or Contract Pay Items, he shall include the cost for that work in some other applicable bid item, so that his proposal for the project does reflect his total price for completing the work in its entirety.

Following final payment by the City, the Contractor shall maintain the surface of the unpaved trenches, shrubbery, fences, sod, and other surfaces disturbed for a period of one (6) months thereafter and shall maintain the repaved areas, curbs, gutters and sidewalks, trees, if replaced by the Contractor, for one (1) year after acceptance. The cost of maintaining the restored areas is considered incidental to the cost of restoring the areas disturbed by the Contractor. These costs shall be prorated and included in the cost for the bid item for which it is required.

The quantities for payment under this Agreement shall be determined by actual measurement of the completed items, in place, ready for service and accepted by the City, in accordance with the applicable method of measurement therefore contained herein. A representative of the Contractor shall witness all field measurements.

All work shall be in accordance with the Technical Specifications and Standard Details herein. All materials shall be in accordance with the Material Specifications herein.

C-2.60 CUTTING & PLUGGING

The Contractor shall provide all labor, equipment, and materials to cut and plug 16-inch and smaller pipe as designed on the plans or as directed by the Engineer. To cut and plug pipe shall include, but may not be limited to:

1. Excavating and maintaining the trench;
2. Performing a minimum of two complete cuts of the pipe to facilitate the plugging;
3. Removing of pipe or appurtenances to allow for the installation of plugs on 8" or less open ends of pipe;
4. Furnishing and installing grout to plug any abandoned open end(s) pipe;
5. Furnishing and installing cap(s) or plug(s) and restraints to adequately withstand a working pressure of 150 psi, on all in-service open end(s) of pipe;
6. Backfilling and compacting the trench;
7. Cleaning up and restoring the job site which shall include re-grading the terrain;
8. Removing and legally disposing of all waste materials.

Payment shall be made for each cut and plug accomplished and accepted by the Engineer.

Payment shall be made under:

<u>Item No.</u>	<u>Description</u>	<u>Unit</u>
2600	CUT AND PLUG 3" AND SMALLER	EA
2601	CUT AND PLUG 4", 6" AND 8" PIPE	EA

C-2.80 INCIDENTALS TAPPED CONNECTIONS

The Contractor shall provide all labor, equipment, and material to connect existing 3-inch and smaller water mains to the newly installed water mains (see standard detail 5.06). The incidental tapped connections shall include, but may not be limited to:

1. All necessary excavations;

2. Maintaining the excavation which shall include dewatering, bracing and sheeting where required or as directed by the Engineer;
3. Making a minimum of two cuts into the existing pipe to facilitate the connection to the existing pipe;
4. Making all necessary taps (2 may be required) that are required to affect the tie-in connection.
5. Furnishing and installing all necessary material, including reducers and increasers approved by the Water Department, which is required to construct the tie-in connections;
6. Furnishing and installing a 2-inch gate valve and box close the large main;
7. Furnishing and installing 2-inch-high density polyethylene (HDPE) tubing;
8. Furnishing and installing cap(s) or plug(s) and restraints adequate to withstand a working pressure of 150 psi, on all in-service open end(s) of pipe;
9. Backfilling and compacting the trench;
10. Cleaning up and restoring the job site which shall include re-grading the terrain;
11. Removing and legally disposing of all waste materials.

Payment shall be made for each 3-inch and smaller tapped connection furnished and installed into the piping system complete and working to the satisfaction of the Engineer. Payment for 2-inch gate valve and box will be made under the appropriate pay item number.

Payment shall be made under:

<u>Item No.</u>	<u>Description</u>	<u>Unit</u>
2800	FURNISH AND INSTALL 3" AND SMALLER TAPPED CONNECTION	EA

C-7.00 TAPS

The Contractor shall provide all labor and equipment for installing tapping sleeves and making the appropriate full port tap complete and operable. The tapping sleeve installation shall include:

1. Excavating the trench;
2. Maintaining the trench that shall include dewatering and bracing and sheeting where required or as directed by the Engineer;
3. Furnishing and installing the tapping sleeve;
4. Pressure testing the tapping sleeve and valve;
5. Making the full port tap, up to and including 42";
6. Furnishing and installing mechanical joint tapping sleeves for size-on-size pipe taps or as directed by the engineer;

7. Furnishing, installing and sealing the tapping sleeve with blue polyethylene encasement of not less than 8 mils thick;
8. Backfilling and compacting the trench;
9. Cleaning up and restoring the job site which shall include re-grading the terrain;
10. Removing and legally disposing of all waste materials.

Payment shall be based on the number and size of tapping sleeves installed and incorporated into the piping system complete, working and operating to the satisfaction of the Engineer. Valves and valve boxes shall be paid for by the appropriate pay item.

Payment shall be made under:

<u>Item No.</u>	<u>Description</u>	<u>Unit</u>
7002	FURNISH AND INSTALL 8" TAPPING SLEEVE AND TAP	EA

C-9.40 GROUTING ABANDONED PIPE

The Contractor shall provide all labor and material necessary to grout abandoned pipes in place including but not limited to taps, caps, plugs, pipes, valves, and fittings necessary to complete the work in a manner acceptable to the Engineer. Under this section, payment shall be made for:

1. Excavating the trench;
2. Maintain the trench
3. Furnishing and installing the appropriate fittings necessary to inject and blow-off the grout in a manner acceptable to the Engineer;
4. Completely filling the designated pipe with an approved grout material;
5. Removing injection and blow-off pipes and fitting and plugging tapped plugs and caps;
6. Removing excess concrete from the trench;
7. Backfilling and compacting the trench;
8. Cleaning up and restoring the job site which shall include re-grading the terrain;
9. Removing and legally disposing of all waste materials.

Restoration shall be paid separately under the appropriate pay item.

Payment shall be made under:

<u>Item No.</u>	<u>Description</u>	<u>Unit</u>
9400	GROUT 8"-12" DIAMETER PIPE	LF

C21.0 DUCTILE IRON AND PVC PIPE, FITTINGS, TAP

The Contractor shall provide all labor, equipment, and materials to furnish and install the full-port tap, ductile iron pipe or PVC pipe, plugs, caps, bends, sleeves, reducers, tees, crosses, and offsets.

Furnishing and installation a full-port tap. The tapping sleeve installation shall include:

1. Excavating the trench;
2. Maintaining the trench that shall include dewatering and bracing and sheeting where required or as directed by the Engineer;
3. Furnishing and installing the tapping sleeve;
4. Pressure testing the tapping sleeve and valve;
5. Making the full port tap, up to and including 42";
6. Furnishing and installing mechanical joint tapping sleeves for size-on-size pipe taps or as directed by the engineer;
7. Furnishing, installing and sealing the tapping sleeve with blue polyethylene encasement of not less than 8 mils thick;

Furnishing and/or installing ductile iron or PVC pipe, plugs, caps, bends, sleeves, reducers, tees, crosses, and offsets shall include, but may not be limited to:

1. Furnishing all construction layouts
2. Field locating all utilities to confirm horizontal and vertical location in areas of possible conflict;
3. Furnishing all labor equipment and materials to excavate the trench;
4. Maintaining the trench which shall include dewatering and sheeting and bracing as required by OSHA or as directed by the Engineer standards unless specifically provided for in a pay item;
5. Cleaning dirt and foreign material from within pipe and bell;
6. Beveling field-cut joints and pipe shorts;
7. Furnishing and installing EPDM gaskets for all DIP and PVCP;
8. Furnishing and installing Department approved pipe and any pipe shorts as part of the pipeline;
9. Furnishing and installing Department approved pipe in casing pipe when shown on the plans;
10. Installing push-on joint restraint gaskets for DIP as shown on the plans or as directed by the Engineer (furnishing push-on restraint gaskets will be compensated under appropriate pay items);
11. Furnishing and installing blue for polyethylene encasement per standard detail 2.05 (City of Tampa Water Dept. website);
12. Furnishing and installing 2, 4, 6, 8, 12, and 16-inch nominal diameter PVC pipe or 4, 6, 8, 12, 16, 20, 24, 30, 36, 42, or 48-inch nominal diameter ductile iron pipe at various depths;
13. Furnishing and installing 2-inch PVC fittings, when necessary, at various depths;
14. Furnishing and installing on all PVC pipe and fittings, a continuous double run of 14-gauge wire attached to the top of the pipe with duct tape. The wire shall be looped around each bell. There shall be no dead ends and the locator wire shall be brought into a separate curb stop box at every valve box;
15. Cleaning up and removing excess water main pipe and appurtenances;
16. Pressure testing the water main and stormwater forcemain pipe;
17. Furnishing and installing temporary pipe short's valves and bends for full port flushing;
18. Furnishing and installing valve location protection devices per Standard Detail 3.05 whenever needed to keep valve locations visible;
19. Disinfecting the water main pipe and bacteriological testing;
20. Furnish and apply paint for any above ground or aerial crossing pipe and appurtenances. Paint to be high-grade enamel, OSHA blue for potable water or purple for reclaim water as directed by the Engineer;

21. Backfilling and compacting the trench;
22. Cleaning up and restoring the job site which shall include re-grading the terrain; and
23. Removing and legally disposing all waste materials.

Cover over pipe shall be defined as the vertical distance from the top of the pipe to the surface grade above the main. Trench depth shall be defined as the vertical distance from the bottom of the barrel of the pipe to the surface grade above the main. The cost to restore pavement to the first lift of asphalt will be included in the cost of the pipe.

Payment for connecting new water mains to existing water mains will be made utilizing the contract unit price for installing the fittings, polywrap, or valves used in the connection.

The cost to hydrostatically test and disinfect the ductile iron or PVC water mains shall be prorated and included in the pipeline construction unit prices. The prorated cost should include, but may not be limited to furnishing and installing all:

- 1) Material;
- 2) Labor;
- 3) Necessary pumps;
- 4) Recorder charts;
- 5) Gages (300PSIG limit, oil filled);
- 6) Chemicals;
- 7) Temporary valves;
- 8) Temporary plugs;
- 9) Sample taps, (including installation of brass dry main plugs after tap removal);
- 10) Blow off assemblies (including removal after disinfection is complete);
- 11) Dry main plugs;

necessary to pressure test and disinfect various sizes and depths of ductile iron pipe or PVC pipe. Furthermore, no extra compensation shall be paid to the Contractor for:

1. Furnishing and installing brass, dry main plugs at the locations of all removed sample taps, or
2. Removing existing "end of line" or blow-off valves after the pipeline has been disinfected and prior to connecting the newly installed pipeline to the existing water main.

All temporary materials or materials not remaining in the ground after the completion of the disinfection and pressure testing shall remain the property of the Contractor.

The ductile iron pipe, fittings, bends shall conform to the City of Tampa– Workmanship and Materials Section 30 – Miscellaneous Pipe & Fittings.

Payment for shall be made under:

<u>Item No.</u>	<u>Description</u>	<u>Unit</u>
2106	F&I 6" DUCTILE IRON PIPE	LF
2108	F&I 8" DUCTILE IRON PIPE	LF

C22.00 FURNISH AND INSTALL HDPE PIPE BY HORIZONTAL DIRECTIONAL DRILLING

The Contractor shall provide all labor, equipment, and materials to furnish and install the HDPE pipe using horizontal directional drilling (HDD) as a work method. The furnishing and installation of the HDPE pipe shall include, but may not be limited to:

1. Furnish and install construction layout by a registered professional land surveyor;
2. Field locating all utilities, except existing water lines not shown properly on the plans, to confirm horizontal and vertical location in areas of possible conflict;
3. Excavating the access pits;
4. Maintaining the pits which shall include dewatering and sheeting and bracing as required by OSHA or as directed by the Engineer;
5. Joining pipe sections by butt fusion or by furnishing and installing an appropriately sized HDPE electrofusion coupling;
6. Pigging, cleaning or flushing the line to remove dirt, debris if directed by the engineer;
7. Furnishing and installing temporary valve, pipe shorts and bends to accomplish full port flushing of mains;
8. Furnishing and installing Department approved pipe and any pipe shorts as part of the pipeline;
9. Furnishing and installing 4, 6, 8, 10, 12, and 14-inch nominal diameter HDPE pipe and 2-inch HDPE tubing at various depths by horizontal directional drilling;
10. Furnishing and installing on all HDPE pipe and tubing, two continuous 10-gauge wires along the top of the pipe. There shall be no dead ends and each locator wire shall be routed into a curb stop box at every valve box. Connections between wire ends shall be made using an approved connection as shown in the standard details;
11. Furnishing and installing 10-gauge tracer wire on Ductile Iron Water Mains 16" and greater;
12. Removing excess water main pipe and appurtenances;
13. Pressure testing the water main pipe;
14. Disinfecting the water main pipe;
15. Furnishing and installing push-on and mechanical joint restrainers on existing pipe as shown on the plans or as directed by the Engineer;
16. Backfilling and compacting the trenches or pits including re-grading the terrain;
17. Cleaning up and restoring the job site which shall include re-grading the terrain; and
18. Removing and legally disposing of all waste materials.

Cover over pipe shall be defined as the vertical distance from the top of the pipe to the surface grade above the main. Trench depth shall be defined as the vertical distance from the bottom of the barrel of the pipe to the surface grade above the main.

Payment for connecting new water mains to existing water mains will be made utilizing the contract unit price for installing the tapping sleeves, restraints, fittings or valves used in the connection.

The cost to hydrostatically test and disinfect the HDPE water mains shall be prorated and included in the HDPE pipeline construction unit prices. The prorated cost should include, but may not be limited to furnishing and installing all:

- 1) Material
- 2) Labor
- 3) Necessary pumps
- 4) Recorder charts
- 5) Gages (200 PSIG limit, oil filled)
- 6) Chemicals
- 7) Temporary valves

- 8) Temporary plugs
- 9) Sample Taps, (including furnishing and installation of brass dry main plugs in HDPE electrofusion corporation saddles after sample tap removal)
- 10) Blow off assemblies (including removal after disinfection is complete)
- 11) Dry main plugs installed in HDPE electrofusion corporation saddles.

necessary to pressure test and disinfect various sizes and depths of HDPE pipe. Furthermore, no extra compensation shall be paid to the Contractor for:

1. Furnishing and installing brass, dry main plugs in HDPE electrofusion corporation saddles at the locations of all removed sample taps, or
2. Removing existing "end of line" or blow off valves after the pipeline has been disinfected and prior to connecting the newly installed pipeline to the existing water main.

All temporary materials or materials not remaining in the ground after the completion of the disinfection and pressure testing shall remain the property of the Contractor.

The pipe quantities to be paid for under this section shall be based on the size and the horizontal distance in linear feet of HDPE pipe measured along the top centerline of the pipe in place complete and acceptable to the Engineer.

Payment shall be made under:

<u>Item No.</u>	<u>Description</u>	<u>Unit</u>
2200	F&I - 2" HDPE TUBING W/HDPE TRANSITION ADAPTERS AT VARIOUS DEPTHS OFFSET	EA

C25.0 REMOVAL AND ABANDONMENT OF PIPE

The Contractor shall provide all labor, equipment and materials to remove the abandoned pipeline and appurtenances (such as valves, fittings, and other materials) as designated on the plans or directed by the Engineer.

The removal of the abandoned pipe shall include, but may not be limited to:

1. Furnishing all equipment, labor, tools and equipment to excavate the trench;
2. Maintaining the trench;
3. Removing the abandoned pipeline and appurtenances;
4. Furnishing and installing grout to plug any abandoned open-end pipe;
5. Furnishing and installing a cap or plug and restrain adequately to withstand a working pressure of 150 psi, on all in-service open end pipe;
6. Transporting the removed pipe and appurtenances, without delay, to a location designated by the Engineer;
7. Unloading the removed pipeline and appurtenances at the designated location;
8. Cutting of any existing pipe to accommodate abandonment;
9. Backfilling and compacting the trench;
10. Cleaning up and restoring the job site which shall include re-grading the terrain; and
11. Removing and legally disposing of all waste materials.

Payment shall be made based on the size and horizontal distance in linear feet of pipeline removed measured along the

top centerline. At the Department's option, all abandoned pipe and appurtenances shall remain the property of the Department. If the Department opts not to remain owner of the removed facilities, then the Contractor shall remove and properly dispose of the facilities at his expense.

Payment shall be made under:

<u>Item No.</u>	<u>Description</u>	<u>Unit</u>
2500	REMOVE 3" AND SMALLER DIAMETER ABANDONED PIPE	LF
2501	REMOVE 4"-12" DIAMETER ABANDONED PIPE	LF

C40.0 FITTINGS

The Contractor shall provide all labor and equipment to completely install plugs, caps, bends, sleeves, reducers, tees, crosses, and offsets. The installation of ductile iron fittings shall include, but not be limited to:

1. Excavating the trench;
2. Maintaining the trench which shall include dewatering and bracing and sheeting where required or
3. as directed by the Engineer;
4. Furnishing and installing the appropriate fitting;
5. For HDPE pipe, furnishing and installing the appropriate HDPE mechanical joint adapters and back-up rings or mechanical joint glands;
6. Backfilling and compacting the trench;
7. Cleaning up and restoring the job site which shall include re-grading the terrain; and
8. Removing and legally disposing of all waste materials.

Additional compensation shall not be made for restraining devices used in conjunction with hydrant installations. Payment will be made for the number of each size and type of fittings installed and incorporated into the piping system complete, working, and operating to the satisfaction of the Engineer.

Payment shall be made under:

<u>Item No.</u>	<u>Description</u>	<u>Unit</u>
4004	F&I 6" DUCTILE IRON PLUG OR CAP W/ DIP, CIP OR PVC	EA
4005	F&I 6" DUCTILE IRON BENDS, OFFSET, SLEEVES OR REDUCERS W/ DIP, CIP OR PVC	EA
4006	F&I 6" DUCTILE IRON TEE W/ DIP, CIP OR PVC	EA
4009	F&I 8" DUCTILE IRON BENDS, OFFSETS, SLEEVES OR REDUCERS W/ DIP, CIP OR PVC	EA

C50.0 FIRE HYDRANTS

The Contractor shall provide all labor, equipment and specified materials to completely furnish and/or install full and complete fire hydrant assemblies on new and existing water mains as shown on the construction plans or as directed by the Engineer.

The "hydrant assembly" to be furnished is 10 LF or less of 6" DIP, hydrant elbow, and hydrant barrel extension and hydrant barrel as shown in Standard Detail 4.01.

Hydrant assembly installation shall include, but may not be limited to:

1. Excavation of hydrant assembly trench;
2. Maintaining the trench that shall include dewatering, bracing and sheeting where required or as directed by the Engineer;
3. Anchoring the hydrant to existing or new main;
4. Furnishing and installing of up to and including ten (10) feet of 6-inch ductile iron pipe;
5. Removing any plugs, caps, restraining devices, etc. from existing water mains;
6. Furnishing and installing all mechanical thrust restraint beginning at the hydrant valve as required
7. In the Technical Specifications or as directed by the Engineer;
8. Furnish and installing polyethylene encasement for all underground pipe and fittings;
9. Furnish and install hydrant in the plumb position with 7' clearance in the front and 4-1/2' clearance from the sides and back from walls, poles and obstructions;
10. Furnishing and installing of a concrete "support block" under each hydrant;
11. Furnishing and installing of a concrete support cradle under each hydrant tee on PVC mains;
12. Backfilling and compacting hydrant assembly trench;
13. Furnish high grade enamel OSHA yellow paint and paint hydrant barrel as required in the Technical Specifications;
14. Furnish high grade enamel OSHA green paint and paint the hydrant bonnet;
15. Furnish and install one blue, reflective pavement marker (RPM) in the street adjacent to the hydrant at a location to be determined by the Engineer. The RPM shall meet or exceed all provisions of the Florida Department of Transportation, Standard Specifications for Road and Bridge Construction, Section 706;
16. Furnishing and installing concrete thrust collars around the barrel of the hydrant;
17. Pressure test the hydrant assembly in conformance with these documents.
18. Cleaning up and restoring the job site which shall include re-grading the terrain; and
19. Removing and legally disposing of all waste materials.

The Contractor shall do all things necessary to completely install a fire hydrant assembly in accordance with the Technical Specifications, Standard Details or as directed by the Engineer. Payment will be based on the number of hydrant assemblies incorporated into the pipeline system complete and working to the satisfaction of the Engineer. Payment for tees, valves, taps, fittings, and restoration will be made utilizing the appropriate contract bid item. Separate payment will be made for any 6-inch ductile iron pipe in excess of 10 feet connecting the hydrant gate valve to the hydrant.

In addition, it will be the Contractor's responsibility to determine the correct size (bury depth) of each hydrant installed so that the requirements of the Technical Specifications are satisfied. Any hydrant not installed to the proper grade shall be replaced with one of the correct size by the Contractor at his expense prior to final approval and acceptance.

Fittings required because of contractor convenience, (i.e. installed because the contractor elected to install a shallow bury hydrant) shall be furnished and installed at the contractor's expense.

Payment shall be made under:

<u>Item No.</u>	<u>Description</u>	<u>Unit</u>
5000	F&I FULL FIRE HYDRANT ASSEMBLY	EA

C52.0 FIRE HYDRANTS (REMOVAL OR RELOCATION OF EXISTING)

The Contractor shall provide all labor, equipment, and material for removal/salvage or relocation of each existing fire hydrant assembly on an existing water pipeline. Hydrant removal/salvage or relocation includes, but may not be limited to:

1. Excavating the hydrant pit;
2. Furnish and install restraining devices anchoring the hydrant shut off valve to the pipeline tee;
3. Remove hydrant from hydrant lead;
4. Remove hydrant protection post(s);
5. Excavate for and relocate the hydrant as directed on the Plans;
6. Backfilling and compacting the hydrant pit(s);
7. Cleaning up and restoring the job site which shall include re-grading the terrain;
8. Removing and legally disposing of all waste materials;
9. Transporting the removed hydrant without delay to the location designated by the Engineer; and
10. Unload the removed hydrant at the designated location.

No additional compensation shall be made for fittings installed to secure and plug the hydrant shut off valve. Contractor shall be paid for each hydrant removed, salvaged, & returned, or relocated. All hydrants removed shall remain the property of the City unless otherwise directed by the Engineer. If the City opts not to remain the owner, the Contractor shall remove and properly dispose of the hydrant at his expense.

Payment shall be made under:

<u>Item No.</u>	<u>Description</u>	<u>Unit</u>
5200	REMOVE AND SALVAGE OF FIRE HYDRANT	EA

C60.00 VALVES

The Contractor shall provide all labor, equipment and materials to completely furnish and install 6-inch through 8-inch gate valves, including all accessories and incidentals. The valve installation shall include, but may not be limited to:

1. Excavating the trench;
2. Maintaining the trench that shall include dewatering and bracing and sheeting where required or as directed by the Engineer;
3. Furnish and install a gate valve in a mainline of DIP, CIP or PVC with a valve box or a tapping valve on a tapping sleeve with a valve box;
4. Furnish and install a gate valve on HDPE along with all associated HDPE mechanical joint adapters and appurtenances;
5. Furnish and install an air release valve in a mainline of DIP, CIP or PVC with a valve box or a tapping valve on a tapping sleeve with a valve box;
6. Backfilling and compacting the trench;
7. Furnishing, forming and pouring a 6-inch thick concrete pad around each valve box installed in non-paved areas;
8. Furnishing paint and painting valve cover;
9. Furnishing and installing or forming and pouring concrete support blocks under valves installed on PVC and HDPE pipeline;
10. Cleaning up and restoring the job site which shall include re-grading the terrain; and

11. Removing and legally disposing of all waste materials.

Payment shall be made for the number of each size valve and valve box installed and incorporated into the piping system complete, working and operating to the satisfaction of the Engineer.

Payment shall be made under:

<u>Item No.</u>	<u>Description</u>	<u>Unit</u>
6000	FURNISH AND INSTALL 2" GATE OR TAPPING VALVE AND BOX ON DIP, CIP OR PVCP	EA
6002	FURNISH AND INSTALL 6" GATE OR TAPPING VALVE AND BOX ON DIP, CIP OR PVCP	EA

C61.0 LINE STOPS

The Contractor shall furnish all labor, equipment, tools and materials to install line stops on existing water mains.

The line stop installation shall include but is not limited to:

1. Excavating the trench;
2. Maintaining the trench that shall include dewatering and bracing and sheeting where required or as directed by the Engineer;
3. Furnishing and installing the line stop;
4. Furnishing and installing polywrap on line stop appurtenances remaining on the pipe after the line stop is removed;
5. Furnishing and installing reverse dead-man restraint with split wedge action restraints as shown in Standard 2.10A.
6. Compacting soil in trench around dead-man and line stop to a minimum 90% modified proctor density;
7. Excavating the trench to remove line stop;
8. Backfilling and compacting the trench;
9. Cleaning up and restoring the job site which shall include re-grading the terrain; and
10. Removing and legally disposing of all waste materials.

Payment shall be made under:

<u>Item No.</u>	<u>Description</u>	<u>Unit</u>
6102	F&I 6" LINE STOP ON EXISTING WATER MAIN	EA
6102	F&I 8" LINE STOP ON EXISTING WATER MAIN	EA
6205	F&I 8" TEAM INSERTION VALVES ON EXISTING WATER MAIN	EA

Payment for reverse dead-man restraints shall be paid for under the appropriate items for split wedge action restraints and poured concrete thrust blocking. Restoration items shall be paid for under the appropriate item as needed.

C81.0 METERED SERVICES TWO-INCH AND LESS WITH PIPE WORK

The Contractor shall provide all labor, materials and equipment for the installation and/or transfer of 3/4" (single or dual service), 1", 1½", and 2" meters and 2" double detector check valves, as specified, and issued in conjunction with a pipeline project.

Meter service lengths are defined as follows:

- 0-15' for service line distances up to and including 15' long.
- +15-80' for service lines greater than 15' up to and including 80'.

All water meters and double detector check valve assemblies will be furnished by the City. Meter service installation shall include, but may not be limited to:

1. Excavating and maintaining the trench;
2. Making the appropriate size tap;
3. When directed by the Engineer or as indicated in the standard details, furnish and install an appropriately sized steel, PVC or HDPE sleeve under paved areas for long-side meter service by open cut, horizontal directional drilling/directional bore or "moling" as directed by the Engineer or as indicated in the standard details;
4. For use on DIP, CIP or PVC, furnish and install the appropriate size and type of corporation stop, high density polyethylene, PVC pipe, any required service fittings, curb stop, meter box, and tail piece extension as designated by the Tampa Water Department's Technical Specifications. For use on HDPE pipe, furnish and install the appropriate size and type of electrofusion tapping tee or electrofusion corporation, HDPE tubing or pipe, any required service fittings, curb stop, meter box and tail piece extension as designated by the Tampa Water Department's Technical Specifications;
5. On all long-side HDPE service lines, furnishing and installing, two continuous 12 gauge wires along the top of the pipe, inside the sleeve. There shall be no dead ends and each locator wire shall be routed from the corporation to the meter box. Connections between wire ends shall be made using an approved connections at each end as shown in the standard details;
6. Installation of the appropriate sized, City furnished, meter or transferring an existing meter to the new service line;
7. Relocating existing meters and adjusting existing meters to grade;
8. Backfilling and compacting of all excavations;
9. Cleaning up and restoring the job site to its original condition which includes but is not limited to restoring the elevation of surface to its original grade;
10. Removing and legally disposing of all waste materials.

Payment shall be made for each meter service furnished and installed, and accepted by the Engineer. Payment shall be made under:

<u>Item No.</u>	<u>Description</u>	<u>Unit</u>
8100	FURNISH TAP AND INSTALL 3/4" OR 1" METER SERVICE ON PVCP, DIP, OR CIP (0-15')	EA
8101	FURNISH, TAP AND INSTALL 3/4" METER SERVICE ON PVCP, DIP OR CIP (+15-80')	EA

WASTE WATER CONTRACT PAY ITEMS

C1.217– GROUTING AND PLUGGING OF EXISTING SANITARY PIPE & MANHOLE

The Contractor shall furnish and install all labor, materials, services, equipment and appurtenances to access pipe at both ends, plug, grout and abandon the existing stormpipes that are located in the project area which may include areas outside the limits of new construction as shown on the Plans, specified, and directed by the Engineer.

The work includes, but is not limited to, the following: grouting and abandonment of existing stormpipe or sanitary pipe and structures in the project area which may include areas outside the limits of the new construction of pipe areas as shown in the Contract Drawings.

Grouting shall conform to the FDOT Workmanship and Materials Section 121 – Flowable Fill.

Payment for the grouting and abandonment of existing storm pipe will be made at the appropriate Contract Unit Price per Cubic Yard (EA) and per Linear Foot (LF).

<u>Item No.</u>	<u>Description</u>	<u>Unit</u>
121.1	GROUT EXISTING MANHOLES	EA
121.2	GROUT EXISTING SANITARY PIPE 8"	LF
121.3	GROUT EXISTING SANITARY PIPE 24"	LF
121.4	GROUT EXISTING SANITARY PIPE 27"	LF

C9.00 - PVC PIPE (GREEN AWWA C900 DR-18 & C905 DR-25)

The Contractor shall furnish all materials and equipment, construct, test, and maintain complete all pipe sewers as shown on the Plans, specified, and directed by the Engineer.

The pipe sewers shall conform to the latest version of the City of Tampa– Workmanship and Materials Section 11 – PVC Pipe Gravity.

The work includes all related work and appurtenances required to locate existing sanitary sewer lines and make the connections as shown on the Plans to the proposed lines, maintaining existing sanitary sewer in operation, removal of existing abandoned or out-of-service pipes encountered during excavation, sidewalks, driveways, curbs, curb and gutter, and permanent pavement up to the first lift of asphalt (per the City of Tampa Trench Details – latest), excavation, saw cutting concrete and asphalt, short tunnels, backfill, sheeting, shoring, bracing, dewatering, pipe bedding, pipe fittings, pipe work, making all pipe connections, locate wire, standard pipe cradles and encasements shown on the Plans, installation and removal of plugs and bulkheads, testing, special temporary and nonpermanent pavement replacement, nonpermanent sidewalk and driveway replacement, protection, repair and replacement of utilities and house services, protection, trimming and replacement of trees and shrubs, protection, repair and replacement of culverts and other storm water facilities, reconstruction or re-grading of road shoulders and ditches, disposal of surplus excavated material, protection of existing structures, removal and replacement of fence, clearing and grubbing, making joints between pipes and manholes or structures and all other work incidental to the installation of the sanitary sewer pipe complete in place.

The work does not include sheeting left in place, rock excavation, manholes, surface restoration comprising lawn or permanent pavement replacement above the first lift of asphalt, additional earth excavation or additional selected fill materials, driveways, sidewalk and curb or curb and gutter replacement and, when shown on the Plans or ordered, such work will be paid for under other appropriate Contract Items.

The quantity of sewer pipe, in linear feet, to be measured for payment shall be the actual length of new pipelines placed in the work, as shown, specified and directed by the Engineer. Depth of cut for sanitary sewers shall be measured from the original ground surface to the pipe invert. Pipelines will be measured along the centerline of the pipe.

The measured length for sanitary force mains will include all fittings and short tunnels with deductions for the laid length of valves.

Payment for sewer pipe will be made at the appropriate Contract Item Unit Price per Linear Foot (LF) of the respective pipe.

<u>Item No.</u>	<u>Description</u>	<u>Unit</u>
900.1	8" DIA. PVC PIPE (C-900, DR-18)	LF
900.2	12" DIA. PVC FM PIPE (DR-9)	LF

C17.06 - SOLID WALL PVC PIPE HOUSE LATERAL AND SANITARY PVC

The Contractor shall furnish all materials and equipment, construct, test and maintain house laterals.

The pipe laterals shall conform to the latest version of the City of Tampa– Workmanship and Materials Section 11 – PVC Pipe Gravity.

The work includes all related work and appurtenances required to locate existing house connections and make the connections to the proposed lines, excavation, short tunnels, backfill, sheeting, shoring, bracing, dewatering, removal of sidewalks, driveways, curbs, curb and gutter and permanent pavement to the first lift of asphalt, pipe bedding, pipe, pipe fittings used to change in line or grade where directed by the Engineer, disposal of surplus excavated material, protection, repair and replacement of utilities, house services, trees and shrubs and other storm sewerage facilities, special temporary pavement, restoration and regrading of road shoulders and ditches and all other work incidental to the installation of pipe house laterals complete in place as shown on the Plans, specified, and directed by the Engineer.

Payment for house lateral will be made at the Contract Item Unit Price per Each (EA) of house lateral and unit price per Linear Foot (EA) for PVC pipe in conflict manhole.

<u>Item No.</u>	<u>Description</u>	<u>Unit</u>
1706	6-INCH DIAMETER PVC PIPE HOUSE LATERAL (SDR-35) (<30')	EA

C25.0 REMOVAL AND ABANDONMENT OF PIPE

The Contractor shall provide all labor, equipment and materials to remove the abandoned pipeline and appurtenances (such as valves, fittings, and other materials) as designated on the plans or directed by the Engineer.

The removal of the abandoned pipe shall include, but may not be limited to:

11. Furnishing all equipment, labor, tools and equipment to excavate the trench;
12. Maintaining the trench;
13. Removing the abandoned pipeline and appurtenances;
14. Furnishing and installing grout to plug any abandoned open-end pipe;
15. Furnishing and installing a cap or plug and restrain adequately to withstand a working pressure of 150 psi, on all in-service open end pipe;
16. Transporting the removed pipe and appurtenances, without delay, to a location designated by the Engineer;
17. Unloading the removed pipeline and appurtenances at the designated location;
18. Cutting of any existing pipe to accommodate abandonment;
19. Backfilling and compacting the trench;
20. Cleaning up and restoring the job site which shall include re-grading the terrain; and
21. Removing and legally disposing of all waste materials.

Payment shall be made based on the size and horizontal distance in linear feet of pipeline removed measured along the top centerline. At the Department's option, all abandoned pipe and appurtenances shall remain the property of the Department. If the Department opts not to remain owner of the removed facilities, then the Contractor shall remove and properly dispose of the facilities at his expense.

Payment shall be made under:

<u>Item No.</u>	<u>Description</u>	<u>Unit</u>
2501	REMOVE 4"-12" DIAMETER ABANDONED PIPE	LF

C35.08 – FLEXIBLE COUPLINGS

The Contractor shall furnish all materials and equipment, construct, test and maintain flexible couplings.

The work includes all excavation, backfill, sheeting, shoring, bracing, dewatering, removal of sidewalks, driveways, curbs, curb and gutter, and permanent pavement, flexible couplings, disposal of surplus excavated material, protection, repair of utilities, house services, trees and shrubs, culverts and other storm sewerage facilities, and all other work incidental to the installation of flexible couplings complete in place as shown on the Plans, specified, and directed by the Engineer.

The number of Flexible Couplings to be measured for payment will be the actual number of respective flexible couplings installed in the work.

Payment for Flexible Couplings will comprise the additional cost of each coupling over the cost of straight sewer pipe of equivalent length and diameter and will be made at the Contract Item Unit Price per flexible coupling.

<u>Item No.</u>	<u>Description</u>	<u>Unit</u>
3508	8-INCH FLEXIBLE CONNECTOR	EA

C43.01 - PRECAST CONCRETE SHALLOW TYPE MANHOLE

The Contractor shall furnish all materials and equipment, test, install and maintain the shallow type manholes complete as shown on the Plans, specified, and directed by the Engineer.

The work includes all testing, excavation, backfilling, limestone screenings, bedding, sheeting, shoring, bracing, dewatering, removal of pavement, sidewalks, curb, curb and gutter, concrete work and reinforcing, making all pipe connections, setting pipe stubs and plugs for future connections, nonpermanent and special temporary pavement replacement, disposal of surplus excavated material and protection of adjacent facilities.

Not included in the work are cast iron manhole frames and covers, sheeting left in place, additional earth excavation, or additional selected fill material which, if ordered or specified, will be included for payment under other Contract Items.

The Precast Concrete Shallow Type Manholes shall conform to the latest version of the City of Tampa–Workmanship and Materials Section 12 – Precast Concrete Manholes.

The number of Precast Concrete Shallow Type Manholes to be measured for payment will be the actual number of manholes installed in the work.

Payment for Precast Concrete Shallow Type Manholes will be made at the appropriate Contract Item Unit Price per manhole.

<u>Item No.</u>	<u>Description</u>	<u>Unit</u>
4301	PRECAST CONCRETE SHALLOW TYPE MANHOLE	EA

C48.00 REHABILITATE MANHOLE AND STRUCTURE BY COATING SYSTEM

The Contractor shall furnish all labor, materials and equipment to rehabilitate the existing manhole, complete as shown on the Plans, specified, and directed by the Engineer.

The manhole rehabilitation shall conform to the Workmanship and Materials section headed “Manhole and Structure Rehabilitation,” Specific Provisions and to the requirements shown on the drawings. The work comprises installing an approved coating system as specified including surface preparation, cleaning, application of hydraulic cement or other means to fill voids and stop infiltration, curing, visually inspecting finished coating, testing, and all appurtenant work. The work shall also include permanent pavement and sod restoration (where applicable) and all appurtenant work.

The Contractor shall furnish all labor, materials and equipment to transport all debris removed including but not limited to manhole frame and cover from the existing manholes to an approved disposal site.

Payment for the manhole rehabilitation and associated disposal of debris will be made at the appropriate Contract Item Unit Price per vertical foot of manhole rehabilitated.

Payment for the manhole rehabilitation with Concrete epoxy paste and associated disposal of debris will be made at the appropriate Contract Item Unit Price per square foot of manhole rehabilitated.

Payment for Removal of the Existing T-Lok and associated disposal of debris will be made at the Contract Unit Price per square foot.

<u>Item No.</u>	<u>Description</u>	<u>Unit</u>
4800.1	MANHOLE REHABILITATION – T-LOCK REPAIRS	SF

C49.00 – MODIFICATIONS TO EXISTING MANHOLES

The Contractor shall furnish all labor, equipment and materials required to connect the proposed pipeline into existing manholes, and to raise existing manholes tops as shown on the Plans, specified, and directed by the Engineer.

The work includes all excavation, dewatering, breaking into the existing manhole, removal and disposal of rubble and excess material, installation of sewer pipe, sealing the voids around the pipe, re-working manhole bench if necessary, removing old force main and sealing opening, backfilling, compacting and all other work incidental to connection to existing manhole or raising manhole tops.

Payment for Connection to Existing Manholes or Raising/Lowering (adjustment) to Existing Manhole Tops will be made at the appropriate Contract Lump Sum Price or per manhole as designated in the proposal.

<u>Item No.</u>	<u>Description</u>	<u>Unit</u>
4900.1	CONNECT TO EXISTING MANHOLE	EA
4900.2	REMOVE AND ADJUST EXISTING MANHOLE TOPS	EA

C50.51 – FILLING OF EXISTING SANITARY OR STORM SEWER SYSTEM

The Contractor shall furnish all materials, equipment and labor to fill the existing sewer in accordance with the Workmanship and Materials section headed "Filling of Existing Sanitary or Storm Sewer System" and as directed by the Engineer.

The work includes all fill concrete, fill-pipes, dewatering existing sewer, partial demolition of manholes and appurtenances as required, removal and disposal of manhole frames and covers, additional select fill material required to complete the backfilling, protection of existing utilities, structures and trees, repair and replacement of utilities, structures and trees damaged by the Contractor, complete restoration of surface at manhole and fill-pipe locations and at other locations damaged by the Contractor, including pavement base and surface, sidewalk, driveway, curb and gutter and lawn replacement, and all other work related to the complete filling of the sewer, manholes and structures.

The length of sewer, manholes, and structures filled with concrete to be measured for payment will be the actual lengths of respective pipe filled, with no deductions for manholes and structures.

Payment for Filling of Sewer will be made at the Contract Item Unit Price per linear foot of sewer filled.

<u>Item No.</u>	<u>Description</u>	<u>Unit</u>
5051	FILLING OF EXISTING SANITARY OR STORM SEWER SYSTEM	LF

PROPOSAL

To the Mayor and City Council of the City of Tampa, Florida:

Legal Name of Bidder: _____

Bidder's Fictitious Name, *if applicable*: _____

Bidder is a/an: ☐ Individual ☐ Partnership* ☐ Joint Venture* ☐ LLC ☐ Corp. ☐ Other:

Bidder is organized under the laws of: ☐ State of Florida ☐ Other:

Bidder Mailing Address: _____

Bidder's Federal Employee Identification No. (FEI/EIN): _____

Bidder's License No.: _____ Bidder's FDOS (SUNBIZ) Doc. No.: _____
(See Ch. 489, FS; use entity's, individual's only if applicable)

Bidder Contact Name**: _____ Email: _____ Phone: (____) _____

The below named person, appearing before the undersigned authority and after being first duly sworn, for him/herself and on behalf of the entity submitting this Proposal does hereby affirm and declare as follows:

- (1) He/She is of lawful age and is authorized to act on behalf of Bidder (the individual, partnership, corporation, entity, etc. submitting this Proposal) and that all statements made in this document are true and correct to the best of my knowledge.
- (2) If Bidder is operating under a fictitious name, Bidder has currently complied with any and all laws and procedures governing the operation of businesses under fictitious names in the State of Florida
- (3) No person or entity other than Bidder has any interest in this Proposal or in the Contract proposed to be entered into.
- (4) This Proposal is made without any understanding, agreement, or connection with any person or entity making Proposal for the same purposes, and is in all respects fair and without collusion or fraud.
- (5) Bidder is not in arrears to the City of Tampa, upon debt or contract, and is not a defaulter, as surety or otherwise, upon any obligation to the City of Tampa.
- (6) That no officer or employee or person whose salary is payable in whole or in part from the City Treasury is, shall be or become interested, directly or indirectly, as a contracting party, partner, stockholder, surety or otherwise, in this Proposal, or in the performance of the Contract, or in the supplies, materials, or equipment and work or labor to which it relates, or in any portion of the profits thereof.
- (7) Bidder has carefully examined and fully understands the Solicitation and has full knowledge of the scope, nature, and quality of the work to be performed; furthermore, Bidder has carefully examined the site of the work and that, from his own investigations, he has satisfied himself as to the nature and location of the work, the character, quality, and quantity of materials and the kinds and extent of equipment and other facilities needed for the performance of the work, the general and local conditions and all difficulties to be encountered, and all other items which may, in any way, affect the work or its performance.
- (8) Bidder (including its principals) ☐ has | ☐ has NOT been debarred or suspended from contracting with a public entity.
- (9) Bidder ☐ has | ☐ has NOT implemented a drug-free workplace program that meets the requirements of Section 287.087, Florida Statutes.
- (10) For bids \$1,000,000 and over; ☐ The Bidder or its subcontractors participate in an apprenticeship program that is registered with the Florida Department of Education or the United States Department of Labor; or ☐ Bidder commits that at the time it executes a construction contract that it or its subcontractors will be participating in such an apprenticeship program or an on-the-job training program; or ☐ Bidder has submitted documentation that confirms, to the satisfaction of the City of Tampa, that there are no registered apprenticeship or on-the-job training programs for any work to be performed on the construction project.
- (11) Bidder has carefully examined and fully understands all the component parts of the Contract Documents and agrees Bidder will execute the Contract, provide the required Public Construction Bond, and will fully perform the work in strict accordance with the terms of the Contract and Contract Documents therein referred to for the following prices, to wit:

* If a Partnership or Joint Venture, attach Partnership or Joint Venture Agreement.

** Someone the City may contact with questions/correspondence regarding this Solicitation and/or permits.

Contract 24-C-00039 Manhattan Ave. Stormwater Improvements (Vasconia St. to Obispo St.) – Phase 1

Schedule A - Stormwater Dept Paid Items

Item	Description	Unit	Quan	Unit Price in Words	Unit Price	Total Price
104.1	SILT FENCE & EROSION CONTROL	LF	4,123			
104.2	INLET PROTECTION SYSTEM	EA	10			
105.1	ROOT PRUNING	LF	90			
105.2	TREE REMOVAL – 9"-18"	EA	13			
105.3	TREE REMOVAL – 18" +	EA	1			
105.5	TREE BARRICADES	LF	1,296			
120.2	REMOVAL OF UNSUITABLE MATERIAL	CY	289			
121.7	GROUT EXISTING STORMWATER PIPE 24"	LF	953			
160.1	TYPE B STABILIZATION (Residential - Storm) (36" avg depth) - Trench Only - LBR 40 Min.	SY	192			
160.2	TYPE B STABILIZATION (Collector/Arterial - Storm) (18" avg depth) - Trench Only - LBR 40 Min.	SY	2,155			
160.3	TYPE B STABILIZATION (Both Collector/Arterial & Residential - Water) (36" avg depth) - Trench Only - LBR 40 Min.	SY	873			
160.4	TYPE B STABILIZATION (Both Collector/Arterial & Residential - Sewer) (57" avg depth) - Trench Only - LBR 40 Min.	SY	33			
285.1	OPTIONAL BASE, BASE GROUP 06 (Residential) (8" material thickness) - Trench Only	SY	578			
285.2	OPTIONAL BASE, BASE GROUP 06 (Collector/Arterial) (12" material thickness) - Trench Only	SY	4,957			
285.3	OPTIONAL BASE, BASE GROUP 06 (Collector/Arterial) (avg 2.25" material thickness) - For Base Reshaping Service	SY	6,236			
327	1" MECHANICAL MILLING (City of Tampa to confirm limits of milling)	SY/IN	5,985			
337	SUPERPAVE ASPHALTIC CONCRETE, SP12.5 FRICTIONAL COURSE (Collector/Arterial) (1.5" material thickness)	TN	1,412			
334.1	SUPERPAVE ASPHALTIC CONCRETE, SP12.5 STRUCTURAL COURSE (Collector/Arterial) (2.5" material thickness)	TN	2,354			
334.2	SUPERPAVE ASPHALTIC CONCRETE, SP12.5 STRUCTURAL COURSE (Residential) (2" material thickness)	TN	151			
425.AA	Demolish and remove existing Storm Pipes	LF	198			
425.1	TYPE J JUNCTION BOX 4X4	EA	4			
425.2	TYPE J JUNCTION BOX 4X5	EA	5			
425.3	TYPE J JUNCTION BOX 4X7	EA	2			
425.4	TYPE J JUNCTION BOX 5X5	EA	4			
425.11	STORMWATER MANHOLE RISER, P-7, <10' DEEP (3.5") (FDOT)	EA	15			
425.12	TYPE P ROUND JUNCTION STRUCTURE 5' DIA	EA	1			
425.13	INLET, COT CURB TYPE 1, <10'	EA	2			
425.14	INLET, COT CURB TYPE 2, <10'	EA	27			

Contract 24-C-00039 Manhattan Ave. Stormwater Improvements (Vasconia St. to Obispo St.) – Phase 1

425.16	INLET, COT CURB TYPE 3, <10'	EA	12		
430.1	15" ROUND STORMWATER PIPE (RCP)	LF	344		
430.1A	15" ROUND STORMWATER PIPE (CLASS IV) (RCP)	LF	108		
430.2	18" ROUND STORMWATER PIPE (RCP)	LF	271		
430.2A	18" ROUND STORMWATER PIPE (CLASS IV) (RCP)	LF	279		
430.3	24" ROUND STORMWATER PIPE (RCP)	LF	311		
430.3A	24" ROUND STORMWATER PIPE (CLASS IV) (RCP)	LF	142		
430.4	36" ROUND STORMWATER PIPE (RCP)	LF	962		
430.5	42" ROUND STORMWATER PIPE (RCP)	LF	375		
430.6	54" ROUND STORMWATER PIPE (RCP)	LF	214		
430.7	12"X18" ELLIPTICAL STORMWATER PIPE, (ERCP) CLASS IV	LF	48		
430.8	14"X23" ELLIPTICAL STORMWATER PIPE, (ERCP) CLASS IV	LF	28		
430.9	CONNECT STORMWATER PIPE TO EXISTING STORMWATER STRUCTURE (30-60")	EA	1		
520.1	CONCRETE CURB & GUTTER, DROP CURB	LF	758		
520.2	CONCRETE CURB & GUTTER, TYPE F	LF	2,959		
522.1	SIDEWALK CONCRETE, 4" THICK (SIDEWALKS)	SY	1,248		
522.1A	PERVIOUS SIDEWALK CONCRETE, 4" THICK	SY	162		
522.2	SIDEWALK CONCRETE, 6" THICK (DRIVEWAYS)	SY	1,139		
527	ADA COMPLIANT RAMPS (Concrete Included)	EA	20		
528	BRICK DRIVEWAYS REPLACEMENT	SF	665		
711.1	THERMOPLASTIC, STANDARD, WHITE, SOLID, 6"	LF	5,223		
711.2	THERMOPLASTIC, STANDARD, WHITE, SOLID, 12"	LF	114		
711.3	THERMOPLASTIC, STANDARD, WHITE, SOLID, 24"	LF	33		
711.4	THERMOPLASTIC, STANDARD, WHITE, SKIP 6"	LF	5,650		
711.5	THERMOPLASTIC, STANDARD, WHITE, MESSAGE	EA	15		
711.6	THERMOPLASTIC, STANDARD, WHITE, ARROW	EA	36		
711.7	THERMOPLASTIC, STANDARD, YELLOW, SOLID, 6"	LF	4,496		
711.8	THERMOPLASTIC, STANDARD, YELLOW, SKIP 6"	LF	5,140		
8901	RESOD DISTURBED AREAS (ROW)	SY	3,686		
				SUBTOTAL	

Contract 24-C-00039 Manhattan Ave. Stormwater Improvements (Vasconia St. to Obispo St.) – Phase 1

100	CONTINGENCY - STORMWATER	NTE	1		\$ 250,000.00	\$ 250,000.00
101	MOBILIZATION	NTE	1			
102	MAINTENANCE OF TRAFFIC	NTE	1			
TOTAL						

Schedule B - Water Dept Paid Items

Contract Item Number	Description	Unit	Quan	Estimate \$	Total \$
2106	F&I 6" DUCTILE IRON PIPE	LF	573		
2108	F&I 8" DUCTILE IRON PIPE	LF	2,000		
2200	F&I 2" HDPE TUBING BY HDD W/HDPE ADAPTERS AND HDPE FITTINGS AT VARIOUS DEPTHS	LF	11		
2500	REMOVE 3" AND SMALLER DIAMETER ABANDONED PIPE	LF	50		
2501	REMOVE 4"-12" DIAMETER ABANDONED PIPE	LF	250		
2600	CUT & PLUG 3' AND SMALLER DIAMETER PIPE	EA	10		
2601	CUT & PLUG 4", 6" AND 8" DIAMETER PIPE	EA	28		
2800	MAKE TAP AND FURNISH MATERIALS TO CONNECT 3" AND SMALLER WATER MAINS TO NEW/EXISTING MAINS (0-15 FT. IN LENGTH)	EA	1		
4004	F&I 6" DUCTILE IRON PLUG OR CAP W/ DIP, CIP OR PVC	EA	1		
4005	F&I 6" DUCTILE IRON BENDS, OFFSET, SLEEVES OR REDUCERS W/ DIP, CIP OR PVC	EA	33		
4006	F&I 6" DUCTILE IRON TEE W/ DIP, CIP OR PVC	EA	2		
4009	F&I 8" DUCTILE IRON BENDS, OFFSETS, SLEEVES OR REDUCERS W/ DIP, CIP OR PVC	EA	53		
4010	F&I 8" DUCTILE IRON TEE W/ DIP, CIP OR PVC	EA	13		
5000	F&I FULL FIRE HYDRANT ASSEMBLY	EA	6		
5200	REMOVE AND SALVAGE OF FIRE HYDRANT	EA	6		
6000	F&I 2" GATE VALVE WITH BOX ON DIP, CIP OR PVC	EA	1		
6002	F&I 6" GATE OR TAPPING VALVE WITH BOX ON DIP, CIP OR PVC	EA	15		
6004	F&I 8" GATE OR TAPPING VALVE WITH BOX ON DIP, CIP OR PVC	EA	10		
6102	F&I 6" LINESSTOP ON EXISTING WATER MAIN	EA	6		
6104	F&I 8" LINESSTOP ON EXISTING WATER MAIN	EA	3		

Contract 24-C-00039 Manhattan Ave. Stormwater Improvements (Vasconia St. to Obispo St.) – Phase 1

7002	FURNISH AND INSTALL 8" TAPPING SLEEVE AND TAP	EA	2			
8100	FURNISH TAP AND INSTALL 3/4" OR 1" METER SERVICE ON PVC, DIP, OR CIP (0-15')	EA	10			
8101	FURNISH, TAP AND INSTALL 3/4" METER SERVICE ON PVC, DIP OR CIP (+15-80')	EA	21			
9400	GROUT 8"-12" DIAMETER PIPE	LF	2,000			
SUBTOTAL						

100.1	CONTINGENCY - Water	NTE	1		\$ 100,000.00	\$ 100,000.00
TOTAL						

Schedule C - Wastewater Dept Paid Items

Contract Item Number	Description	Unit	Quan	Estimate \$		Total \$
121.1	GROUT EXISTING MANHOLES	EA	3			
121.2	GROUT EXISTING SANITARY PIPE 8"	LF	262			
121.3	GROUT EXISTING SANITARY PIPE 24"	LF	165			
121.4	GROUT EXISTING SANITARY PIPE 27"	LF	510			
900.1	8" DIA. PVC SANITARY GRAVITY PIPE (C-900-DR-18)	LF	31			
900.2	12" DIA. PVC FM PIPE (DR-9)	LF	16			
1706	6-INCH DIAMETER PVC PIPE HOUSE LATERAL (SDR-35) (<30') REPLACEMENT	EA	6			
3508	8-INCH FLEXIBLE CONNECTOR (Connect to existing pipe)	EA	2			
4301	PRECAST CONCRETE SHALLOW TYPE MANHOLE	EA	1			
4800.1	MANHOLE REHABILITATION – T-LOCK REPAIRS	SF	80			
4900.1	CONNECT TO EXISTING MANHOLE	EA	2			
4900.2	REMOVE AND RAISE EXISTING MANHOLE TOPS	EA	17			
5051	FILLING OF EXISTING SANITARY OR STORM SEWER SYSTEM	LF	30			

TOTAL

Computed Total Price in Words: _____
dollars and _____ cents.

Computed Total Price in Figures: \$

Bidder acknowledges that the following addenda have been received and that the changes covered by the addendum(s) have been taken into account in this proposal: #1 ____ #2 ____ #3 ____ #4 ____ #5 ____ #6 ____ #7 ____ #8 ____.

Bidder acknowledges the requirements of the City of Tampa's Equal Business Opportunity Program.

Bidder acknowledges that it is aware of Florida's Trench Safety Act (Sections 553.60-553.64, Florida Statutes), and agrees that Bidder together with any involved subcontractors will comply with all applicable trench safety standards. Bidder further acknowledges that included in the various items of this Proposal and the total bid price (as applicable) are costs for complying with the Trench Safety Act. Bidder further identifies the costs and methods summarized below:

	Trench Safety Measure (Description)	Unit of Measure (LF, SY)	Unit Quantity	Unit Cost	Extended Cost
A.	_____	_____	_____	_____	_____
B.	_____	_____	_____	_____	_____
C.	_____	_____	_____	_____	_____
Total Cost: \$					_____

Accompanying this Proposal is a certified check, cashier's check or Tampa Bid Bond (form included herein must be used) for at least five percent (5%) of the total amount of the Proposal which check shall become the property of the City, or which bond shall become forthwith due and payable to the City, if this Proposal shall be accepted by the City and the Bidder shall fail to enter into a legally binding contract with and to furnish the required Public Construction Bond to the City within twenty (20) days after the date of its receipt of written Notice of Award by the City so to do.

FAILURE TO COMPLETE THE ABOVE MAY RESULT IN THE PROPOSAL BEING DECLARED NON-RESPONSIVE.

[SEAL] Name of Bidder: _____
Authorized Signature: _____
Signer's Printed Name: _____
Signer's Title: _____

STATE OF _____
COUNTY OF _____

For an entity: The forgoing instrument was sworn (or affirmed) before me this ____ day of _____, 20____ by _____ as _____ of _____, a/n ☐ Partnership ☐ Joint Venture ☐ LLC ☐ Corp ☐ Other: _____, on behalf of such entity. Such individual is ☐ personally known to me or ☐ produced a/n _____ state driver's license as identification.

For an individual: The forgoing instrument was sworn (or affirmed) before me this ____ day of _____, 20____ by _____, who is ☐ personally known to me or ☐ produced a/n _____ state driver's license as identification.

[NOTARY SEAL] Notary Public, State of _____
Notary Printed Name: _____
Commission No.: _____
My Commission Expires: _____

CONSOLIDATED STATE LAW AFFIDAVIT

AFFIDAVIT OF COMPLIANCE WITH CONVICTED VENDOR LIST (PUBLIC ENTITY CRIME) PURSUANT TO SECTION 287.133, FLORIDA STATUTES, PROHIBITION AGAINST CONTRACTING WITH SCRUTINIZED COMPANIES PURSUANT TO SECTION 287.135, FLORIDA STATUTES, PROHIBITION AGAINST HUMAN TRAFFICKING PURSUANT TO SECTION 787.06, FLORIDA STATUTES, COMPLIANCE WITH E-VERIFY PURSUANT TO SECTION 448.095, FLORIDA STATUTES, PROHIBITION AGAINST ECONOMIC INCENTIVES TO FOREIGN COUNTRIES OF CONCERN PURSUANT TO SECTION 288.0071, FLORIDA STATUTES, AND COMPLIANCE WITH FOREIGN COUNTRIES OF CONCERN PURSUANT TO SECTION 287.138, FLORIDA STATUTES.

The undersigned Affiant, on behalf of the Entity listed below ("Entity"), hereby attests under penalty of perjury as follows:

1. Public Entity Crimes

- a. Affiant understands that a "person" or "affiliate" who has been placed on the "convicted vendor list" following a "conviction" for a "public entity crime" (as those terms are defined in Section 287.133, Florida Statutes) for a period of 36 months following the date of being placed on the convicted vendor list, is ineligible to contract with or submit a bid, proposal or reply to contract with the City of Tampa. Entities placed on either the "discriminatory vendor list" or "antitrust vendor list" are ineligible to transact business with the City of Tampa.
- b. Affiant understands and attests that neither Affiant, nor any person or affiliate of the Entity, nor the Entity have been placed on any of the above referenced vendor lists that would render the Entity ineligible to contract with or submit a bid, proposal or reply to contract with the City of Tampa.

2. Scrutinized Companies

- a. Affiant understands that pursuant to Section 287.135(2)(a), Florida Statutes, the Entity would be ineligible to contract with or submit a bid, proposal or reply to contract with the City of Tampa if the Entity is on the "Scrutinized Companies that Boycott Israel List" (created pursuant to Section 215.4725, Florida Statutes) or is engaged in a boycott of Israel. If the value of the contract is one million dollars or more if, at the time of bidding on, submitting a proposal or reply for, or entering into or renewing a contract, the Entity:
 1. Is on the Scrutinized Companies with Activities in Sudan List or the Scrutinized Companies with Activities in Iran Terrorism Sectors List, created pursuant to Section 215.473, Florida Statutes; or
 2. Is engaged in business operations in Cuba or Syria.
- b. Affiant attests that neither Affiant nor the Entity are on the Scrutinized Companies that Boycott Israel List, Scrutinized Companies with Activities in Sudan List or the Scrutinized Companies with Activities in Iran Terrorism Sectors List, nor are we engaged in a boycott of Israel, and understand that any resulting contract may be terminated for a falsification of this Affidavit.

3. E-Verify

- a. Affiant understands and attests that pursuant to Section 448.095(5), Florida Statutes, the Entity must comply with Florida's E-Verify law to enter into a contract with the City of Tampa.
- b. The undersigned Entity is registered with and uses the United States Department of Homeland Security's E-Verify system to verify the work authorization status of all new employees.
- c. No public employer has terminated a contract with the Entity pursuant to Section 448.095(5), Florida Statutes, within the year immediately preceding the date of contracting or submitting a bid, proposal or replay to contract with the City of Tampa.
- d. Entity is currently in compliance and will remain in compliance, for the duration of any contract with the City of Tampa, with all requirements of Section 448.095(5), Florida Statutes.
- e. Affiant understands and attests that, if there is a good faith belief that the Entity has knowingly violated Section 448.09(1), Florida Statutes, there is an obligation on the part of the City of Tampa to terminate a contract pursuant to Section 448.095(5), Florida Statutes.
- f. Affiant understands and attests that, if there is a good faith belief that one of Entity's subcontractor(s) has knowingly violated the Section 448.09(1), Florida Statutes, but the Entity has otherwise complied with its obligations thereunder, then the Entity will be required to immediately terminate the contract with the subcontractor in order to continue providing services to the City of Tampa.

4. Anti-Human Trafficking

Affiant hereby understands and attests that the undersigned Entity does not use coercion of labor or services as those terms are defined in section 787.06(13), Florida Statutes.

5. Compliance with Prohibition Against Economic Incentives to Foreign Countries of Concern.

Affiant, on behalf of the Entity attest to the following:

That pursuant to Section 288.0071, F.S, as a condition of this Agreement, the Entity attests to the following: that it is not a foreign entity or a foreign country of concern such as the People's Republic of China, the Russian Federation, the Islamic Republic of Iran, the Democratic People's Republic of Korea, the Republic of Cuba, the Venezuelan regime of Nicolas Maduro or the Syrian Arab Republic with whom the City is prohibited from contracting with under Florida law.

6. Compliance with Foreign Countries of Concern

Affiant, on behalf of the Entity attest to the following:

- a. Entity is not owned by the government of a foreign country of concern as defined in Section 287.138, Florida Statutes. (Source: § 287.138(2)(a), Florida Statutes.)

- b. The government of a foreign country of concern does not have a controlling interest in Entity. (Source: § 287.138(2)(b), Florida Statutes.)
- c. Entity is not organized under the laws of, and does not have a principal place of business in a foreign country of concern. (Source: § 287.138(2)(c), Florida Statutes.)

The undersigned is authorized to execute this Affidavit on behalf of Entity.

The undersigned further sayeth naught.

Date: _____ (Affiant) Signed: _____

Entity: _____ Name: _____

Title: _____

STATE OF _____

COUNTY OF _____

SWORN to (or affirmed) and subscribed before me, by means of ☐ physical presence or ☐ online notarization, this _____ day of _____, 20__, by _____, as _____, who is personally known to me or who has produced _____ as identification.

[AFFIX NOTARY SEAL/STAMP]

Signature of Notary

Name: _____

(Print or Type Name)

Notary Public: State of Florida

My Commission Expires _____



Page 2 of 4 – DMI Solicited/Utilized Instructions for completing The Sub-(Contractors/Consultants/ Suppliers) Solicited Form (DMI 10 Form)

This form must be submitted with all bids or proposals. All subcontractors (regardless of ownership or size) solicited and subcontractors from whom unsolicited quotations were received must be included on this form. The instructions that follow correspond to the headings on the form required to be completed. Note: Ability or desire to self-perform all work shall not exempt the prime from Good Faith Efforts to achieve participation.

- **Contract No.** This is the number assigned by the City of Tampa for the bid or proposal.
- **Contract Name.** This is the name of the contract assigned by the City of Tampa for the bid or proposal.
- **Contractor Name.** The name of your business and/or doing business as (dba) if applicable.
- **Address.** The physical address of your business.
- **Federal ID. FIN.** A number assigned to your business for tax reporting purposes.
- **Phone.** Telephone number to contact business.
- **Fax.** Fax number for business.
- **Email.** Provide email address for electronic correspondence.
- **No Firms were contacted or solicited for this contract.** Checking the box indicates that a pre-determined Subcontract Goal or Participation Plan Requirement was not set by the City resulting in your business not using subcontractors and will self-perform all work. If during the performance of the contract you employ subcontractors, the City must pre-approve subcontractors. Use of the “Sub-(Contractors/Consultants/Suppliers) Payments” form (DMI 30 Form) must be submitted with every pay application and invoice. Note: Certified **SLBE** or **WMBE firms** bidding as Primes **are not exempt** from outreach and solicitation of subcontractors.
- **No Firms were contacted because.** Provide brief explanation why no firms were contacted or solicited.
- **See attached documents.** Check box, if after you have completed the DMI Form in its entirety, you need more space to list additional firms and/or if you have supplemental information/documentation relating to the form. All DMI data not submitted on the DMI 10 Form must be in the same format and have all requested data from DMI 10 Form included.

The following instructions are for information of any and all subcontractors solicited.

- **“S” = SLBE, “W” = WMBE.** Enter “S” for firms Certified by the City as Small Local Business Enterprises and/or “W” for firms Certified by the City as either Women/Minority Business Enterprise; **“O” = Non-certified others.**
- **Federal ID. FIN.** A number assigned to a business for tax reporting purposes. This information is critical in proper identification and payment of the contractor/subcontractor.
- **Company Name, Address, Phone & Fax.** Provide company information for verification of payments.
- **Type of Ownership.** Indicate the Ethnicity and Gender of the owner of the subcontracting business.
- **Trade, Services, or Materials** indicate the trade, service, or materials provided by the subcontractor. NIGP codes aka “National Institute of Governmental Purchasing” are listed at top section of document.
- **Contact Method L=letter, F=fax, E=Email, P=Phone.** Indicate with letter the method(s) of soliciting for bid.
- **Quote or Resp. (response) Rec’d (received) Y/N.** Indicate “Y” Yes if you received a quotation or if you received a response to your solicitation. Indicate “N” No if you received no response to your solicitation from the subcontractor. Must keep records: log, ledger, documentation, etc. that can validate/verify.

If additional information is required or you have questions, please contact the Equal Business Opportunity Program - Office of Equal Business Opportunity at (813) 274-5522.



Page 4 of 4 DMI – Solicited/**Utilized**

Instructions for completing The Sub-(Contractors/Consultants/ Suppliers) to be Utilized Form (DMI 20 Form)

This form must be submitted with all bids or proposals. All subcontractors (regardless of ownership or size) projected to be utilized must be included on this form. Note: Ability or desire to self-perform all work shall not exempt the prime from Good Faith Efforts to achieve participation.

Contract No. This is the number assigned by the City of Tampa for the bid or proposal.

- **Contract Name.** This is the name of the contract assigned by the City of Tampa for the bid or proposal.
- **Contractor Name.** The name of your business and/or doing business as (dba) if applicable.
- **Address.** The physical address of your business.
- **Federal ID.** FIN. A number assigned to your business for tax reporting purposes.
- **Phone.** Telephone number to contact business.
- **Fax.** Fax number for business.
- **Email.** Provide email address for electronic correspondence.
- **No Subcontracting/consulting (of any kind) will be performed on this contract.** Checking box indicates your business will not use subcontractors when no Subcontract Goal or Participation Plan Requirement was set by the City, but will self-perform all work. When subcontractors are utilized during the performance of the contract, the “Sub-(Contractors/Consultants/Suppliers) Payments” form (DMI 30 Form) must be submitted with every pay application and invoice. Note: certified **SLBE or WMBE firms** bidding as Primes **are not exempt** from outreach and solicitation of subcontractors, including completion and submitting Form-10 and Form-20.
- **No Firms listed To-Be-Utilized.** Check box; provide brief explanation why no firms were retained when a goal or participation plan requirement was set on the contract. **Note: Mandatory compliance with Good Faith Effort outreach (GFCP) requirements applies (DMI 50 Form) and supporting documentation must accompany the bid.**
- **See attached documents.** Check box, if after completing the DMI Form in its entirety, you need more space to list additional firms and/or if you have supplemental information/documentation relating to the scope/value/percent utilization of subcontractors. Reproduce copies of DMI-20 and attach. All data not submitted on duplicate forms must be in the same format and content as specified in these instructions.

The following instructions are for information of Any and All subcontractors To Be Utilized.

- **Federal ID.** FIN. A number assigned to a business for tax reporting purposes. This information is critical in proper identification of the subcontractor.
- **“S” = SLBE, “W” = WMBE.** Enter “S” for firms Certified by the City as Small Local Business Enterprises and/or “W” for firms Certified by the City as Women/Minority Business Enterprise; **“O” = Non-certified others.**
- **Company Name, Address, Phone & Fax.** Provide company information for verification of payments.
- **Type of Ownership.** Indicate the Ethnicity and Gender of the owner of the subcontracting business.
- **Trade, Services, or Materials (NIGP code if Known)** Indicate the trade, service, or material provided by the subcontractor. Abbreviated list of NIGP is available at <http://www.tampagov.net/DMI> “Information Resources”.
- **Amount of Quote, Letters of Intent** (required for both SLBEs and WMBEs).
- **Percent of Work/Contract.** Indicate the percent of the total contract price the subcontract(s) represent. For CCNA only (i.e. Consultant A/E Services) you must indicate subcontracts as percent of total scope/contract.
- **Total Subcontract/Supplier Utilization.** – Provide total dollar amount of all subcontractors/suppliers projected to be used for the contract. (Dollar amounts may be optional in CCNA depending on solicitation format).
- **Total SLBE Utilization.** Provide total dollar amount for all projected SLBE subcontractors/Suppliers used for this contract. (Dollar amounts may be optional in CCNA proposals depending on the solicitation format).
- **Total WMBE Utilization.** Provide total dollar amount for all projected WMBE subcontractors/Suppliers used for this contract. (Dollar amounts may be optional in CCNA proposals depending on the solicitation format).
- **Percent SLBE Utilization.** Total amount allocated to SLBEs divided by the total bid/proposal amount.
- **Percent WMBE Utilization.** Total amount allocated to WMBEs divided by the total bid/proposal amount.

If additional information is required or you have questions, please contact the Equal Business Opportunity Program - Office of Equal Business Opportunity at (813) 274-5522.