



CITY OF TAMPA

Bob Buckhorn, Mayor

CONTRACT ADMINISTRATION DEPARTMENT

David L. Vaughn, AIA, Director

ADDENDUM NO. 1

DATE: June 26, 2013

Contract 13-C-00033; Fire Station 19 Improvements

Bidders on the above referenced project are hereby notified that the following addendum is made to the Contract Documents. BIDS TO BE SUBMITTED SHALL CONFORM TO THIS NOTICE.

- Item 1: Permit and Utility Fee clarification: All fees are paid by the City.
- Item 2: Refrigerator Model Change: Bid basis is Kenmore 04641153000- Model #41153 (stainless steel)
- Item 3: Dryer Model Change: Bid basis is Kenmore 26-81372 White
- Item 4: Apparatus room ceiling height clarification: Ceiling is 18'-0" AFF.
- Item 5: Flag Pole height clarification: Flag Pole height is 35'-0".
- Item 6: Add plumbing sheet P-6.0
- Item 7: ARRA requirements Clarification: Delete all references. Contractor is encouraged to provide buy American products.
- Item 8: Dumpster Clarification: Replace Detail 2 on sheet C-1 with attached revised detail.
- Item 9: Sheet G-1, Index, Revise as follows: Delete sheet M-1.2 from Index.
- Item 10: Add the attached Electrical Sheet E-3.1.
- Item 11: Attached for your reference is the Pre-Bid meeting sign-in sheet.

All other provisions of the Contract Documents and Specifications not in conflict with this Addendum shall remain in full force and effect. Questions are to be e-mailed to Contract Administration@tampagov.net.

Jim Greiner

Jim Greiner, P.E., Contract Management Supervisor



CITY OF TAMPA
 CONTRACT ADMINISTRATION
 DEPARTMENT
 PLANNING AND DESIGN DIVISION
 306 E. JACKSON STREET 4 NORTH
 TAMPA, FLORIDA 33602
 p: 813. 274. 8456 - f: 813. 274. 8080
 url: www.tampagov.net

James E. Jackson, Jr. AIA, NOMA
 City Architect
 Edward D. Rice, AIA
 Project Architect
 Kevin L. Henika, AIA
 Project Architect
 Thomas A. Hester, Sr., AIA, NOMA
 Project Architect
 David R. Pagitt
 Supervisor, Architectural Drafting
 Kinsey C. Tillman
 Drafting Technician
 Jerry P. Sanders
 Drafting Technician
 Byron K. Thomas
 Drafting Technician

MEP CONSULTANT
 GRINER ENGINEERING, INC.
 1628 1st. AVENUE NORTH
 ST. PETERSBURG, FL 33713

STRUCTURAL CONSULTANT
 ROGAL-TGA CONSULTING
 ENGINEERS, INC.
 124 5th AVENUE SOUTH, SUITE B
 SAFETY HARBOR, FL 34695

CIVIL CONSULTANT
 GOLDER ASSOCIATES, INC.
 5100 W. LEMON STREET #114
 TAMPA, FL 33609

LANDSCAPE CONSULTANT
 DAVID CONNER & ASSOCIATES
 1509 W. SWANN AVENUE, SUITE 255
 TAMPA, FL 33606

FIRE STATION 19
 7910 INTERBAY BLVD.
 TAMPA, FL

DPW FILE NUMBER

DPW NUMBER
 FD0116

ISSUE DATE
 MAY 31, 2013

DRAWN BY

REVISIONS

- △
- △
- △

SEAL

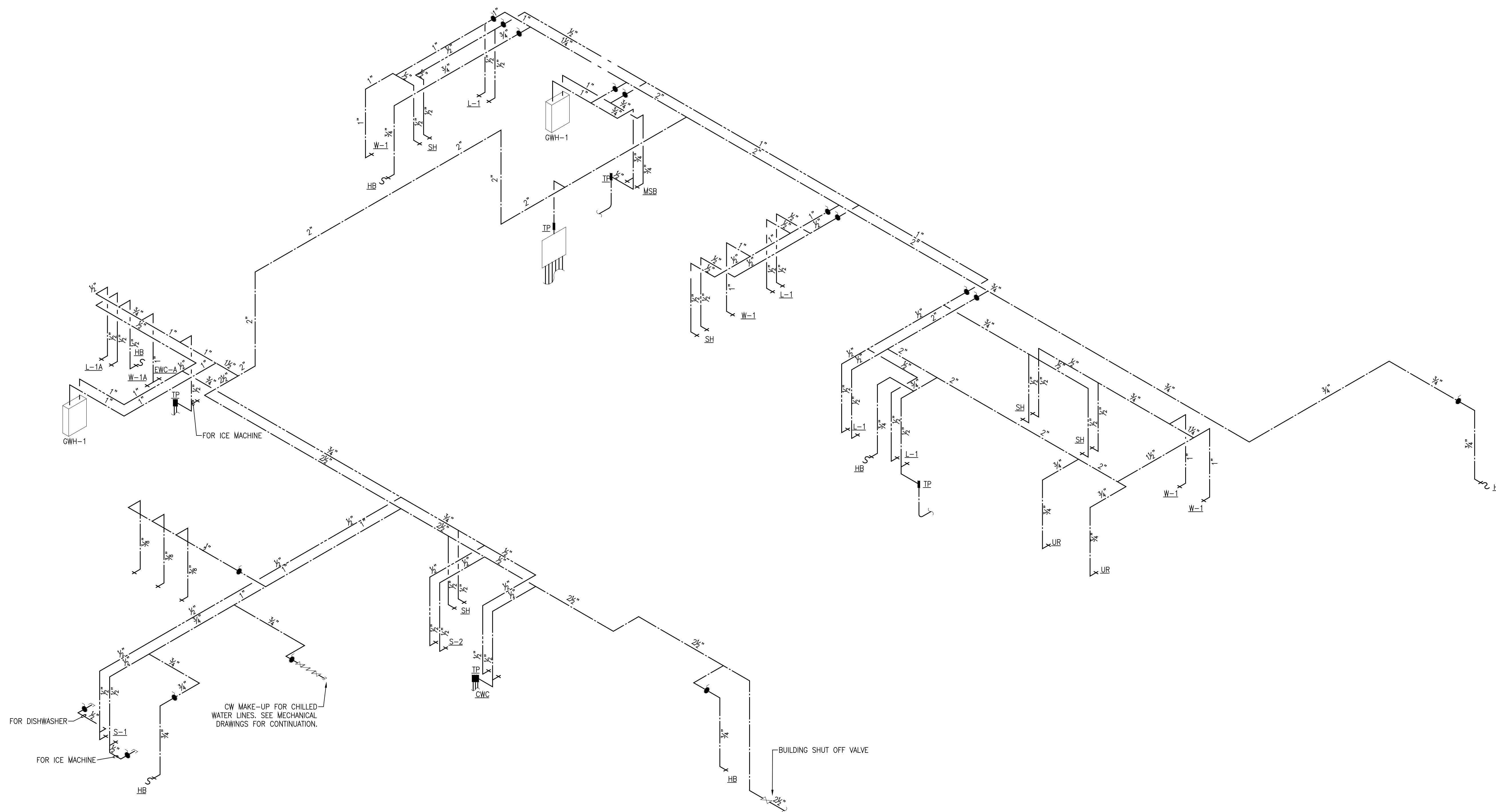
SCALE: N.T.S.

SUPPLY RISERS

SHEET NUMBER

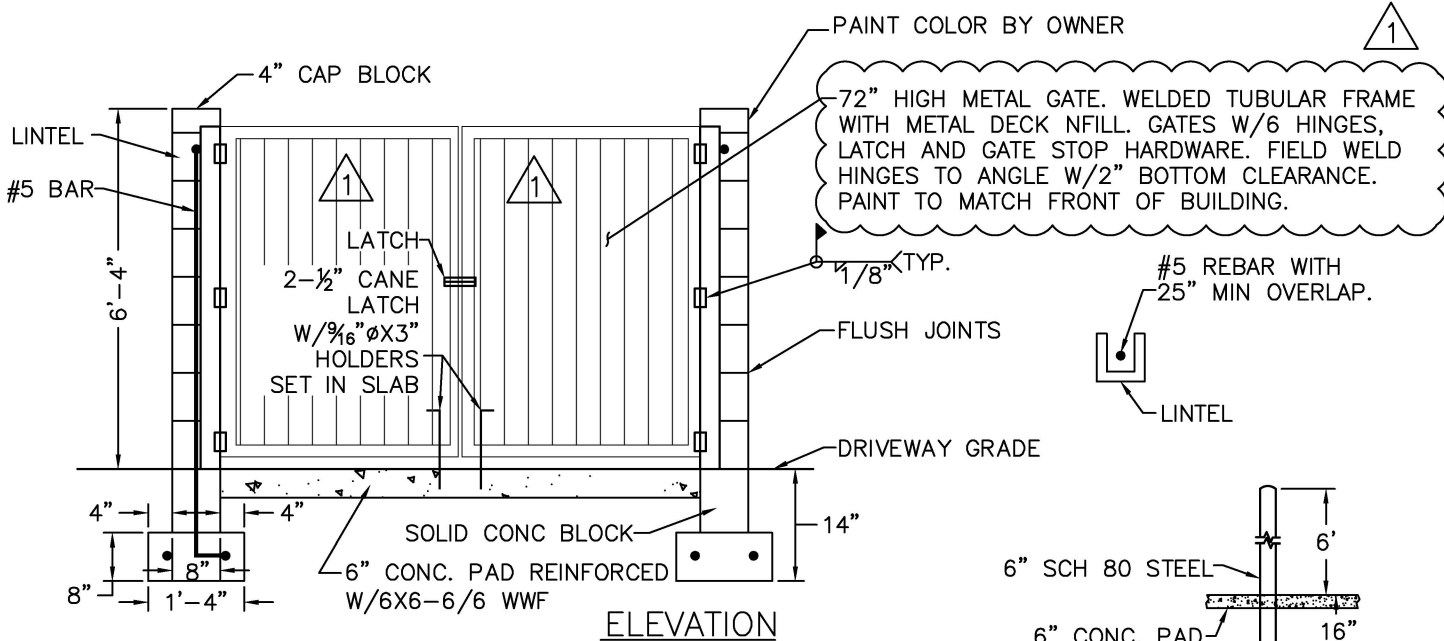
P-6.0

OF

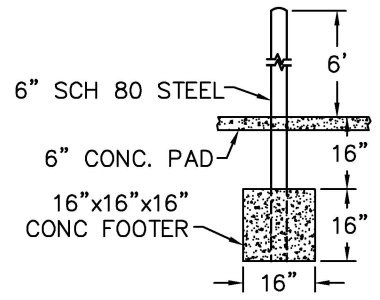


SUPPLY RISER
 SCALE: NOT TO SCALE

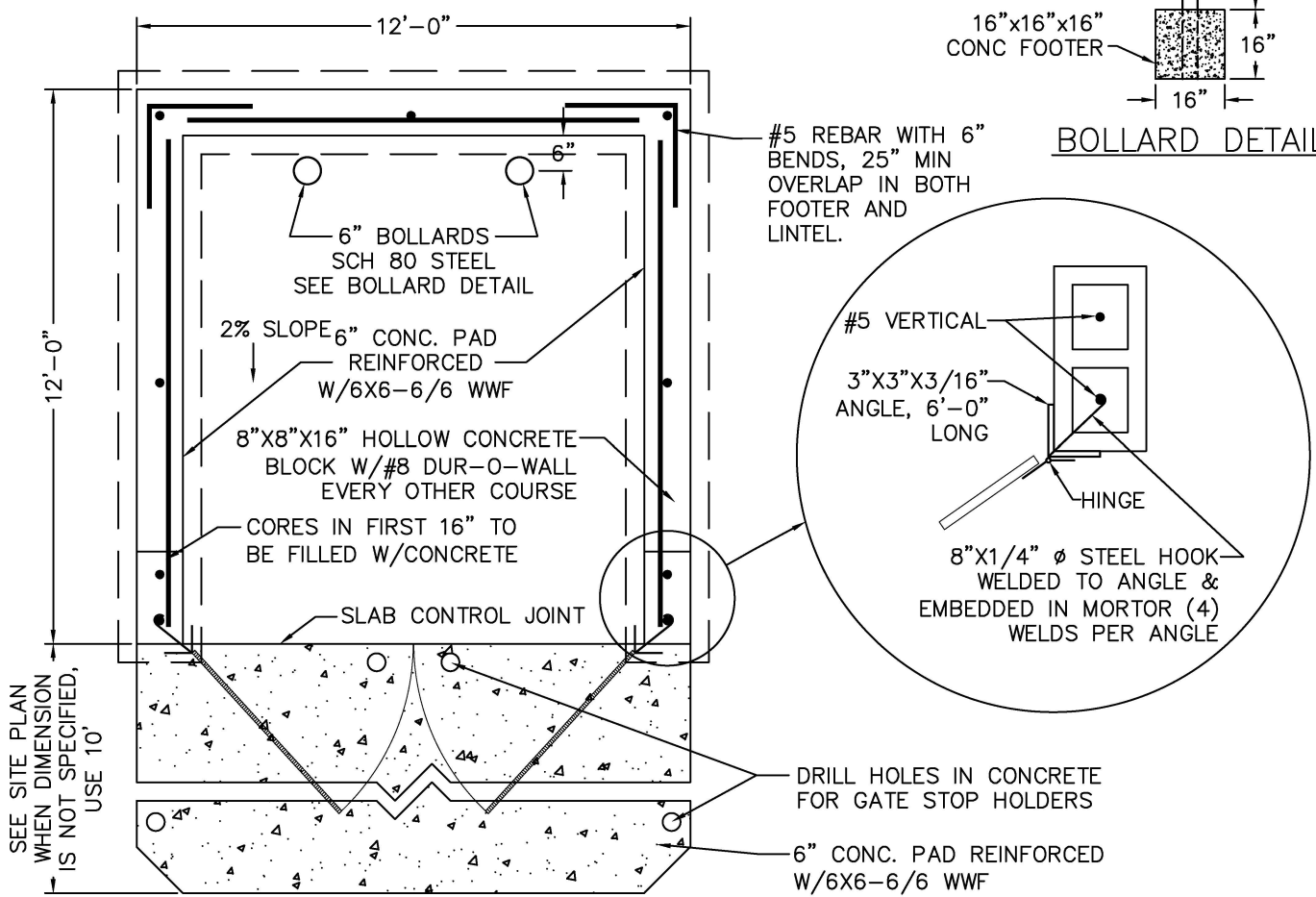
G	GRINER ENGINEERING, INC.	Date	05/31/2013
	1628 First Avenue North	Drawn	ADB
	St. Petersburg, Florida 33713	Designed	ADB
	Phone: (727)822-2335	FOR	JHG
	Fax: (727)823-0361	Job no.	13052
Certificate of Authorization #3173			



ELEVATION



BOLLARD DETAIL



PLAN



CITY OF TAMPA
 CONTRACT ADMINISTRATION
 DEPARTMENT
 PLANNING AND DESIGN DIVISION
 306 E. JACKSON STREET 4 NORTH
 TAMPA, FLORIDA 33602
 P: 813.274.8456 - F: 813.274.8080
 URL: www.tampagov.net

James E. Jackson, Jr. AIA, NOMA
 City Architect
 Edward D. Rice, AIA
 Project Architect
 Kevin L. Henika, AIA
 Project Architect
 Thomas A. Hester, Sr., AIA, NOMA
 Project Architect
 David R. Pagitt
 Supervisor, Architectural Drafting
 Kinsey C. Tillman
 Drafting Technician
 Jerry P. Sanders
 Drafting Technician
 Byron K. Thomas
 Drafting Technician

MEP CONSULTANT
GRINER ENGINEERING, INC.
 1628 1st AVENUE NORTH
 ST. PETERSBURG, FL 33713

STRUCTURAL CONSULTANT
ROGAL-TGA CONSULTING ENGINEERS, INC.
 124 5th AVENUE SOUTH, SUITE B
 SAFETY HARBOR, FL 34695

CIVIL CONSULTANT
GOLDER ASSOCIATES, INC.
 5100 W. LEMON STREET #14
 TAMPA, FL 33609

LANDSCAPE CONSULTANT
DAVID CONNER & ASSOCIATES
 1509 W. SWANN AVENUE SUITE 255
 TAMPA, FL 33606

FIRE STATION 19
 7910 INTERBAY BLVD.
 TAMPA, FL

DPW FILE NUMBER

DPW NUMBER
FD016

ISSUE DATE
MAY 31, 2013

DRAWN BY

REVISIONS
 △
 △
 △

SEAL

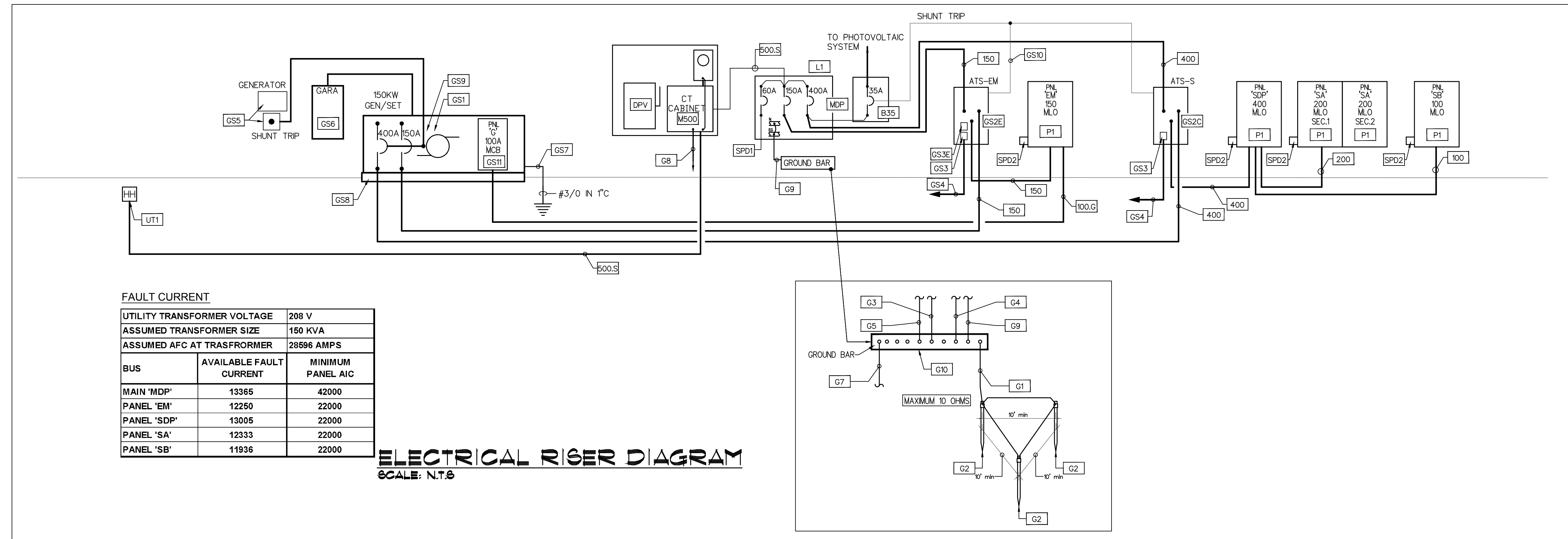
Signature Date
 IVAYLO I. TODOROV
 FLORIDA P.E.
 #73028

SCALE: N.T.S.

ELECTRICAL RISER DIAGRAM

SHEET NUMBER

E3.1
 X OF X



FAULT CURRENT

UTILITY TRANSFORMER VOLTAGE	208 V	
ASSUMED TRANSFORMER SIZE	150 KVA	
ASSUMED AFC AT TRANSFORMER	28596 AMPS	
BUS	AVAILABLE FAULT CURRENT	MINIMUM PANEL AIC
MAIN 'MDP'	13365	42000
PANEL 'EM'	12250	22000
PANEL 'SDP'	13005	22000
PANEL 'SA'	12333	22000
PANEL 'SB'	11936	22000

ELECTRICAL RISER DIAGRAM
 SCALE: N.T.S.

GENERAL FLORIDA BUILDING CODE NOTES:

ALL ELECTRICAL WORK SHALL COMPLY WITH FLORIDA BUILDING CODE, COMMERCIAL ENERGY EFFICIENCY.

505.7.3 VOLTAGE DROP.
 505.7.3.1 FEEDERS AND CUSTOMER OWNED SERVICE CONDUCTORS. FEEDER AND CUSTOMER OWNED SERVICE CONDUCTORS SHALL BE SIZED FOR A MAXIMUM VOLTAGE DROP OF 2 PERCENT AT DESIGN LOAD.
 505.7.3.2 BRANCH CIRCUITS. BRANCH CIRCUIT CONDUCTORS SHALL BE SIZED FOR A MAXIMUM VOLTAGE DROP OF 3 PERCENT AT DESIGN LOAD.

505.7.4 COMPLETION REQUIREMENTS

505.7.4.1 DRAWINGS. CONSTRUCTION DOCUMENTS SHALL REQUIRE THAT WITHIN 30 DAYS AFTER THE DATE OF SYSTEM ACCEPTANCE, RECORD DRAWINGS OF THE ACTUAL INSTALLATION SHALL BE PROVIDED TO THE BUILDING OWNER INCLUDING:
 1. A SINGLE-LINE DIAGRAM OF THE BUILDING ELECTRICAL DISTRIBUTION SYSTEM AND
 2. FLOOR PLANS INDICATING LOCATION AND AREA SERVED FOR ALL DISTRIBUTION.

505.7.4.2 MANUALS. CONSTRUCTION DOCUMENTS SHALL REQUIRE THAT AN OPERATING MANUAL AND MAINTENANCE MANUAL BE PROVIDED TO THE BUILDING OWNER. THE MANUALS SHALL INCLUDE, AT A MINIMUM, THE FOLLOWING:
 1. SUBMITTAL DATA STATING EQUIPMENT RATING AND SELECTED OPTIONS FOR EACH PIECE OF EQUIPMENT REQUIRING MAINTENANCE.
 2. OPERATION MANUALS AND MAINTENANCE MANUALS FOR EACH PIECE OF EQUIPMENT REQUIRING MAINTENANCE. REQUIRED ROUTINE MAINTENANCE ACTIONS SHALL BE CLEARLY IDENTIFIED.
 3. NAMES AND ADDRESSES OF AT LEAST ONE QUALIFIED SERVICE AGENCY.

505.7.5 ELECTRICAL MOTORS. ELECTRICAL MOTORS SHALL COMPLY WITH THE REQUIREMENTS OF THE ENERGY POLICY ACT OF 1992.

GENERAL ELECTRICAL RISER NOTES:

1. ELECTRICAL CONTRACTOR SHALL COORDINATE ALL ELECTRICAL WORK WITH ARCHITECT, OWNER AND GENERAL CONTRACTOR PRIOR TO BID AND START ANY WORK. NO EXCEPTION.

2. ELECTRICAL CONTRACTOR SHALL SUBMIT A PROPOSED CONSTRUCTION SCHEDULE WITH INFORMATION REGARDING ANY POSSIBLE ELECTRICAL OUTAGE TO BUILDING DURING CONSTRUCTION.

POWER DOWN TIME NOTES:

1. PROVIDE TEMPORARY BACK UP POWER AS REQUIRED OR/AND NEEDED DURING THE CONSTRUCTION.

UTILITY COMPANY COORDINATION NOTES:

1. ELECTRICAL CONTRACTOR SHALL COORDINATE ALL ELECTRICAL WORK WITH TECO (POWER COMPANY). CONTACT MRS. JUDY BUTTS, TECO AT 813-228-4709 FOR ALL ELECTRICAL UTILITY SERVICE WORK AND REQUIREMENTS. CONTRACTOR SHALL INCLUDE ALL FEES TO PROVIDE POWER TO THE BUILDING IN HIS BID PROPOSAL. NO EXCEPTION.

FAULT CURRENT AND SELECTIVE COORDINATION STUDIES NOTES:

1. THE ELECTRICAL CONTRACTOR SHALL SUBMIT TO ENGINEER A LETTER FROM UTILITY COMPANY FOR THE AVAILABLE FAULT CURRENT AT THE SECONDARY TERMINALS AT THE INSTALLED UTILITY TRANSFORMER WITH PANEL SUBMITTALS. IF A LETTER IS NOT PROVIDED WITH THE PANEL SUBMITTALS, THE SUBMITTALS WILL BE REJECTED WITHOUT REVIEW. NO EXCEPTION.

2. CONTRACTOR SHALL PROVIDE FAULT CURRENT AND SELECTIVE COORDINATION STUDY FOR ENTIRE ELECTRICAL SYSTEM PER NFPA 70 AND IEEE. REFER TO ELECTRICAL SPECIFICATION FOR REQUIREMENTS.

ELECTRICAL RISER NOTES:

MISCELLANEOUS NOTES:

UT1 UTILITY COMPANY PAD HANDHOLE AT THE POLE MOUNTED TRANSFORMER. SECONDARY VOLTAGE TO BE 120/208Y 3 PHASE, 4 WIRE WYE. FIELD VERIFY EXACT LOCATION. CONTACT AND COORDINATE ALL ELECTRICAL WORK WITH UTILITY COMPANY AND OWNER PRIOR TO BID AND START ANY WORK. NO EXCEPTION. REFER TO POWER COMPANY GENERAL NOTE ON THIS SHEET FOR ADDITIONAL REQUIREMENTS.

M500 3 PHASE METER AND CT CABINET PER UTILITY COMPANY SPEC.

SPD1 SURGE PROTECTIVE DEVICE TYPE 1, UL 1449, 3RD EDITION, NEMA 3R, 100KA. EXTEND 5#4 IN 1-1/2" C AS STRAIGHT AS POSSIBLE (MAX 2'-0").

SPD2 SURGE PROTECTIVE DEVICE TYPE 2, UL 1449, 3RD EDITION, NEMA 3R, 100KA, BY LEA. EXTEND 5#4 IN 1-1/2" C AS STRAIGHT AS POSSIBLE (MAX 2'-0").

DPV PROVIDE 60A, 4 POLE, NEMA 4X STAINLESS STEEL DISCONNECT SWITCH MOUNTED ADJACENT TO ELECTRIC METER FOR PHOTOVOLTAIC SYSTEM. REFER TO ELECTRICAL SHEET E2.5 FOR PHOTOVOLTAIC SYSTEM REQUIREMENTS. CONFIRM FINAL REQUIREMENTS WITH THE UTILITY COMPANY.

MDP MAIN DISTRIBUTION PANEL 3PH, 208/120V. REFER TO ELECTRICAL PANEL SCHEDULE FOR REQUIREMENTS.

P1 ELECTRICAL PANEL, 3PH, 208/120V. REFER TO ELECTRICAL PANEL SCHEDULE FOR REQUIREMENTS.

L1 PROVIDE LABEL: WARNING - ELECTRICAL SHOCK HAZARD-PANEL HAS THREE INPUT POWER SUPPLIES (UTILITY, GENERATOR AND PHOTOVOLTAIC). DISCONNECT ALL CIRCUITS BREAKERS FROM ALL POWER SOURCES BEFORE ANY WORK.

B35 PROVIDE ENCLOSED CIRCUIT BREAKER 35 AMPS, 3P, 42KAIC RATED FOR PHOTOVOLTAIC SYSTEM WITH SHUNT TRIP MECHANISM. INTERLOCK SHUNT TRIP WITH ATS CONTACT. SHUNT TRIP TO BE ACTIVATED UPON TRANSFER TO GENERATOR POWER.

GROUNDING/BOUNDING NOTES:

G1 3/0 CU GROUND ELECTRODE CONDUCTOR IN 3/4" CONDUIT.

G2 3/4" X 20' LONG COPPER CLAD GROUND. CONNECT WITH EXOTHERMIC WELD.

G3 EXTEND THE GROUND ELECTRODE SYSTEM TO A REBAR IN THE BUILDING FOUNDATION AND BUILDING STEEL. REBAR SHALL BE CONTINUOUS 20' LENGTH, #4 MINIMUM AND ENCASED IN A MINIMUM 2" OF CONCRETE PER NEC 250.52 (3).

G4 BOND THE METALLIC COLD WATER PIPE TO THE GROUND ELECTRODE SYSTEM.

G5 EXTEND A #1 GROUND ELECTRODE CONDUCTOR TO THE BUILDING TELEPHONE TERMINAL CABINET OR BOARD. PROVIDE A GROUND BAR AT THE TELEPHONE CABINET OR BOARD.

G7 EXTEND A #3/0 IN 1" CONDUIT TO BUILDING LIGHTNING PROTECTION.

G8 BOND METER TO GROUND ELECTRODE SYSTEM WITH A #1 CU GEC IN 1" CONDUIT.

G9 3/0 CU GROUND CONDUCTOR IN 1" CONDUIT.

G10 PROVIDE COPPER GROUND BUSS 20" X 4" X 1/4" THICK ERICO MODEL #G8A14420MM COMPLETE WITH INSULATOR MOUNTED BRACKET. NO HOLES. PROVIDE CONNECTORS AND BOLT HOLES AS REQUIRED. MOUNT ADJACENT TO MAIN SWITCHBOARD OR AS SHOWN ON THE ELECTRICAL DRAWINGS.

GENERATOR NOTES:

GS1 PROVIDE EMERGENCY GENERATOR LEVEL 1, GAS/LP (DUAL SOURCES) FUELED, 150KW, 3PH, 120/208V, (WYE) 60HZ, WITH OVERSIZE ALTERNATOR, 150 AMPS AND 400 AMPS AMPS UNIT MOUNTED LSI CIRCUIT BREAKERS WITH SHUNT TRIP COIL, CERTIFIED BY THE ENVIRONMENTAL PROTECTION AGENCY (EPA) WITH CRITICAL GRADE SOUND ALUMINUM ENCLOSURE, PF=0.8 BY KOHLER OR GENERAC, CAT AND ONAN EQUAL. VERIFY WITH GENERATOR MANUFACTURER FOR EXACT LAYOUT AND CLEARANCE AND SITE CONDITIONS PRIOR TO ORDERING.

GS2E 150 A, 4 POLE, NEMA 1 AUTOMATIC TRANSFER SWITCH WITH BYPASS ISOLATION, SURFACE MOUNTED, 50KA. THE TRANSFER SWITCH AND GENERATOR SHALL BE SUPPLIED AND SERVICED BY A SINGLE COMPANY. THE TRANSFER SWITCH SHALL BE PROVIDED WITH INTEGRAL SURGE PROTECTIVE DEVICE.

GS2C 400 A, 4 POLE, NEMA 1 AUTOMATIC TRANSFER SWITCH WITH BYPASS ISOLATION, SURFACE MOUNTED, 50KA. THE TRANSFER SWITCH AND GENERATOR SHALL BE SUPPLIED AND SERVICED BY A SINGLE COMPANY. THE TRANSFER SWITCH SHALL BE PROVIDED WITH INTEGRAL SURGE PROTECTIVE DEVICE.

GS3 GENERATOR START RELAY. GENERATOR START RELAY. REFER TO SPECIFICATION AND GENERATOR MANUFACTURER RECOMMENDATION AND INSTRUCTION.

GS3E EMERGENCY LIGHTING CONTROL RELAY. COORDINATE WITH GENERATOR AND LIGHTING CONTROL MANUFACTURERS. EXTEND 3/4" C TO EMERGENCY LIGHTING CONTROL PANEL.

GS4 3 #12 IN 1/2" C TO GENERATOR CONTROL PANEL.

GS5 GENERATOR EMERGENCY STOP SWITCHES (ONE IN ELECTRICAL ROOM AND ONE ADJACENT TO FACP IN NEMA 3R BOX. PROVIDE 1/4" WHITE ENGRAVED LETTERS ON RED LAMINATED PLASTIC UNDER STOP SWITCH TO READ "GENERATOR EMERGENCY STOP". SURFACE MOUNT SWITCH 4'-6".

GS6 PROVIDE GENERATOR ALARM REMOTE ANNUNCIATOR (GARA) PANEL. COORDINATE FINAL LOCATION WITH OWNER AND AHJ AND EXTEND (1)-1" C WITH WIRING PER MANUFACTURER REQUIREMENTS.

GS7 BOND NEUTRAL TO GROUND AT THE GENERATOR (SEPARATE DERIVE SYSTEM). PROVIDE COMPLETE GROUND/BOND FOR A SEPARATE DERIVE SYSTEM PER NFPA 70 - NATIONAL ELECTRIC CODE.

GS8 PROVIDE CONCRETE PAD. DIMENSIONS TO BE 12" WIDER THAN GENERATOR FOOT PRINT.

GS9 THE GENERATOR ENCLOSURE SHALL BE SOUND ATTENUATED (SOUND ATTENUATION LEVEL: 60 dBA REDUCTION AT 12'-0") (FREE FIELD) ALUMINUM CONSTRUCTION OUTDOOR WEATHER PROTECTIVE ENCLOSURE PACKAGE FOR STANDBY GENERATOR SET, LISTED AND CERTIFIED TO 150 MPH WIND, CAPACITY, MEETS ASCE 7-05, WIND RESISTANCE.

GS10 EMERGENCY SHUNT TRIP FOR MAIN CIRCUIT BREAKER OF THE PHOTOVOLTAIC SYSTEM. COORDINATE WITH GENERATOR AND PV SYSTEM INSTALLER.

GS11 GENERATOR PRE-WIRED PANEL 'G' 100 MCB, 120/208V, 1PH PROVIDED BY GENERATOR VENDOR.

G GRINER ENGINEERING, INC. Date: 05/31/2013
 1628 First Avenue North Drawn: HT
 St. Petersburg, Florida 33713 Designated: HT
 Phone: (727) 822-2335 FOR: JHG
 Fax: (727) 821-3361 Job no.: 13052
 Certificate of Authorization #3173

CONTRACT 13-C-00033; Fire Station 19 Improvements - Pre-Bid Conf. 06/18/2013

E-Mail to Register as a Plan Holder and E-Mail All Questions to; ContractAdministration@tampagov.net

Sign-In Sheet Please Print

City of Tampa, Contract Administration Department

	Name	Organization	E-Mail OR Phone
1	Jim Greiner, PE	Tampa Contract Administration Dept.	Jim.Greiner@tampagov.net
2	RAY VARGAS	KENYON & PARTNERS	RAY.VARGAS@KENYONANDPARTNERS.COM
3	JAMG MITCHELL	Henkelman Const	JAMG@HCTNC.NET
4	KERRICK WILLIAMS	KWP Construction Video	Kerrick@KWPConstructionVideo.com
5	Matt Reed	The Blue Book	mreed@mail.thebluebook.com
6	TODD HINRICHS	SILVERKING CONTRACTING	TODD@SILVERKINGCONTRACTINGINC.COM
7	Luke Voelker	ACF Standby Systems	Lvoelker@acf.com
8	James Davis	ACF Standby Systems	J.davis@actpower.com
9	Mike McCandless	Cornerstone Solutions	mikem@cornerstonesolutionsgroup.com
10	Michael R. Reeves	Reeves Plumbing	Reevesbuilding@verizon.net
11	DANIEL LODUCA	HORUS CONSTRUCTION	DANIEL.LODUCA@HORUS-CS.COM
12			
13			
14			
15			
16			
17			
18			
19			
20			
21			
22			
23			
24			
25			
26			
27			
28			
29			
30			
31			
32			
33			
34			
35			
36			