



# CITY OF TAMPA

Bob Buckhorn, Mayor

CONTRACT ADMINISTRATION DEPARTMENT

David L. Vaughn, AIA, Director

## ADDENDUM NO. 2

**DATE: April 2, 2014**

Contract 13-C-00041; Howard F. Curren AWTP Methanol Feed Pump Replacement

Bidders on the above referenced project are hereby notified that the following addendum is made to the Contract Documents. BIDS TO BE SUBMITTED SHALL CONFORM TO THIS NOTICE.

- Item 1: Replace the Drawing Sheets G-1, G-3, and C-2 with the attached revised sheets G-1, G-3, and C-2 dated 3/31/14.
- Item 2: Breaker Clarification: The existing 400A circuit breaker which currently feeds MCC-598 is not stab connected (refer to attached photo). The second (new) feeder breaker may be installed in a similar fashion to what is existing.

All other provisions of the Contract Documents and Specifications not in conflict with this Addendum shall remain in full force and effect. Questions are to be e-mailed to [ContractAdministration@tampagov.net](mailto:ContractAdministration@tampagov.net).

*Jim Greiner*

Jim Greiner, P.E., Contract Management Supervisor

PROJECT WORK SUMMARY:

THIS PROJECT ENCOMPASSES THREE DIVISIONS OF WORK THAT INCLUDES CIVIL, MECHANICAL, AND ELECTRICAL TRADES. ALL PROJECT WORK WILL BE ACCOMPLISHED TO MAINTAIN UNINTERRUPTED METHANOL FEED OPERATIONS:

CIVIL: THIS WORK GENERALLY INCLUDES INSTALLATION OF NEW 4 INCH METHANOL TRANSFER AND FEED LINES (FROM THE EXISTING METHANOL STORAGE TANK CONTROL VALVES AND STRAINER TO THE IMPROVED METHANOL PUMP STATION), DEMOLITION AND RECONSTRUCTION OF THE AFFECTED FACILITY DRIVEWAY WITH NEW CONCRETE CURBING, CONCRETE PADS, AND OTHER MISCELLANEOUS POURED STRUCTURES. THE NEW METHANOL TRANSFER AND FEED LINES WILL BE INSTALLED IN A NEW TRAFFIC BEARING PIPE TRENCH AND GRATE AND A PRECAST SUMP AND ABOVE GRADE SELF-PRIMING SUMP PUMP WITH DISCHARGE PIPING DIRECTED TO THE EFFLUENT CHANNEL. THE CIVIL WORK ALSO INCLUDES IMPROVEMENTS IN BUILDING DRAINAGE WITH THE INSTALLATION OF NEW STORM GUTTER LINES ON THE PUMP STATION STRUCTURE, TO BE DIRECTED AWAY FROM THE BUILDING.

MECHANICAL: THIS WORK INCLUDES THE REMOVAL AND SALVAGE OF FOUR (4) EXISTING METHANOL PUMPS, FLOW METERS, AND RELATED EQUIPMENT AS NOTED ON THE PLANS, DEMOLITION AND REMOVAL OF EXISTING 2 INCH BLACK IRON PIPE AND APPURTENANCES, AND REPLACEMENT WITH FOUR (4) NEW PUMPS AND VALVES, PRESSURE SWITCHES, SPECIALTY PUMP PRESSURE CONTROLS AND EQUIPMENT. THE NEW EQUIPMENT WILL RECONFIGURED AND SUPPORTED WITH RELOCATED AND IMPROVED PIPE HANGERS AND PIPE SUPPORTS, STANCHIONS AND RELATED HARDWARE FOR THE NEW PIPING, VALVES, AND EQUIPMENT. ALL EXPOSED METALS WILL REQUIRE FIELD COATING AND ADDED COATING IN THE FIELD, AS SPECIFIED IN THE PLANS.

ELECTRICAL: THIS WORK WILL INCLUDE DEMOLITION OF THE EXISTING MOTOR CONTROL CENTER (MCC), INCLUDING THE CONTROL PANEL AND ANNUNCIATOR AND REMOVAL AND SALVAGE OF THE EXISTING GAS DETECTION EQUIPMENT. A NEW DOUBLE ENDED 480V MCC, 3 PHASE PANEL BOARD AND 480-120/208V, 3 PHASE TRANSFORMER TO SERVICE 120/208 V LOADS WILL BE INSTALLED IN PLACE OF THE FORMER MCC. A NEW METHANOL SYSTEM CONTROL PANEL WITH MAPLE TOUCHSCREEN GRAPHICS DISPLAY ANNUNCIATOR WILL BE INSTALLED. A NEW NEMA 4X ENCLOSURE WILL BE INSTALLED TO ENCLOSE THE EXISTING GAS DETECTION ANNUNCIATION EQUIPMENT. AN ADDITIONAL FEEDER CIRCUIT BREAKER IN EXISTING 'MCC 59" WILL BE PROVIDED TO THE NEW MCC (MCC59B) ALONG WITH TWO NEW FEEDER CIRCUITS.

1 REVISED NOTES FOR BID CLARIFICATION

LOCAL, STATE & FEDERAL STATUTES NOTE:

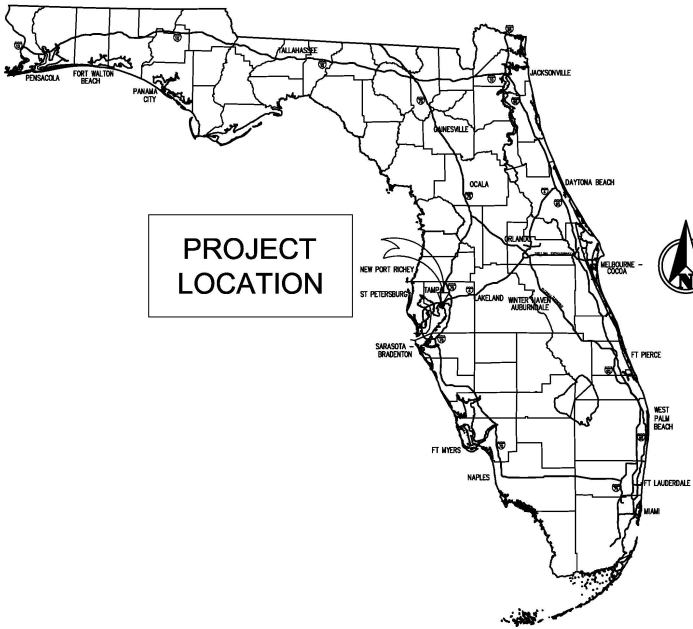
THE CONTRACTOR IS ADVISED THAT ALL CONSTRUCTION ACTIVITIES ASSOCIATED WITH THIS PROJECT SHALL COMPLY WITH LOCAL, STATE AND FEDERAL RULES AND STATUTES, WHETHER SHOWN OR IMPLIED ON THE PLANS OR CONTRACT DOCUMENTS. THE FOLLOWING RULES, LAWS AND STANDARDS APPLY.

THIS INCLUDES BUT IS NOT LIMITED TO:

- 1) OSHA PART 1926 CFR 29, SAFETY & HEALTH REGULATIONS FOR CONSTRUCTION, US CLEAN WATER ACT (CWA) SECTION 402(p)(6) NATIONAL POLLUTANT DISCHARGE ELIMINATION SYSTEM (NPDES), NATIONAL FIRE PROTECTION ASSOCIATION (NFPA) FIRE PREVENTION CODE HANDBOOK, RECOMMENDED STANDARDS FOR WASTEWATER FACILITIES (A.K.A. 10 STATE STANDARDS).
- 2) FLORIDA STATUTES CHAPTER 553 PART III- TRENCH SAFETY ACT.
- 3) FLORIDA STATUTES CHAPTER 553, PART IV-FLORIDA BUILDING CODE.
- 4) FLORIDA ADMINISTRATIVE CODE CHAPTER 62-604.
- 5) FLORIDA STATUTES CHAPTER 40D RULES OF THE SOUTHWEST FLORIDA WATER MANAGEMENT DISTRICT.
- 6) HILLSBOROUGH COUNTY ENVIRONMENTAL PROTECTION COMMISSION (HCEPC) ENABLING ACT AND RULES.
- 7) IT IS THE INTENT OF THESE PLANS TO COMPLY WITH LOCAL, STATE, AND FEDERAL STATUTES. ANY DESIGN INFORMATION WHETHER SHOWN OR NOT SHOWN ON THE PLANS DOES NOT RELIEVE THE CONTRACTOR OF HIS RESPONSIBILITIES TO COMPLY WITH ALL CODES, STATUTES AND RULES. THE CONTRACTOR SHALL INFORM THE ENGINEER IF THERE IS ANY QUESTION ABOUT THE INTENT OF THE PLANS AND THE REQUIREMENTS OF CODES, RULES, AND STATUTES.

HOWARD F. CURREN AWWTP  
METHANOL FEED  
PUMP REPLACEMENT  
CONTRACT NO. 13-C-00041

REGIONAL MAP



VICINITY MAP



SECTION 30 RANGE 29 TOWNSHIP 19



777 S. HARBOUR ISLAND BLVD., SUITE 870, TAMPA, FL 33602  
TEL (813) 227-9190 FAX (813) 227-9195  
COMPANY CERTIFICATE OF AUTHORIZATION 8363

INDEX OF DRAWINGS

TITLE	SHEET NO.
<b>GENERAL</b>	
COVER SHEET	G-1
GENERAL NOTES AND LEGENDS	G-2
METHANOL FEED SCHEMATICS AND EQUIPMENT SCHEDULE	G-3
<b>CIVIL</b>	
DEMOLITION AND TEMPORARY SERVICE PLAN	C-1
CIVIL SITE IMPROVEMENTS	C-2
CIVIL SITE IMPROVEMENTS	C-3
<b>MECHANICAL</b>	
METHANOL PIPING LAYOUT	M-1
MECHANICAL PIPING LAYOUT	M-2
PUMP SYSTEM DETAILS	M-3
<b>ELECTRICAL</b>	
ELECTRICAL LEGEND	E-1
ELECTRICAL NOTES AND OVERALL SITE PLAN	E-2
ELECTRICAL SITE PLAN	E-3
CHEP ELECTRICAL DEMOLITION PLAN	E-4
CHEP ELECTRICAL PLAN	E-5
METHANOL STORAGE TANK SITE PLAN	E-6
CHEP AREA CLASSIFICATION PLAN	E-7
MOTOR CONTROL CENTERS ELEVATIONS AND DETAILS	E-8
NEW MCC-59B ELEVATION AND ONE-LINE DIAGRAM	E-9
ELECTRICAL DETAILS	E-10
ELECTRICAL DETAILS	E-11
MOTOR SCHEMATIC WIRING DIAGRAMS	E-12
CONDUIT AND CABLE SCHEDULE	E-13
CONDUIT AND CABLE SCHEDULE	E-14
CONDUIT AND CABLE SCHEDULE	E-15
<b>INSTRUMENTATION</b>	
INSTRUMENTATION AND CONTROLS LEGEND	I-1
MPCP DETAILS	I-2
MPCP WIRING DIAGRAM	I-3
MPCP DISCRETE I/O WIRING DIAGRAMS	I-4
MPCP ANALOG INPUTS	I-5
MPCP 4-20mA LOOP SCHEMATICS	I-6
MPCP COMMUNICATION RISER DIAGRAMS	I-7

PREPARED FOR  
CITY OF TAMPA WASTEWATER DEPARTMENT  
306 E. JACKSON STREET - 6E  
TAMPA, FL 33602

ISSUED TO: CITY OF TAMPA  
DATE ISSUED: MARCH 31, 2014  
ADDENDUM 2 BID CLARIFICATION

DESIGNED BY:	HAM	DRAWN BY:	HAM	DATE:	FEBRUARY 24, 2014	S	T	R
CHECKED BY:	MJF	APPROVED BY:	MJF	JOB NO:	1013005	30	29S	19E
						FOLIO #		
							199340.0000	

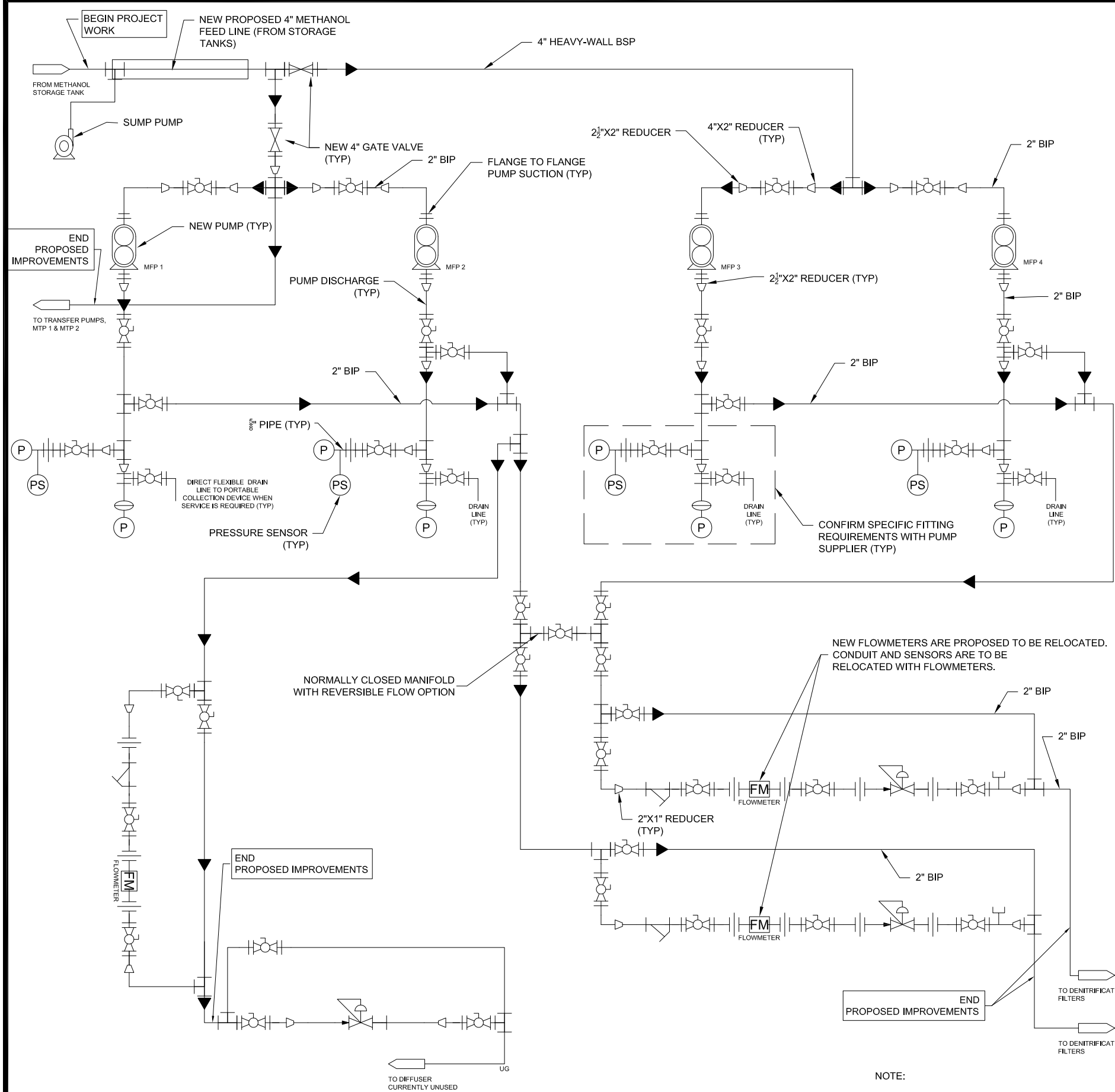
THESE PLANS MAY NOT BE COPIED OR MODIFIED WITHOUT WRITTEN PERMISSION FROM WATERMARK ENGINEERING GROUP, INC.  
NOT VALID UNLESS SIGNED & EMBOSSED BY A REGISTERED ENGINEER

MARK FLINT, P.E. #38827 ENGINEER OF RECORD

THESE PLANS MAY NOT BE COPIED OR MODIFIED WITHOUT WRITTEN PERMISSION FROM TRICON CONSULTING ENGINEERS  
NOT VALID UNLESS SIGNED & EMBOSSED BY A REGISTERED ENGINEER

TIMOTHY THOMAS, P.E. #47079 ELECTRICAL ENGINEER

G-1



1 SCHEMATIC CLARIFICATION

### PROPOSED METHANOL FEED PIPING SCHEMATIC NTS

NOTE:

BIP BLACK IRON PIPE  
BSP BLACK STEEL PIPE

ALL PIPING AND FITTINGS SHALL BE FLANGED.

SEE SHEET G-2 FOR SCHEMATIC LEGEND.

### MECHANICAL PIPING NOTES: 1 REVISED NOTES FOR BID CLARIFICATION

1. SCHEMATIC PLANS SHOW NEW MECHANICAL PIPING DIAGRAM TO PROVIDE FUNCTIONAL SYSTEM INFORMATION ONLY. SEE MECHANICAL PLANS FOR THE LOCATION OF SYSTEM COMPONENTS.
2. ALL METHANOL PIPING LESS THAN 3 INCHES IN DIAMETER SHALL BE FLANGED JOINT 3000 PSI BLACK IRON PIPE. ALL FLANGED JOINT BLACK IRON PIPE SHALL BE FIELD MEASURED, CUT, AND WELDED ON SITE. NO WELDING SHALL BE ALLOWED WITHIN 50 FT OF METHANOL STORAGE TANKS, METHANOL LINES, OR METHANOL PUMPS.
3. ALL PROPOSED METHANOL PIPING OF 3 INCHES OR GREATER IN DIAMETER SHALL BE HEAVY-WALL BLACK STEEL PIPE. ALL BELOW GRADE STEEL PIPE SHALL BE PRIMED AND COATED AND POLYWRAPPED.
4. NEW PROPOSED PIPING IN THE CHEMICAL FEED BUILDING SHALL BE INSTALLED WITH FIELD ADJUSTMENTS TO ADD OVERHEAD SUPPORT WITH STAINLESS STEEL PIPE HANGERS AND ADJUSTABLE THREADED ROD PIPE HANGERS. THE MAXIMUM ROD SPACING SHALL BE 3 FEET.
5. ALL SUPPORTS SHALL PROVIDE METHODS TO REMOVE PIPING COUPLINGS OR FITTINGS WITHOUT CREATING BENDING STRESS FROM UNSUPPORTED PIPE.
6. ALL PIPING, FASTENERS, AND OTHER METAL APPURTENANCES SHALL BE OF SIMILAR METALS, OR INSULATED TO PREVENT DISSIMILAR METAL CONTACT.
7. ALL VALVES LESS THAN 4 INCHES IN DIAMETER SHALL BE BALL VALVES AND CONSTRUCTED OF 316 STAINLESS STEEL.
8. ALL METHANOL SUCTION AND DISCHARGE PIPING WITHIN THE PUMP PADS LESS THAN 4" IN DIAMETER SHALL BE SUPPORTED FROM ABOVE BY UNI-FLANGE PIPE HANGERS AND ADJUSTABLE THREADED RODS.
9. ALL METHANOL PIPING SHALL BE PRIMED AND PAINTED (COLOR ORANGE) PRIOR TO ASSEMBLY, AND FOLLOWED WITH A FINAL COAT AROUND ALL VALVES AND FITTINGS-NO EXPOSURE OF BARE PIPE OR PIPE CONNECTIONS SHALL BE ALLOWED.
10. PRECISE LENGTHS AND INSTALLATION DETAILS OF METHANOL PIPING SHALL BE FIELD DETERMINED AND FABRICATED IN THE FIELD.
11. THE CONTRACTOR SHALL PROVIDE ALL SPECIALIZED FITTINGS OR APPURTENANCES THAT MAY BE REQUIRED BY THE METHANOL PUMP SUPPLIER IN ORDER TO ACCOMMODATE INSTALLATION AND PROPER OPERATION OF THE PUMP EQUIPMENT.
12. ALL METHANOL PIPE FITTINGS, AND VALVES SHALL UTILIZE TEFLON GASKETS AND/OR VALVE SEATS THAT ARE METHANOL RESISTANT.
13. ALL METHANOL PIPING SHALL BE WELDED FLANGED PIPE. NO THREADED FLANGED PIPING SHALL BE ALLOWED.

REVISIONS		NO.	DATE	BY	DESCRIPTION
1	03/27/2014	1	14M	14M	REVISIONS
2	03/27/2014	2	14M	14M	REVISIONS
3	03/27/2014	3	14M	14M	REVISIONS
4	03/27/2014	4	14M	14M	REVISIONS
5	03/27/2014	5	14M	14M	REVISIONS
6	03/27/2014	6	14M	14M	REVISIONS
7	03/27/2014	7	14M	14M	REVISIONS
8	03/27/2014	8	14M	14M	REVISIONS
9	03/27/2014	9	14M	14M	REVISIONS
10	03/27/2014	10	14M	14M	REVISIONS
11	03/27/2014	11	14M	14M	REVISIONS
12	03/27/2014	12	14M	14M	REVISIONS
13	03/27/2014	13	14M	14M	REVISIONS
14	03/27/2014	14	14M	14M	REVISIONS
15	03/27/2014	15	14M	14M	REVISIONS
16	03/27/2014	16	14M	14M	REVISIONS
17	03/27/2014	17	14M	14M	REVISIONS
18	03/27/2014	18	14M	14M	REVISIONS
19	03/27/2014	19	14M	14M	REVISIONS
20	03/27/2014	20	14M	14M	REVISIONS
21	03/27/2014	21	14M	14M	REVISIONS
22	03/27/2014	22	14M	14M	REVISIONS
23	03/27/2014	23	14M	14M	REVISIONS
24	03/27/2014	24	14M	14M	REVISIONS
25	03/27/2014	25	14M	14M	REVISIONS
26	03/27/2014	26	14M	14M	REVISIONS
27	03/27/2014	27	14M	14M	REVISIONS
28	03/27/2014	28	14M	14M	REVISIONS
29	03/27/2014	29	14M	14M	REVISIONS
30	03/27/2014	30	14M	14M	REVISIONS
31	03/27/2014	31	14M	14M	REVISIONS
32	03/27/2014	32	14M	14M	REVISIONS
33	03/27/2014	33	14M	14M	REVISIONS
34	03/27/2014	34	14M	14M	REVISIONS
35	03/27/2014	35	14M	14M	REVISIONS
36	03/27/2014	36	14M	14M	REVISIONS
37	03/27/2014	37	14M	14M	REVISIONS
38	03/27/2014	38	14M	14M	REVISIONS
39	03/27/2014	39	14M	14M	REVISIONS
40	03/27/2014	40	14M	14M	REVISIONS
41	03/27/2014	41	14M	14M	REVISIONS
42	03/27/2014	42	14M	14M	REVISIONS
43	03/27/2014	43	14M	14M	REVISIONS
44	03/27/2014	44	14M	14M	REVISIONS
45	03/27/2014	45	14M	14M	REVISIONS
46	03/27/2014	46	14M	14M	REVISIONS
47	03/27/2014	47	14M	14M	REVISIONS
48	03/27/2014	48	14M	14M	REVISIONS
49	03/27/2014	49	14M	14M	REVISIONS
50	03/27/2014	50	14M	14M	REVISIONS
51	03/27/2014	51	14M	14M	REVISIONS
52	03/27/2014	52	14M	14M	REVISIONS
53	03/27/2014	53	14M	14M	REVISIONS
54	03/27/2014	54	14M	14M	REVISIONS
55	03/27/2014	55	14M	14M	REVISIONS
56	03/27/2014	56	14M	14M	REVISIONS
57	03/27/2014	57	14M	14M	REVISIONS
58	03/27/2014	58	14M	14M	REVISIONS
59	03/27/2014	59	14M	14M	REVISIONS
60	03/27/2014	60	14M	14M	REVISIONS
61	03/27/2014	61	14M	14M	REVISIONS
62	03/27/2014	62	14M	14M	REVISIONS
63	03/27/2014	63	14M	14M	REVISIONS
64	03/27/2014	64	14M	14M	REVISIONS
65	03/27/2014	65	14M	14M	REVISIONS
66	03/27/2014	66	14M	14M	REVISIONS
67	03/27/2014	67	14M	14M	REVISIONS
68	03/27/2014	68	14M	14M	REVISIONS
69	03/27/2014	69	14M	14M	REVISIONS
70	03/27/2014	70	14M	14M	REVISIONS
71	03/27/2014	71	14M	14M	REVISIONS
72	03/27/2014	72	14M	14M	REVISIONS
73	03/27/2014	73	14M	14M	REVISIONS
74	03/27/2014	74	14M	14M	REVISIONS
75	03/27/2014	75	14M	14M	REVISIONS
76	03/27/2014	76	14M	14M	REVISIONS
77	03/27/2014	77	14M	14M	REVISIONS
78	03/27/2014	78	14M	14M	REVISIONS
79	03/27/2014	79	14M	14M	REVISIONS
80	03/27/2014	80	14M	14M	REVISIONS
81	03/27/2014	81	14M	14M	REVISIONS
82	03/27/2014	82	14M	14M	REVISIONS
83	03/27/2014	83	14M	14M	REVISIONS
84	03/27/2014	84	14M	14M	REVISIONS
85	03/27/2014	85	14M	14M	REVISIONS
86	03/27/2014	86	14M	14M	REVISIONS
87	03/27/2014	87	14M	14M	REVISIONS
88	03/27/2014	88	14M	14M	REVISIONS
89	03/27/2014	89	14M	14M	REVISIONS
90	03/27/2014	90	14M	14M	REVISIONS
91	03/27/2014	91	14M	14M	REVISIONS
92	03/27/2014	92	14M	14M	REVISIONS
93	03/27/2014	93	14M	14M	REVISIONS
94	03/27/2014	94	14M	14M	REVISIONS
95	03/27/2014	95	14M	14M	REVISIONS
96	03/27/2014	96	14M	14M	REVISIONS
97	03/27/2014	97	14M	14M	REVISIONS
98	03/27/2014	98	14M	14M	REVISIONS
99	03/27/2014	99	14M	14M	REVISIONS
100	03/27/2014	100	14M	14M	REVISIONS

THESE PLANS MAY NOT BE COPIED OR MODIFIED WITHOUT WRITTEN PERMISSION FROM WATERMARK ENGINEERING GROUP, INC.

UNLESS SIGNED & EMBOSSED BY A REGISTERED ENGINEER

---

MARK J FUNT, P.E. #36827 ENGINEER OF RECORD







FUSEMATIC  
CIRCUIT BREAKER

FUSE COMPARTMENT  
LOADS REVERSE POWER PROTECT