



CITY OF TAMPA

Bob Buckhorn, Mayor

CONTRACT ADMINISTRATION DEPARTMENT

Michael W. Chucran, Director

ADDENDUM NO. 4

DATE: April 20, 2017

Contract 16-C-00011; Solid Waste Department Building 4 Interior Improvements

Bidders on the above referenced project are hereby notified that the following addendum is made to the Contract Documents. BIDS TO BE SUBMITTED SHALL CONFORM TO THIS NOTICE.

- Item 1: Replace plan sheet A7.1 with the attached plan sheet A7.1.
- Item 2: Plan sheet A8.1, Door Schedule, Door 105: change Door Frame Type "3" to be Type "2".
- Item 3: Specification Section 08410 – Aluminum Entrances and Storefronts, Part 1 General, under System Description: Delete Thermally Broken Construction in its entirety.

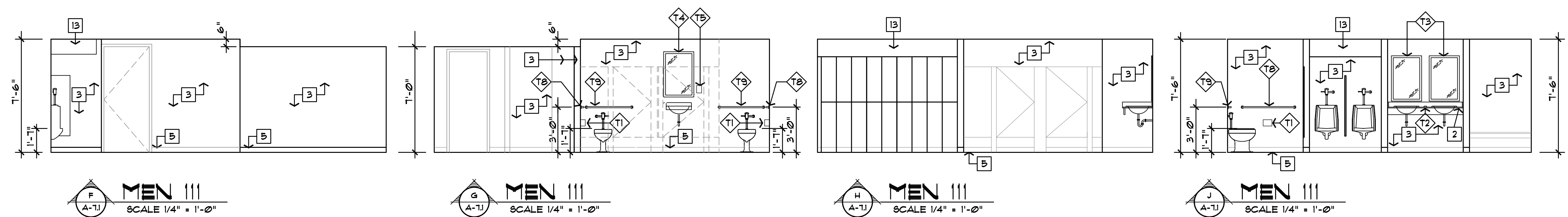
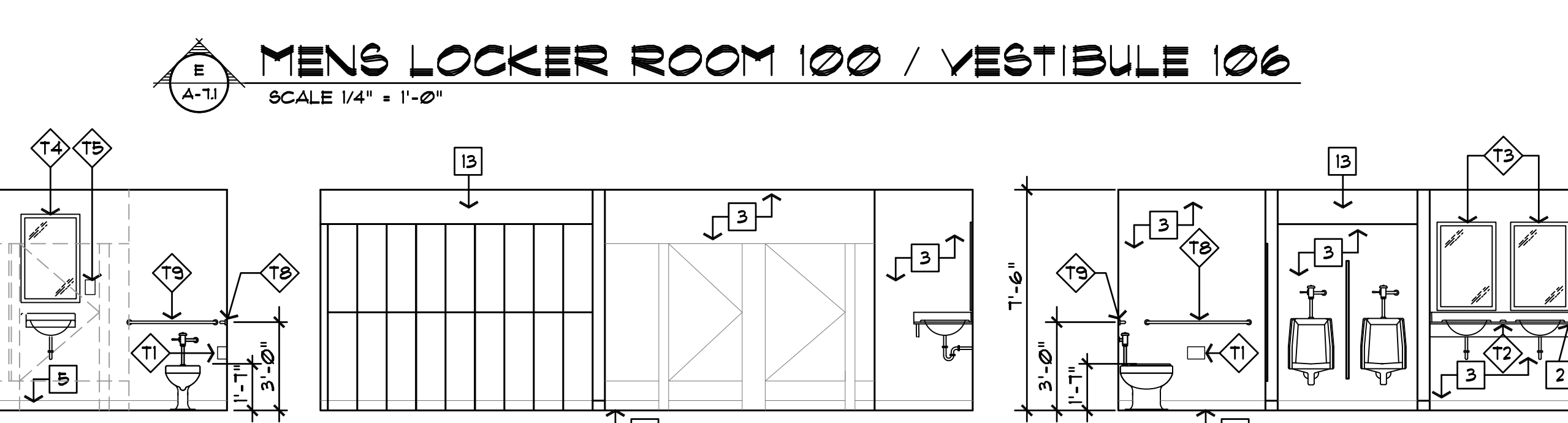
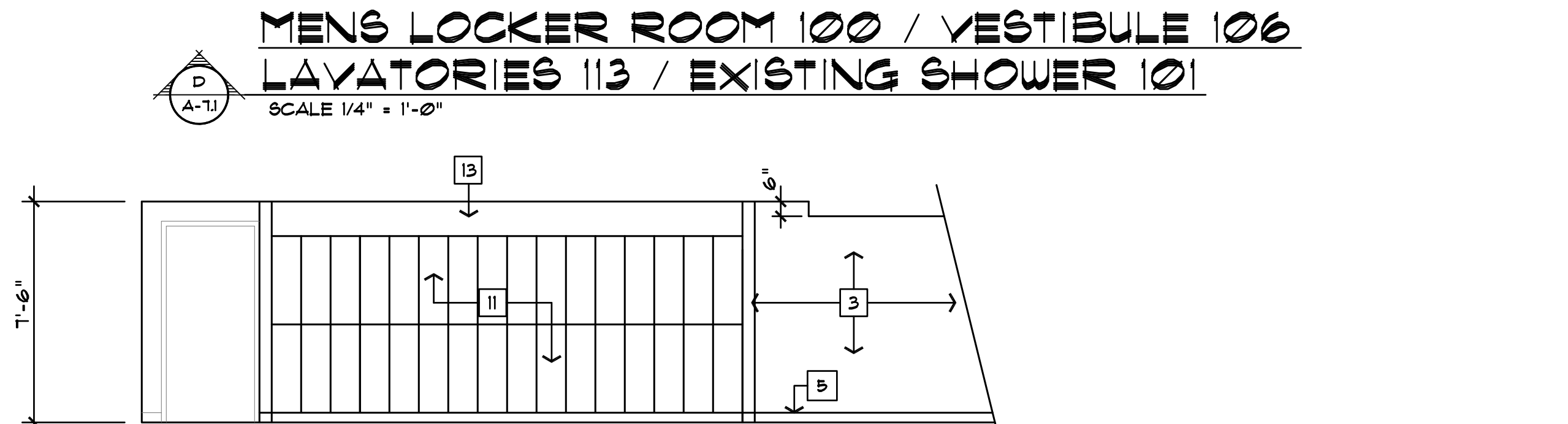
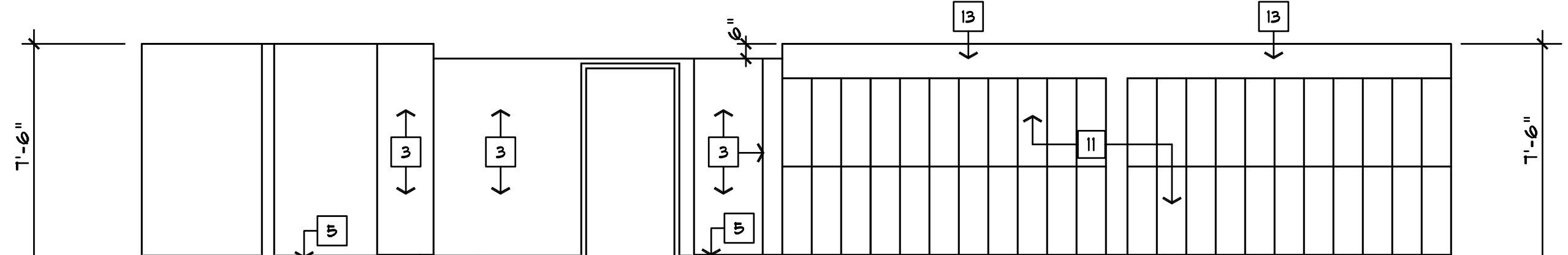
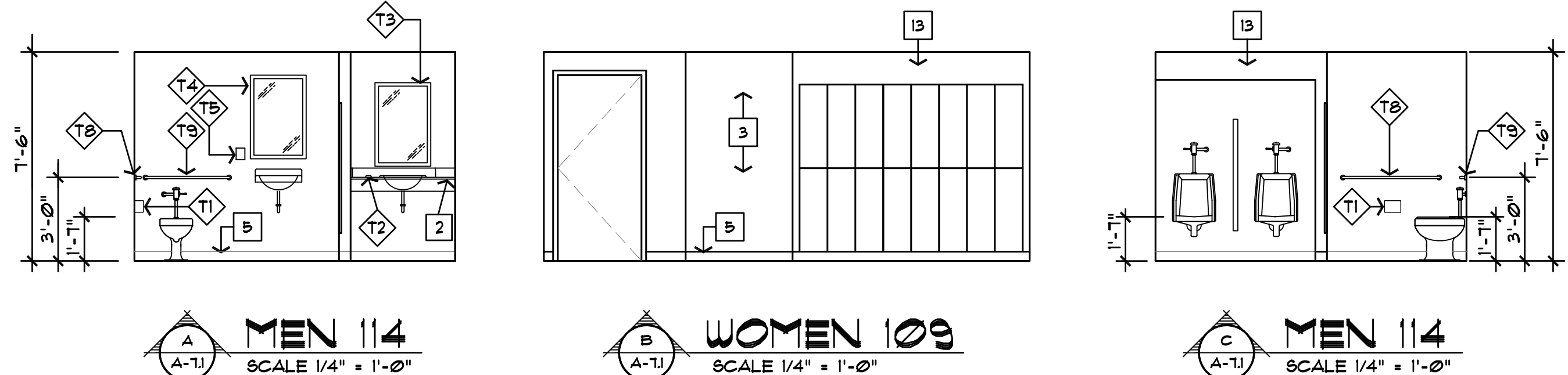
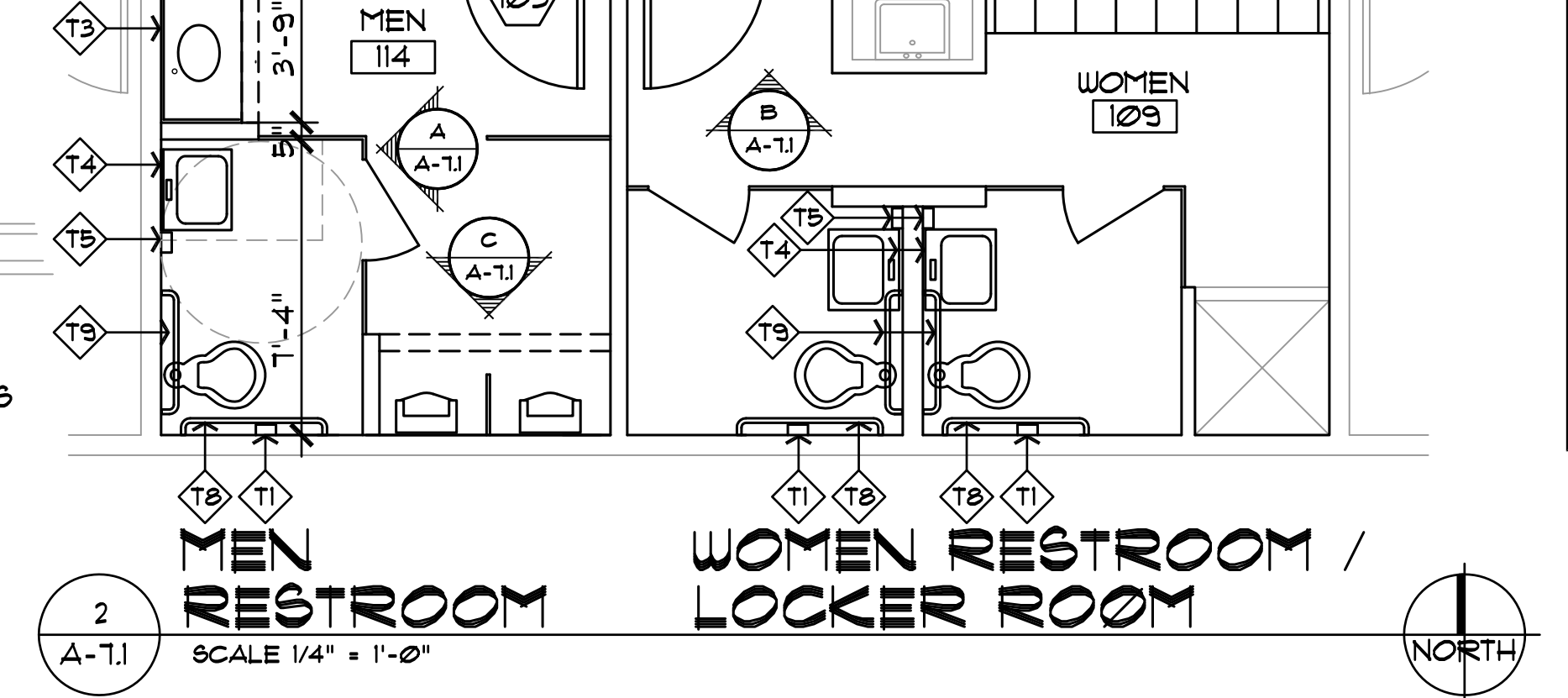
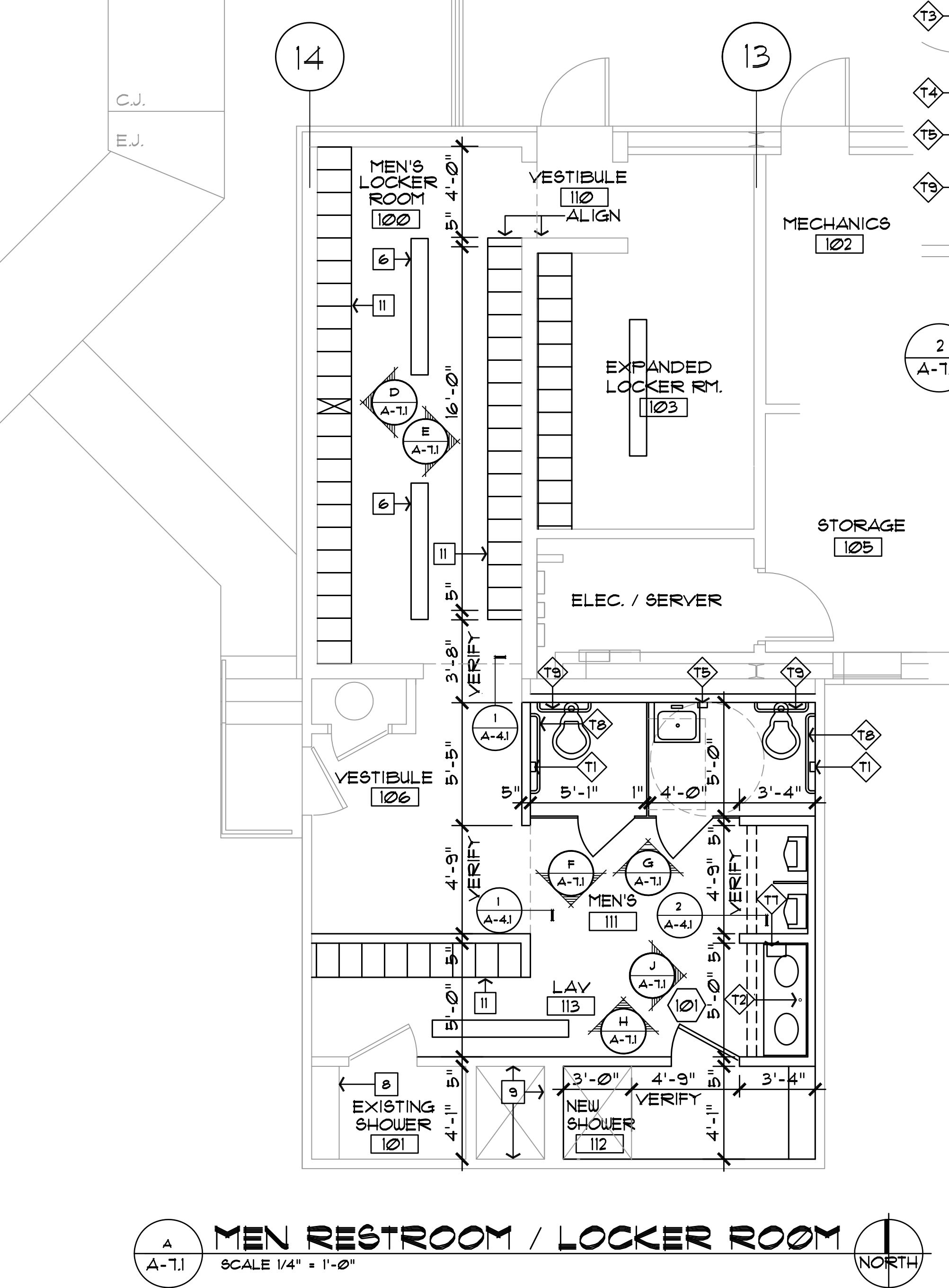
All other provisions of the Contract Documents and Specifications not in conflict with this Addendum shall remain in full force and effect. Questions are to be e-mailed to ContractAdministration@tampagov.net.

Jim Greiner

Jim Greiner, P.E., Contract Management Supervisor

K:\A\Planning & Design Division\Library\Thomas Hester\Solid Waste Bldg. 4 IMPROVEMENTS\SOLID WASTE BLDG. 4 IMPROVEMENTS construction documents\A-71 ENLARGED RESTROOM PLANS 4.12.17.dwg, 4/20/2017 11:18:17 AM, Adobe PDF

C.J.
E.J.




- ### TOILET ACCESSORIES
- T1 DOUBLE ROLL SURFACE MOUNTED TOILET TISSUE DISPENSER SIMILAR TO BRADLEY #5234.
 - T2 SOAP DISPENSER SIMILAR TO BRADLEY #6324.
 - T3 2' x 3' CHANNEL FRAMED MIRROR SIMILAR TO BRADLEY #181.
 - T4 2' x 3' FIXED TILT FRAMED MIRROR SIMILAR TO BRADLEY #140.
 - T5 SURFACE MOUNTED SOAP DISPENSER SIMILAR TO BRADLEY #6542.
 - T6 4' x 3' CHANNEL FRAMED MIRROR SIMILAR TO BRADLEY #181.
 - T7 SURFACE MOUNTED HAND DRYER SIMILAR TO BRADLEY #2801-28 COLOR AS SELECTED FROM MANUFACTURE'S COLOR STANDARD.
 - T8 GRAB BARS - SIMILAR TO BRADLEY 800-001 SERIES WITH 42" BAR AT SIDE OF WATER CLOSET.
 - T9 GRAB BAR SIMILAR TO BRADLEY 800-001 SERIES 36" IN LENGTH.

GENERAL NOTES

1. REPAIR ALL EXISTING FINISHES DAMAGED SELECTIVE DEMOLITION WORK AND AFFECTED BY NEW RENOVATION WORK.

- ### KEY NOTES
- 1 4" x 3/4" SOLID SURFACE BACKSPLASH.
 - 2 3/4" SOLID SURFACE COUNTERTOP.
 - 3 4 x 4 CERAMIC WALL TILE, FLOOR TO CEILING
 - 4 TOILET PARTITIONS DASHED FOR CLARITY
 - 5 CERAMIC TILE BASE
 - 6 1-1/4" THICK x 9" WIDE x 12" LONG WOOD BENCH SIMILAR TO ULINE MODEL H-3010. WWW.ULINE.COM
 - 7 2' x 3' FIXED TILT FRAMED MIRROR SIMILAR TO BRADLEY #140.
 - 8 EXISTING BENCH SEAT TO REMAIN
 - 9 EXISTING TILE TO REMAIN
 - 10 1-1/4" THICK x 9" WIDE x 48" LONG WOOD BENCH SIMILAR TO ULINE MODEL H-3009. WWW.ULINE.COM
 - 11 12" WIDE x 18" DEEP x 12" HIGH DOUBLE TIER STEEL LOCKERS SIMILAR TO ULINE MODEL H-1224. WWW.ULINE.COM
 - 12 EXISTING CORNER WALL TO REMAIN
 - 13 4 x 4 CERAMIC WALL TILE



CITY OF TAMPA
CONTRACT ADMINISTRATION
DEPARTMENT
PLANNING AND DESIGN DIVISION
305 E. JACKSON STREET 4 NORTH
TAMPA, FLORIDA 33602
P. 813. 274. 8456 - F. 813. 274. 8080
URL: www.tampagov.net

James E. Jackson, Jr. AIA, NOMA
City Architect
Edward D. Rice, AIA
Project Architect
Kevin L. Henika, AIA
Project Architect
Thomas A. Hester, Sr., AIA, NOMA
Project Architect
Kinsey C. Tillman
Drafting Technician
Jerry P. Sanders
Drafting Technician
Byron K. Thomas, LEED GA
Drafting Technician

MEP CONSULTANT
GLOBAL SANCHEZ, INC.
BUILDING SYSTEMS ENGINEERING
3925 HENDERSON BLVD. SUITE 103
TAMPA, FL 33629
PHONE (813) 281-0001

STRUCTURAL CONSULTANT

CIVIL CONSULTANT

LANDSCAPE CONSULTANT

**SOLID WASTE BUILDING 4
INTERIOR REMODEL**
4010 W. SPRUCE ST.
TAMPA, FLORIDA

FILE NUMBER
X

PROJECT NUMBER
16-C-11

ISSUE DATE
MARCH 2017

DRAWN BY
KINSEY TILLMAN

REVISIONS

△	
△	
△	

PROFESSIONAL SEAL
THOMAS HESTER, AIA, NOMA

X

SCALE: 1/8"=1'-0"

ENLARGED FLOOR PLANS

SHEET NUMBER
A 7.1

X OF X