

Drew Park

Community Redevelopment Area

Streetscape and Beautification Master Plan



Community Workshop No. 3 Presentation

September 20, 2011

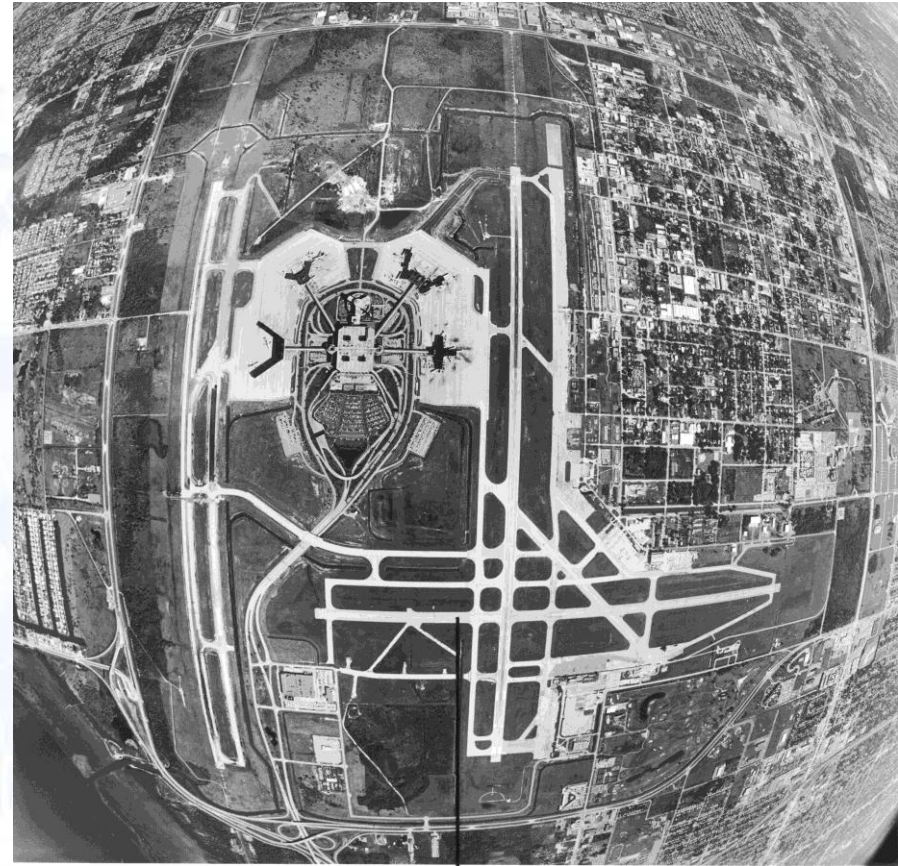
Project Goals

1. Improve the character and quality of the public areas throughout Drew Park
2. Tell the unique story of Drew Park's history and diversity
3. Begin to establish a new positive image of the Drew Park Community Redevelopment Area



Project Initiatives

1. Establish a Long Range Plan – Master Plan
2. Identify improvements that can be completed now.
3. Define standards for currently funded projects as well as future capital improvements projects.

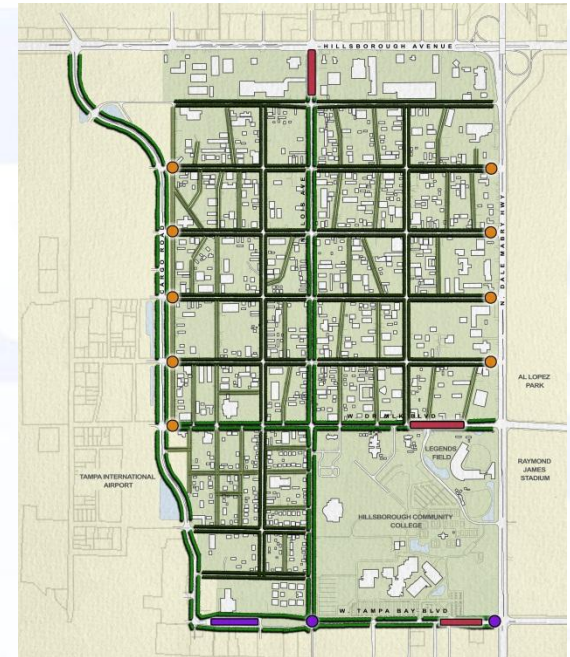


Public Involvement Process

- **Today is Third and Final Public Workshop**
 - Data Collection Workshop No. 1 – April 19, 2011
 - Conceptual Design Workshop No. 2 – June 28, 2011
- **CRA Presentation – July 19**
- **Drew Park Community Advisory Committee Presentations**

Master Plan Recommendations

1. Improve Community Entry & Identity
2. Create a Walk-able Community
3. Enable Greater Bicycle Access to and throughout the CRA
4. Provide opportunities for exercise and recreation
5. Encourage Sustainable Design Solutions
6. Introduce Public Art
7. Tell Drew Park's History



Community Entry & Identity

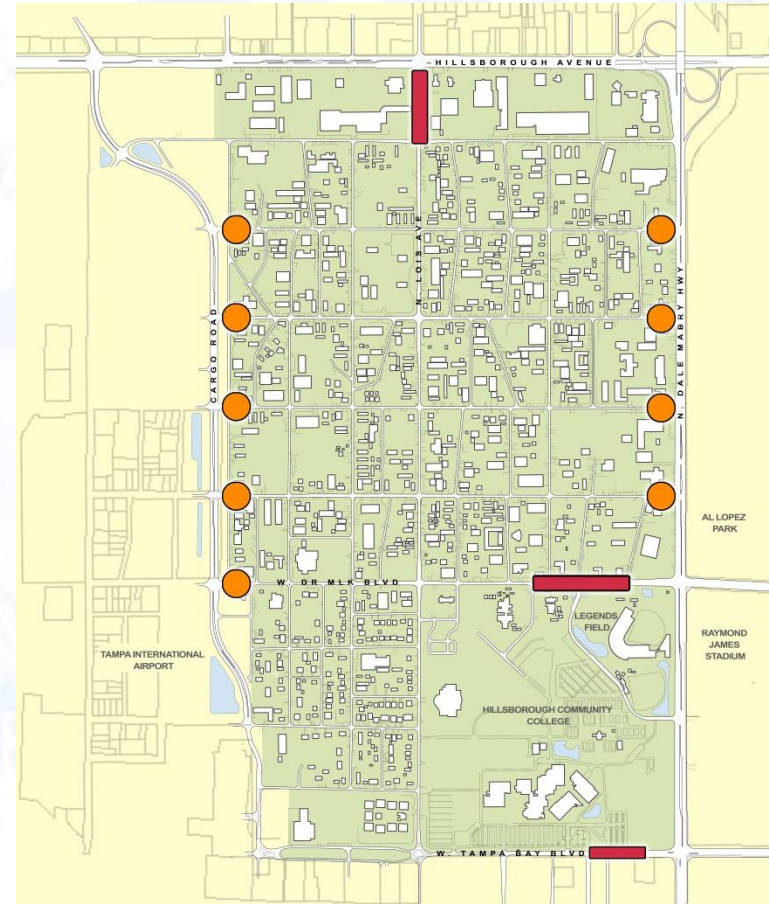
1. Provide community identity monuments along Dale Mabry at:

1. West South Ave.
2. West Osborne Avenue
3. West Cayuga Street
4. West Alva Street

2. Develop Arrival “Gateways”

1. Hillsborough Avenue & Lois Avenue
2. MLK and Dale Mabry
3. Tampa Bay Boulevard and Dale Mabry

3. Air Cargo Road in Future



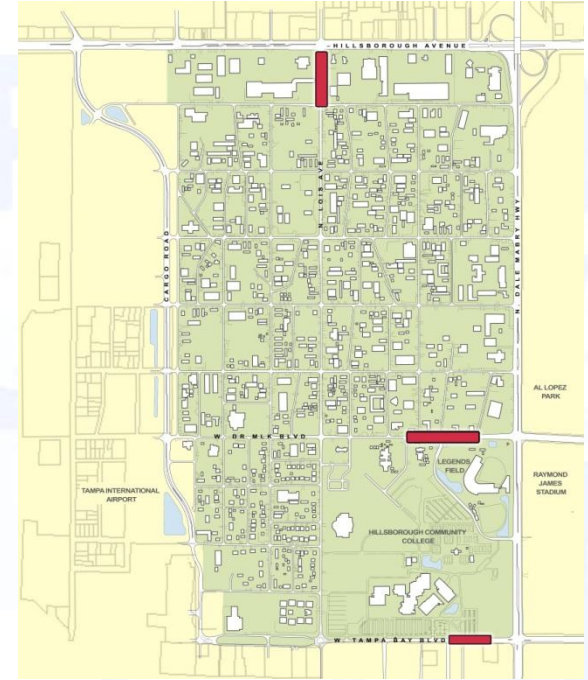
Community Identity Monuments

- 8' Tall Monuments at Right of Way
- Simple / Industrial Art Design
- Use Durable Materials
 - Concrete, Steel, Aluminum, Glass
- Allow for future Art Enhancement



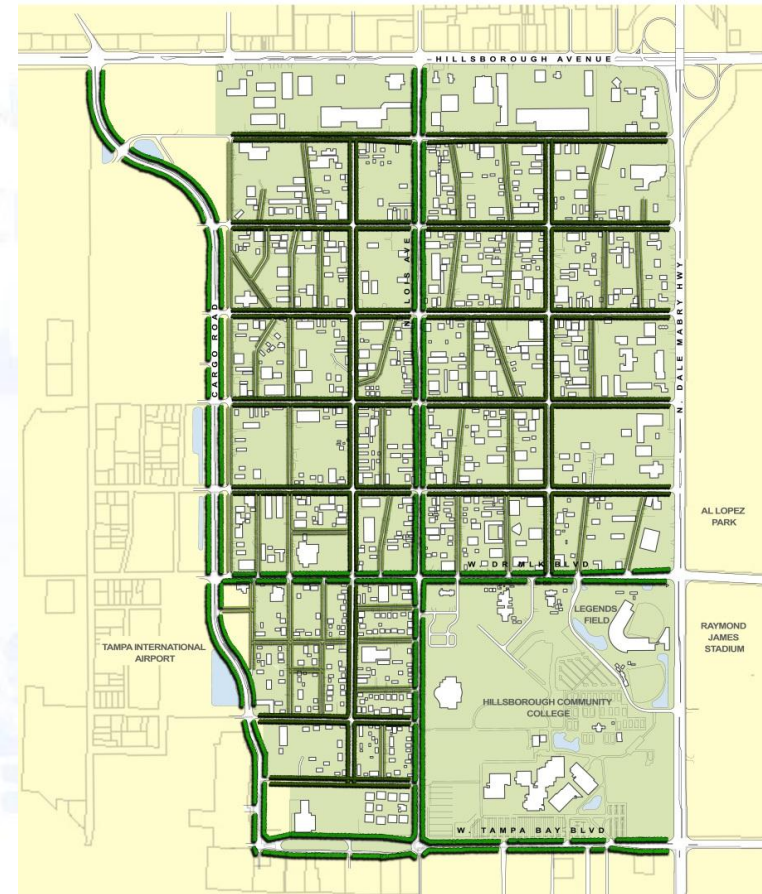
Entry and Arrival Gateways

- Limited available right of way
- Frame Street with 12-15' Tall Monuments
- Simple / Industrial Art Design
- Use Durable Materials
 - Concrete, Steel, Aluminum, Glass
- Allow for future Art Enhancement



Create a Walk-able Community

- Continuous connected sidewalks
- Raised curbing to separate pedestrians and vehicles
- Improved high visibility pedestrian crosswalks
- Street trees with occasional shade structures
- Improve Street and Pedestrian lighting
- Provide occasional seating areas and waste receptacles

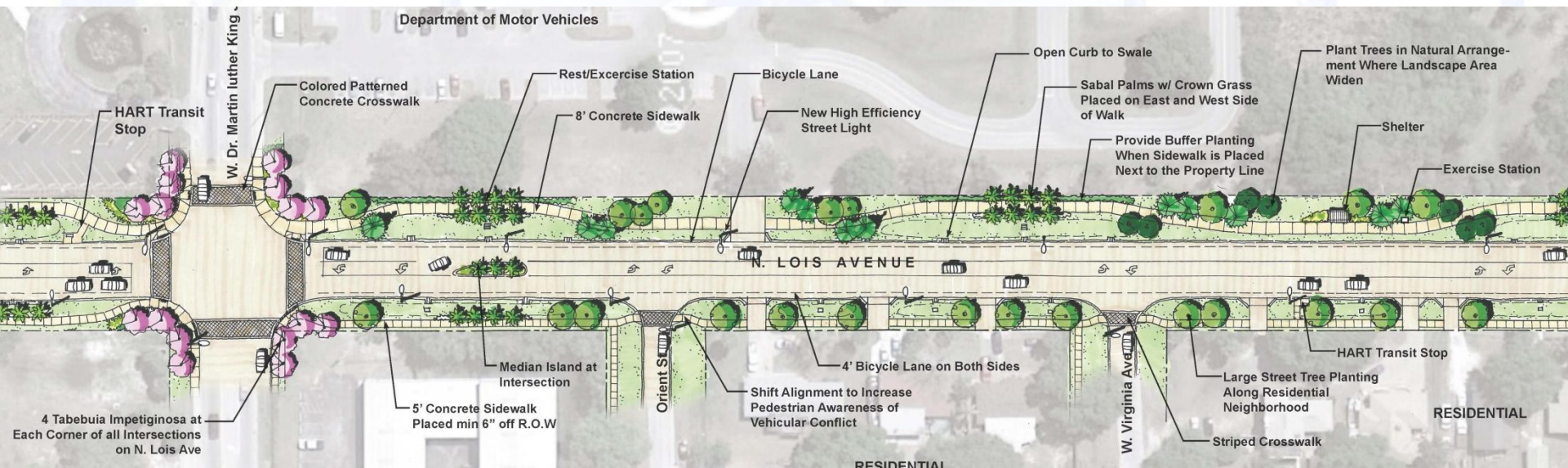


Lois Avenue

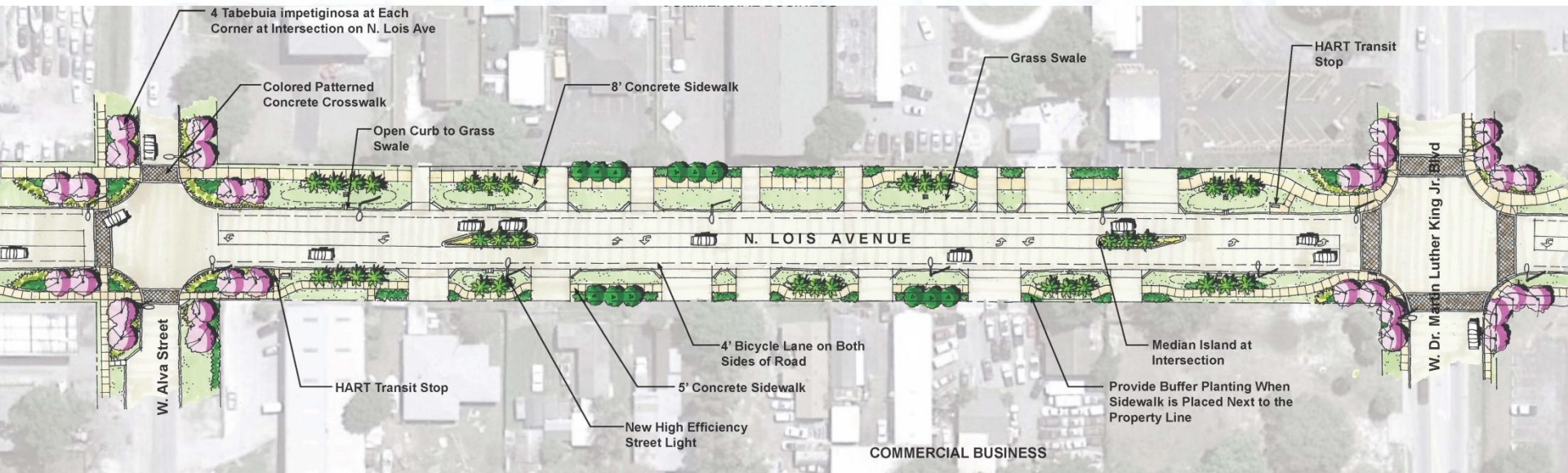
- Wide Sidewalks (8' East Side, 5' West Side)
- High Visibility Decorative Crosswalks
- New Lighting
- Attractive Tree and Shrub Planting
- New Underground Drainage System
- New Bus Stops with Attractive Benches
- Seating / Rest Areas
- Bicycle Lanes
- Medians at Signalized Intersections



Lois Avenue – MLK South Concept



Lois Avenue – MLK North Concept

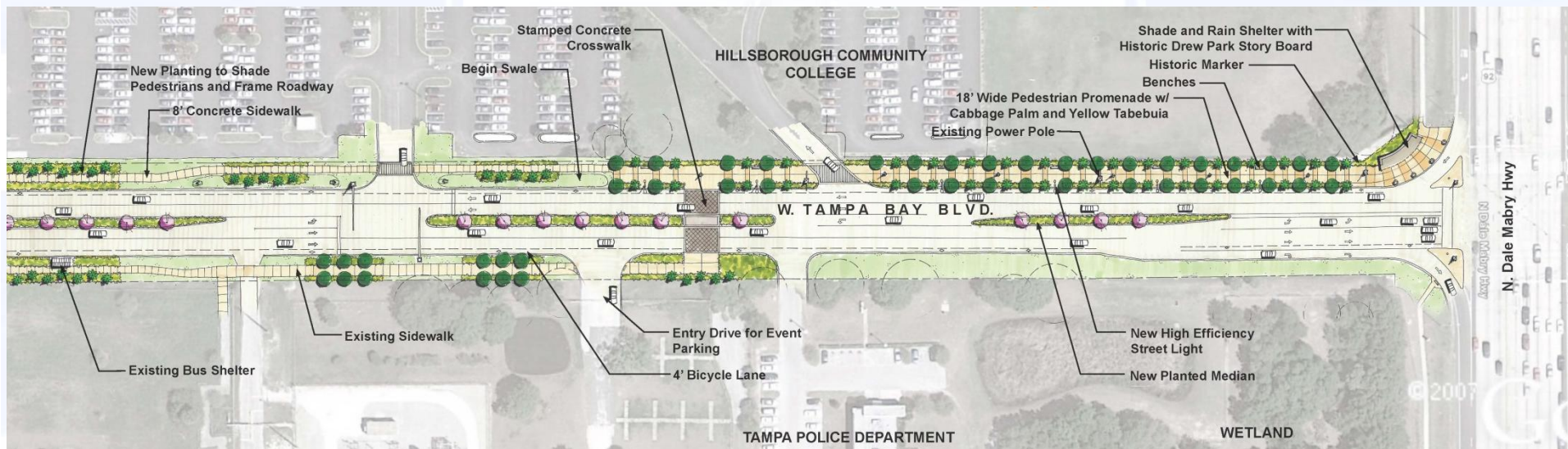


Tampa Bay Boulevard

- Convert to divided boulevard as extension of Air Cargo road to Dale Mabry
- Includes passive neighborhood park within median
- Pedestrian Promenade to Raymond James Stadium
- General Improvements include
 - Sidewalk connecting Dale Mabry with Air Cargo Road
 - High Visibility Decorative Crosswalks
 - New Lighting Fixtures
 - Tree and shrub planting to match Air Cargo Road
 - Bicycle lanes in roadway

Tampa Bay Boulevard – Dale Mabry Intersection Concept

- Add medians between Lois and Dale Mabry to match character of Air Cargo Road
- Historic Signage at intersection of Dale Mabry
- Pedestrian Promenade to Raymond James Stadium



Tampa Bay Boulevard – Median Park Concept

- Develop passive park with seating and historical monuments in median between Lois and Air Cargo Road
- Historic Monuments in round-a-bout and park



Dr. Martin Luther King Jr. Boulevard

- **Sidewalks connect Dale Mabry with Air Cargo Road**
- **Entry Features at Dale Mabry**
- **Curb street edge to improve pedestrian safety**
- **High visibility crosswalks**
- **New lighting fixtures**
- **Tree and shrub planting to enhance aesthetic**

Dr. Martin Luther King Jr. Boulevard



Business Connector Streets

- On-Street parking for local business
- Sidewalks connect Dale Mabry with event parking lots
- Curbing to separate vehicles and pedestrians
- Re-grade ditches as grass drainage swales
- Crosswalks at intersections
- New lighting fixtures
- Tree and shrub planting
- Grass swales



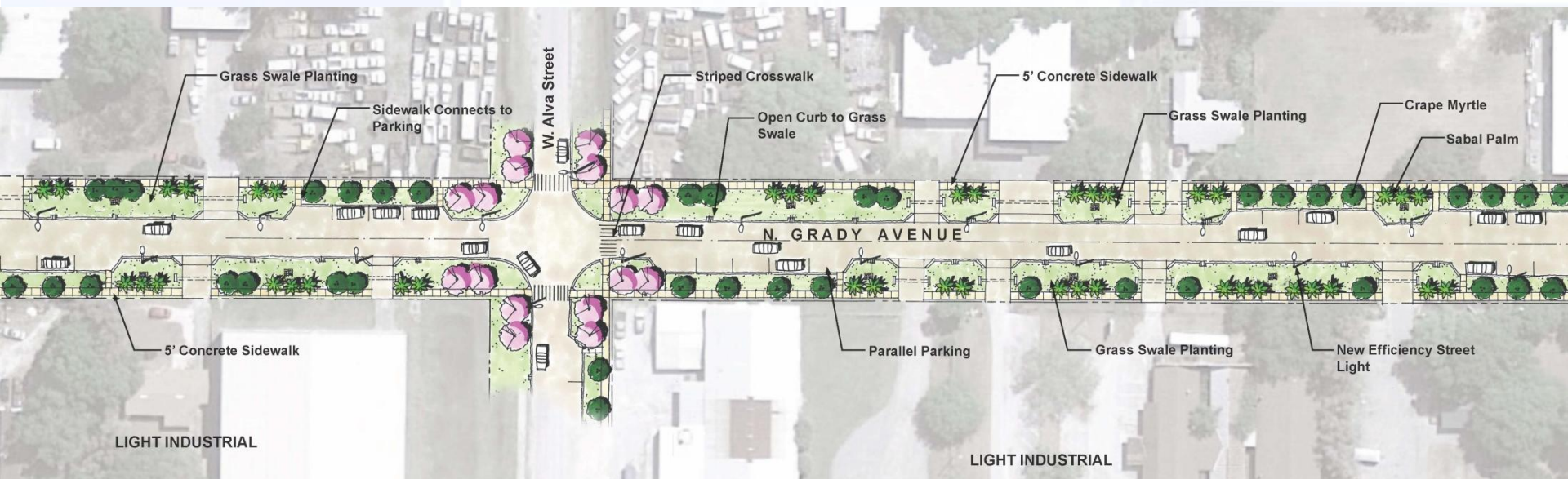
Business Connector Streets



Community Business Streets

- On-Street parking for local business
- Sidewalks at property lines when right-of-way is available
- Curbing to control vehicles
- Re-grade ditches as planted swales
- Crosswalks at intersections
- New Lighting along street
- Tree Planting

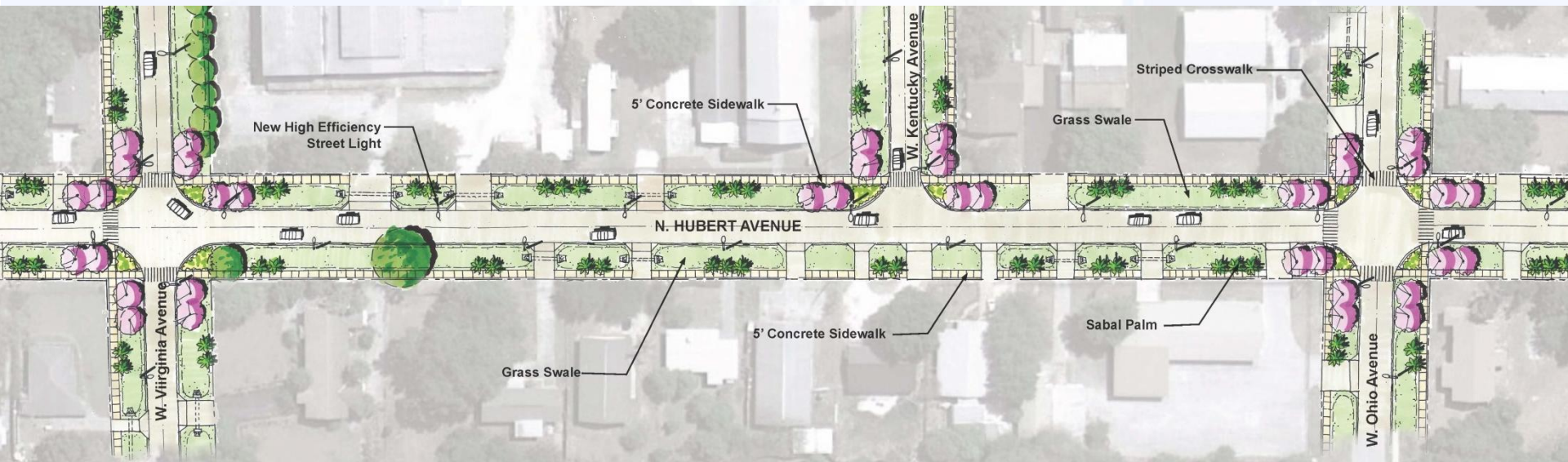
Community Business Streets



Residential Streets

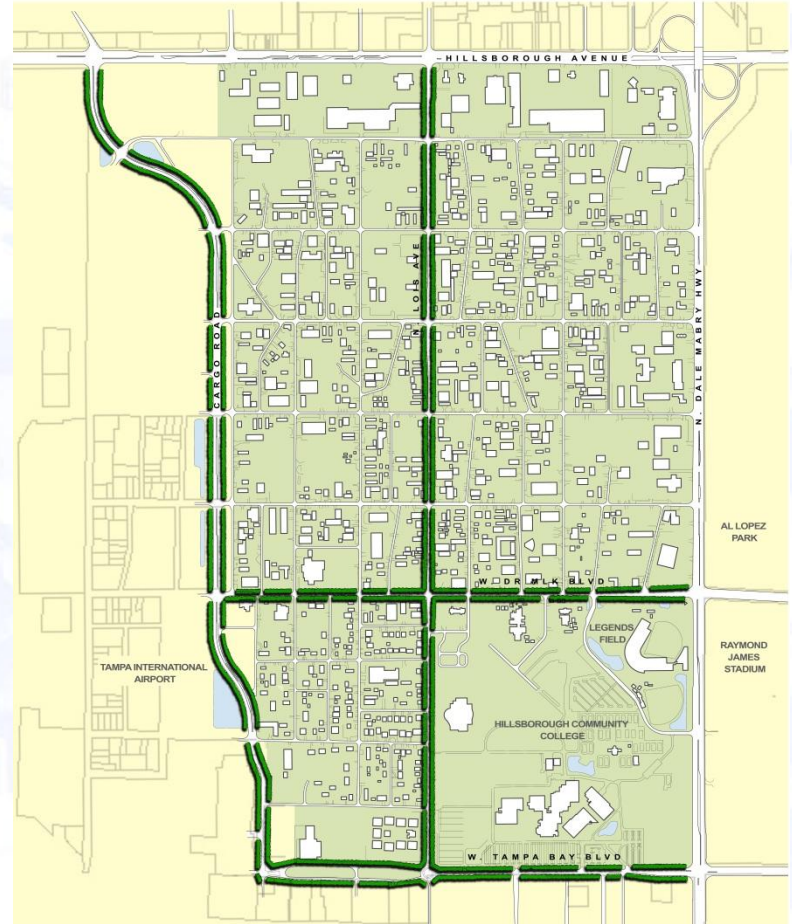
- Sidewalks at property lines to improve child safety
- Utilize curbing to control vehicles in unsafe areas
- Re-grade ditches to improve drainage flow then sod or plant as bio-swales.
- Crosswalk markings at intersections
- New lighting fixtures
- Preserve existing tree canopy – Plant new trees and cabbage palms to provide shade
- Work with residents during final design effort

Residential Streets



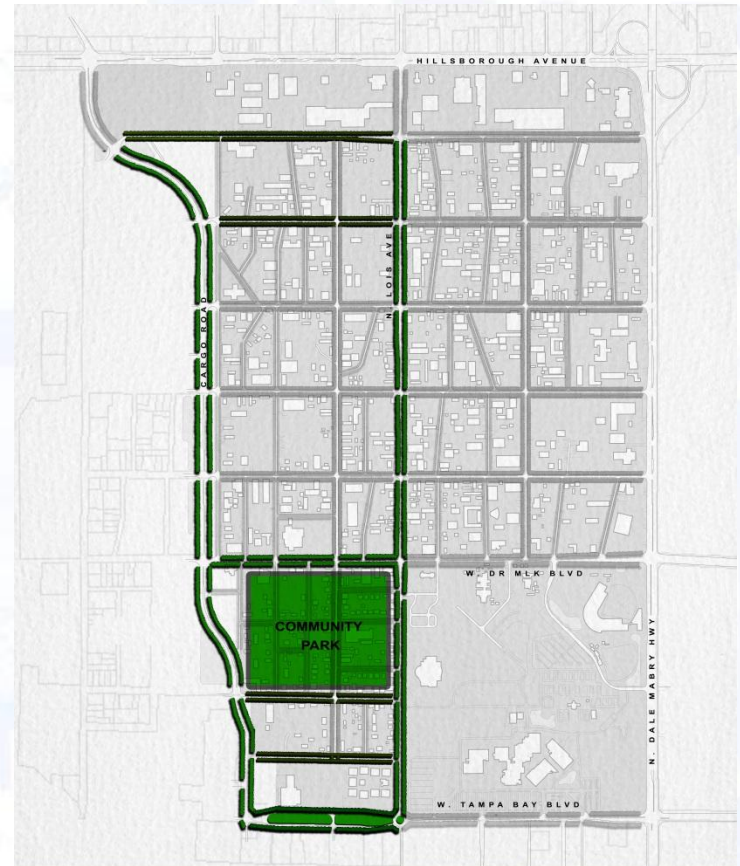
Enable Greater Bicycle Access to and within the CRA

- **Streets with on-street bicycle lanes**
 - Lois Avenue
 - Tampa Bay Boulevard
- **Shared Bicycle signage and markings on MLK and Business Connector Streets**



Provide opportunities for exercise and recreation

- Expand Cargo Road improvements along Tampa Bay Boulevard and Lois Avenue as a new Linear Park
- Construct new community park in residential neighborhood with both active youth and children's play areas



Community Park Images



Encourage Sustainable Design Solutions

- Helps to reduce street flooding
- Improves groundwater quality
- Benefits plant growth, reduces irrigation requirements
- Improves appearance of streets and neighborhoods
- Can reduces mowing requirements



Introduce Public Art

- Reflect the local industrial business community
- Identify Historic sites or events
- Reflect on the diversity of the communities residents and businesses



ents



Design Standards

- Furnishings



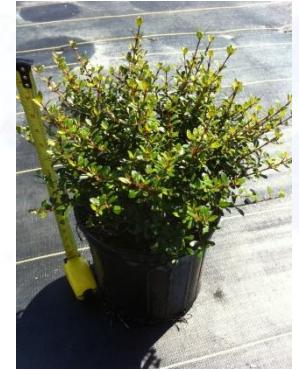
Design Standards

- Trees

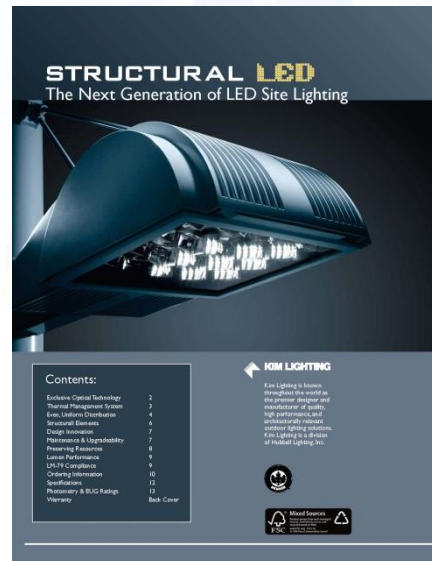


Design Standards

- Shrub and Groundcover Plantings

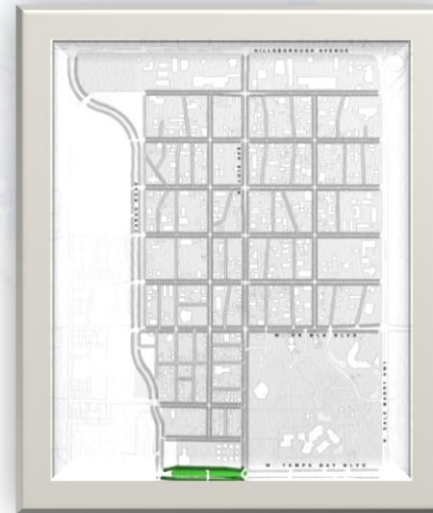
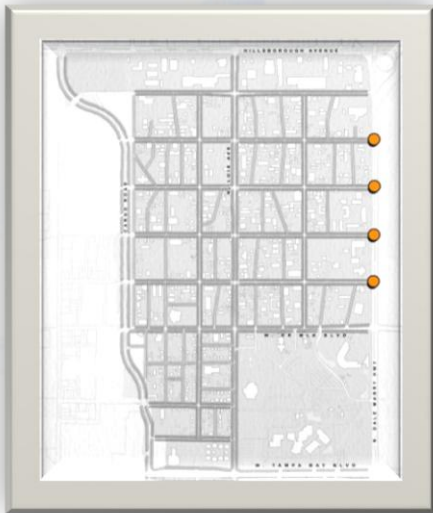


- **Work with TECO to integrate new high efficiency lighting fixtures throughout the CRA**



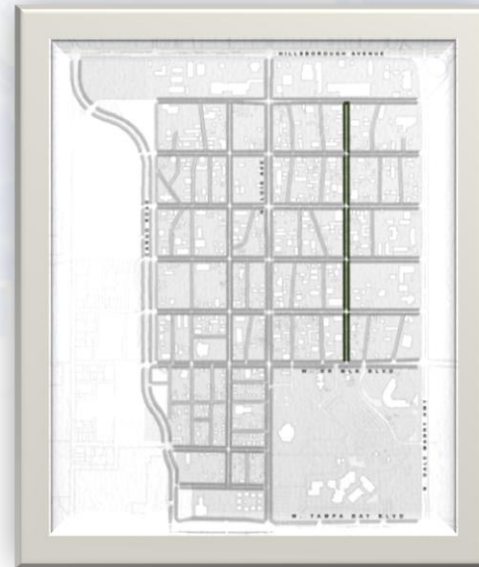
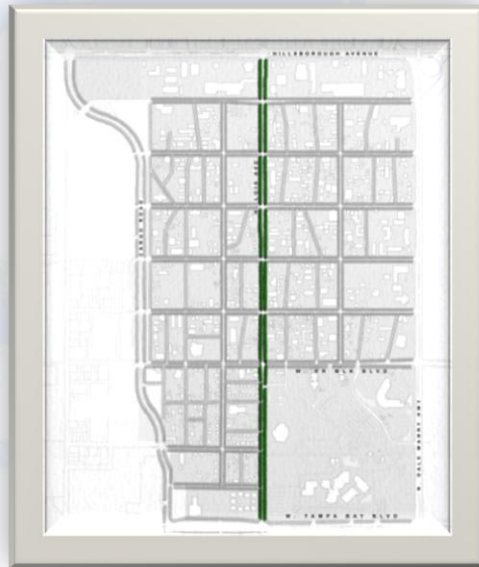
Implementation Options

- **Projects that can be completed within 18-24 months with available funds**
 - **Community Identifier Monuments (\$50-60K)**
 - **Tampa Bay Median Park (\$700K)**



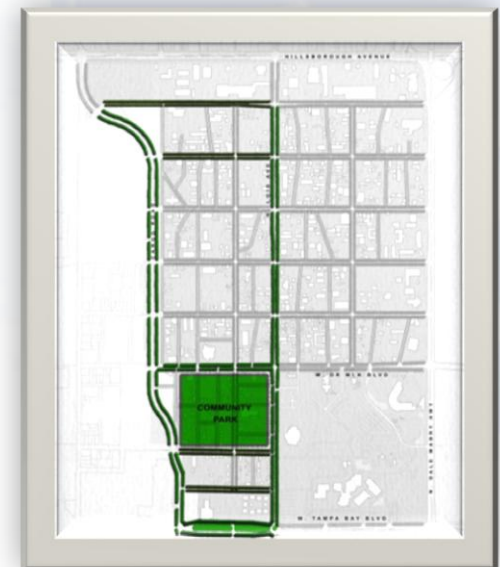
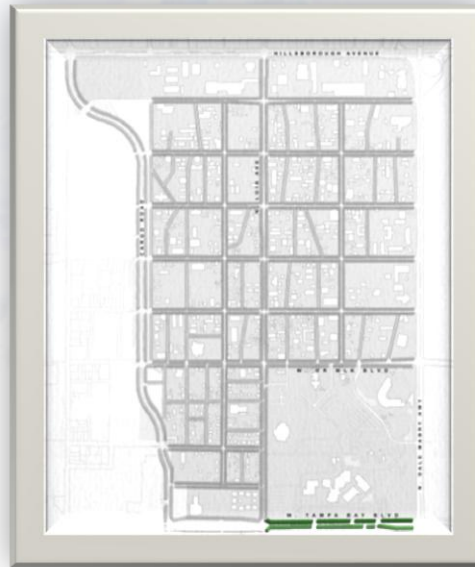
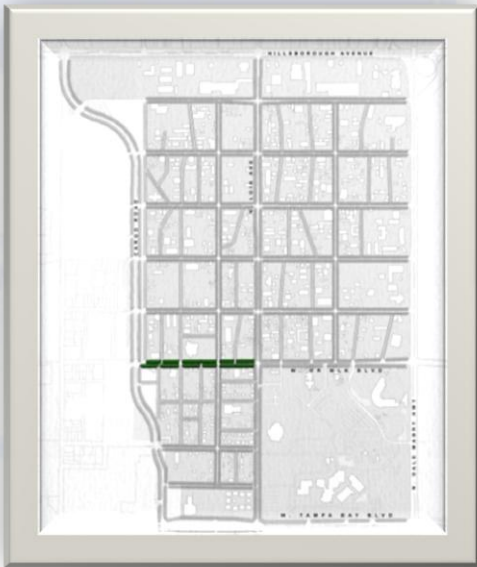
Implementation Options

- **Projects to be completed as part of Stormwater Enhancement Project**
 - **Lois Avenue Enhancements – Complete 2013 (\$850K)**
 - **Grady Avenue – Complete 2012 (\$240K)**



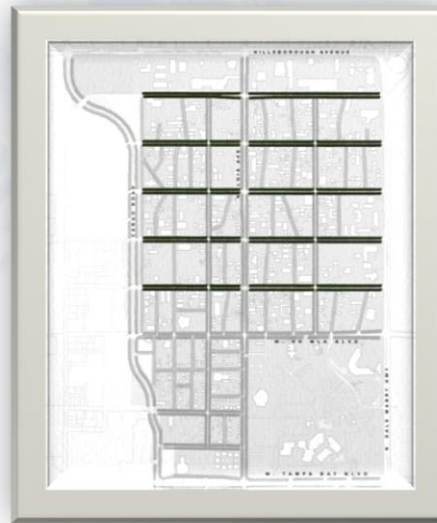
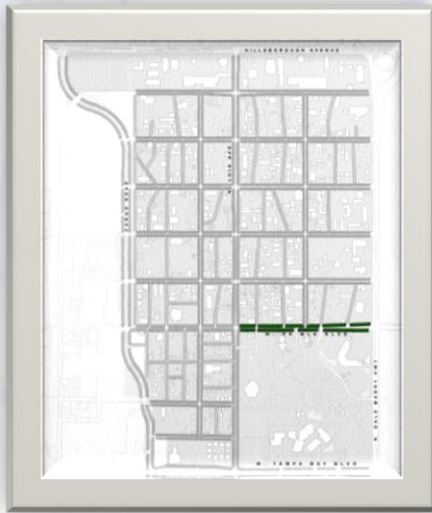
Implementation Options

- **Projects that will require further study and funding**
 - MLK from Lois to Air Cargo Road
 - Tampa Bay Boulevard from Dale Mabry to Lois
 - Community Park



Implementation Options

- **Projects that should follow Drainage Improvements**
 - **MLK from Dale Mabry to Lois Avenue (\$150)**
 - **Business Connector Streets**



- **Projects that can be completed as funds are available**

- **Community Business Streets**
- **Residential Streets**

