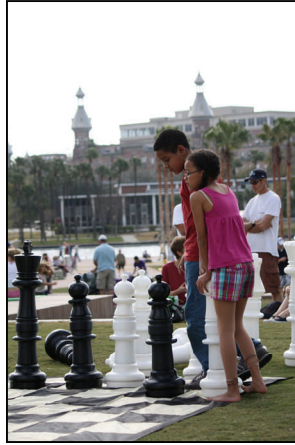


Downtown COMMUNITY REDEVELOPMENT AREA



Current Development Highlights

November 2010

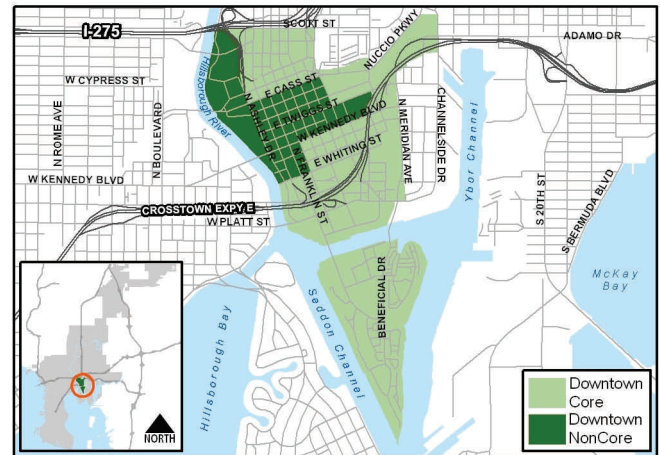
- The Downtown CRA is hosting a high speed rail community meeting on November 17th at the Hyatt Downtown at 5:30 p.m.
- The Glazer Children's Museum recently opened next to the new Tampa Museum of Art in Curtis Hixon Waterfront Park.
- Construction of Sage Partners' \$27 million, 120-unit housing development is underway at the site of the former St. Paul AME Church.
- USF is moving forward with plans to construct the Center for Advanced Medical Learning and Simulation (CAMLs) adjacent to Fort Brooke Garage.
- The Tampa-Ybor Historic Streetcar line has been extended along N. Franklin Street to Whiting Street.

At-a-Glance

From FY11 CRA Budget Book

CRA Created	1983 (amended 1988)	
CRA Area (Acres)	870	
TIF Established	1983	
TIF Base Year	1983	
Base Year Taxable Assessment	\$454,090,045	
Current Taxable Assessment	\$1,565,367,642	
Change From Base Year	\$1,111,277,597	
Change From Base Year (%)	245	
FY11 TIF Revenue (@95%)	\$13,248,541	
Property Profile:	FY11 Tax Base	FY10 Tax Base
• Homesteaded	\$263,646,442	\$288,305,396
• Non-Homesteaded	\$394,549,782	\$386,845,320
• Hotel	\$229,961,939	\$262,929,928
• Office/Retail	\$516,219,198	\$600,581,483
• Other Commercial	\$137,345,077	\$187,039,162
• Ind./Man.	\$6,771,306	\$9,828,516
• Vacant Land	\$16,873,898	\$29,804,281
• Hotel Rooms (#)	2,597	
• Meeting Space (SF)	504,488	
• Municipal Parking Spaces	8,376	
◊ Garage Spaces	6,763	
◊ Surface Lot Spaces	1,613	

Sources: Hillsborough Co. Property Appraiser, CRA Manager and the City's Parking Division.
Note: Assessment values and revenues may not reflect final millage rates for the fiscal year.



Bob McDonough, Manager
306 E. Jackson Street, 2N, Tampa, Florida 33602
Tel 813-274-8245 Fax 813-274-7410