

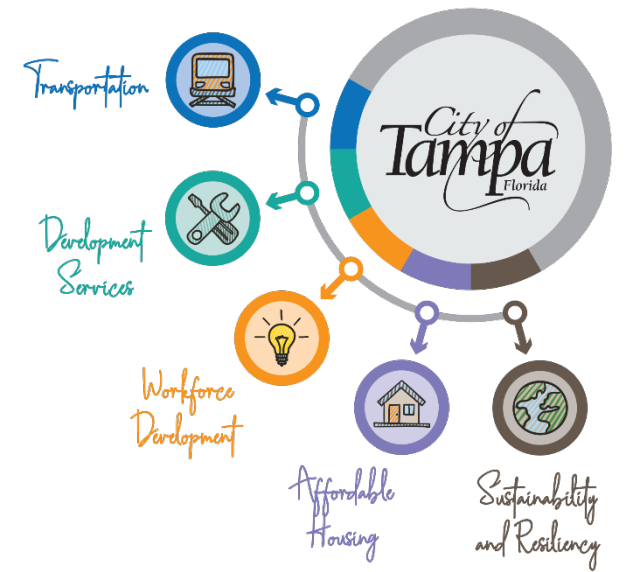
WELCOME

City of Tampa Economic Advisory Committee
Virtual Meeting #7
November 18, 2020

Agenda – Meeting #7 (November 18)

Welcome & Committee Purpose	5 minutes
Review Draft of Report Finalize tactical and strategic initiatives	30 minutes
Advisory Team Discussion	10 minutes
Public Comment	10 minutes
Next Steps	5 minutes
Adjourn	

Committee Purpose and Timeline



A. Identify 'best practice' social and economic metrics

Meetings 1 & 2 (August – Sept)

B. Recommend key metrics relevant to City of Tampa needs

Meetings 3- 4 (September)

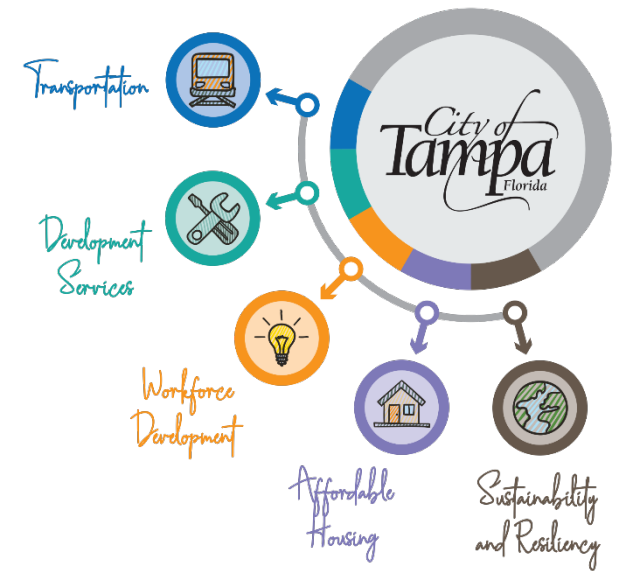
C. Recommend tactical and strategic initiatives to improve selected metrics

Meetings 4 - 6 (September – October)

D. Finalize Report

Meeting 7 (November)

Groups 1-4 Focus Categories and Metrics



1. Inclusive Economic Growth

- a. Per Capita Income
- b. Unemployment Rate

2. Reducing Poverty

- a. Poverty rate
- b. Transportation to Work
- c. Digital Access

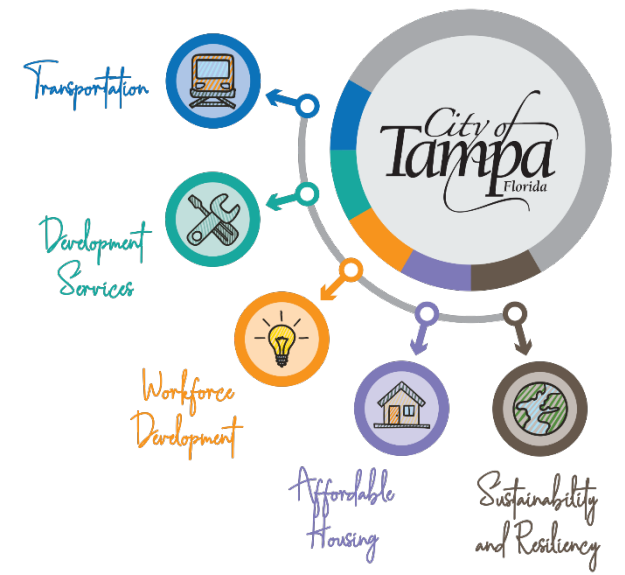
3. Racial Equity

- a. Racial Poverty rate gap
- b. Racial Labor Force Participation Gap

4. Education Opportunity

- a. 4th/8th Grade Math Florida Standards Assessment (FSA)
- b. High School Graduation Rate
- c. Educational Attainment (Bachelor's degree and above)

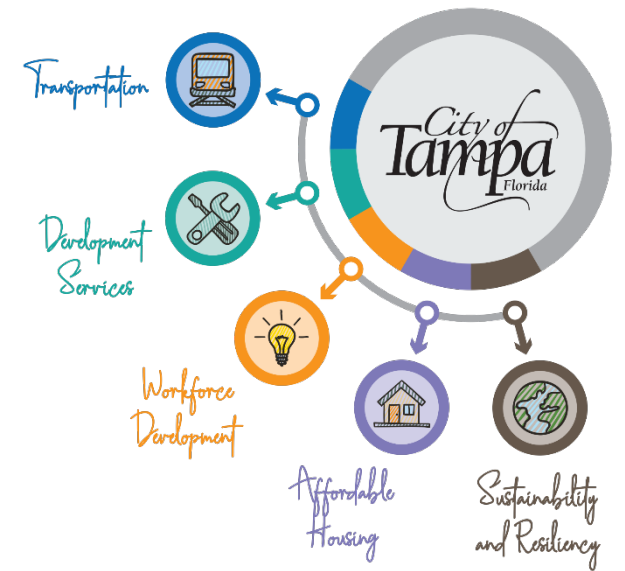
* See one-pager hand-out for detailed description of each metric



Review Draft of Report

Finalize tactical and strategic initiatives

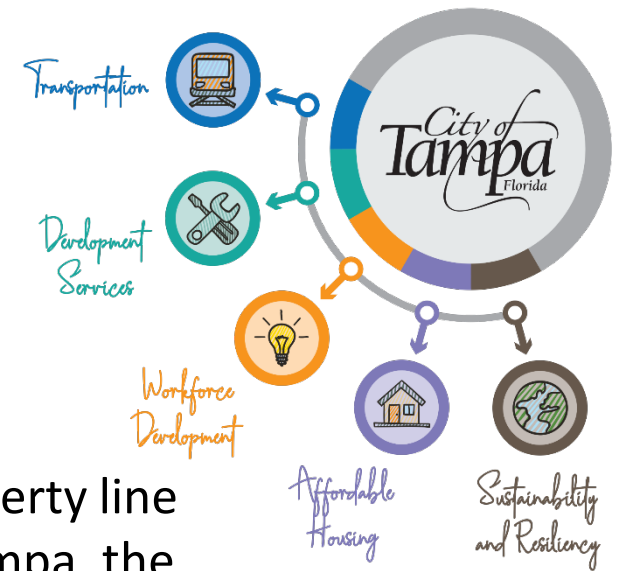
Focus Categories and Metrics Defined



1. Inclusive Economic Growth

- A. *Per Capita Income*: This measures the mean income for every person (man, woman, and child) living in a city. It is derived by dividing the total income generated in a city in the past 12 months by the total population of the city.
- B. *Unemployment Rate*: The percentage of the labor force that is without employment. An individual is considered unemployed if he/she is willing and able to work but unable to find employment.

Focus Categories and Metrics Defined



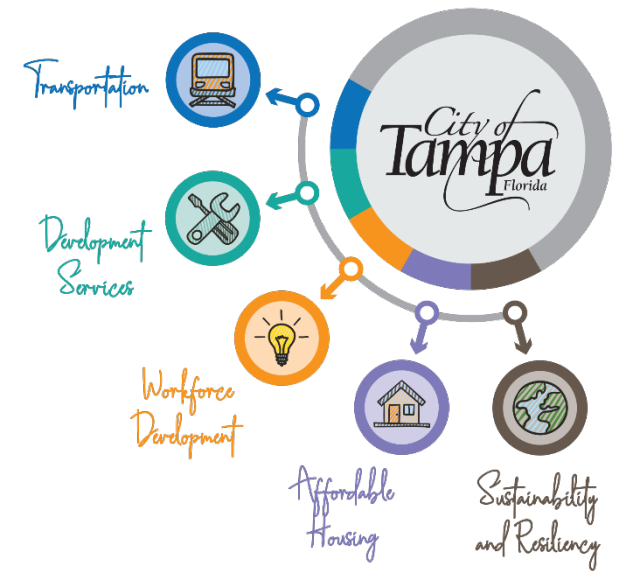
2. Reducing Poverty

A. *Poverty rate*: The percentage of population that is living below the federal poverty line defined by the US Census Bureau (Income thresholds vary by family size). For Tampa, the Poverty level thresholds in 2019 are: 1-person Household: \$13,011; 2-person Household: \$16,521; 3-person Household: \$20,335; and 4-person Household: \$26,172.

B. *Transportation to Work*: The share of workers 16 years and older that rely on public transit or walking to commute to work. This data is from US Census Bureau, American Community Survey. This metric measures the proportion of workers who either walk or use public transit (does not include workers who use bike or scooter) to commute for work and reflects public transit availability which is an important driver affecting poverty reduction.

C. *Digital Access*: The share of households with a computer and a dedicated physical broadband with internet subscription such as fiber optic or DSL.

Focus Categories and Metrics Defined

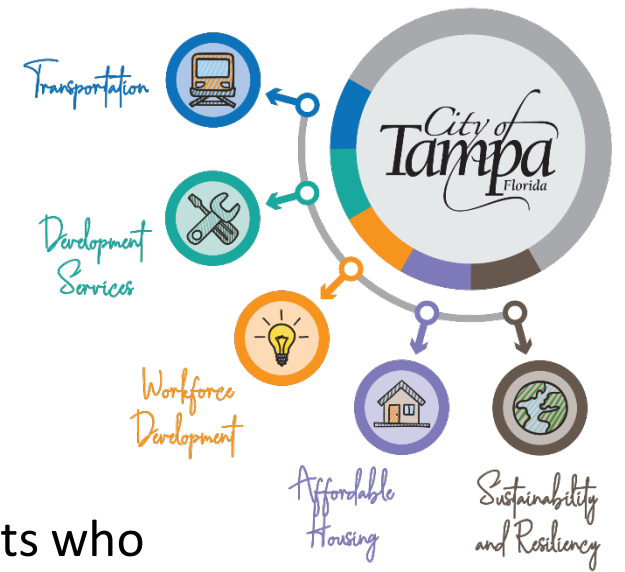


3. Racial Equity

A. *Racial Poverty rate gap*: The black-white gap in share of workers working fulltime with income below the poverty line (calculated by comparing the average poverty rate for African Americans vs White-Americans).

C. *Racial Labor Force Participation Gap*: The black-white gap in the percentage of the population 16 years and older that is either working or actively looking for work. It is calculated by subtracting the labor force participation of African Americans from that of White-Americans.

Focus Categories and Metrics Defined

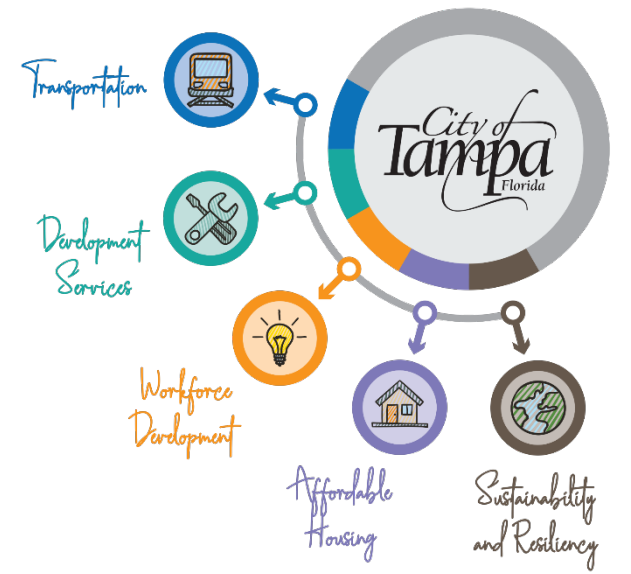


4. Education Opportunity

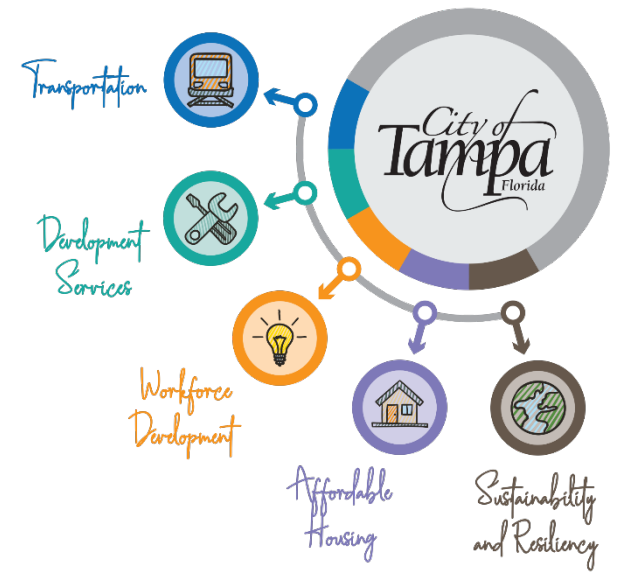
A. *3rd/8th Grade Math Florida Standards Assessment (FSA)*: Percentage of students who took the 3rd and 8th Grade Math, Florida Standard Assessment, and got a level 3 or higher.

B. *High School Graduation Rate*: Percentage of High School graduates in the school district of the city.

C. *Educational Attainment (Bachelor's degree and above)*: Percentage of population, 25 years and older, who have attained a bachelor's degree or higher.

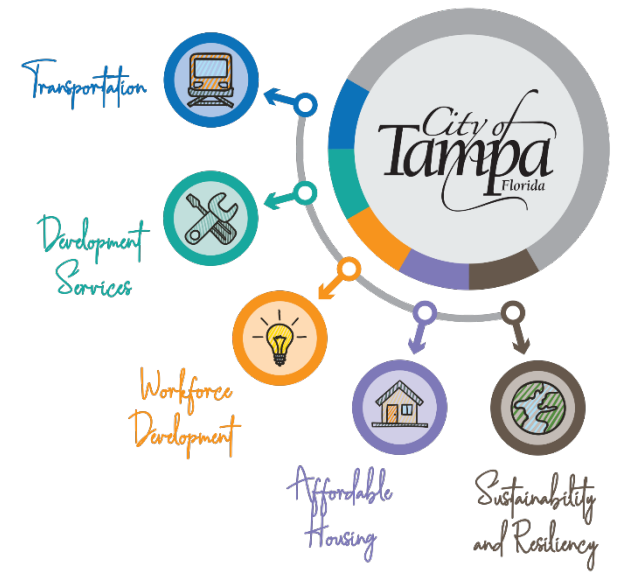


Advisory Team Discussion



Public Comment

Economic Advisory Committee



Next Steps/Wrap-up

Economic Advisory Committee

Next Meeting (If Any)