

# Geography

## of Tampa's Water Treatment

The David L. Tippin Water Treatment facility is one of the largest surface water treatment plants in Florida. This is where the water from the Hillsborough River is collected and treated. Once the water is treated and stored in underground storage tanks, called **clearwells**, it travels through 2,300 miles of pipe to homes and businesses.

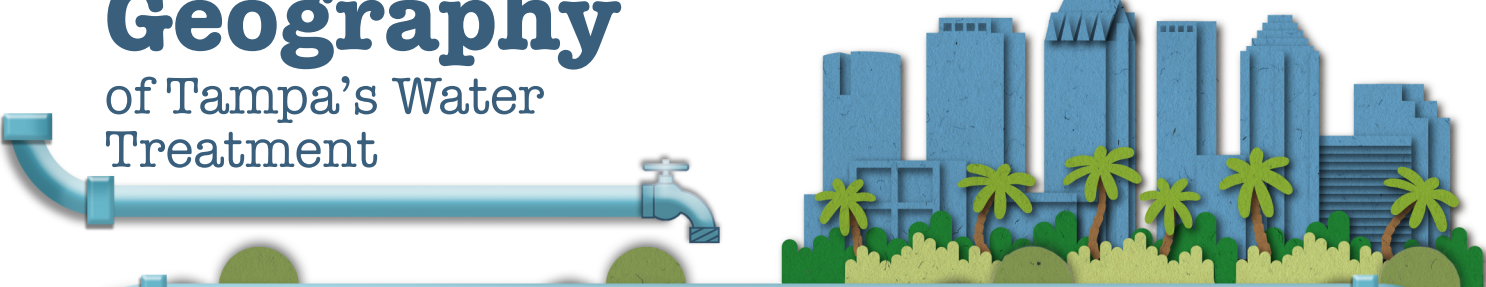


DAVID L. TIPPIN WATER TREATMENT FACILITY

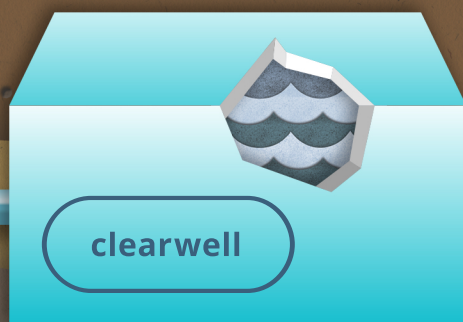
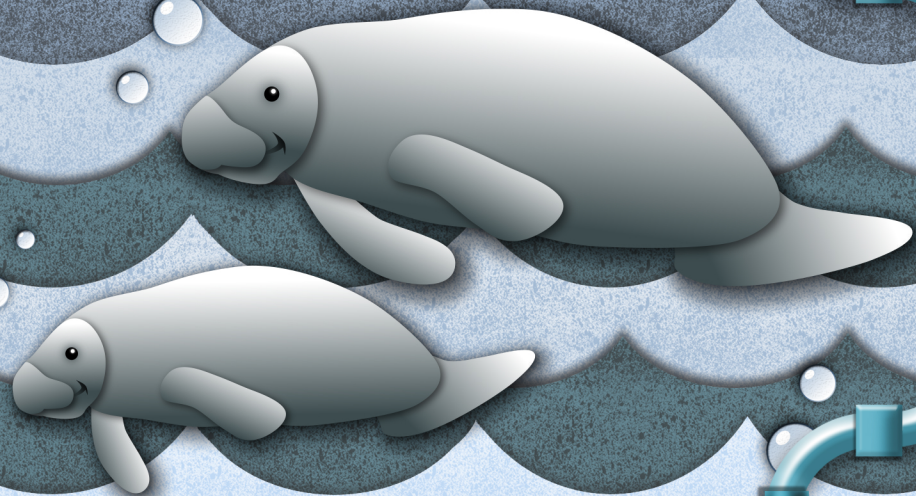


# Geography

## of Tampa's Water Treatment



When everyone gets up in the morning and gets ready for work, there is a drastic increase in demand for water across the City. The same thing happens in the early evening when most people get home from work and are having dinner. When the demand is high, water must be drawn from the clearwells to keep up with the demand. When water demand is low, water that is produced but not used goes in to clearwells to refill them.



As needed, finished water is pumped by large pumps from clearwells into a web-like distribution system that covers the entire service area. This is how the treated water gets to all areas of Tampa, now that our population has grown so much and is so spread out.



# Geography

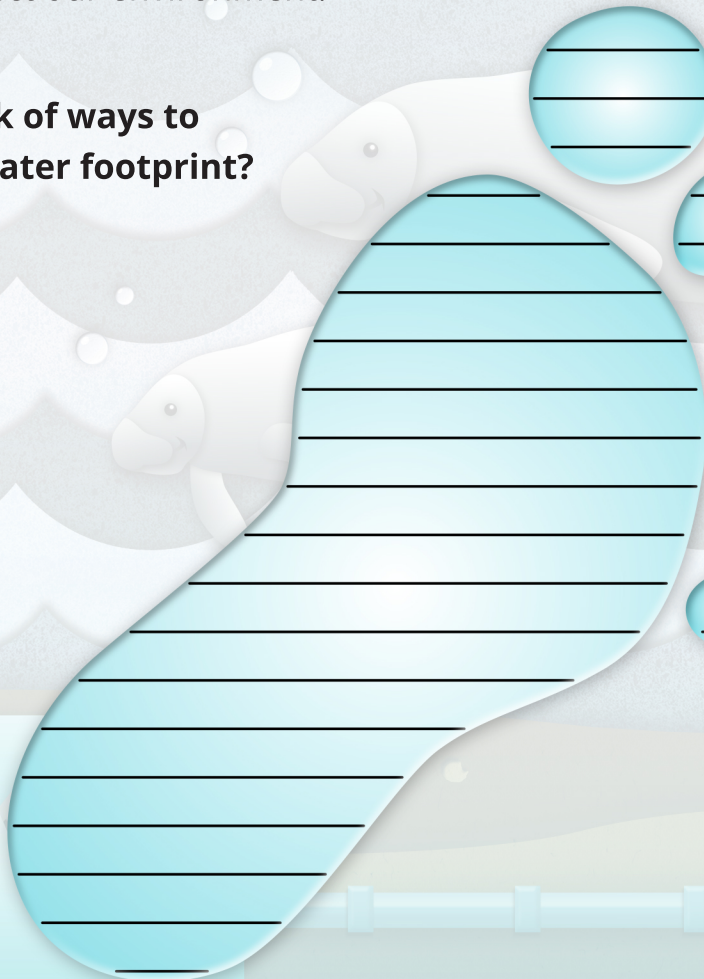
## of Tampa's Water Treatment

### What's your water footprint?

The water footprint of a person or community is the total volume of freshwater used by the person or community. According to the Environmental Protection Agency, the average person uses about 100 gallons of water a day. In fact, one flush of the toilet uses as much water as the average person in the developing world uses for an entire day's cooking, washing, cleaning and drinking!

Conserving water is the best way to make sure we always have water for our planet and protect our environment.

**Can you think of ways to lower your water footprint?**





# Geography

## of Tampa's Water Treatment

### Word Search

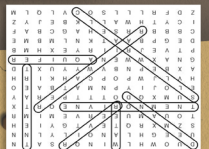
D	U	O	W	H	L	W	I	N	Q	R	S	A	T	N
U	E	E	G	H	L	A	N	O	I	L	Y	L	N	N
S	Z	M	X	R	Q	T	E	V	T	G	Y	I	E	H
T	O	U	A	M	U	E	E	R	V	E	M	I	M	R
T	N	E	M	N	O	R	I	V	N	E	O	R	T	X
S	U	M	X	Q	D	O	T	T	T	P	E	R	A	Y
E	L	O	J	I	Y	P	N	M	A	T	B	A	E	O
H	V	L	J	W	P	O	P	C	A	H	K	I	R	H
A	X	B	E	P	N	B	V	W	Y	Y	U	X	T	D
G	N	A	X	W	W	E	N	A	Q	U	I	F	E	R
P	T	V	E	J	R	I	I	R	Y	E	X	H	M	B
D	E	G	P	B	A	A	T	K	N	L	M	B	M	E
C	B	B	B	R	R	S	E	H	A	G	C	B	A	F
I	C	Y	T	H	W	A	L	L	K	B	E	J	Y	Z
Z	D	F	R	L	L	L	S	O	C	V	L	Q	L	M

**AQUIFER**  
**CLEARWELLS**  
**DEMAND**

**ENVIRONMENT**  
**RAINWATER**  
**RIVER**

**TREATMENT**  
**WATER**

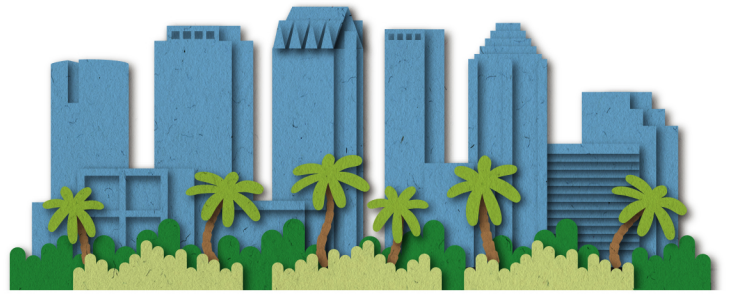
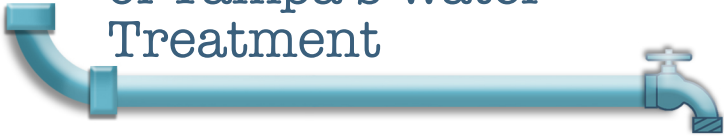
Answer  
(backwards)



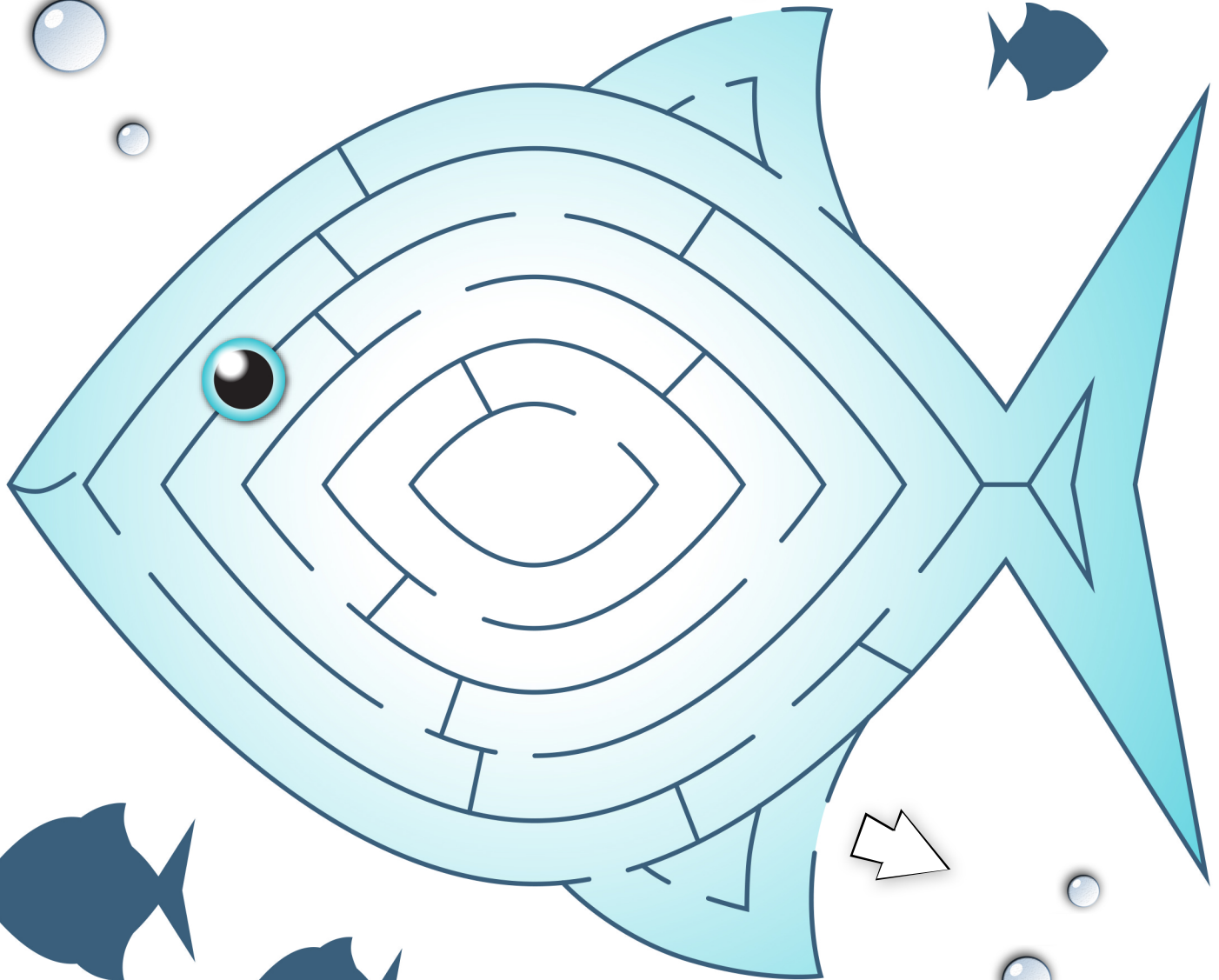
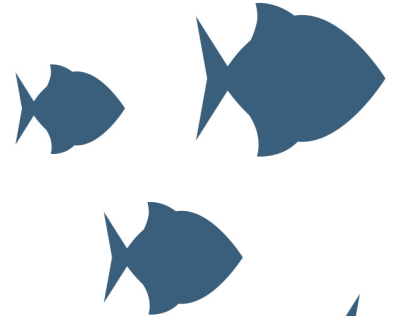


# Geography

of Tampa's Water  
Treatment



Start Here!



Answer  
(backwards)

