

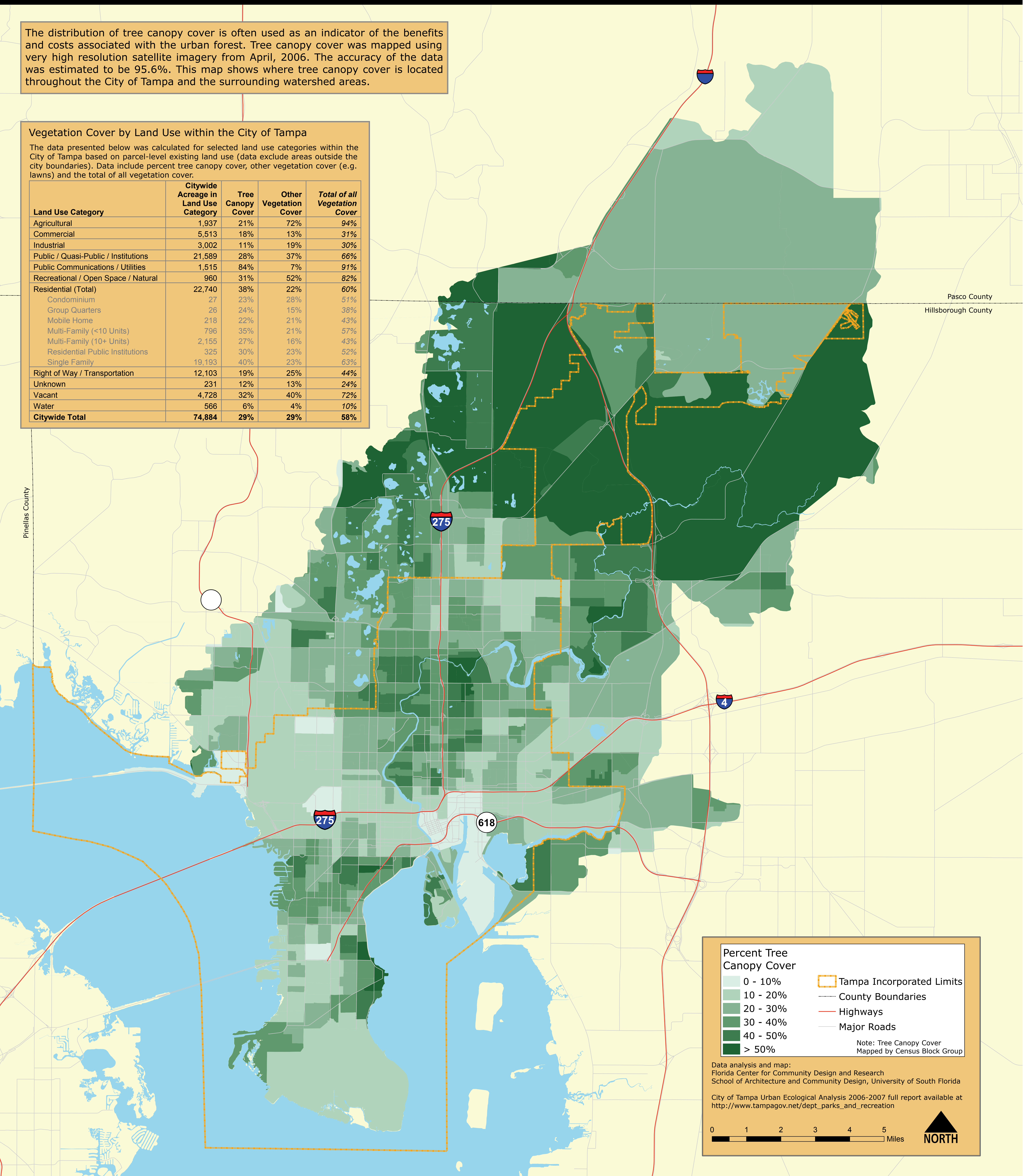
2006 City of Tampa Tree Canopy Cover

The distribution of tree canopy cover is often used as an indicator of the benefits and costs associated with the urban forest. Tree canopy cover was mapped using very high resolution satellite imagery from April, 2006. The accuracy of the data was estimated to be 95.6%. This map shows where tree canopy cover is located throughout the City of Tampa and the surrounding watershed areas.

Vegetation Cover by Land Use within the City of Tampa

The data presented below was calculated for selected land use categories within the City of Tampa based on parcel-level existing land use (data exclude areas outside the city boundaries). Data include percent tree canopy cover, other vegetation cover (e.g. lawns) and the total of all vegetation cover.

Land Use Category	Citywide Acreage in Land Use Category	Tree Canopy Cover	Other Vegetation Cover	Total of all Vegetation Cover
Agricultural	1,937	21%	72%	94%
Commercial	5,513	18%	13%	31%
Industrial	3,002	11%	19%	30%
Public / Quasi-Public / Institutions	21,589	28%	37%	66%
Public Communications / Utilities	1,515	84%	7%	91%
Recreational / Open Space / Natural	960	31%	52%	82%
Residential (Total)	22,740	38%	22%	60%
Condominium	27	23%	28%	51%
Group Quarters	26	24%	15%	38%
Mobile Home	218	22%	21%	43%
Multi-Family (<10 Units)	796	35%	21%	57%
Multi-Family (10+ Units)	2,155	27%	16%	43%
Residential Public Institutions	325	30%	23%	52%
Single Family	19,193	40%	23%	63%
Right of Way / Transportation	12,103	19%	25%	44%
Unknown	231	12%	13%	24%
Vacant	4,728	32%	40%	72%
Water	566	6%	4%	10%
Citywide Total	74,884	29%	29%	58%



Percent Tree Canopy Cover

- 0 - 10%
- 10 - 20%
- 20 - 30%
- 30 - 40%
- 40 - 50%
- > 50%

- Tampa Incorporated Limits
- County Boundaries
- Highways
- Major Roads

Note: Tree Canopy Cover Mapped by Census Block Group

Data analysis and map:
 Florida Center for Community Design and Research
 School of Architecture and Community Design, University of South Florida
 City of Tampa Urban Ecological Analysis 2006-2007 full report available at
http://www.tampagov.net/dept_parks_and_recreation

