



# W. Bay to Bay Boulevard Complete Streets (from S. Dale Mabry Highway to Bayshore Boulevard) City Project #0000075

## Project Description:

The approximately one-mile segment of W. Bay to Bay Boulevard from S. Dale Mabry Highway to Bayshore Boulevard is a 4-lane Urban Collector roadway with a posted speed of 35 mph serving both residential and commercial uses. W. Bay to Bay Boulevard is a Hillsborough County Roadway.

This project consists of the undivided four-lane section to remain within the corridor with the following changes:

From S. Dale Mabry Hwy. to S. Esperanza Ave., the following is recommended:

- The width of the outside travel lanes will be reduced in each direction to a minimum of 10 feet to provide for the installation of a 1-2 foot buffer area between the sidewalk and the outside travel lane. These changes will provide a traffic calming effect and provide a buffer between vehicular traffic and pedestrians. This reduction will not accommodate for bike lanes.

From S. Esperanza Ave. to Bayshore Blvd., the following is recommended:

- An additional eastbound left turn lane will be constructed at the intersection of Bay-to-Bay Blvd. and Bayshore Blvd. This will improve the operation of the intersection and provide for a safer crossing of Bayshore Blvd. for bicyclists and pedestrians. The northbound traffic on Bayshore Boulevard will no longer be a free flow movement at this intersection, but will stop at the same time as the southbound traffic.
- A new sidewalk is planned on the south side of Bay to Bay Blvd. between S. Macdill Avenue to Bayshore Boulevard to close the existing sidewalk gaps at the CSX railway and near S. Ysabella Ave. Currently, the right-of-way is being determined for this sidewalk.
- Lane reconfiguration at the intersection of MacDill Ave. and Bay-to-Bay Blvd. will allow for a new left turn lane at the Lee Roy Selmon On-Ramp.

The City plans to implement the improvements from S. Dale Mabry Highway to Bayshore Boulevard under Hillsborough County’s planned resurfacing project in FY 2018 CIP69631.054. The segment from S. Manhattan Avenue to S. Dale Mabry Highway will be considered at a future time. For more information visit: <https://www.tampagov.net/tss-transportation/info/projects/bay-to-bay>

## Location Map:



Figure 1: Typical Section from S. Dale Mabry Hwy to S. Esperanza Ave.

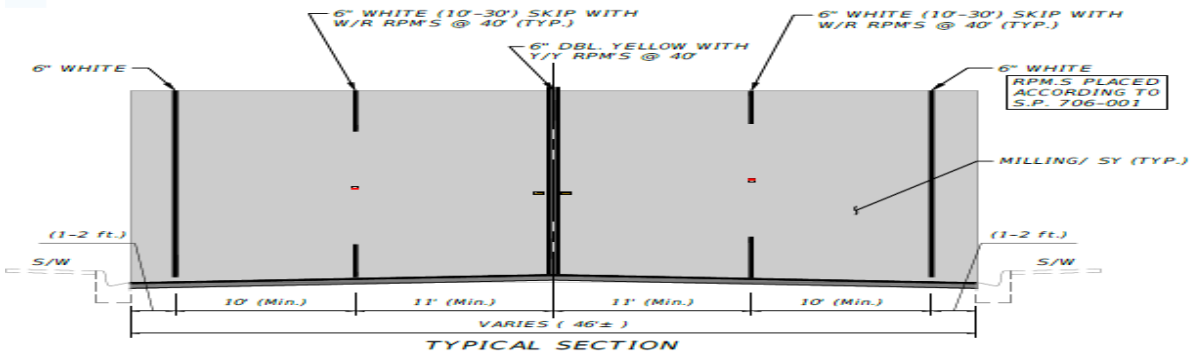


Figure 2: Typical Section from S. Dale Mabry Hwy to S. Esperanza Ave.

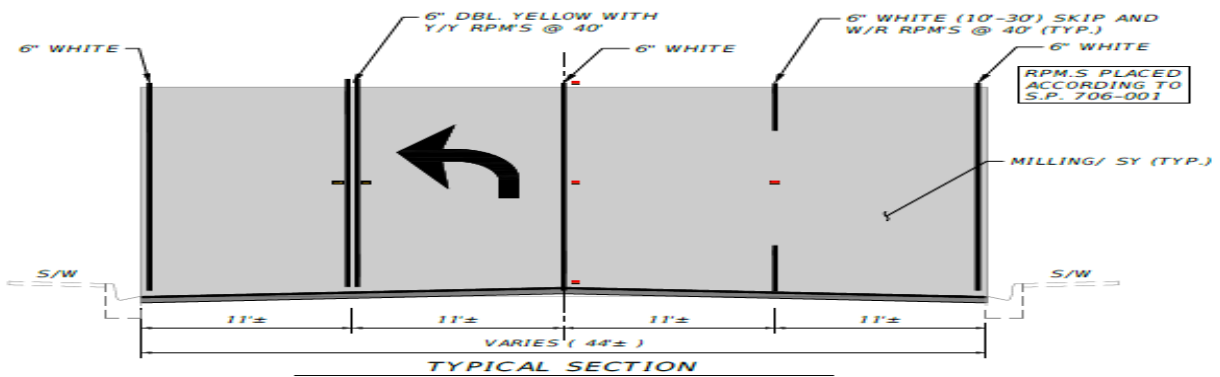
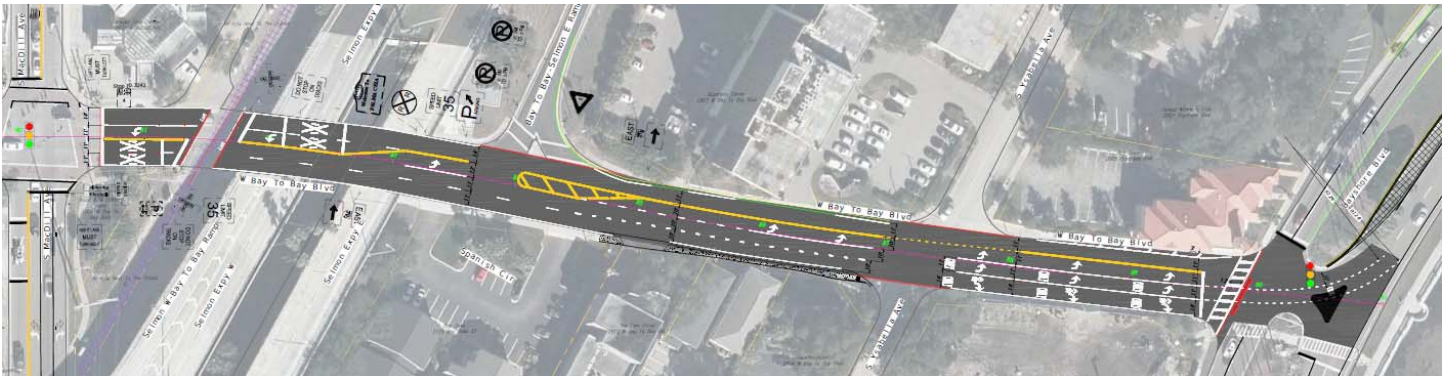


Figure 3: W. Bay to Bay Blvd from S. MacDill Ave to Bayshore Blvd



**Summary of Project Costs and Schedule:**

Phase	Firm	Amount	Funding Source	Schedule	
				Start	Finish
Corridor Study	DKS Associates	\$27,470	City	June 2016	Aug 2017
Design (City)	Faller, Davis & Assoc.	\$82,250	City	Aug 2017	Sep 2018
Design (County)	JMT	\$100,000	County	Nov 2017	Sep 2018
Construction (County)	TBD	\$120,000	City	TBD	TBD
		\$650,000	County		