

# West Tampa Park Studies

## Schematic Design Package

August 24, 2021

### Sheet Index

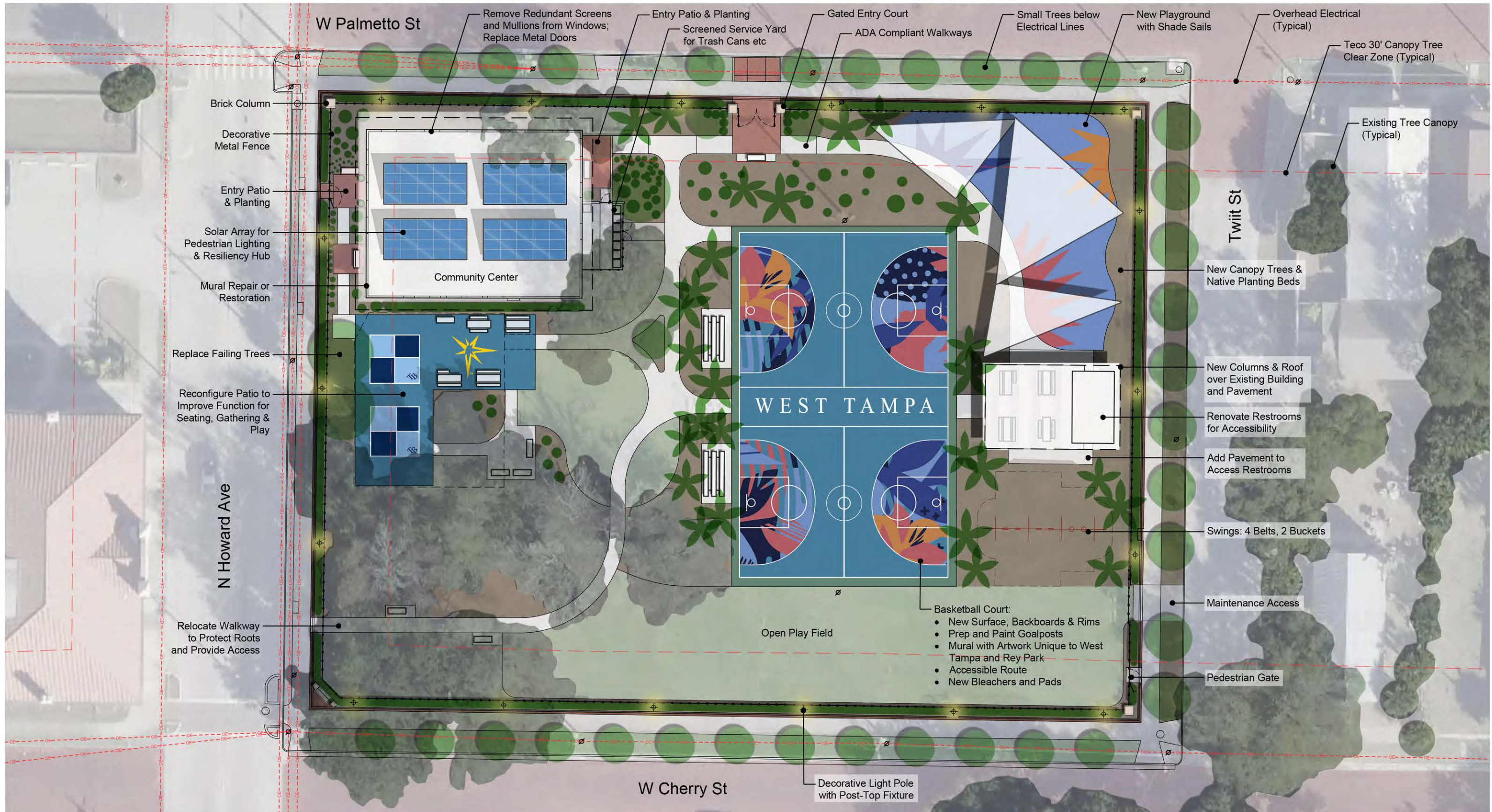
- 1. Rey Park - Existing Conditions
- 2. Rey Park - Conceptual Site Plan
- 3. Rey Park - Concept Sketch
- 4. Rey Park - Concept Sketch
- 5. Salcines Park - Existing Conditions
- 6. Salcines Park - Conceptual Site Plan
- 7. Salcines Park - Conceptual Site Plan
- 8. Salcines Park - Character Images
- 9. Fremont Linear Park - Existing Conditions
- 10. Fremont Linear Park - Concept Plan North
- 11. Fremont Linear Park - Concept Plan Center
- 12. Fremont Linear Park - Concept Plan South
- 15. Fremont Linear Park - Intersection Study







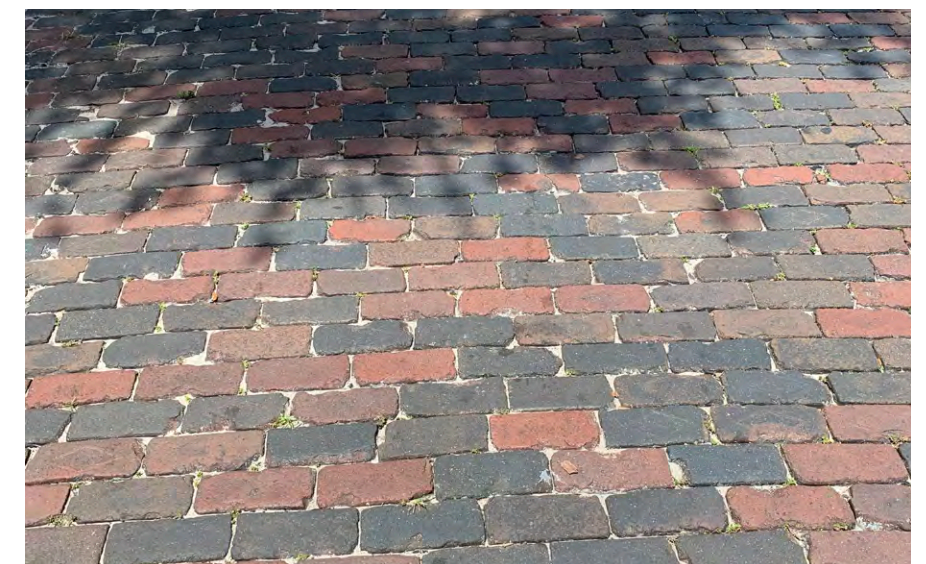
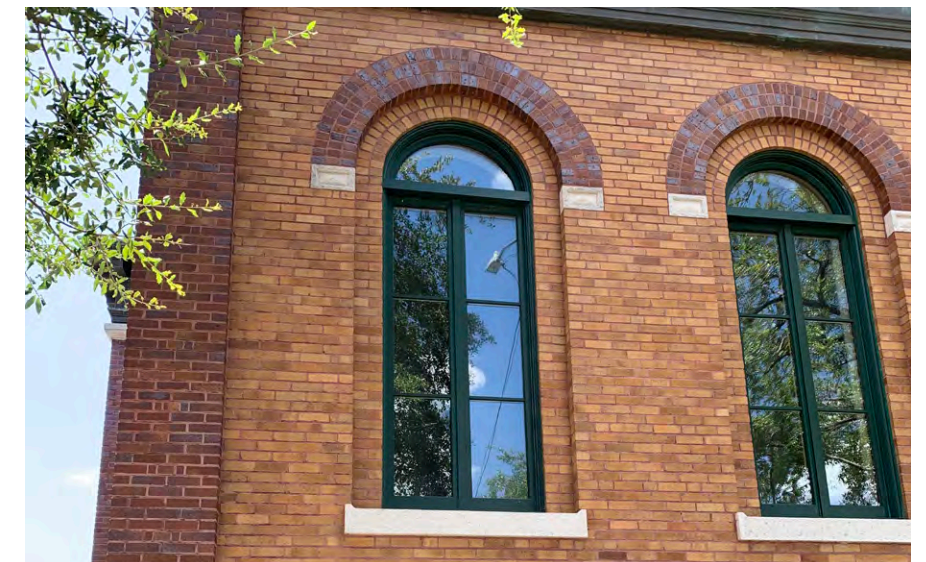
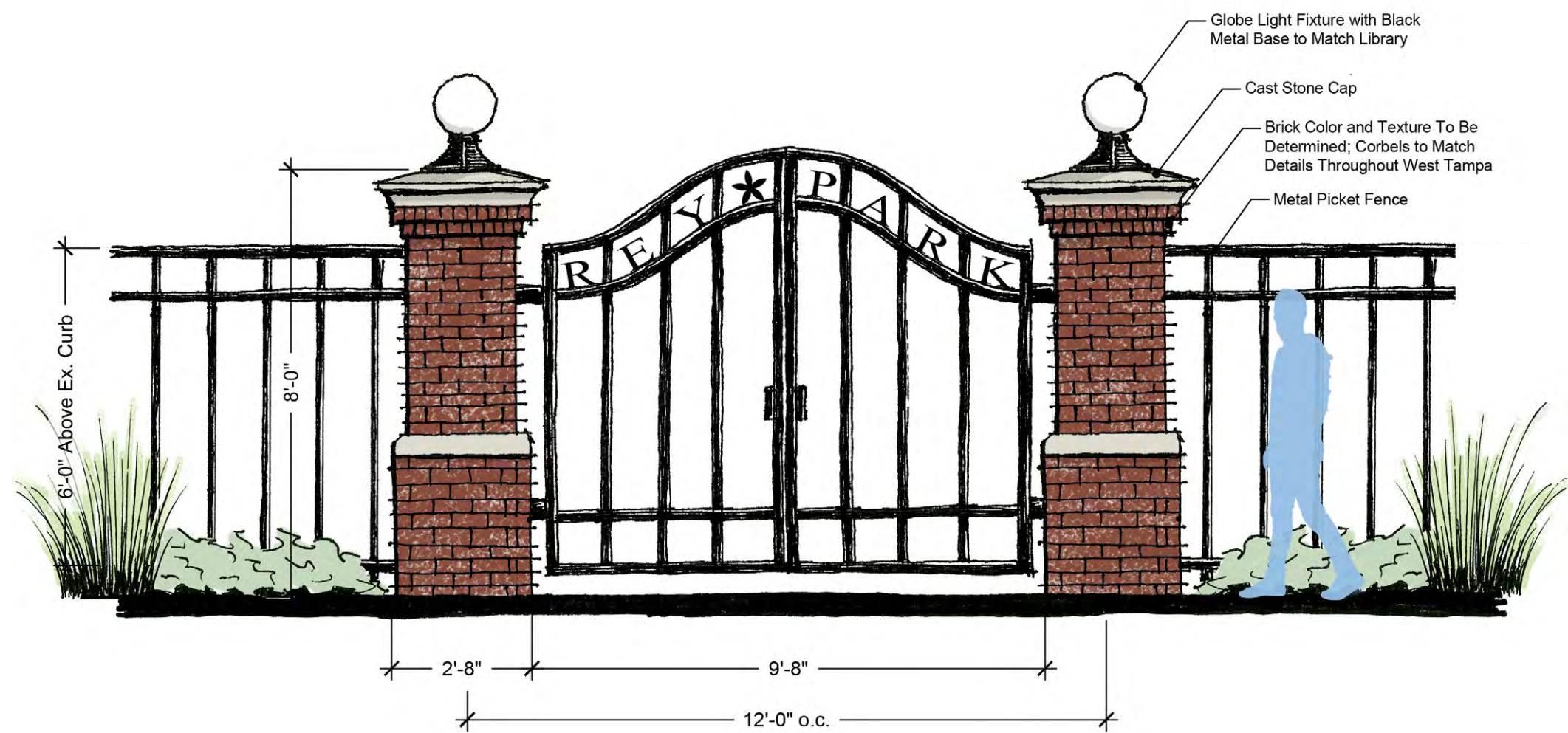




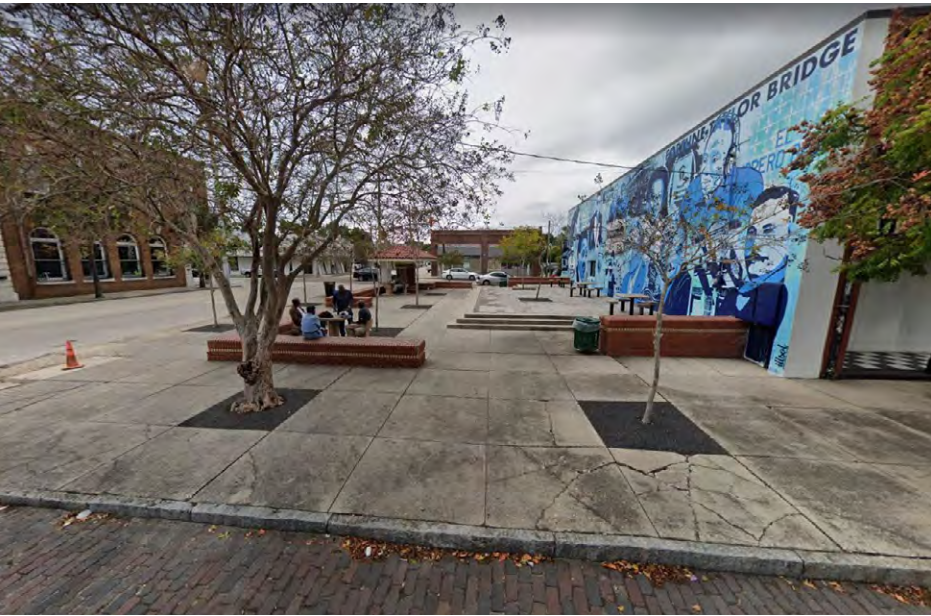
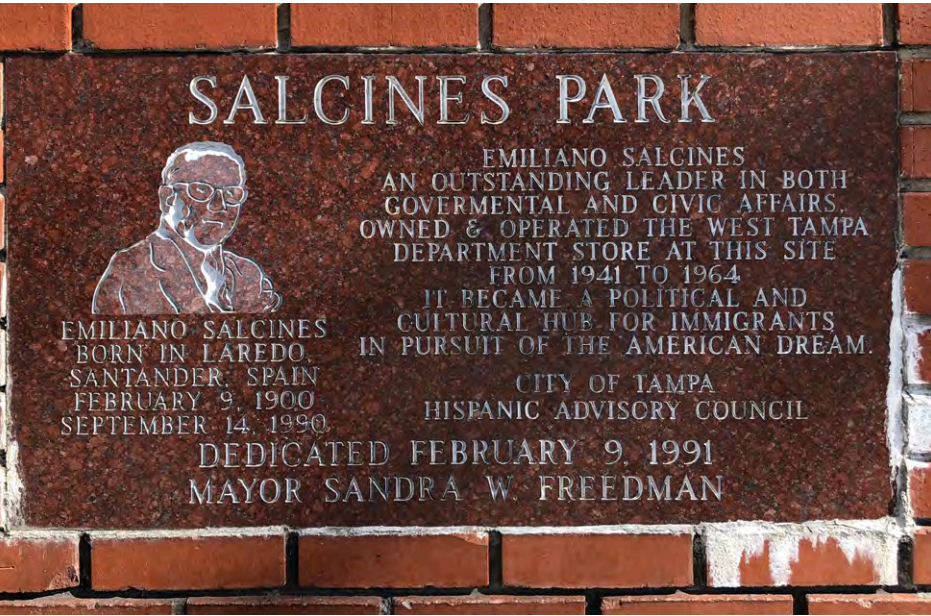




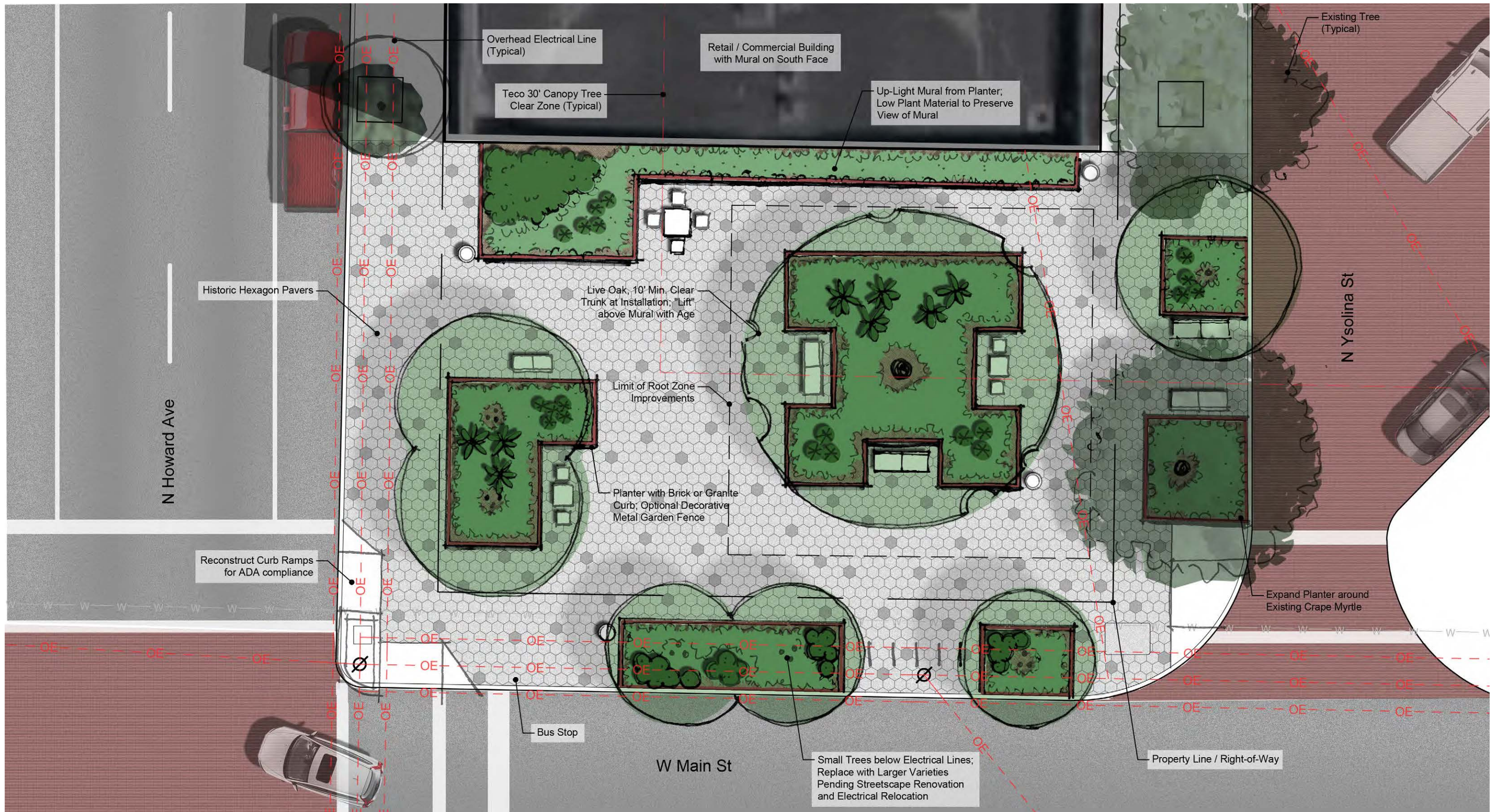




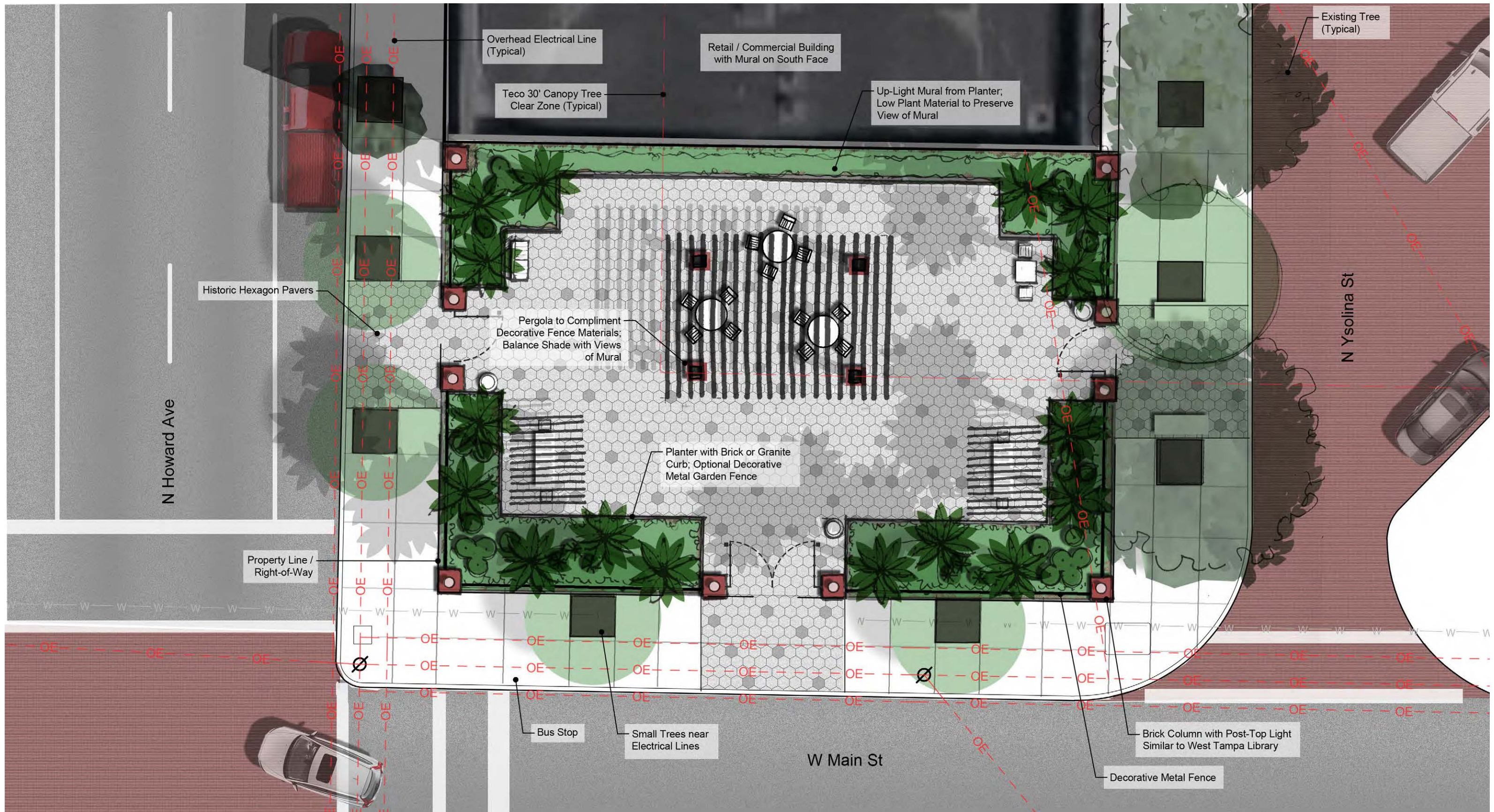




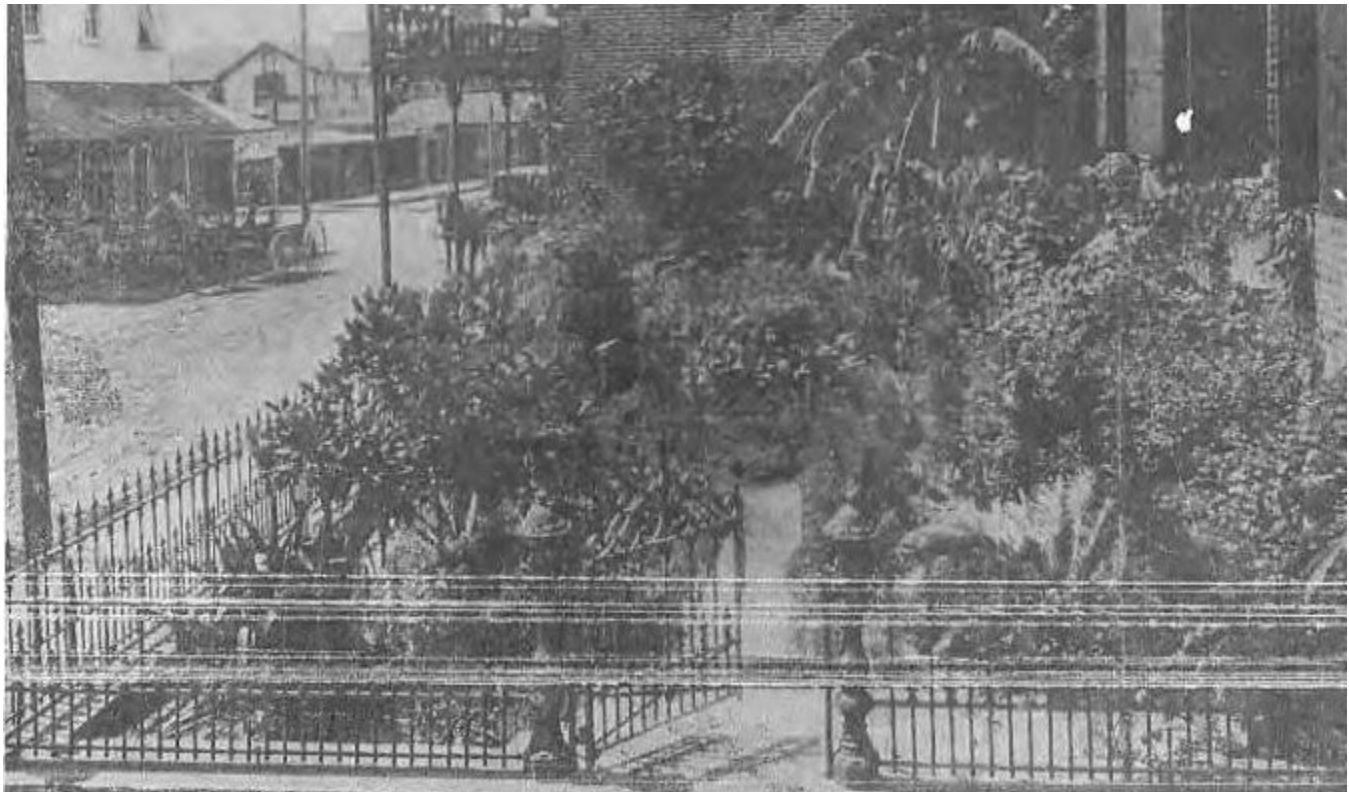




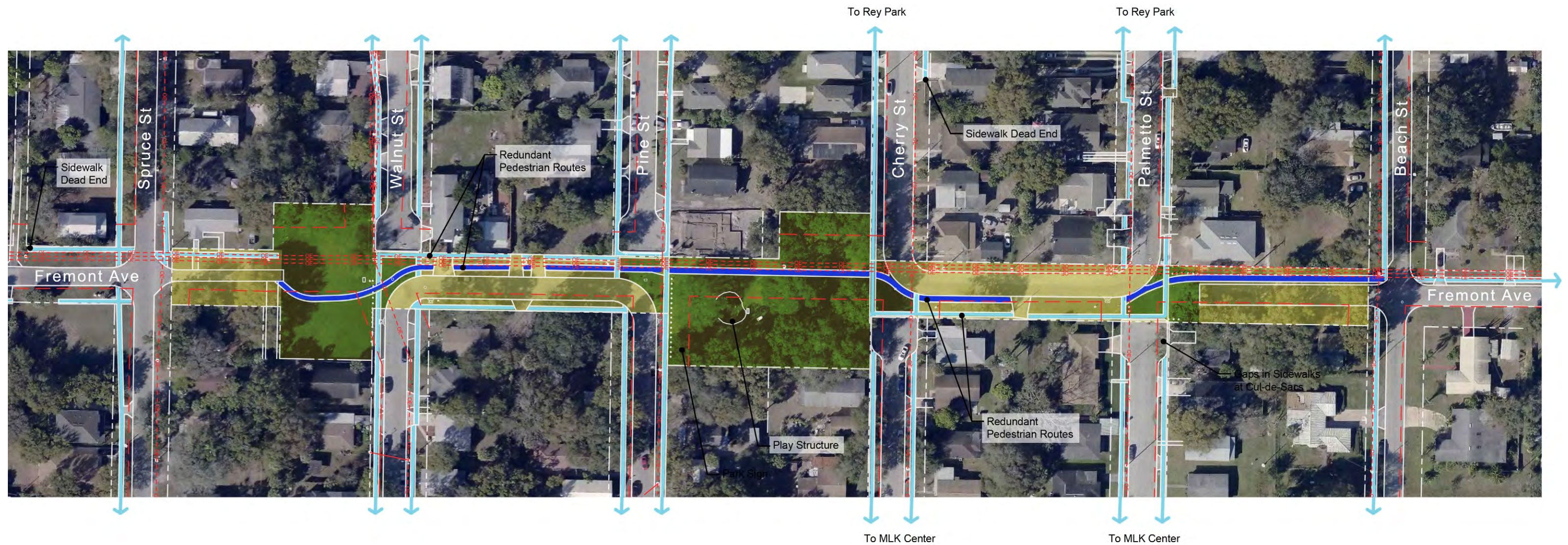












### LEGEND

- Existing Park Parcel (1978 Survey)
- Functional Park Area
- Concrete Sidewalk (5' Typical)
- Asphalt Trail (6' to 7' Width)
- Overhead Electrical Line
- Teco 30' Canopy Tree Clear Zone

### NOTES

1. The turnaround connectors and dead end access roads combined with overhead utilities limit opportunities for recreation or streetscape enhancements in these segments.
2. Small trees are allowed within the 30' Teco clear zone.
3. New pavement and structures should be located to preserve existing canopy trees to the extent possible.
4. Fremont Avenue is blocked by I-275 to the south. Main St and Columbus Dr may be eventual destinations for N/S travel, but Fremont Ave sidewalks and roads mostly serve local trips within the neighborhood.



## Fremont Linear Park Existing Conditions Diagram

