

Status, Potential and Prospects

Main Street & Howard Ave

STATUS

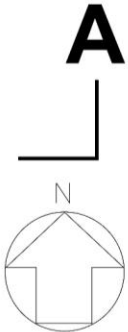
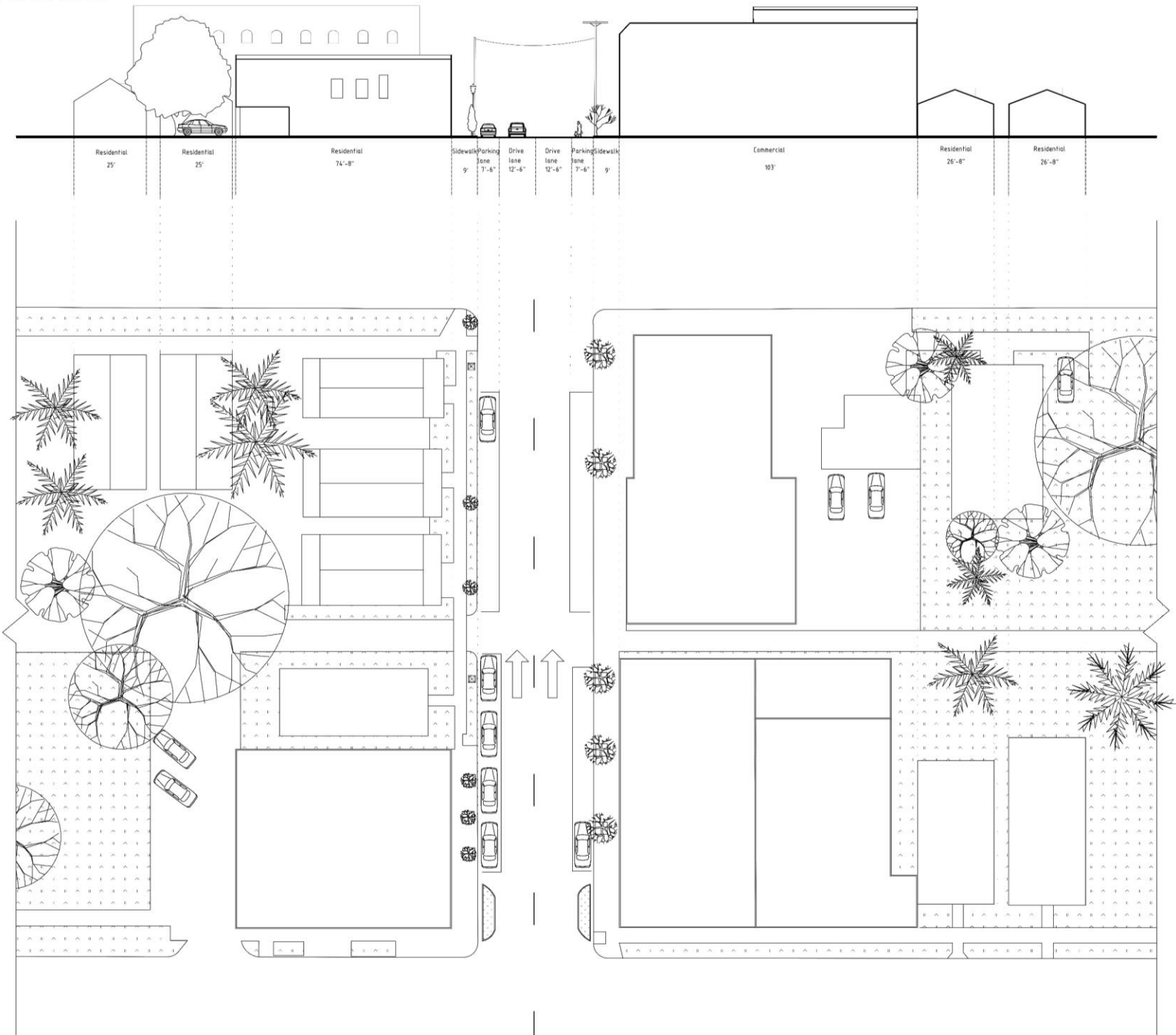
Main Street located in West Tampa, an area with a strong historical heritage. There are a large number of historic brick houses on both sides of the street.

In this area, many merchants have established many highly cultural shops or studios with the help of historical buildings. If the culture of this area can be used well, the area can be turned into a good walking area.



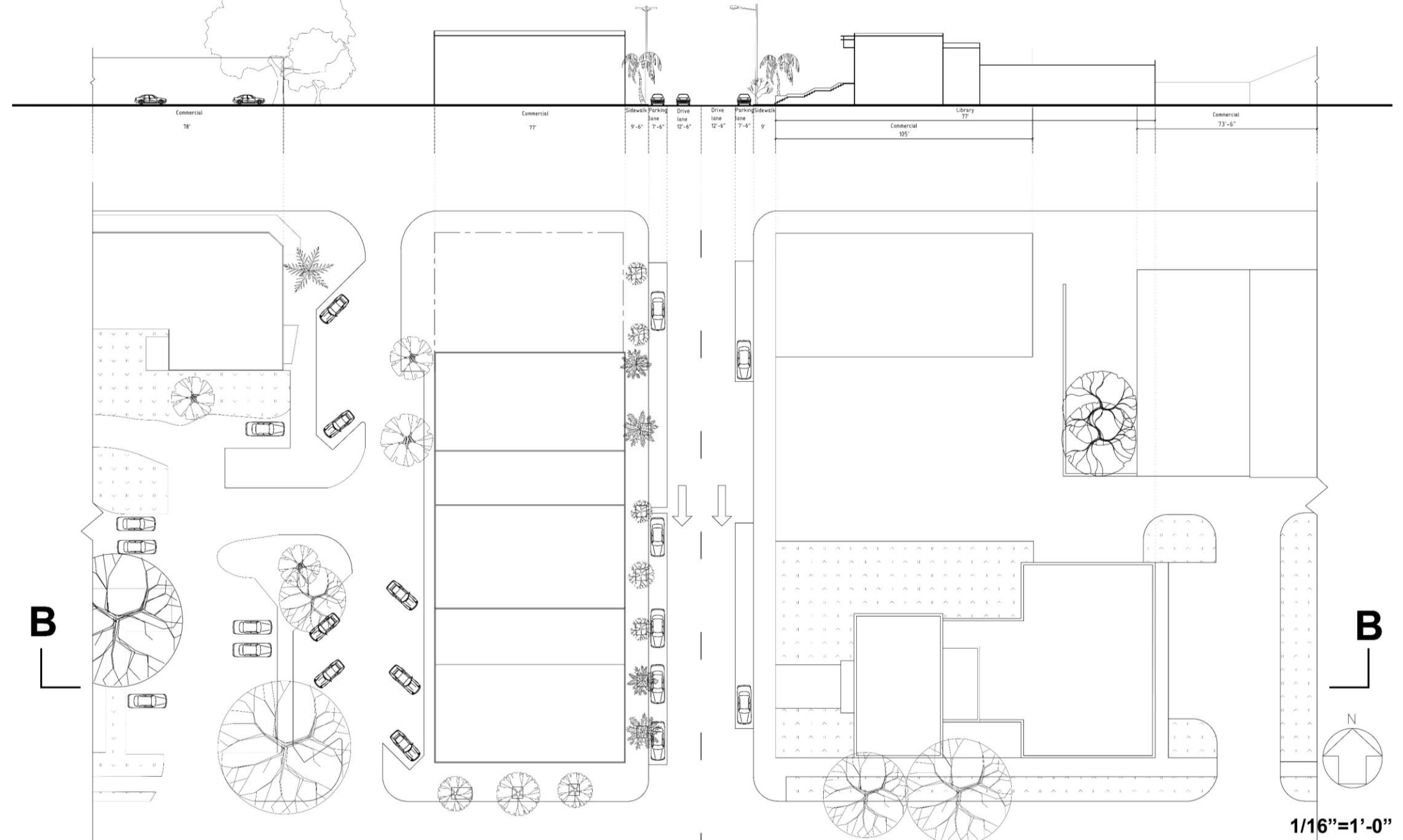
N HOWARD AVE A-A SECTION
SOUTH TO NORTH

A

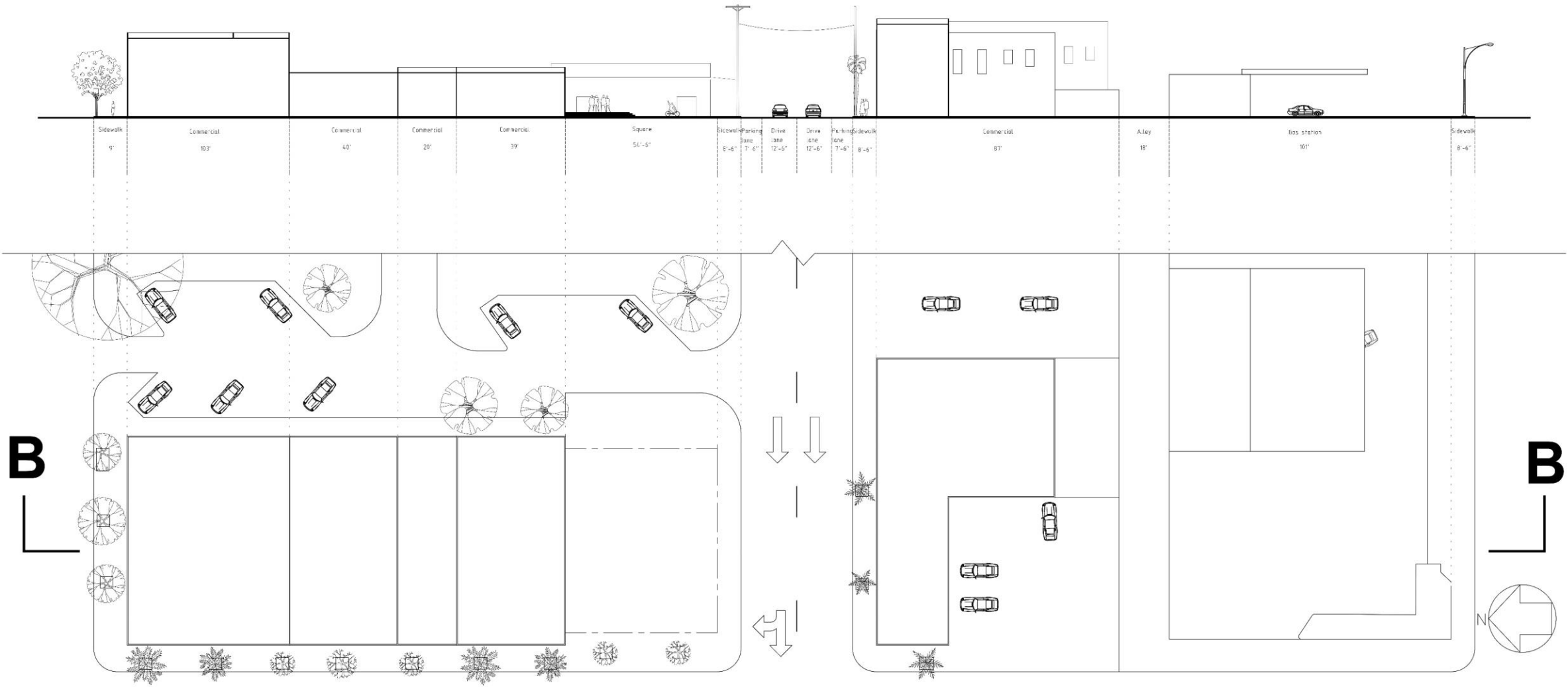


1/16"=1'-0"

**N HOWARD AVE B-B SECTION
NORTH TO SOUTH**

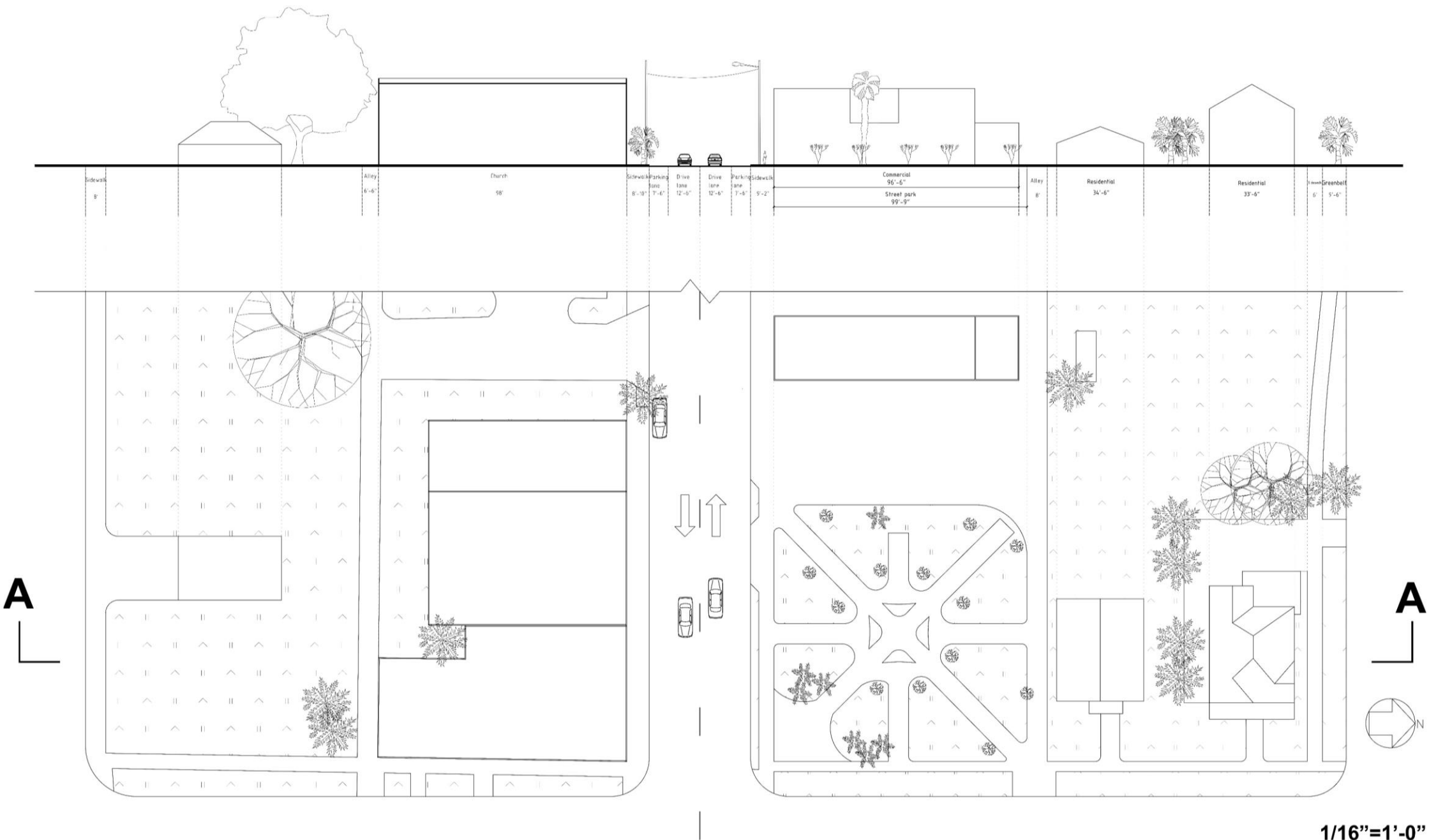


MAIN STREET B-B SECTION
WEST TO EAST



1/16"=1'-0"

MAIN STREET A-A SECTION
EAST TO WEST



Main Street and Howard Ave belong to the blocks that were built earlier. Therefore, many early designs cannot meet the current needs, which affects the walkability and user experience of the blocks.

The sidewalk on this section of Howard Ave is narrow. Trees are planted in some places, occupying about half the width of the sidewalk. Narrow sidewalks will affect the use of wheelchairs and strollers. Howard Ave is a one-way street and without signal lights. There are fewer intersections where vehicles may enter on the left and right sides.

PROBLEM

③ The buildings on both sides of the street do not have canopies, which will provide a lot of convenience for pedestrians.

⑦ The sidewalk is very narrow and half of the space is occupied by trees.

② The street trees are too small to provide shade for pedestrians.

④ Roadside parking is very convenient, but for the right lane, it may bring safety hazards to vehicles in motion.

⑥ Lack of steps. On rainy days, water may flow into the room.

⑤ One-way streets can reduce traffic burden and improve traffic flow and efficiency in narrow streets. On the other hand, one-way streets sometimes cause confusion for drivers when



Poor walkability



Plants occupy about half of the sidewalk. Wheelchairs and strollers can barely pass.



Most street trees cannot provide enough shade for pedestrians. In the hot weather of Tampa, walking in the sun for a long time can be very uncomfortable.

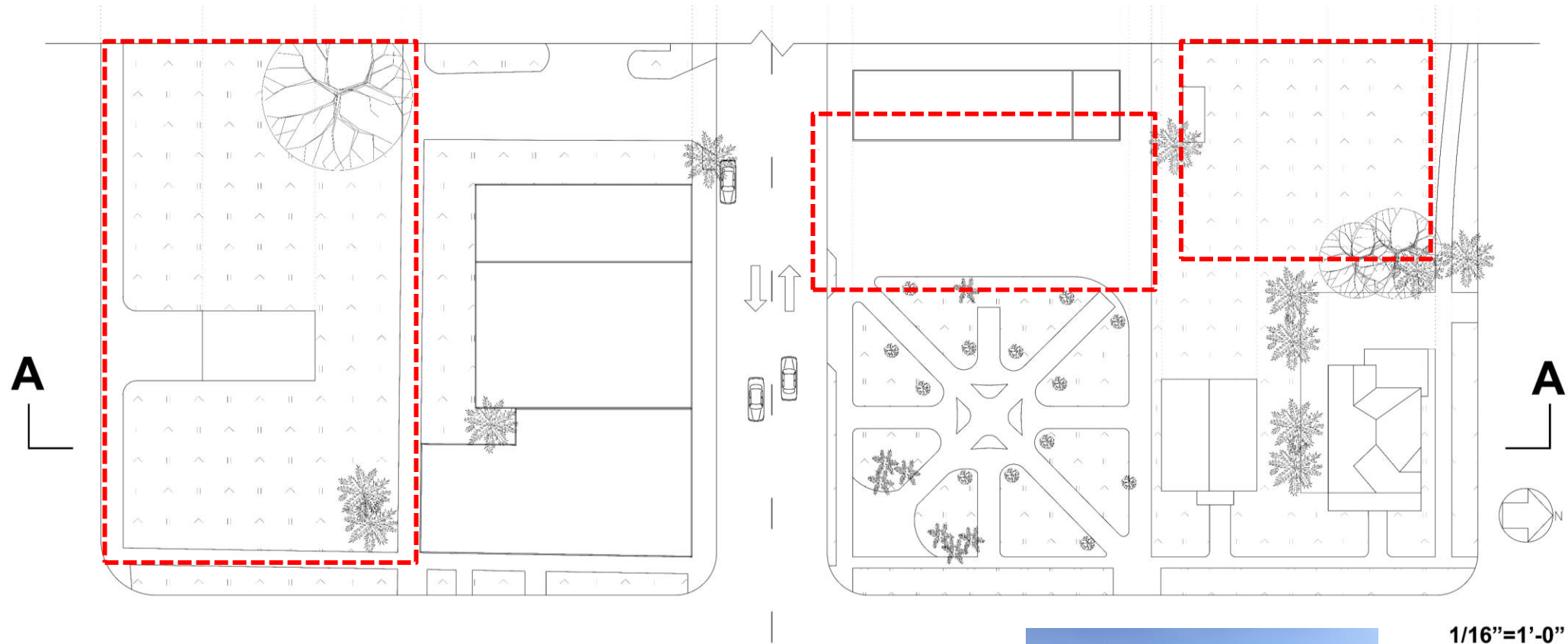


The low terrain in some places leads to serious water accumulation. Pedestrians must walk a long distance to get around stagnant water.



Accumulated garbage will not only make the environment worse, but also cause the spread of diseases. Pedestrians will have a bad walking experience when passing through this place, and there are potential health risks.

Low space utilization



There is a lot of unused space on Main Street. On the one hand, it causes land waste, on the other hand, too much open space will affect the experience of pedestrians when they pass by. At the same time, at night, the open area will make people passing by feel unsafe.



1/16"=1'-0"

Lack of bike lane



Both Howard Ave and Main Street are two-lane, with on-street parking spaces on both sides of the street, but both lack separate bicycle lanes. This poses a certain risk to the cyclist. This may also cause people do not want to ride bicycles to this area, thereby increasing the pressure on traffic and parking.

Lack of open space

This block lacks small public spaces such as outdoor seats and parklets. Although there is a corner plaza and a corner garden, due to insufficient greening, the utilization rate is low, and the public space is not functioning well.



Lack of landscape



The street trees on the roadside are mostly palm trees, which cannot provide good shade. In some places, there is no greening for a long distance.



In some places, despite the greenery, the trees are short and cannot give pedestrians a good walking experience.

POTENTIAL

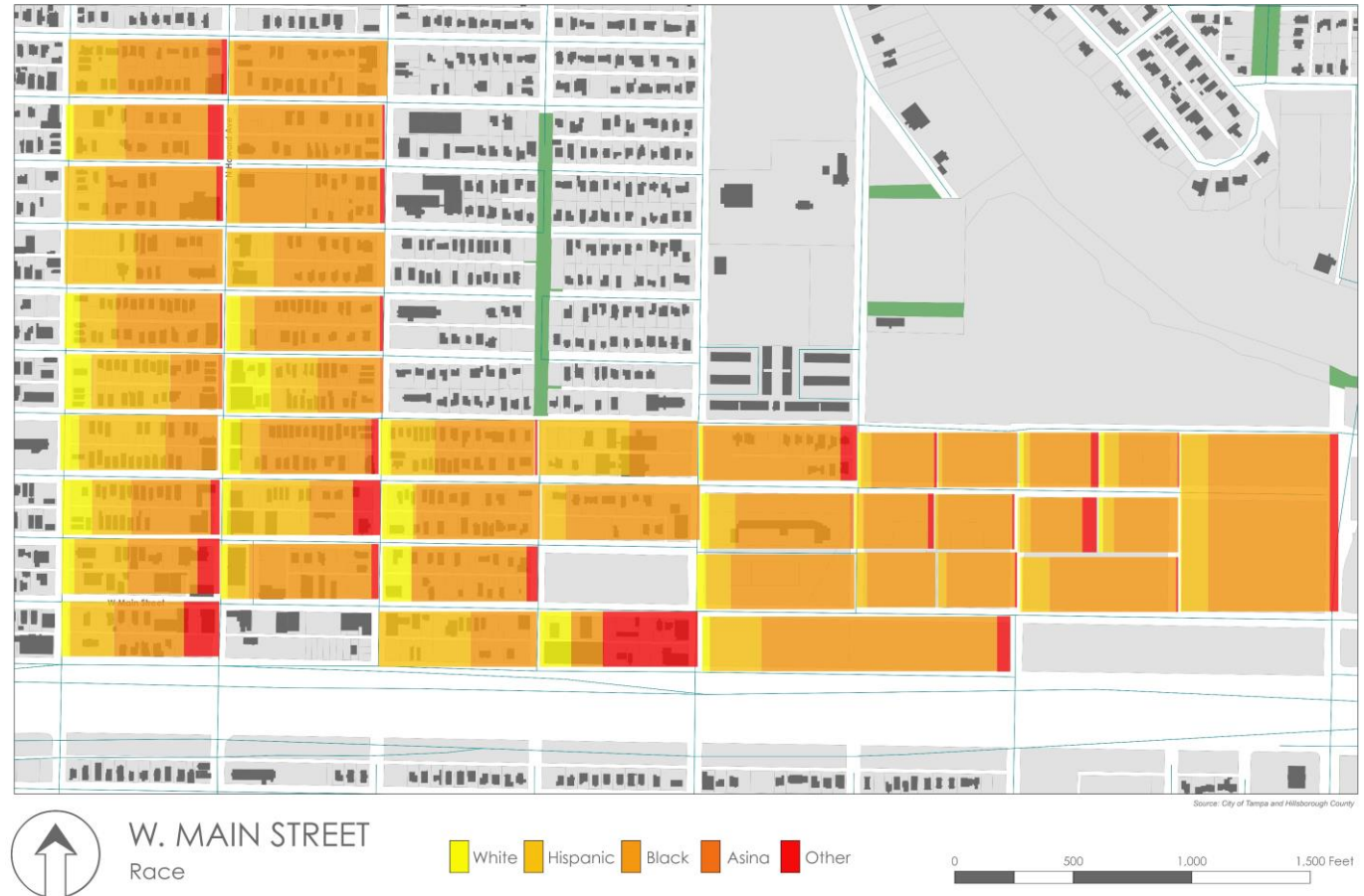
Main Street has a good historical and cultural foundation. People walking on the street can easily see historic buildings and graffiti that reflect local culture.

Culture can be used as a selling point of a region in many cases. It not only embodies the spirit and beliefs of the local people, but also attracts interested people to visit this place.



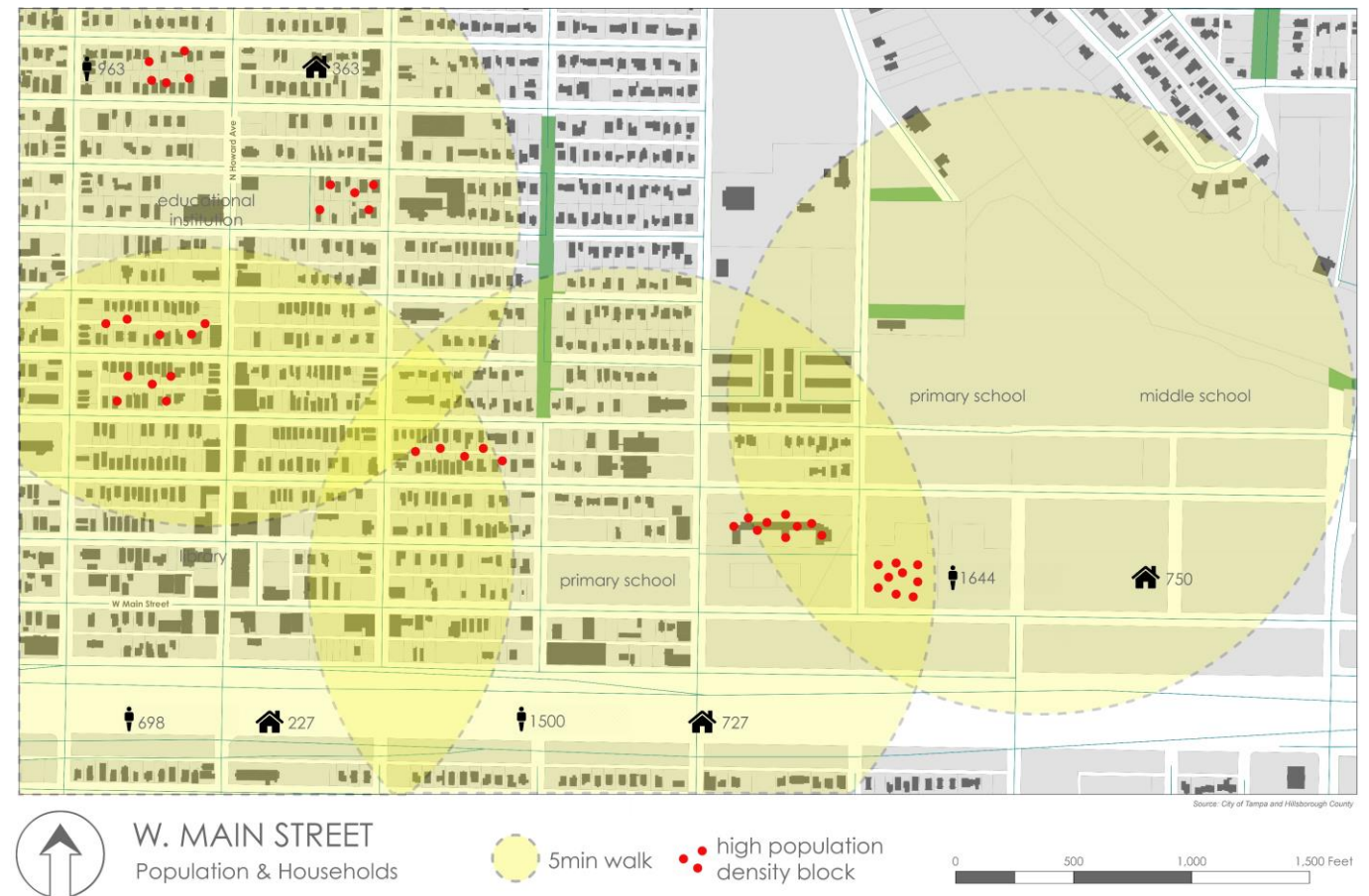
Group diversity

People of multiple races live in this area, which will bring about cultural exchanges and integration, thereby developing a more harmonious cultural environment. A good environment can attract more people to live in this place and drive the healthy development of this area.



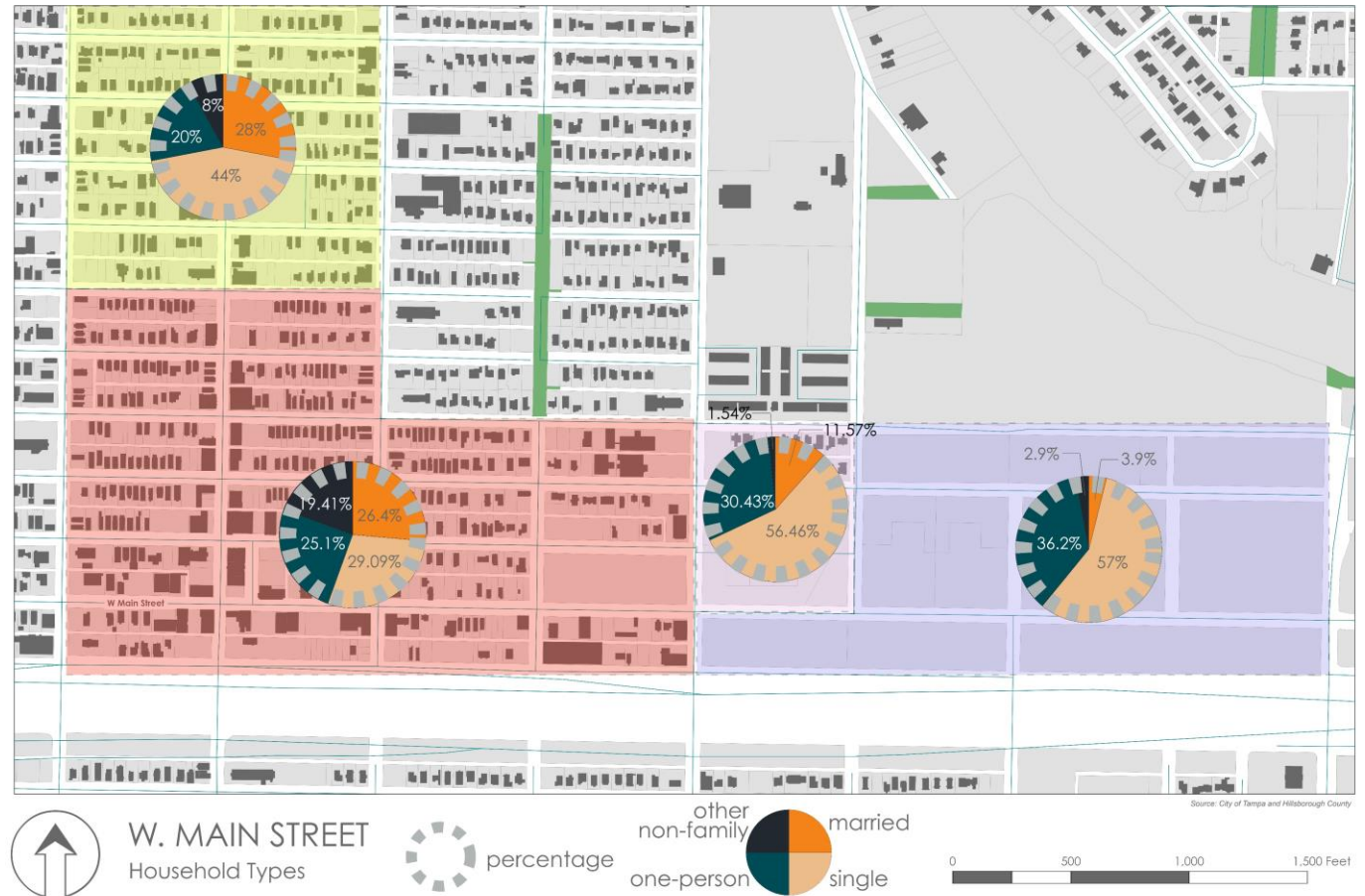
Functional diversity

The functions of this area basically meet people's life needs. Churches, schools, houses, gas stations and other places that people use frequently in their lives are available in this area. This will greatly enhance the convenience of residents' lives. Meeting people's needs as much as possible within a 5-minute walking distance is a key consideration in the design.



Demand diversity

Different people have different needs for the block, and it is difficult for designers to do everything. But when the needs of most people are met as much as possible, the block will enter a stage of healthy development.

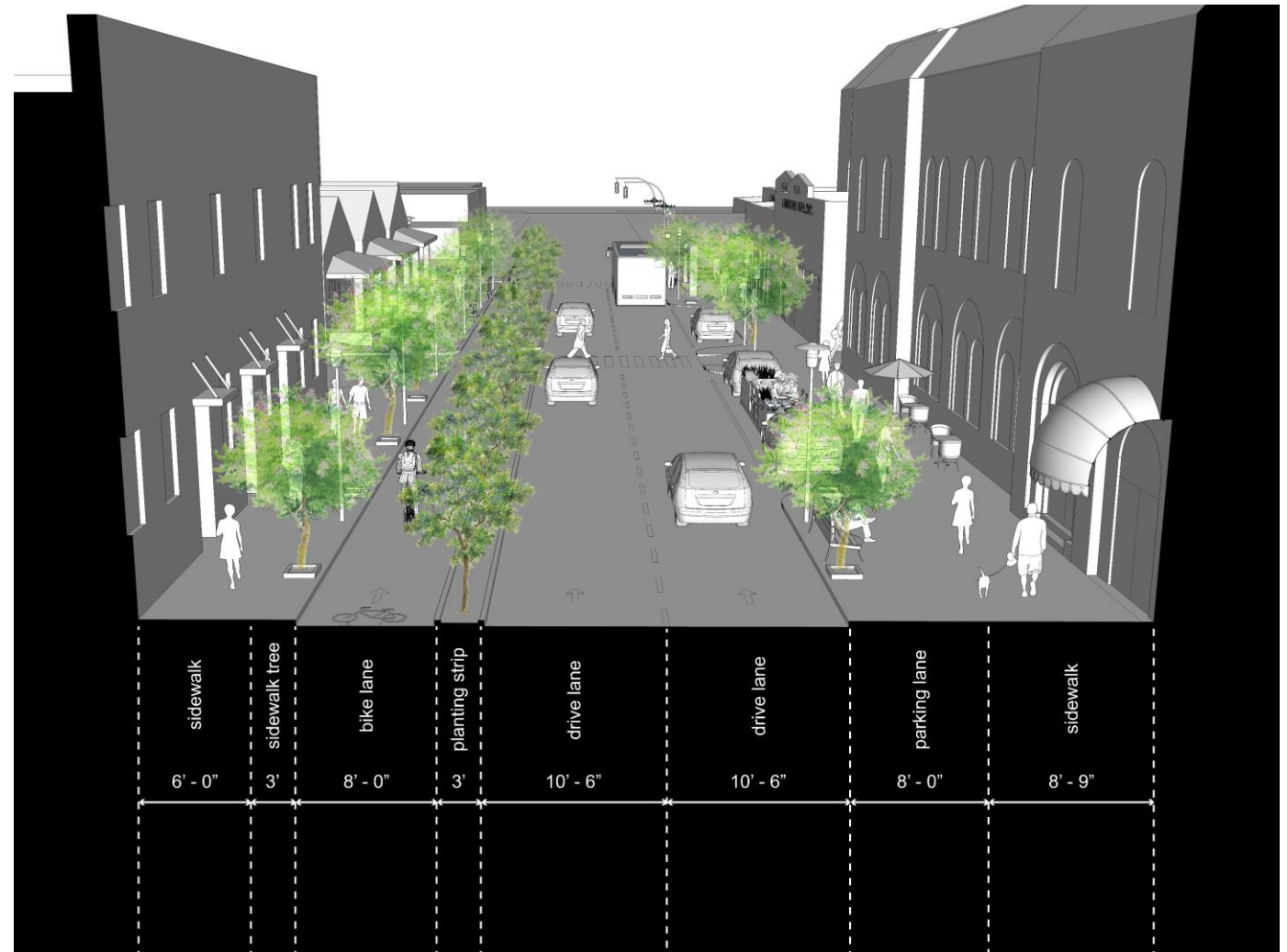


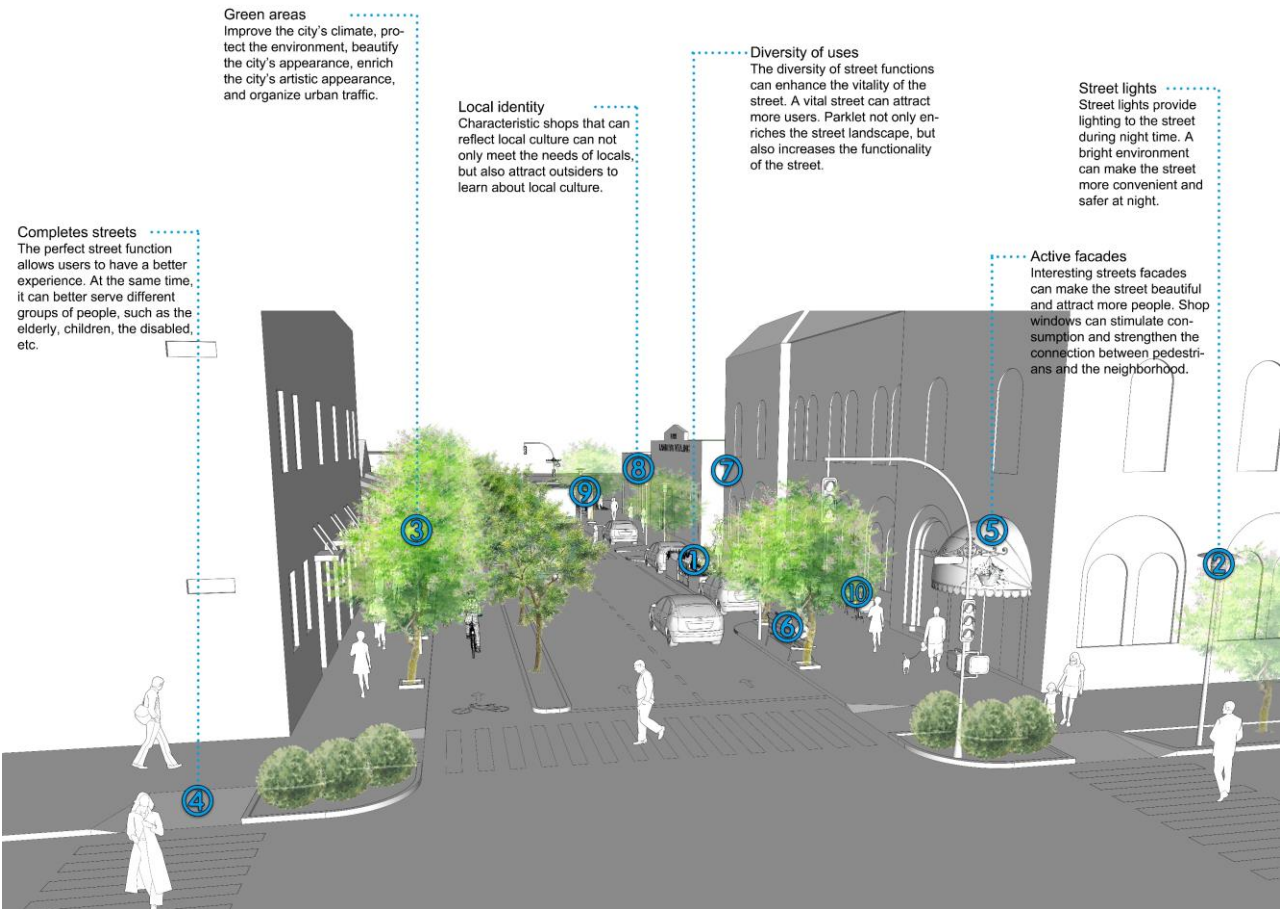
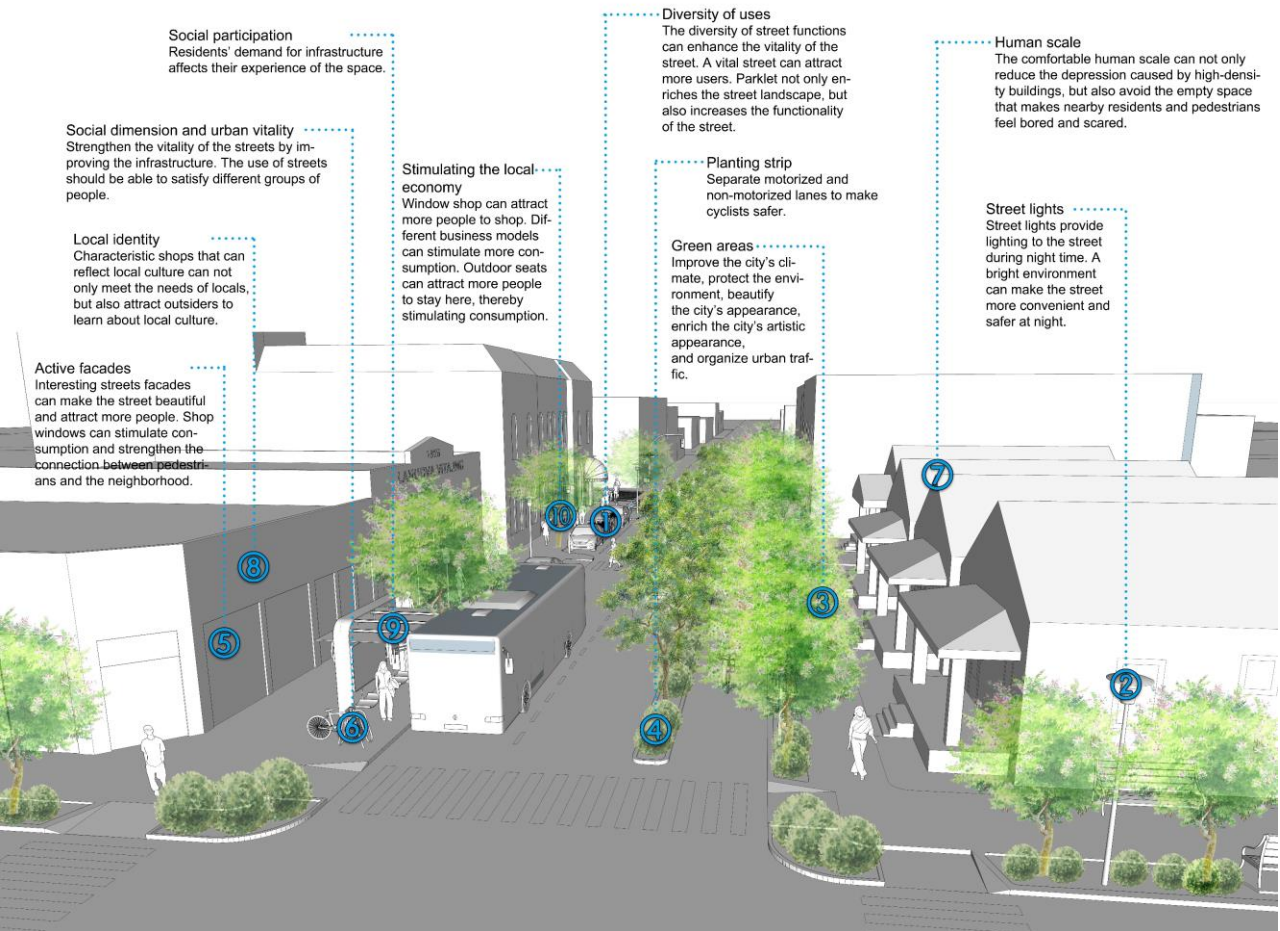
PROSPECT

Diversity of uses can provide users with multiple functions to meet multiple needs and enhance the vitality of the street.

More street trees can Improve the city's climate, protect the environment, beautify the city's appearance, enrich the city's artistic appearance, and organize urban traffic.

Complete street can provide users with the best experience. The perfect infrastructure not only provides convenience to users, but also ensures the safety of users.





Public space can strengthen the connection between people and the neighborhood. Good design can attract more people to use different functions of the street and increase the utilization rate of the street.





Social participation
Necessary design elements can better meet people's needs. For example, there are many elderly residents near the block. Curb extensions can provide a safer walking environment for people with limited mobility.

Street lights
Street lights provide lighting to the street during night time. A bright environment can make the street more convenient and safer at night.

Active facades
Interesting streets facades can make the street beautiful and attract more people. Shop windows can stimulate consumption and strengthen the connection between pedestrians and the neighborhood.

Social dimension and urban vitality
Providing people with more social occasions can strengthen the connection between people and the neighborhood and improve the utilization and vitality of the neighborhood.

Stimulating the local economy
Window shop can attract more people to shop. Different business models can stimulate more consumption. Outdoor seats can attract more people to stay here, thereby stimulating consumption.

Midblock crosswalk
Help people cross the street quickly and safely.

Green areas
Improve the city's climate, protect the environment, beautify the city's appearance, enrich the city's artistic appearance, and organize urban traffic.

Human scale
The comfortable human scale can not only reduce the depression caused by high-density buildings, but also avoid the empty space that makes nearby residents and pedestrians feel bored and scared.

Diversity of uses
The block contains a variety of fuses, such as street corner park, residential, commercial, etc. The diversity of uses can better attract people to come here.

Local identity
Set up something with local characteristics in the block, such as sculptures. It can increase the interest of the neighborhood and highlight the local culture.

