



City Center at Hanna Avenue Design-Build Project Project Information Session + Diversity Outreach

February 16, 2022

Agenda

- Our Commitment
- Who is DPR?
 - Team and Partners Introduction
 - Tampa Operations
- Project Overview
 - Design Build Process
 - Procurement Opportunities
 - Workforce Development
- Bidding Preparation
 - Schedule
 - Prequal Process
- Q&A Distribution





Our Commitment



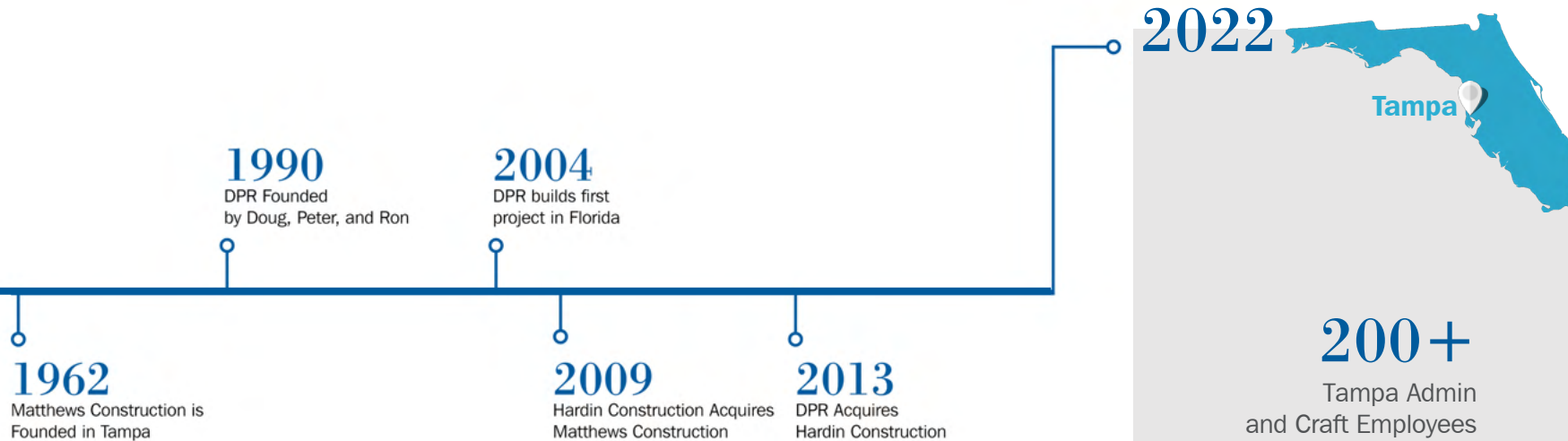
Meet the Team



Who is DPR?

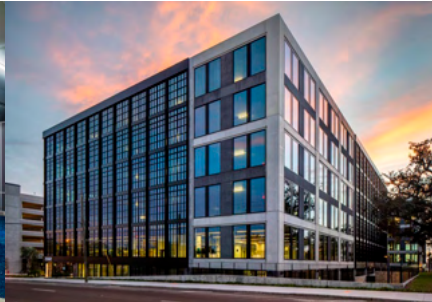
DPR Construction Overview

Tampa Operations



200+
Tampa Admin
and Craft Employees

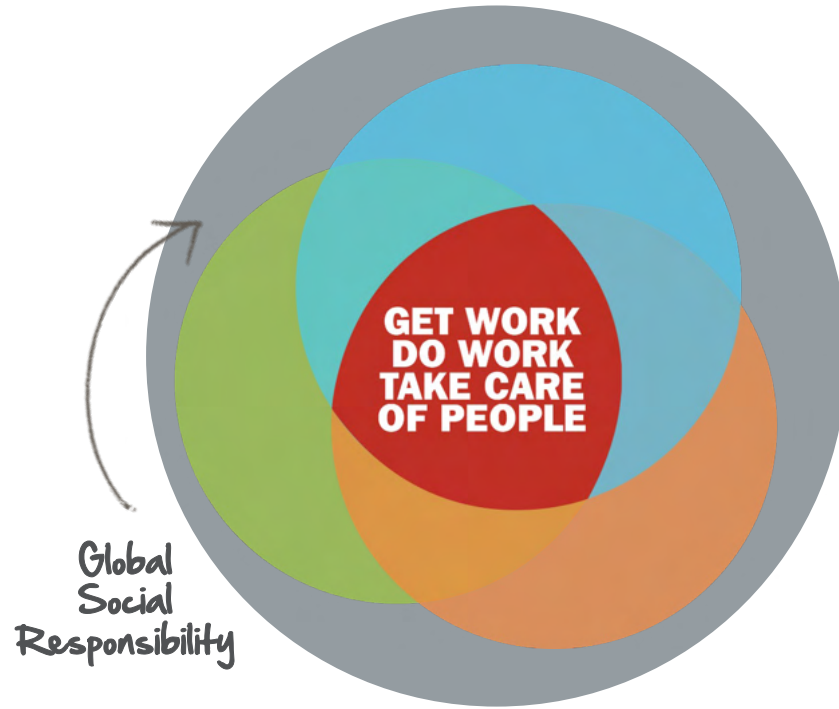
200+
Projects Completed in
the City of Tampa



Tampa Clients and Community Partners



Global Social Responsibility



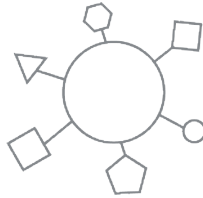
Global Social Responsibility (GSR)

THE FOUR PILLARS OF GSR



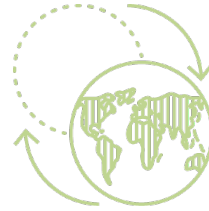
People

Creating a more diverse, equitable and inclusive internal work environment



Partners

Maximizing opportunities for diverse businesses



Planet

Being environmentally responsible and building sustainable, healthier places for the future



Philanthropy

Building possibilities for the under-resourced

Partners Pillar

Supplier Diversity

Mission: To be Most Admired

VISION FOR DEI AND SUPPLIER DIVERSITY

A **workforce** that **reflects the rich diversity of the communities** in which we live, work, serve and build.

A supply chain that **exemplifies inclusive engagement,** collaboration, and commerce **with diverse businesses.**

An environment where diverse trade partners, vendors, suppliers, and professional service providers, valued team members **can grow and thrive** alongside us.



DPR Construction Supplier Diversity Leaders

National



Patrice Haley

Northeast



Sharon Rheinhardt

Southeast



Lauren Hickman

Southwest



Erik Belmarez

The Hanna Avenue Plan

THREE KEY AREAS OF COMMUNITY ENGAGEMENT



Lauren Hickman
Supplier Diversity Lead



Thomas Huggins
Supplier Diversity and Workforce
Development Partner



Project-Specific Goals



- Diverse Business goals are Project-specific based on analysis of availability by the City of Tampa



- **BBE** = Black Business Enterprises
SLBE = Small Local Business Enterprises

20% BBE | 15% SLBE



- New City of Tampa Apprenticeship Ordinance is applicable

Project-Specific Goals

MAKE IT COUNT

City of Tampa First

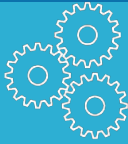
- Certified by the City of Tampa, OR
- If outside of the Tampa area, must provide the documentation you tried for trade partners in Tampa first.
- If within Florida, must be State of Florida certified.
- If outside Florida, must be Disadvantaged Business Enterprise certified.



Project-Specific Goals

WORKFORCE DEVELOPMENT

- Training program and report all training and hiring outcomes
- Hire Local: Trade partner and vendor level
- Meeting with Tier I/II partners



City Center at Hanna Avenue Design-Build Project

Who is Moving to Hanna Avenue?

PUBLIC CENTRIC SERVICES

DEVELOPMENT + GROWTH

HOUSING AND COMMUNITY DEVELOPMENT
CONSTRUCTION SERVICES CENTER
ADMINISTRATION
HISTORIC PRESERVATION & ARCHITECTURAL REVIEW
REAL ESTATE
DEVELOPMENT COORDINATION

PLANNING

WATER PERMITTING

NEIGHBORHOOD + COMMUNITY AFFAIRS

ARTS & CULTURAL AFFAIRS
COMMUNITY ENGAGEMENT & PARTNERSHIPS
EQUAL BUSINESS OPPORTUNITY
CUSTOMER EXPERIENCE
CODE ENFORCEMENT

WORKFORCE DEVELOPMENT

CULINARY TRAINING
INCUBATOR KITCHEN
TECHNOLOGY & ARTS CLASSROOM

OTHER SERVICES

TECHNOLOGY + INNOVATION

PURCHASING

WELLNESS CENTER

HUMAN RESOURCES

FACILITY MANAGEMENT

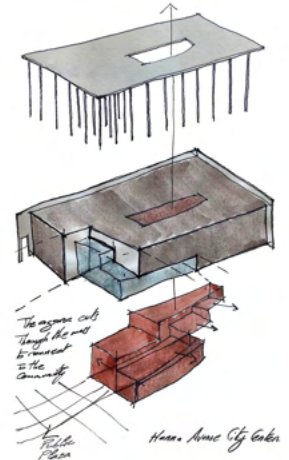
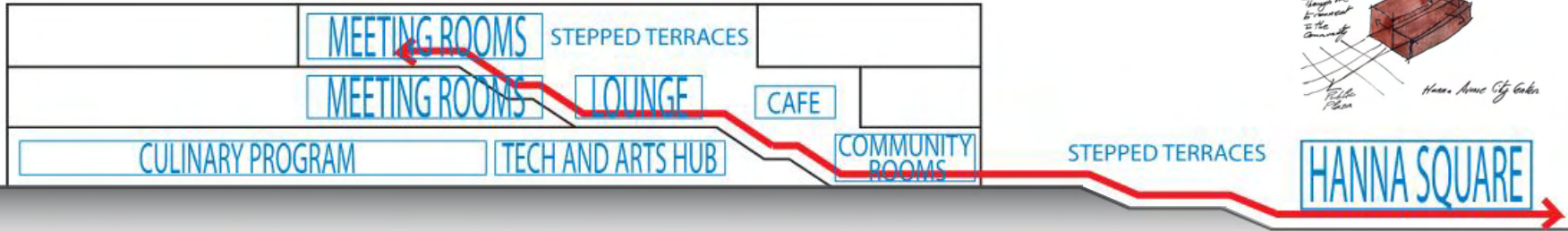
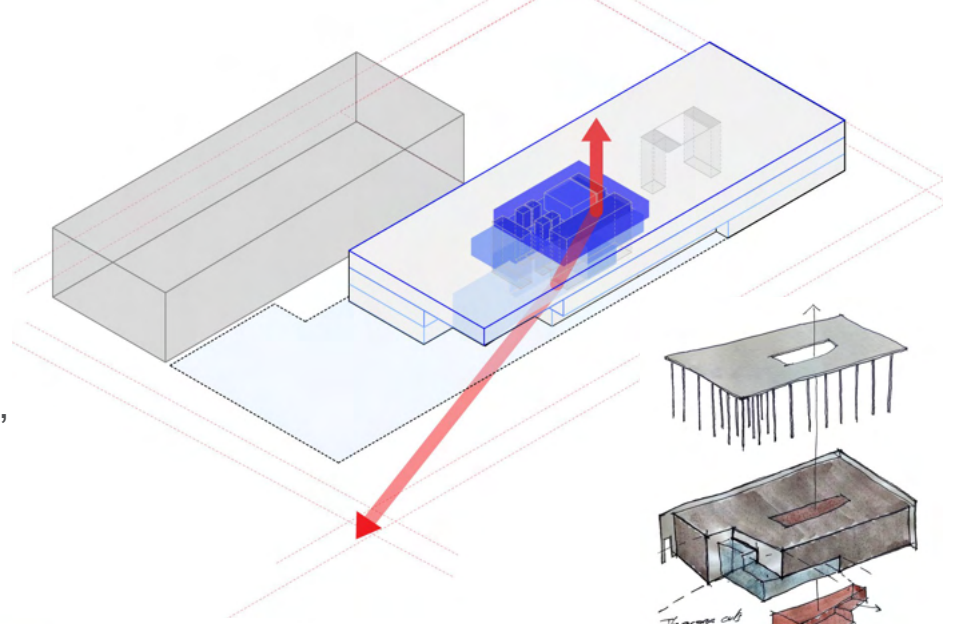
CENTRAL FLEET

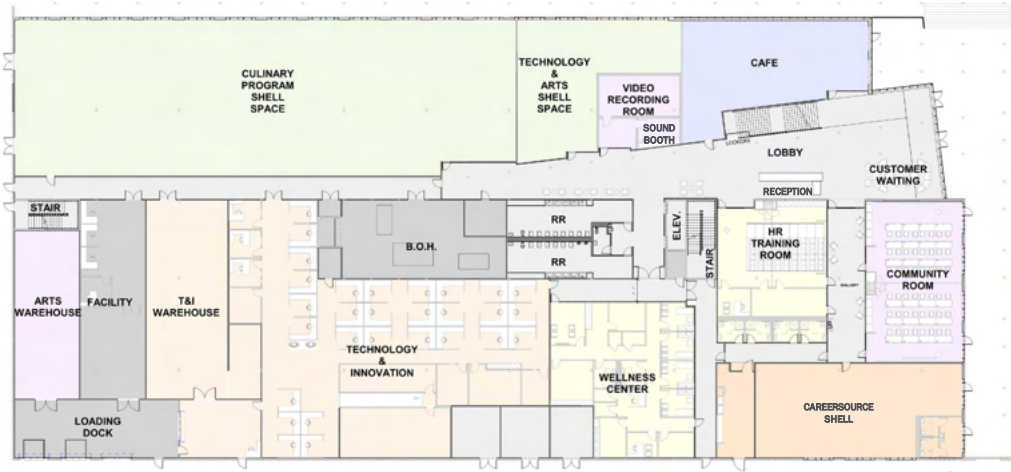
COMMUNITY CONNECTIVENESS	FLEXIBILITY + COLLABORATION	WELL BEING + SUSTAINABILITY	MOBILITY	INCUBATOR	GUIDING PRINCIPLES
<p>Enhance Community Interaction</p> <p>Enhance Community Experience</p> <p>Access to Housing</p> <p>Development Catalyst</p> <p>Outreach Program</p> <p>Art Program</p> <p>Community Spaces</p> <p>Continuity of Operations</p>	<p>Inter-departmental Connection</p> <p>Flexibility</p> <p>Multi-purpose Space</p> <p>Café</p> <p>Broadcasting + Interactive Technology</p> <p>Growth</p> <p>Flex Space</p> <p>Open Floorplan</p>	<p>Renewable Energy</p> <p>Raingarden</p> <p>Access to Natural Light</p> <p>Green Space</p> <p>Noise Mitigation</p> <p>Privacy / Quiet Moment</p> <p>Wellness Center</p> <p>Electric Vehicle Stations</p> <p>USGBC LEED Silver</p>	<p>Micro Mobility</p> <p>Electric Bikes</p> <p>Electric Scooters</p> <p>CSX Reach</p> <p>Pedestrian Connection</p> <p>Public Transportation</p> <p>Vehicular Connection</p>	<p>Technology + Arts</p> <p>Culinary Training</p> <p>Incubator Kitchen</p> <p>Career Source</p> <p>Visiting Artist Studio</p> <p>Creativity + Experimentation</p>	VALUES
<p>Strengthening Community-Centric Services</p> <p>Increasing Housing Affordability</p>		<p>Establishing Sustainability + Resilience</p>	<p>Improving Infrastructure + Mobility</p>	<p>Enhancing Workforce Development</p>	MAYOR'S STRATEGIC GOALS

Principles + Goals

Agora ['agərə]:

The **city center of civic, social, artistic, political, spiritual, and athletic** life in Ancient Greece.

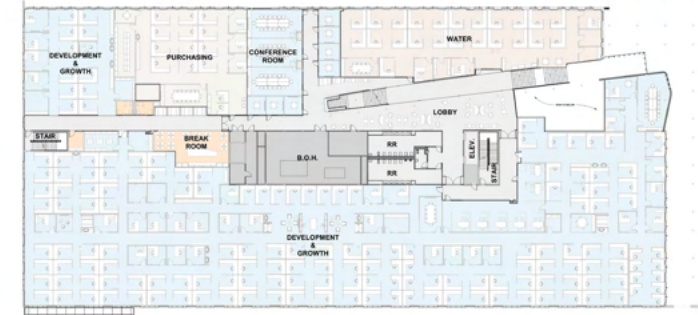




1



3



2

Building Organization + Programming



Building Entry Perspective



FLEISCHMANGARCIA
ARCHITECTURE | PLANNING | INTERIOR DESIGN



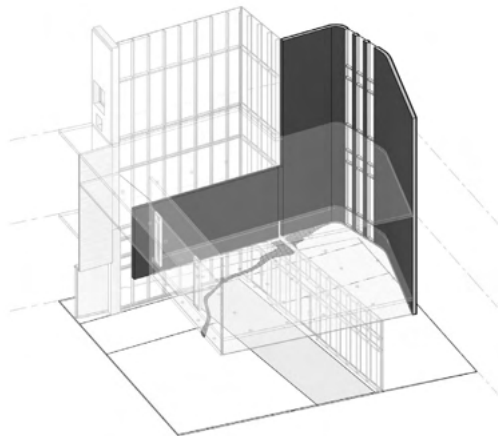
Hanna Square Perspective



FLEISCHMANGARCIA
ARCHITECTURE | PLANNING | INTERIORS



FLEISCHMANGARCIA
ARCHITECTURE | PLANNING | INTERIOR DESIGN



Entry



FLEISHMANGARCIA
ARCHITECTURE | PLANNING | INTERIOR DESIGN



Hanna Square Perspective



FLEISCHMANGARCIA
ARCHITECTURE | PLANNING | INTERIOR DESIGN



FLEISCHMANGARCIA
ARCHITECTURE | PLANNING | INTERIORS

Hanna Square Perspective



FLEISCHMANGARCIA
ARCHITECTURE | PLANNING | INTERIOR DESIGN



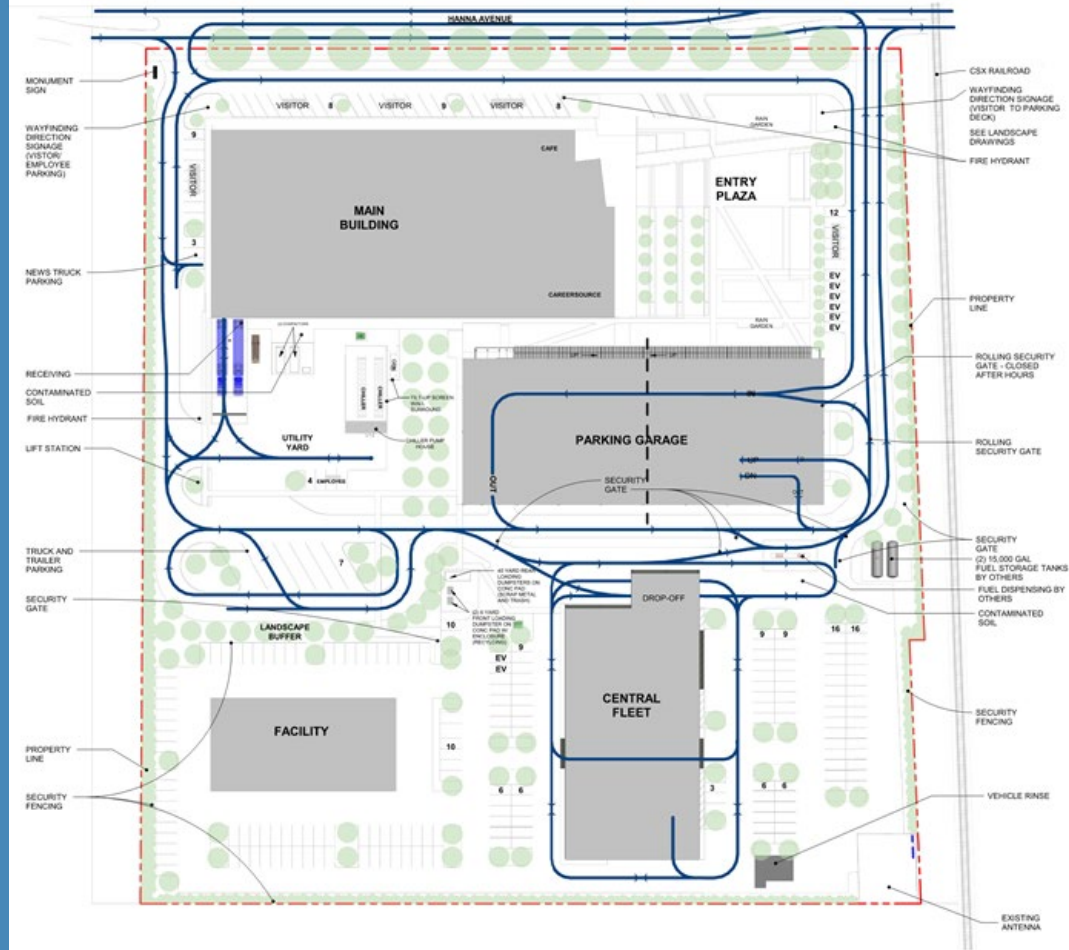
Building Lobby Perspective



Community centric spaces

Project Overview

- Site – 11.3 Acres
- Main Bldg. – 160,531 sf
- Central Fleet – 30,581 sf
- Facilities Bldg. – 22,834 sf
- Parking Garage - 500 Spaces
- LEED Silver Design
- Start: February 2022
- Completion: Summer 2023



Trade Partner Opportunities

- Construction Material Testing
- Cleaning
- Art Infrastructure
- Material Hoist
- Concrete
- Masonry
- Structural and Misc. Steel
- Decorative Metal
- Architectural Woodwork
- Rough Carpentry
- Waterproofing
- Roofing
- Fireproofing
- Stucco
- Doors, Frames, and Hardware
- Storefronts, Curtain Wall and Glazing
- Interior Glazing
- Skylights
- Drywall
- Acoustic Ceilings
- Flooring
- Access Flooring
- Painting and Coating
- Decorative Plaster
- Interiors
- Precast Stairs
- Specialties
- Metal Canopies
- Operable Partitions
- Signage
- Loading Dock Equipment
- Residential Equipment
- Vehicle Service Equipment
- Parking Control Equipment
- Window Treatments
- Entrance Mats
- FF&E Allowance
- Pre-Engineered Structures
- Facilities Building Allowance Turnkey
- Fire Suppression
- Plumbing
- HVAC
- Electrical
- Solar
- Sitework
- Dewatering
- Deep Foundations
- Soil Remediation
- Fences and Gates
- Hardscape
- Landscaping
- Garage Screening
- Pavement Marking and Signage
- Greenwalls

\$20M

Targeted value being
contracted to BBE

\$15M

Targeted value being
contracted to SLBE

Milestones

2021

Sep

Oct

Nov

Dec

2022

Jan

Feb

Mar

April

May

Jun

Jul

SITE AND MAIN BUILDING CORE AND SHELL

Design Sep 2021

Bidding Nov 2021

Prequalification | Tier II Partnering

Buyout & Award Feb 2022

Construction Start Jan 2022

PARKING GARAGE

Design Jan 2022

Bidding Feb 2022

Prequalification | Tier II Partnering

Buyout & Award Apr 2022

Construction Start May 2022

Milestones

2022

Jan

Feb

Mar

April

May

Jun

Jul

Aug

Sep

Oct

CENTRAL FLEET

Design Feb 2022

Bidding Mar 2022

Prequalification | Tier II Partnering

Buyout & Award May 2022

Construction Start Jun 2022

MAIN BUILDING INTERIORS

Design Mar 2022

Bidding Apr 2022

Prequalification | Tier II Partnering

Buyout & Award Jun 2022

Construction Start Oct 2022

FACILITIES BUILDING

Design Apr 2022

Bidding May 2022

Prequalification | Tier II Partnering

Buyout & Award Jul 2022

Construction Start Oct 2022

Prequalification

How to bid on the project?

Why is Prequalification Important?

EVALUATED INFORMATION:



✓ Relevant Experience and Project Understanding



✓ Safety Performance



✓ Current Workload Availability



✓ Stable Financial Status



✓ Business Classification

How to Prequalify



GETTING STARTED...

Email your W9 to Cris Monteaux
at crism@dpr.com

Access to the Prequalification Portal,
detailed instructions, and sample
questionnaire will be provided.

Questions?

Cris Monteaux – crism@dpr.com (Central FL)

Prequal Department - Phoenix, AZ

What's Next?

NEXT 30 - 60 DAYS

- **Community Day**

Location: Hanna Ave Job Site

- **Prequal Workshop**

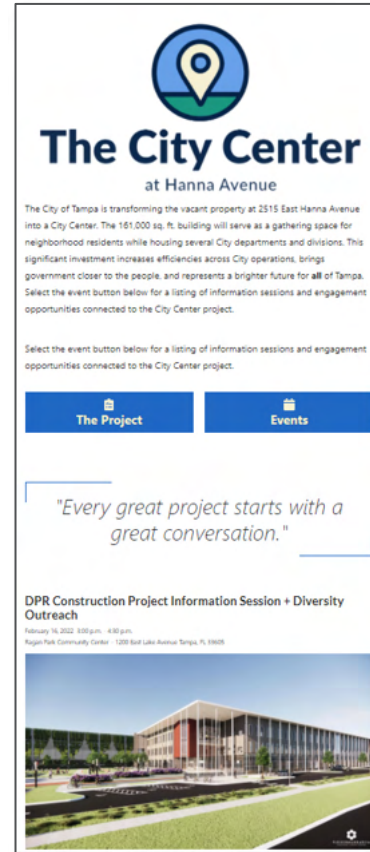
Location: DPR Office

- **Trade Partner Outreach Session**

Tentative location: Rogers Park Golf Course and Virtual

- **Virtual Trade Partner Outreach Session**

Location: Virtual on Zoom



The screenshot shows a webpage for 'The City Center at Hanna Avenue'. At the top is a logo featuring a blue circle with a white location pin and a green base. Below the logo, the title 'The City Center' is in a large, bold, dark blue font, with 'at Hanna Avenue' in a smaller font underneath. A paragraph of text describes the project: 'The City of Tampa is transforming the vacant property at 2515 East Hanna Avenue into a City Center. The 161,000 sq. ft. building will serve as a gathering space for neighborhood residents while housing several City departments and divisions. This significant investment increases efficiencies across City operations, brings government closer to the people, and represents a brighter future for all of Tampa. Select the event button below for a listing of information sessions and engagement opportunities connected to the City Center project.' Below this text are two blue buttons with white icons and text: 'The Project' (with a document icon) and 'Events' (with a calendar icon). A quote in a light blue box reads: 'Every great project starts with a great conversation.' Below the quote, the text 'DPR Construction Project Information Session + Diversity Outreach' is displayed, followed by the date and time 'February 16, 2022 10:00 a.m. - 4:00 p.m.' and the location 'Rogers Park Community Center - 1200 East Lake Avenue, Tampa, FL 33605'. At the bottom is a photograph of a modern, multi-story building with a glass facade and a green lawn in front.

The City Center
at Hanna Avenue


The City of Tampa is transforming the vacant property at 2515 East Hanna Avenue into a City Center. The 161,000 sq. ft. building will serve as a gathering space for neighborhood residents while housing several City departments and divisions. This significant investment increases efficiencies across City operations, brings government closer to the people, and represents a brighter future for all of Tampa. Select the event button below for a listing of information sessions and engagement opportunities connected to the City Center project.

Select the event button below for a listing of information sessions and engagement opportunities connected to the City Center project.

The Project **Events**

"Every great project starts with a great conversation."

DPR Construction Project Information Session + Diversity Outreach
February 16, 2022 10:00 a.m. - 4:00 p.m.
Rogers Park Community Center - 1200 East Lake Avenue, Tampa, FL 33605



Contact Us!

HannaAveProject@dpr.com



We Exist to Build Great Things.

