

# WELCOME

## **Tampa Palms Boulevard Complete Streets**

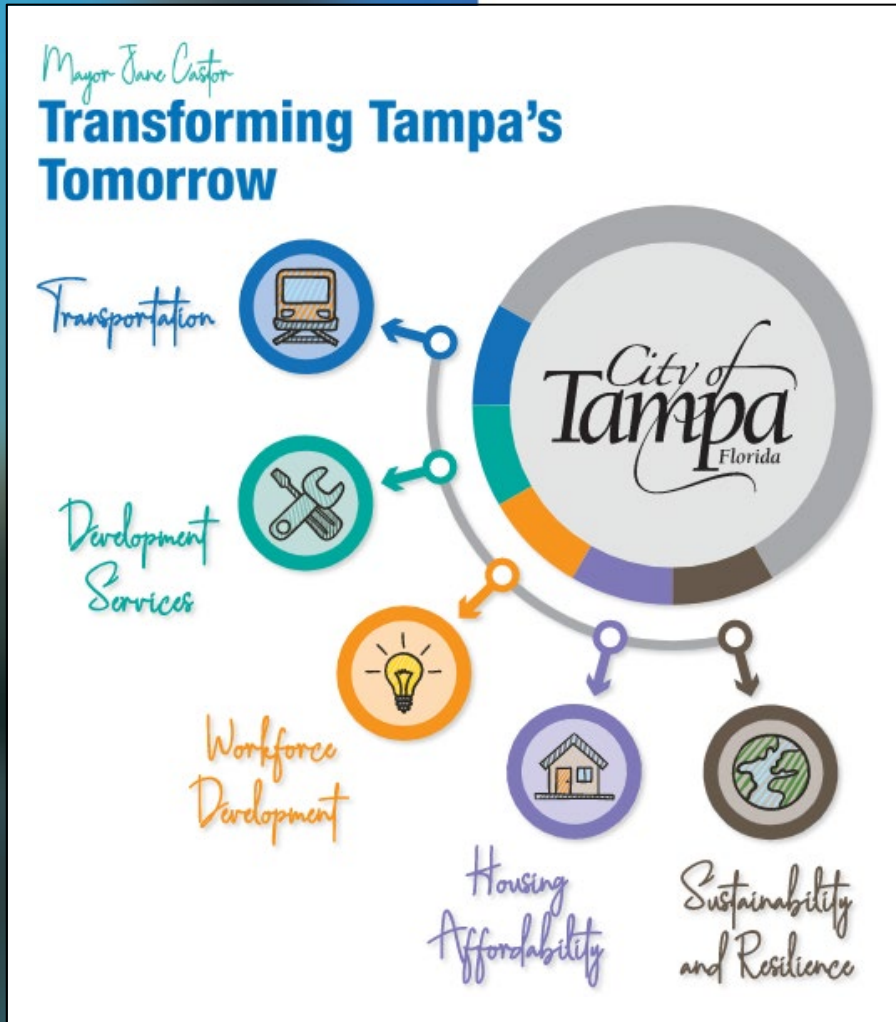
**From Bruce B. Downs Blvd. to Bruce B. Downs Blvd – Southern Loop**

**Tuesday, July 12 2022**

**Cal Hardie, P.E., Capital Project Manager**



# Mayor Castor's T3 Initiative



1. Implement Strategic Transit Projects.
2. Reimagine Trails and Greenways as Viable Transportation Options.
3. Adopt Vision Zero as a Citywide Policy.
4. Reinvent Urban Parking and Mobility.
5. Enhance Neighborhood Engagement.

**VISION**  
**ZERO**  
T A M P A

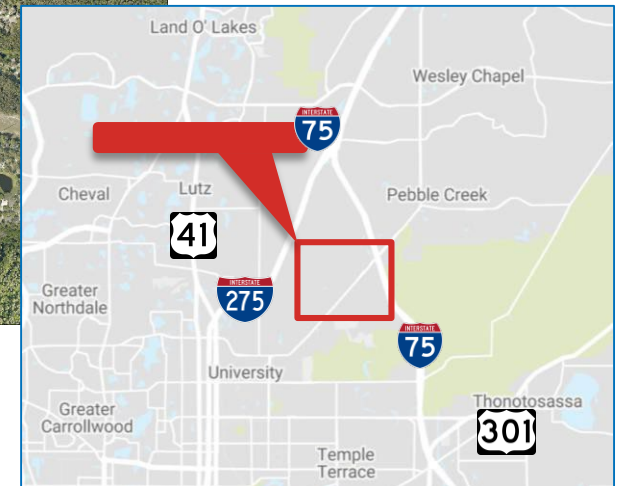
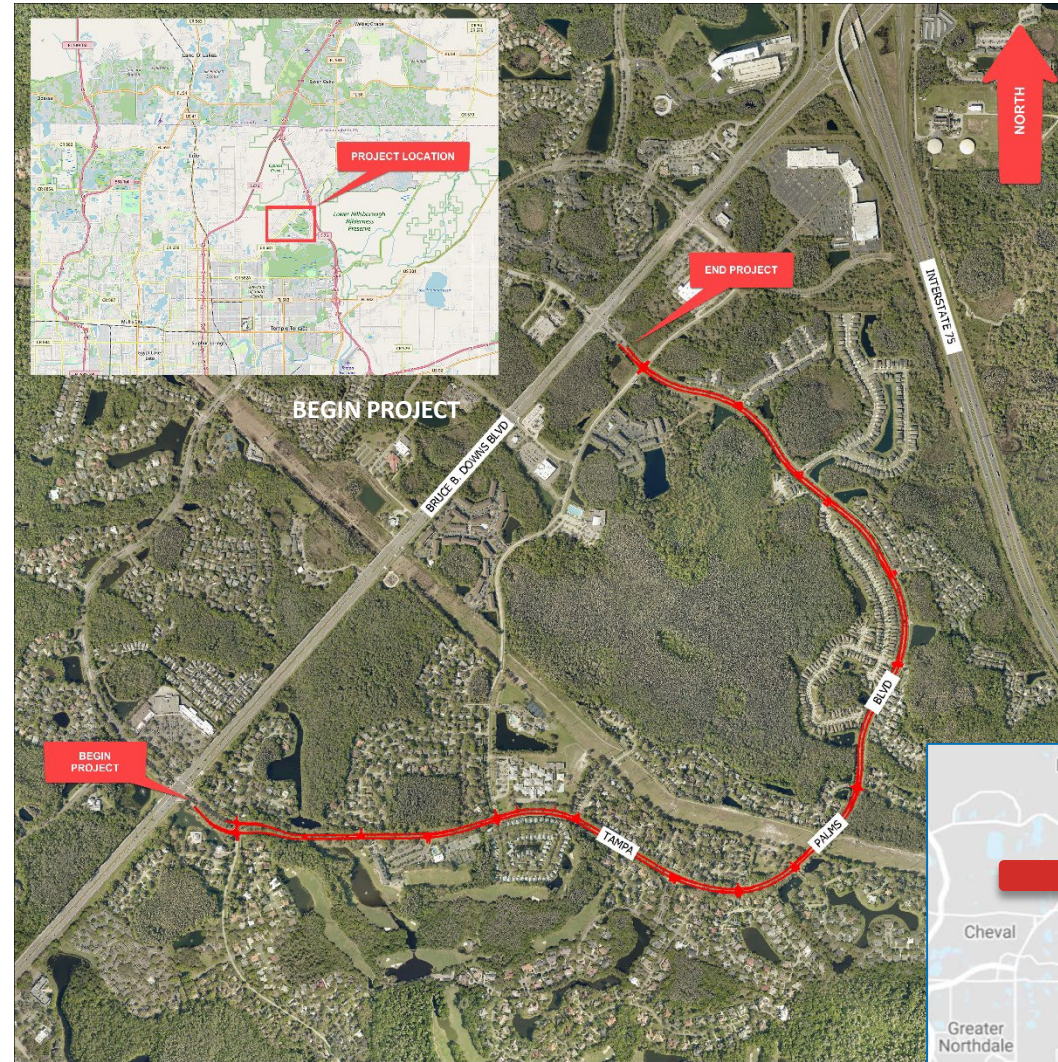


# 1. Project Overview



# Project Location

The project location is  
Tampa Palms Boulevard From  
Bruce B. Downs Blvd. to Bruce  
B. Downs Blvd (South Loop)





## NEIGHBORHOOD CONCERNS

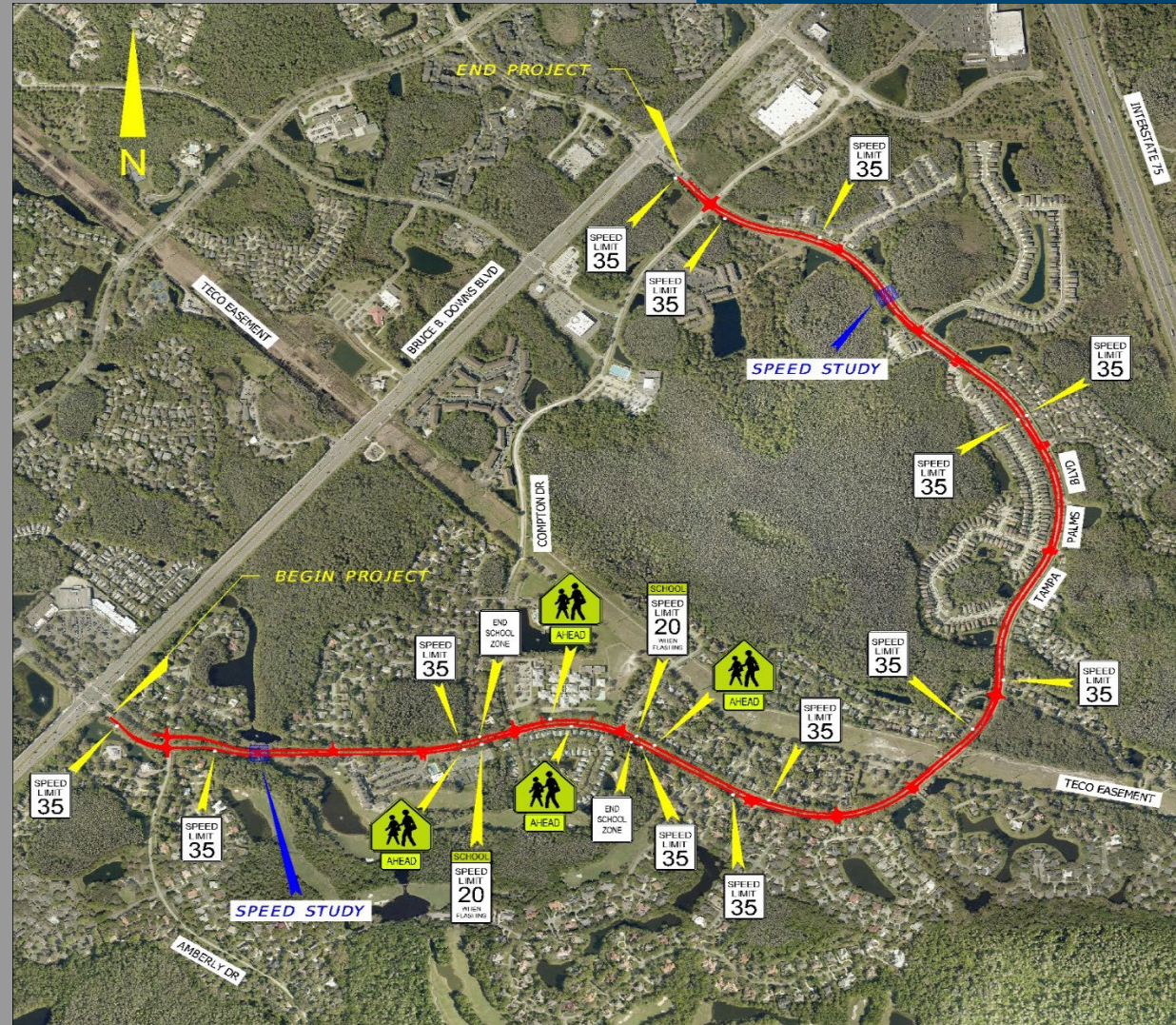
# What problems are we trying to solve?

- Speeding & Traffic Calming
- Intersection Safety
- Pedestrian Access
- School Pick-up and Drop-off
- Poor Pavement Conditions



## Excessive speeding

- 35 - 40 mph existing speed limit
- 47 mph average speeds
- 43 mph average speeds within school zones





## 2. Complete Streets Improvements

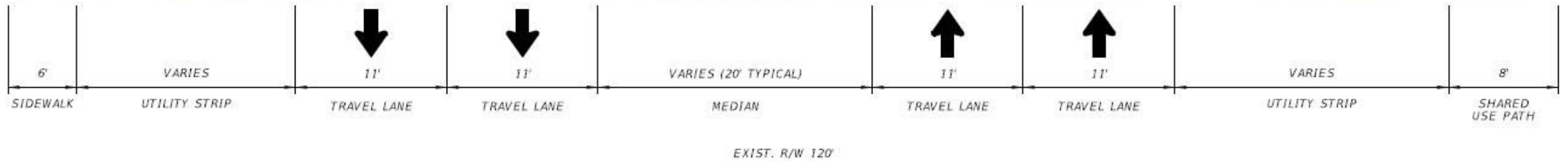
# Safety Enhancements

**Tampa Palms Boulevard SAPM Project** will provide safety enhancements and traffic calming through techniques that could include:

- Travel lanes will be narrowed to 10'
- Add 2' striped buffer on outside of each lane
- Adding enhanced crossings
- Shared lane markings added to the outside lane
- Posted speed will be posted 35 mph throughout the corridor



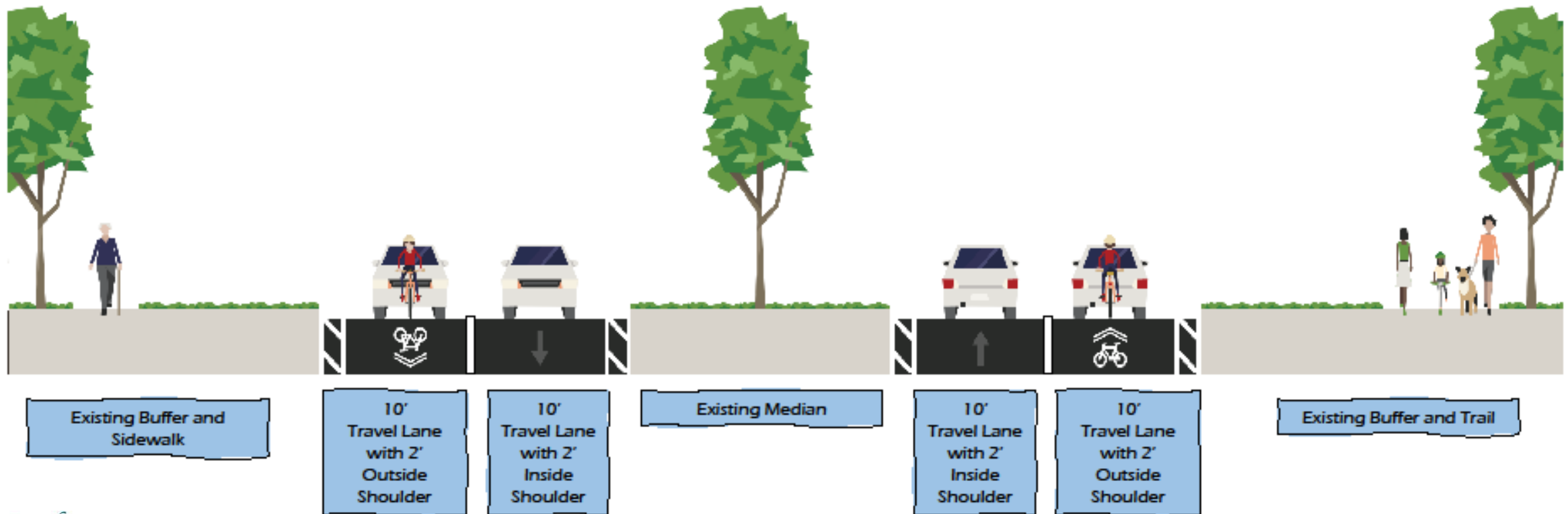
# Existing Typical Section



# Proposed Typical Section



Tampa Palms Blvd. SAPM PROJECT

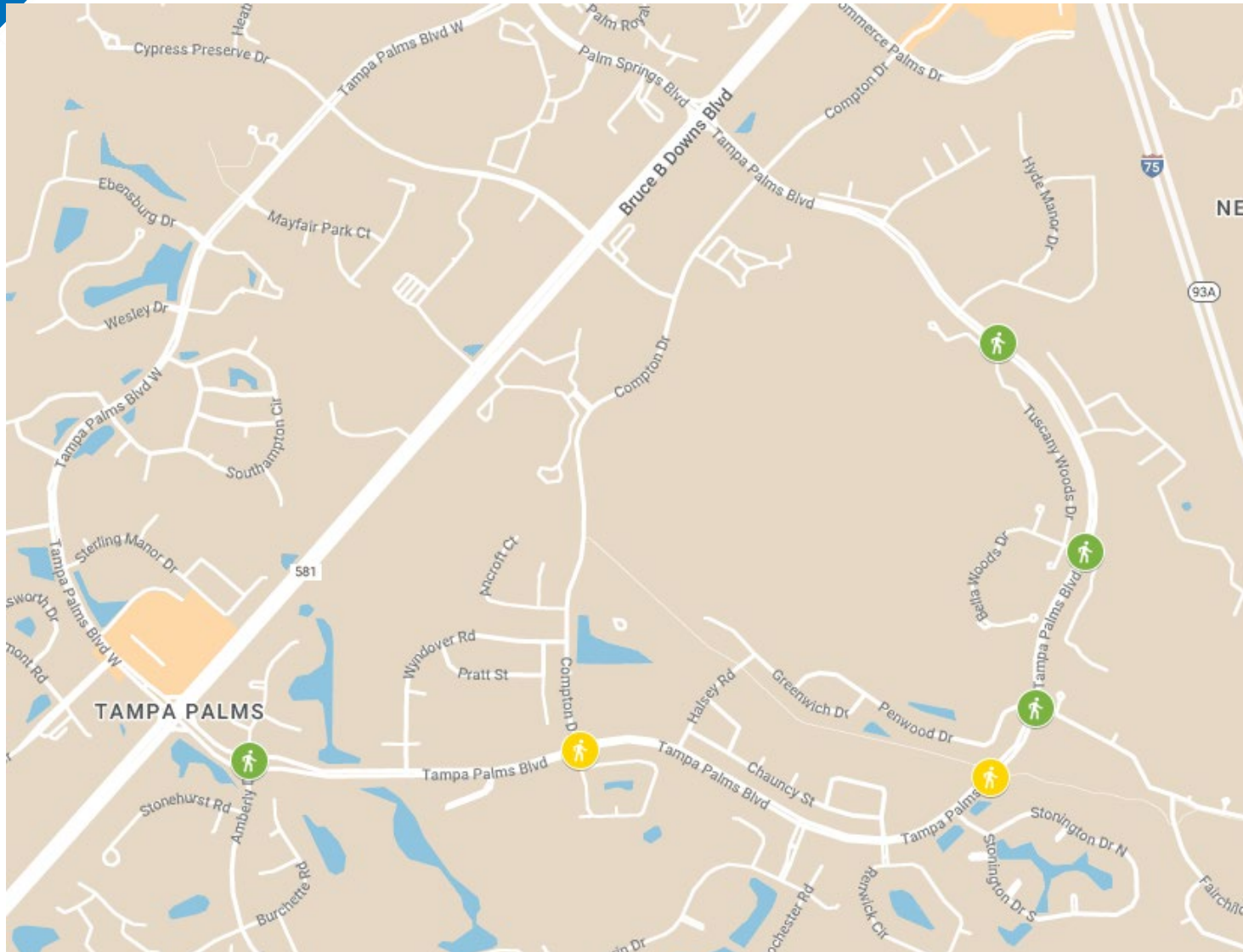


# TYPICAL ROADWAY SECTION





# Enhanced Crossings



## Legend

Marked  
Crossing



Marked  
Crossing  
with RRFB



# Rectangular Rapid Flashing Beacon (RRFB)

- *RRFB safety benefits:*
  - Pedestrian-activated warning device
  - Draws attention to the crossings
  - Proven to enhance pedestrian safety
  - Improves motorists yielding to pedestrians
  - Increases visibility for those crossing the street
  - Clearly communicates to approaching motorists of pedestrian movements



# Rectangular Rapid Flashing Beacon (RRFB)

## Proposed RRFB Locations:

- Compton Drive (southern intersection)
- Tampa Palms Trail (Teco Easement)





# RRFB at COMPTON DR/SANCTUARY DR





# RRFB at the TECO EASEMENT





# What do you think?

*How do you feel about the following?*

- Speed Limit Reduction to 30 mph
- Traffic calming devices such as speed tables at crosswalks
- Concerns we may have missed







# Schedule

## Timeline

- Public Comment (July 12, 2022- August 12, 2022)
- Finalize Plans (August – October)
- Construction first half of 2023

# Tampa Palms Boulevard Complete Streets

From Bruce B. Downs Blvd. to Bruce B. Downs Blvd.  
(South Loop)

**For more information, please contact:**

Bernadette Corey  
City of Tampa Project Manager  
306 E. Jackson Street, 6E  
Tampa, Florida 33602

[tampapalmsblvdproject@tampagov.net](mailto:tampapalmsblvdproject@tampagov.net)  
(813) 274-8512

