



LAZARILLO

City of
Tampa
Florida



Lazarillo and the City of Tampa

The City of Tampa has partnered with Lazarillo, an assistive technology company focused on navigation and wayfinding, to make important city buildings and parks in Tampa more accessible to people with disabilities.

For this pilot project, Lazarillo created accessible maps of the Tampa Municipal Office Building as well as Old City Hall, allowing people with disabilities to navigate inside these locations and create routes with turn by turn audible guidance. Lazarillo also enhanced outdoor maps of Julian B. Lane Park, allowing people to explore the park and create routes to a full directory of amenities such as bathrooms and water fountains.

This project was launched in December 2022, and is now fully operational and available to the public. To use the maps, individuals can download the Lazarillo app for free on Google Play or the App Store. You can also view the maps online via our web platform.

General Info

What is Lazarillo?

Lazarillo is an assistive technology tool used on a **daily basis** by our users to navigate their surroundings. It also can be used as a communication platform, allowing you to share important updates and inform users about your events and services in an accessible format. **Lazarillo partners become leaders in building a more inclusive future.**

Lazarillo's User and Areas of Operation

Lazarillo was developed primarily for people with disabilities who use smartphones with an Android or IOS operating system. It is accessible for blind people using Talkback or Voiceover screen readers. It **works worldwide** and is available in **English and Spanish**, as well as over 23 other languages.

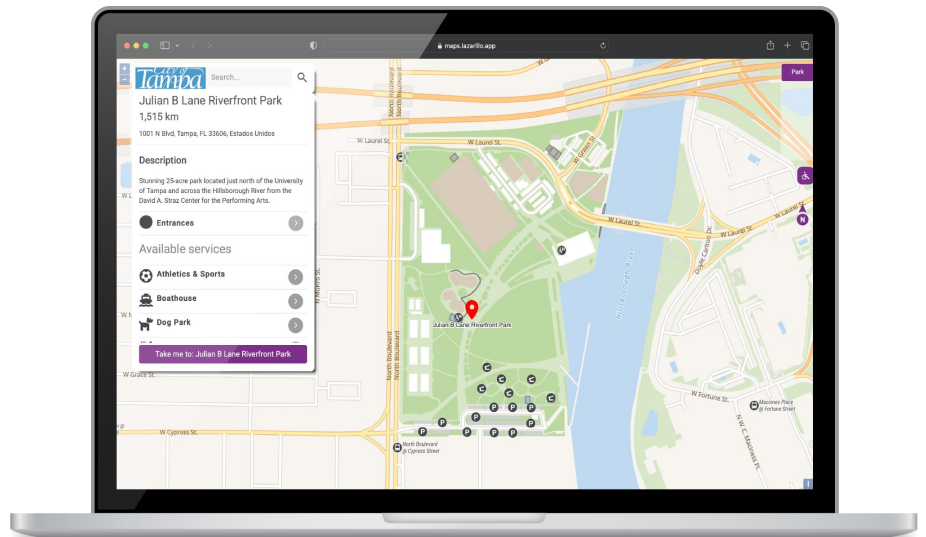
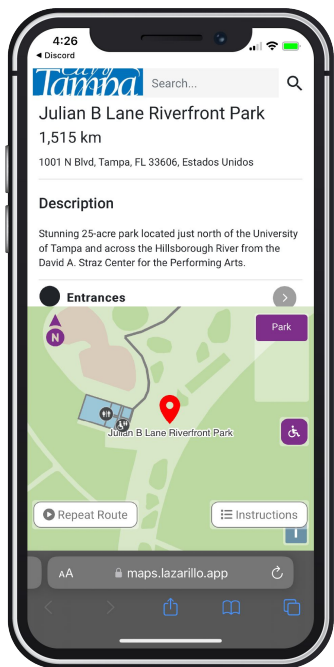


More Than **250,000**
Users Worldwide

How It Works

Lazarillo created detailed maps of the Tampa Municipal Office Building, Old City Hall, and Julian B. Lane Park in our platform, making them accessible to people with disabilities using the Lazarillo app or web platform.

When users reach one of these locations, they can open the Lazarillo app and immediately view the locations profile, giving them access to a full directory of locations that they can navigate to with audible guidance. They can also access these maps online by scanning a publicly displayed QR code or visiting the web address.



This service allows people with disabilities to explore more safely and independently by providing them with turn by turn audio guidance as they walk and describing what's around them to increase spatial awareness.



Exploration is made more accessible for the visually impaired by using audible cues about their surroundings to guide them through the location.



Lazarillo also provides wheelchair accessible routes for people with reduced mobility, allowing for safe maneuvering through a space.



Useful Links



Demo Video

Link to Web Map:

<https://maps.lazarillo.app/en/places/-N6svK1XbELK2fo0VTaw>

Lazarillo Website:

<https://lazarillo.app/>

Download the App:

<https://apps.apple.com/us/app/lazarilloapp/id1139331874>

<https://play.google.com/store/apps/details?id=com.lazarillo&pli=1>