

TAMPA MOVES

DESIGN WORKSHOP MAIN STREET

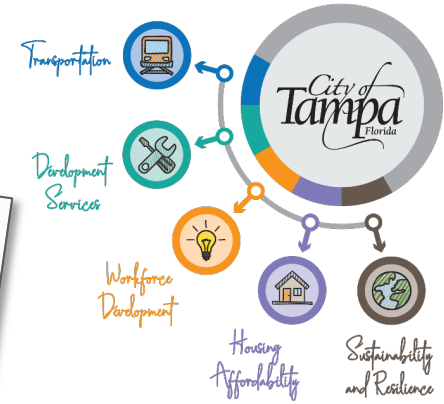


TAMPA
MO>ES
Mobility • Opportunity • Vision • Equity • Safety

Mayor Jane Castor Transforming Tampa's Tomorrow

Chair: Carole Post Co-chairs: Sonya Little, Hon. Harry Cohen

- ▶ Implement strategic transit projects
- ▶ Focus on trails and greenways as transportation options
- ▶ Adopt Vision Zero as a Citywide policy
- ▶ Reinvent urban parking & mobility
- ▶ Enhance neighborhood engagement





- ▶ Citywide Mobility Plan
- ▶ Effectively **engages the community** to create a **clear vision for mobility** in the City
- ▶ Outlines transportation **objectives and initiatives** for the next **30 years**
- ▶ Set **standards and priorities** for **all modes** of travel tailored to the City's unique street and area types





Guiding Principles

MOBILITY FOR ALL

Everyone should have access to quality transportation choices.

OPPORTUNITY

Connect people to jobs and economic opportunities.

VISION

Be visionary and dream big! Create a healthy, sustainable, and resilient future.

EQUITY

Remove barriers and improve transportation for people need it most

PUBLIC SAFETY

Safety is our first priority. One death or injury on our streets is one too many.





WHAT WE HEARD

Transportation Main St





- ▶ Background:
 - Build off neighborhood commercial district plan: <https://www.tampa.gov/city-planning/main-street>
 - Priority for CRA with funding opportunity
 - Existing concept from MacDill to Armenia
- ▶ Challenges & Opportunities:
 - High injury network (MacDill to Armenia)
 - Vacant lots and buildings
 - New multi-family housing
 - Connections between destinations and housing
- ▶ Outcomes:
 - Streetscape/safety improvements
 - Quick build option & resurfacing option
 - Pedestrian connection plan
 - Possible demonstration project at Rome
 - **Develop Streetscape Plan**

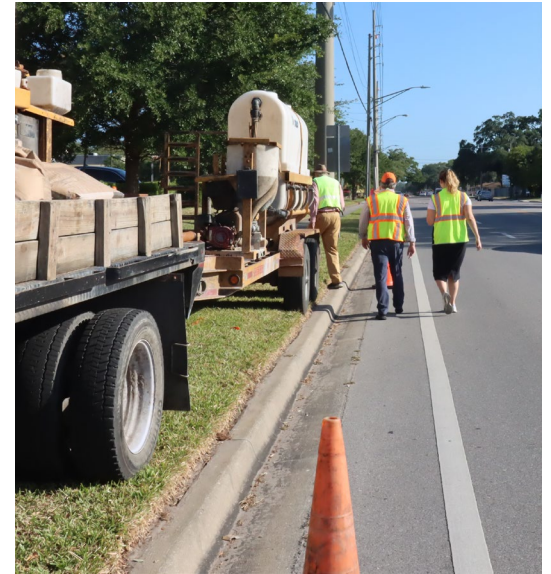


Walk Audits



The Walking Audit is a special tool allowing a mix of staff, elected leaders, business leaders, neighbors and many other stakeholders to come to a common understanding and reach “common ground” by seeing and sensing the issues opportunities and challenges before presenting their longheld point or concern. Many new systems and tools come to life using the right public engagement process.

What We Saw



The Walking Audit is a special tool allowing a mix of staff, elected leaders, business leaders, neighbors and many other stakeholders to come to a common understanding and reach “common ground” by seeing and sensing the issues opportunities and challenges before presenting their long-held point or concern. Many new systems and tools come to life using the right public engagement process.

Share Your Vision of Main Street

WHAT WE HEARD

Historical infrastructure

Part of bike path considered good

Carb → bike
Car parking

Handouts and help

Complete interaction and explain

Street parking near to start

More Public Art murals - more history

25 mph max

whole people in the neighborhood

Planting trees changed

Kids playing in street

perception of crime

HEAVY TRUCKS ON MAIN

speeding

Bike bike NB Boulevard to connect bike

Kathlamet Lincoln Greenways

Parking, office relief

Connection to parks

Diverse Community

Need shade

Historic AREA / HOMES

Need speed

Cuban Pioneer

Main street parking & landscaping

2502 Hand

Trassy

Parking!

Unisex Bus Bikes & other people

Access to River WALK

Closing at Howard

No big trucks

Parking on streets is good

Sidewalk wider & street to be wider

Camino Avenidas - Historic

- use main for exercise - to go downtown

PAVA connectors (SAFE)

Change Howard but to zoning street

Public transportation corridor to downtown (get street view)

West Town (Historical Walk)

Historic Gateway

Run STOP Sign

Compliance

PARENT PICK UP 2pm - 3pm

speeding through

go to school for their street cars neighborhood - get school

Maps - historic walking bar

No parking

Impact?

Connection to ybar



Share Your Vision of Main Street

WHAT WE'VE HEARD

Podium are imp. - Park culture

Center of walking was Howard Ave

Nothing to walk to on Main (all residential)

Kids playing in street

Perception of crime

Planting Trees Paris @ N.

HEAVY TRUCKS ON MAIN

speeding

25 mph max

Later Before...
...to...
...to...

Planting Trees Paris @ N.

HEAVY TRUCKS ON MAIN

speeding

Diverse Community

Historic AREA / HOMES

Parking!

To hot no shade

Impact?



Part of bike / Main connected grid

25 mph max

Handicapped Help

More Public Art - murals - more history

Complete interaction Blvd + Main

Street parking

Handicapped Help

Bike box NB Boulevard to correct link

Planting Trees Paris @ N.

Parking after school

2502 Howard

Canvas Awnings - Howard

use Main for exercise to go downtown

Historic Gateway

Run stop sign

Crossing at Howard

No big trucks

Parking on streets seed

Sidewalk wider & street to be wider

Public transportation

Maps - historic walking bar

No parking

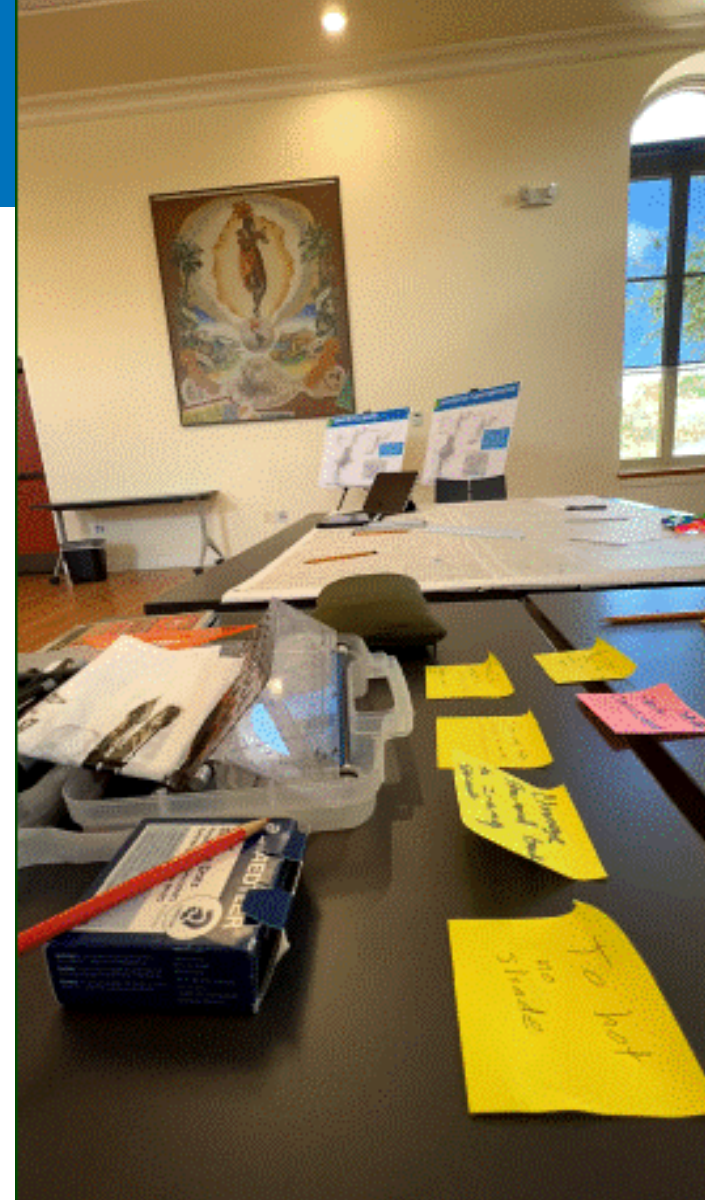
Collection to bar

Compliance

PARENT PICK UP 2pm - 3pm

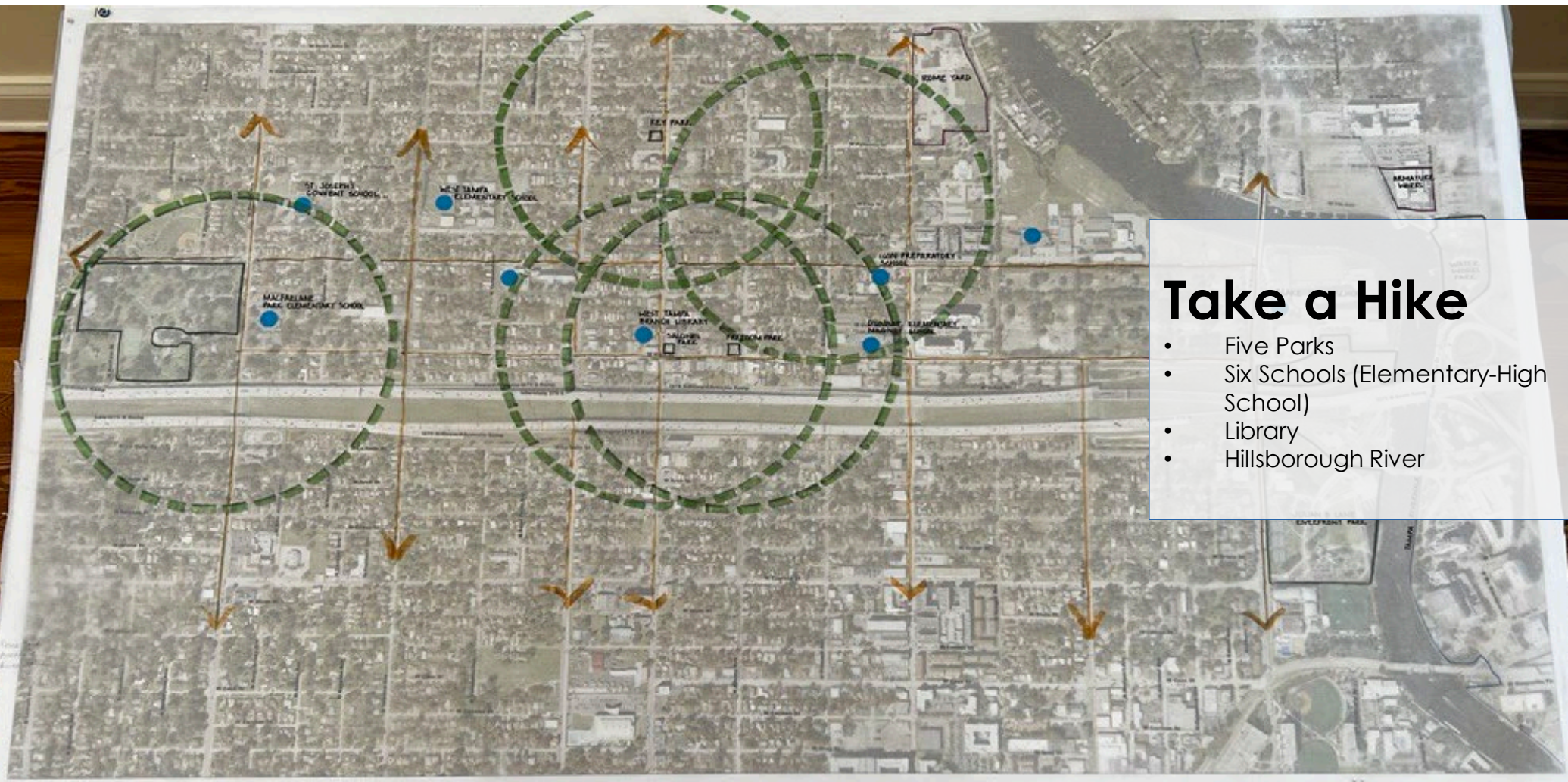
Transportation What We Heard

- ▶ The Main Street corridor is more than just a roadway...
 - ...a historic street with lasting impacts throughout the broader City of Tampa
 - ...the focus of a passionate community
 - ...going through significant changes
- ▶ What makes Main Street a Place
 - Its community, businesses, and residents
 - ...**not** high-speed traffic
 - ...**not** lack of parking
- ▶ **Uplift the community as a whole**





THE BIG PICTURE



Take a Hike

- Five Parks
- Six Schools (Elementary-High School)
- Library
- Hillsborough River

Main Street Corridor

25 64
4.00 1000



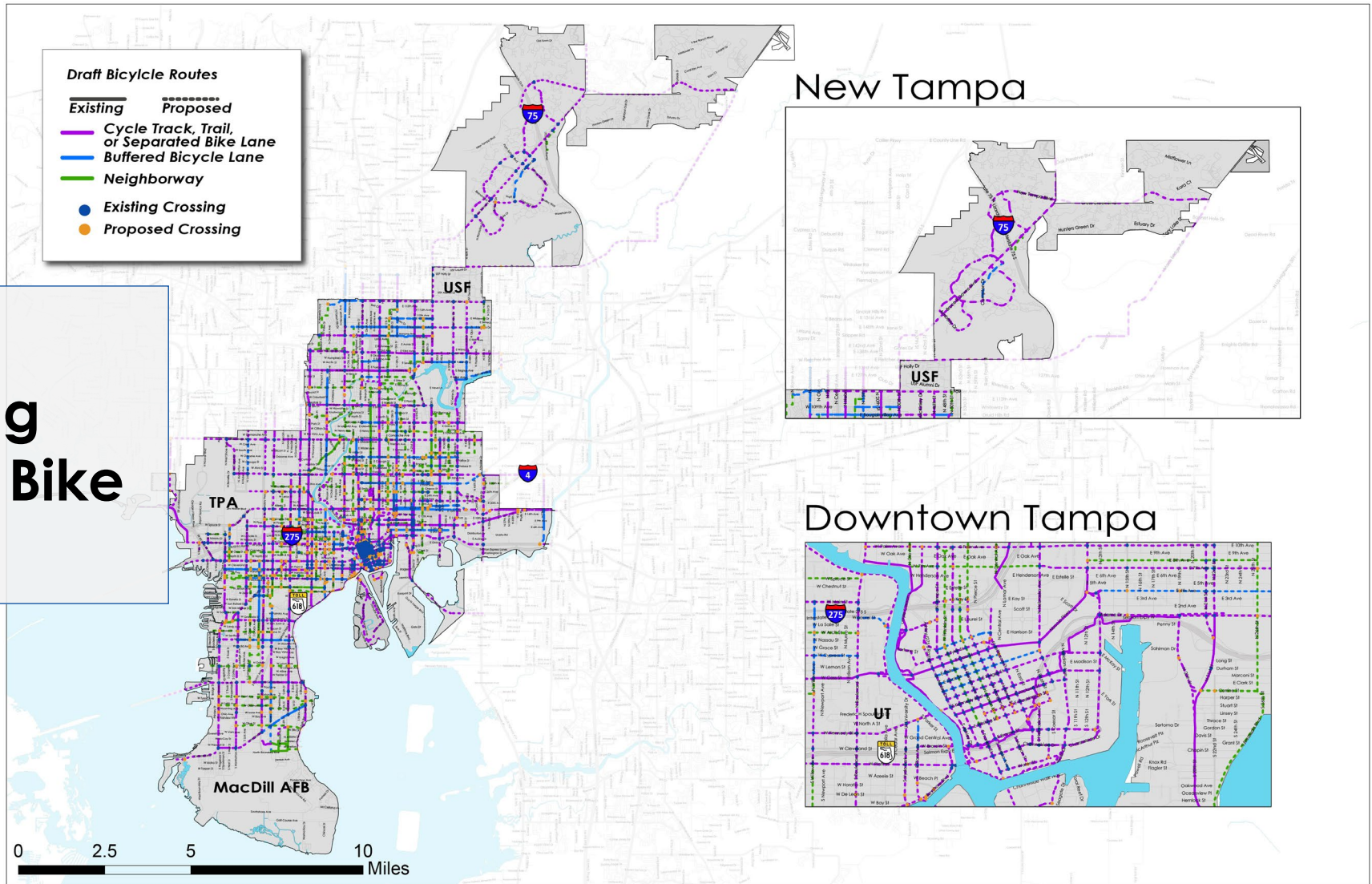


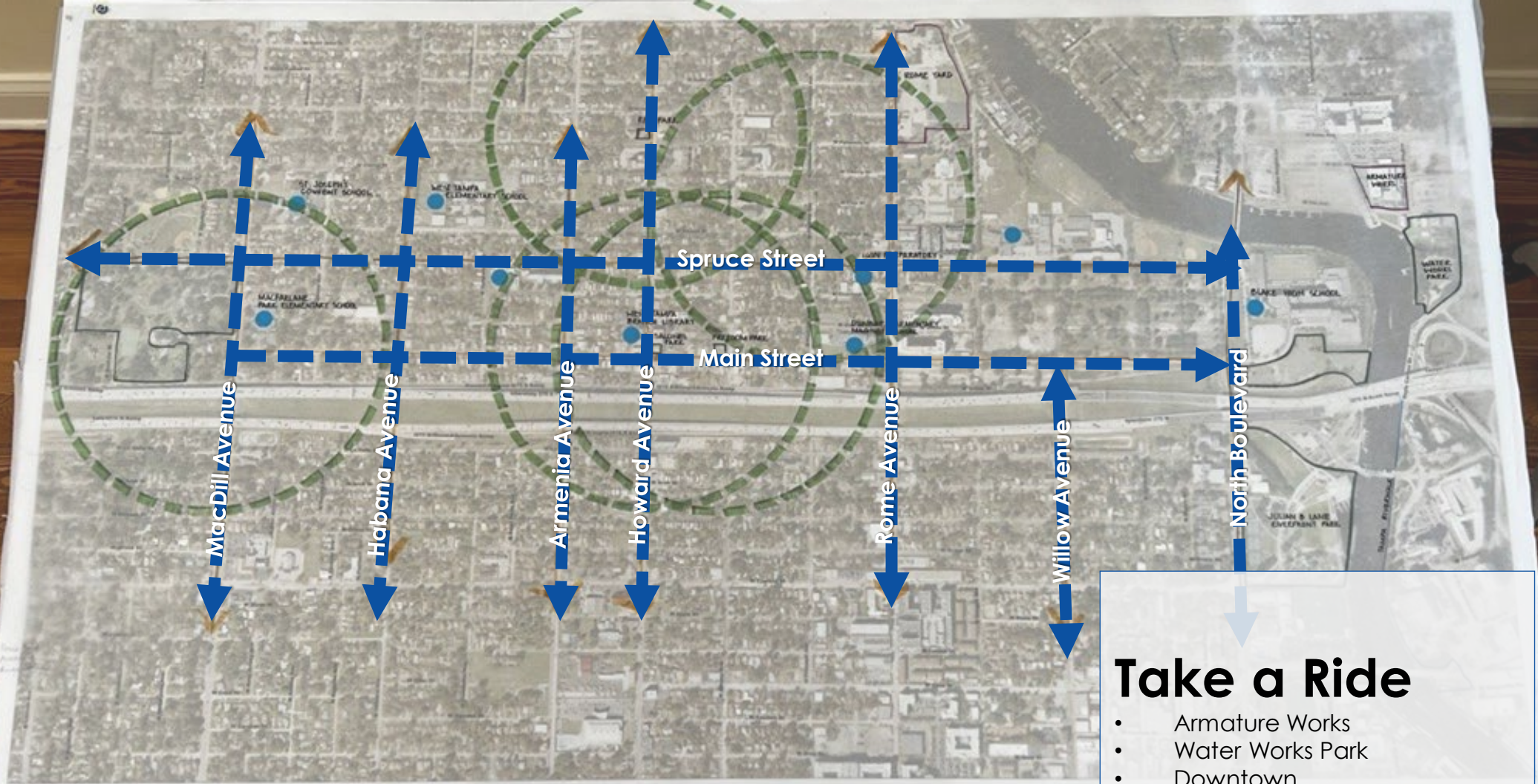
What's New?

- West River District
- Neighborhood Commercial District Plan
- General business interest and development

Main Street Corridor

Connecting Tampa by Bike





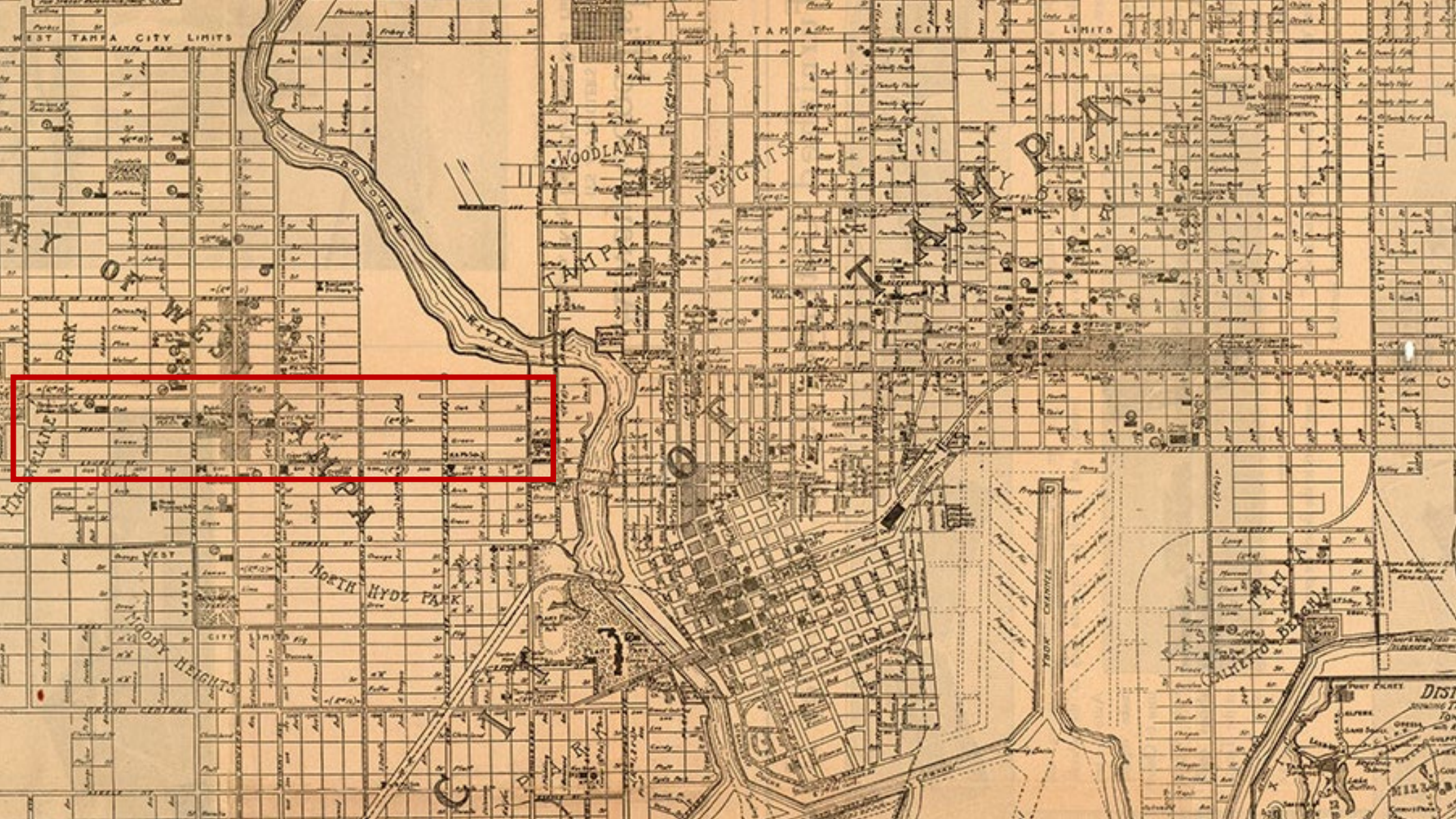
Main Street Corridor

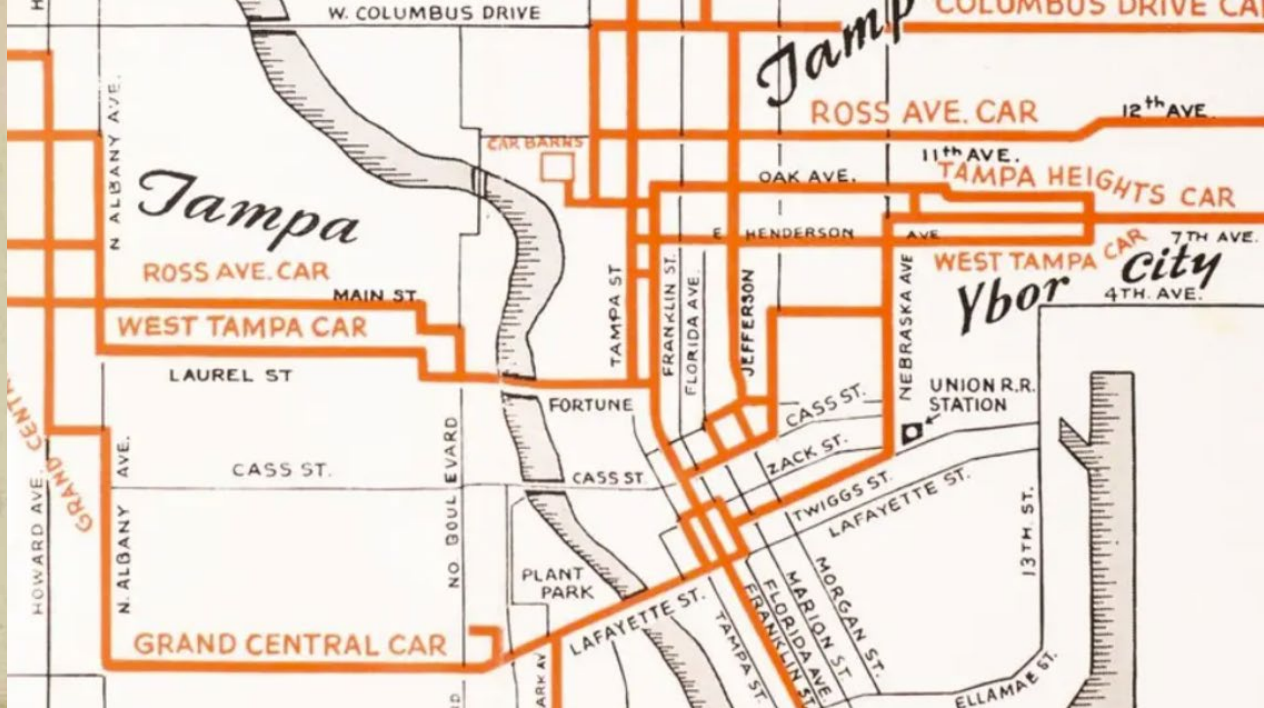
Take a Ride

- Armature Works
- Water Works Park
- Downtown

A blue-tinted historical photograph of a busy street in West Tampa, Florida. The scene is filled with early 20th-century automobiles, including a prominent dark car in the foreground with a license plate that reads "8161-1918". People are walking along the sidewalks and standing near the vehicles. The buildings are multi-story, with one featuring a balcony. Utility poles with power lines are visible on the left side of the street. A yellow triangle is overlaid on the left side of the image.

HISTORIC WEST TAMPA



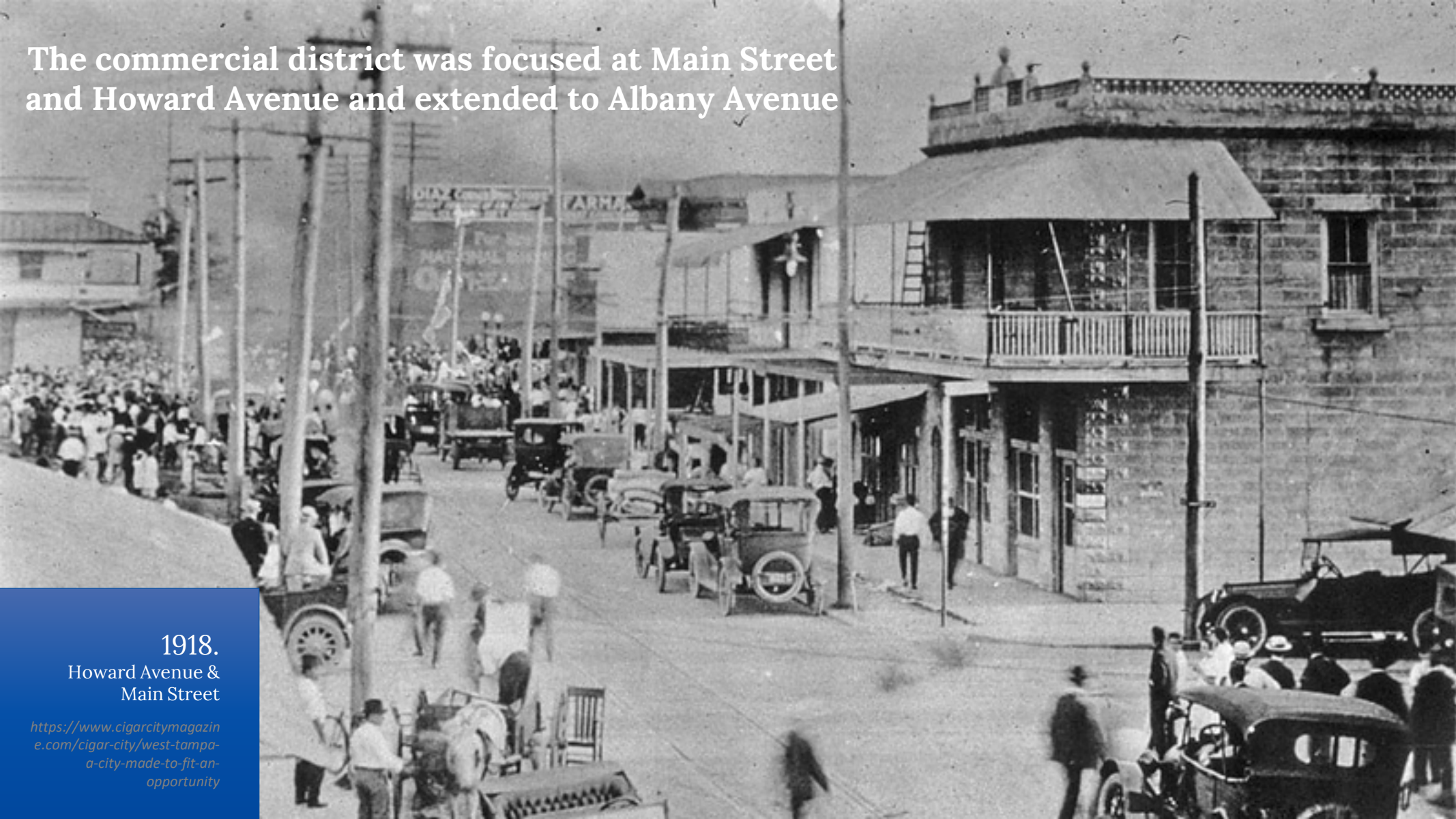


The commercial district was focused at Main Street and Howard Avenue and extended to Albany Avenue

1918.

Howard Avenue &
Main Street

<https://www.cigarcitymagazine.com/cigar-city/west-tampa-a-city-made-to-fit-an-opportunity>





1918.
Main Street
(Looking East)

Public domain. Courtesy,
Tampa-Hillsborough County
Public Library System.

Photo by
Bryant
Nov. 20, 1918



1935.

Howard Avenue &
Main Street

<https://www.cigarcitymagazine.com/cigar-city/west-tampa-a-city-made-to-fit-an-opportunity>



1947.

Main Street &
North Boulevard

Public domain. "Courtesy,
Tampa-Hillsborough County
Public Library System."



MAIN ST

HOWARD AVE

1950's.
Howard Avenue &
Main Street

*Public domain. Courtesy,
Tampa-Hillsborough County
Public Library System.*



Today.
Howard Avenue &
Main Street

MAIN ST

HOWARD AVE

HOWARD AVE

1950-1959

Aerial of West Tampa around the intersection of Main Street and Howard Avenue : Tampa, Fla. *(Looking south toward the Interstate)*

Public domain."Courtesy: Tampa-Hillsborough County Public Library System."



IDEAS FOR MAIN STREET

Main Street (N Boulevard and MacDill Ave)

- Section length 1.5 miles
- Two lanes, 40 feet, with on-street parking
- Sidewalks and planter strips
- 20-foot lanes with parking (Center line)
- Posted Speed (25 mph), School Zone 20 mph
- Neighborhood of traditional single-family homes
- Parallels I-275 and Green Street
- Traffic Volume (+/- 4,000)
- Needs Traffic Calming
- Brick underneath

**A Walk Can Be Made "Shorter" By a
Great Experience**





The Importance of Shade



OS

REYNOSA

Reynosa

ORO JOYERIA

Reynosa 250

REYNOSA

REYNOSA

Improved Business

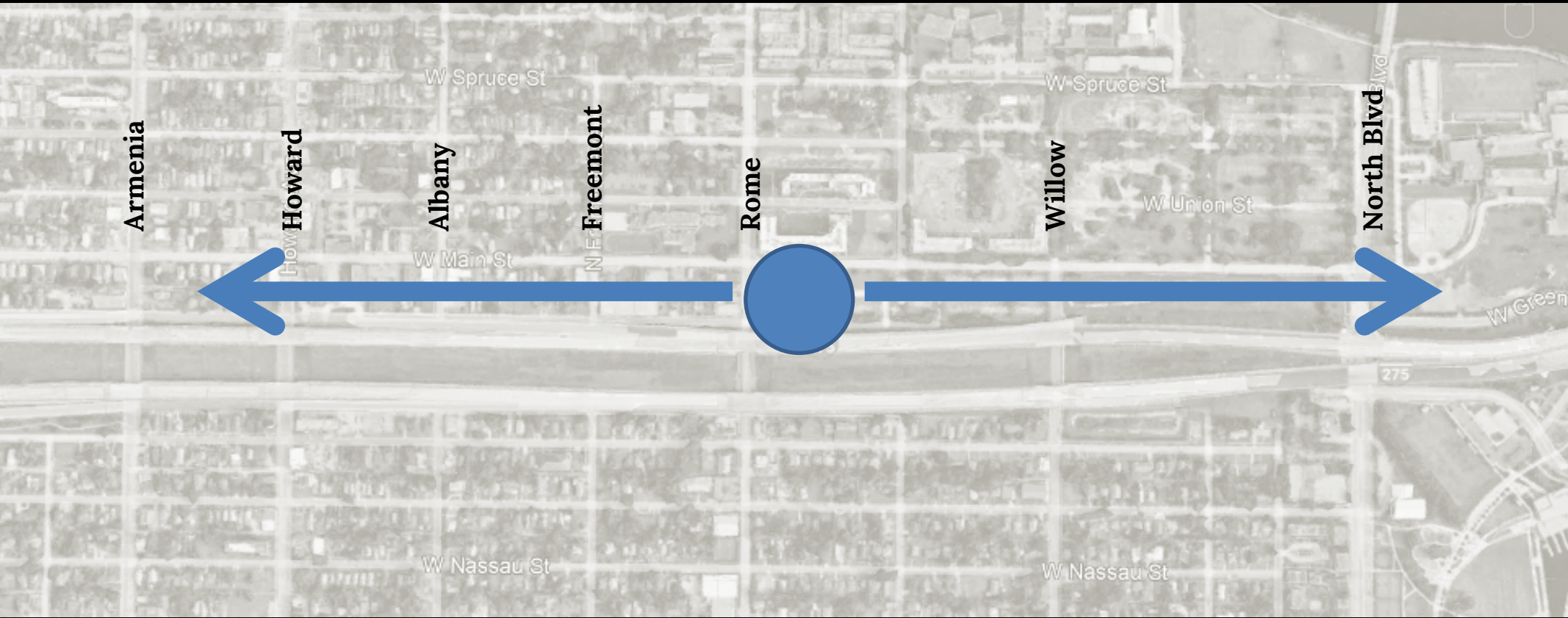
Businesses on tree canopied streets show 15-20% higher income.

This increase provides an essential competitive edge needed for main street success







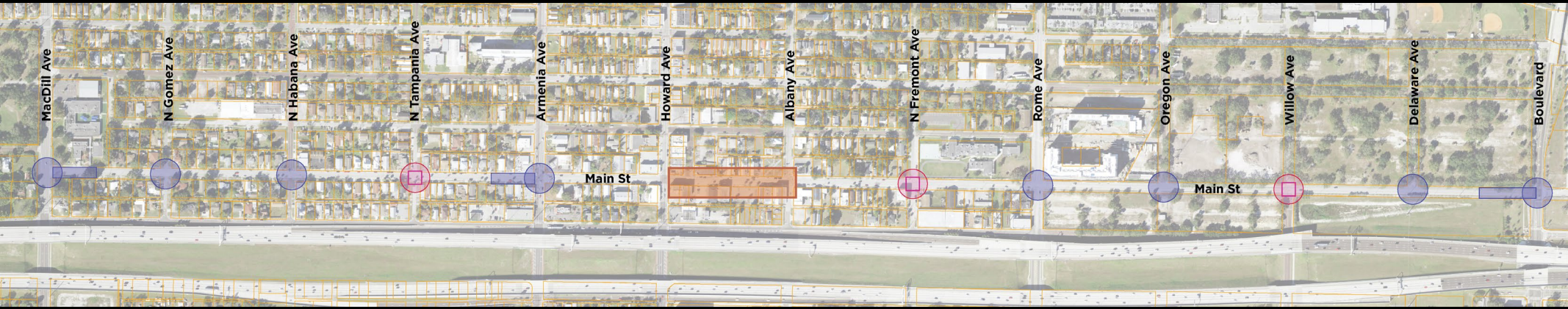


“Park Once”





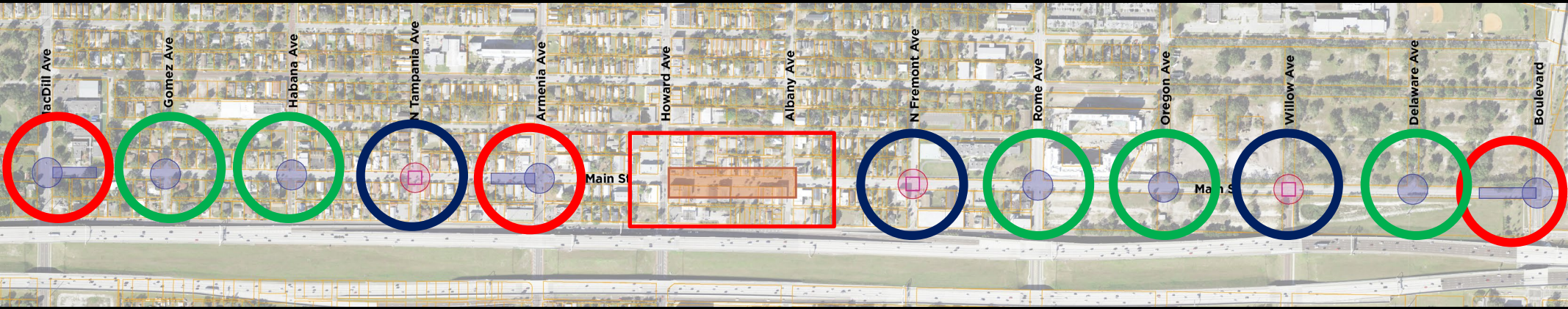




Historic Neighborhood

Urban Core

“New” Neighborhood



Historic Neighborhood

Urban Core

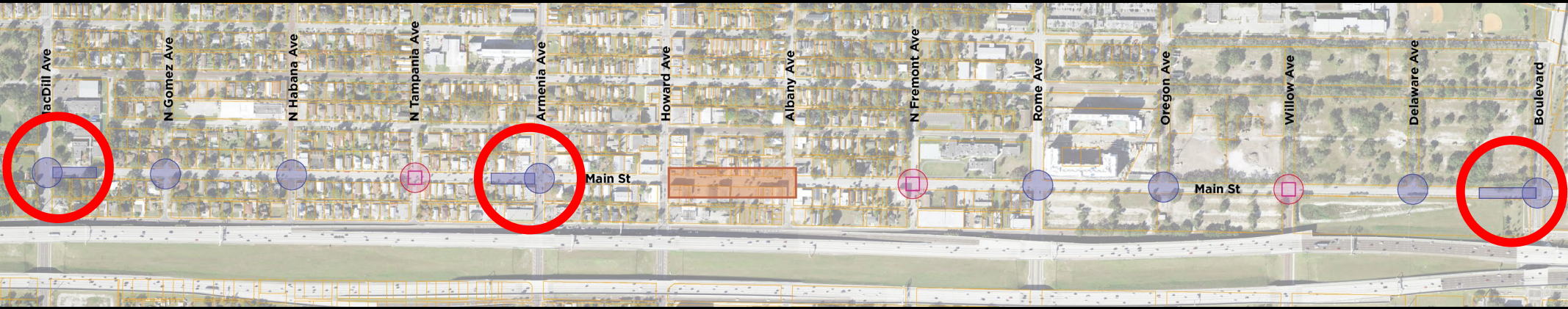
“New” Neighborhood

Gateways

Intersection Curb Extensions

Raised/Tabled Intersections

Festival Street



Gateways



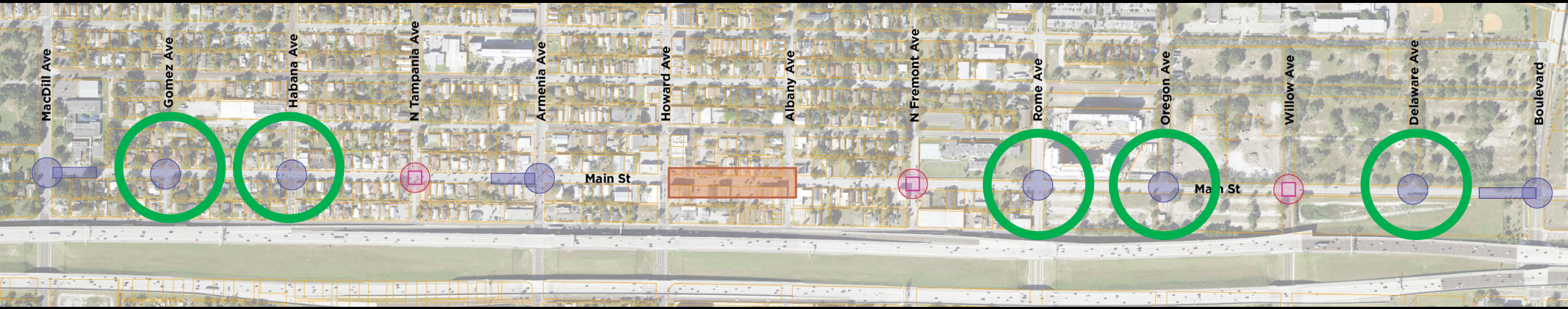
N Macdill Ave

W Main St

W Main St

W Main St





Intersection Curb Extensions

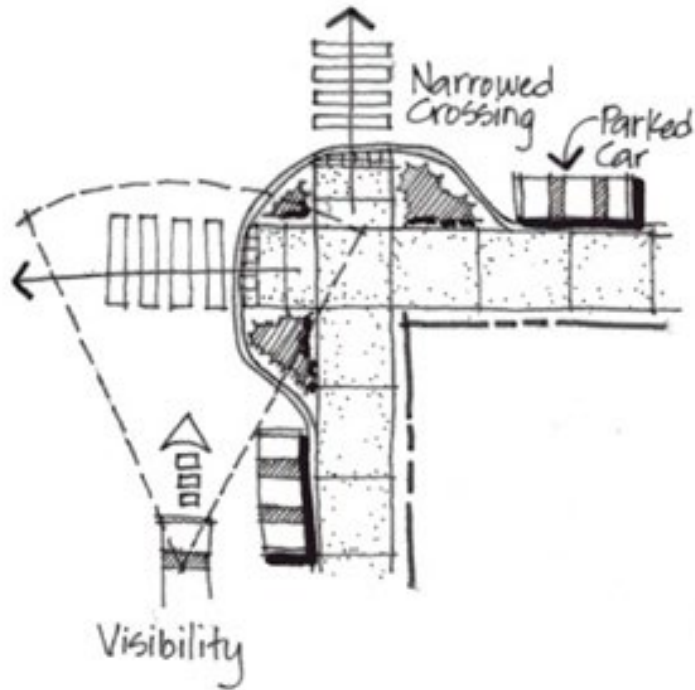
W Main St



BUMP OUTS – WHAT IT'S NOT



Bump Outs (Curb Extensions) Advantages

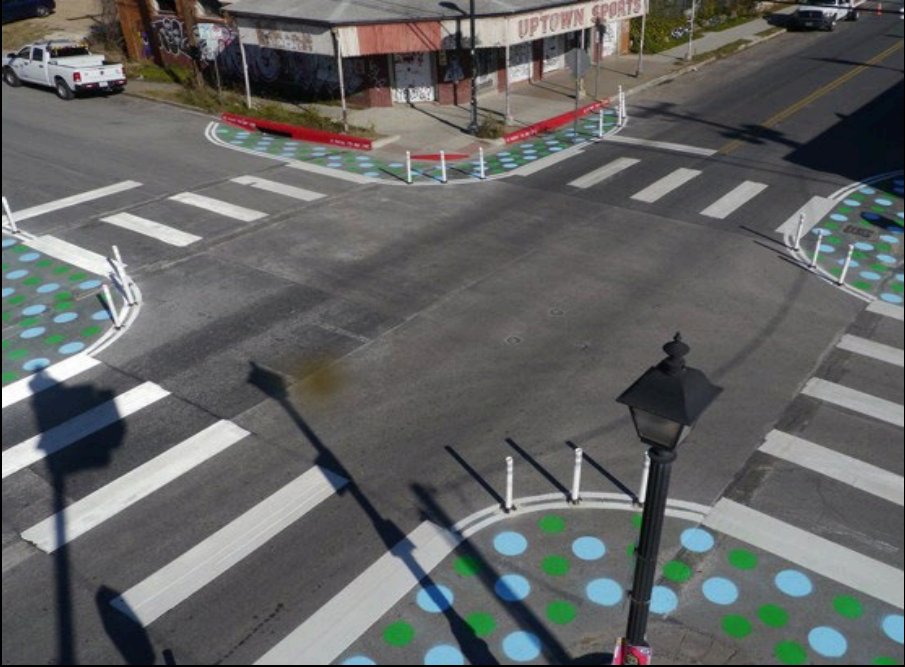
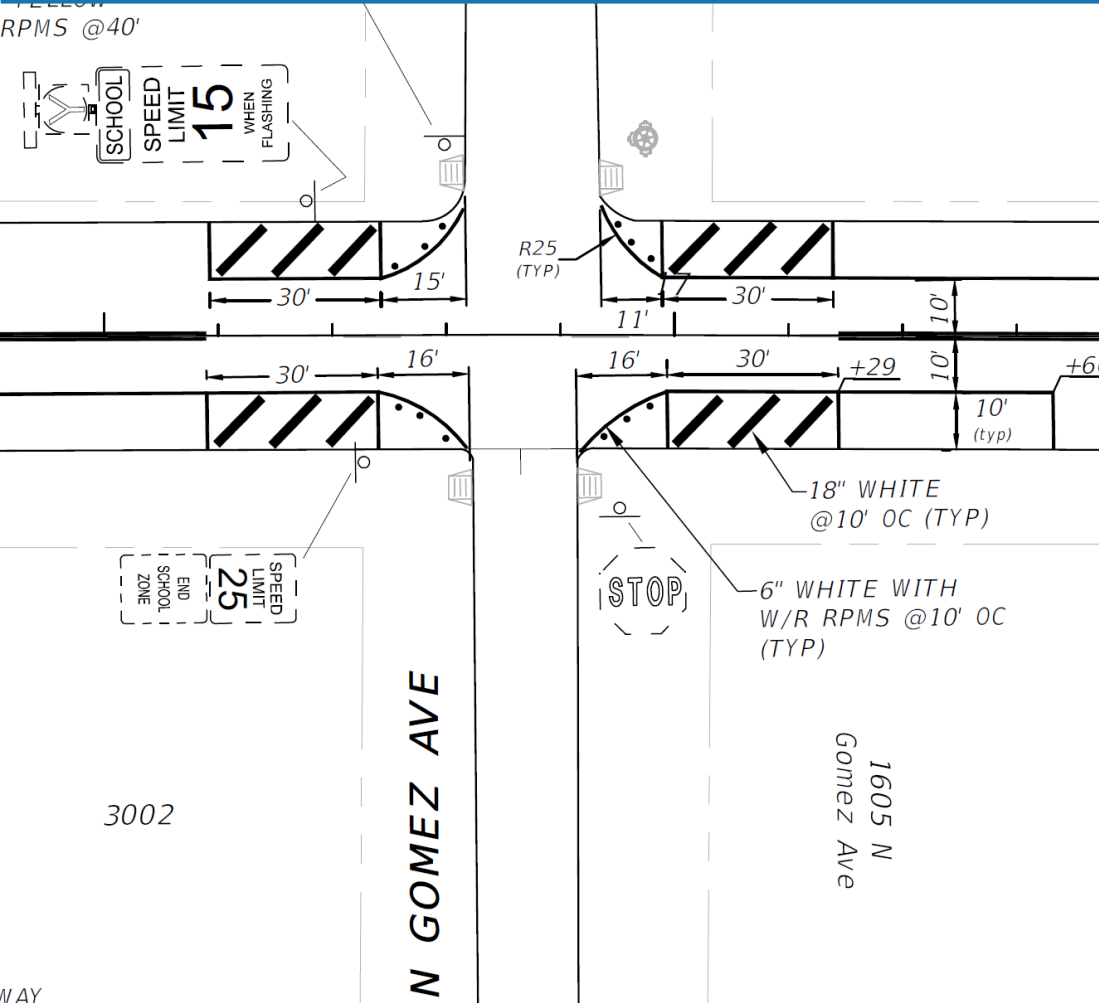


- Motorists no longer block sight lines
- Ground cover is kept trimmed to 24 inches
- Trees are undercut to seven feet
- Motorists can pull forward to see past parked cars
- Motorists are able to see pedestrians standing in a prominent location
- Keeps speeds under control, especially on turns
- Creates new public space
- Helps slow traffic in important areas



BUMP OUTS – WHAT IT IS...

(QUICK BUILD)

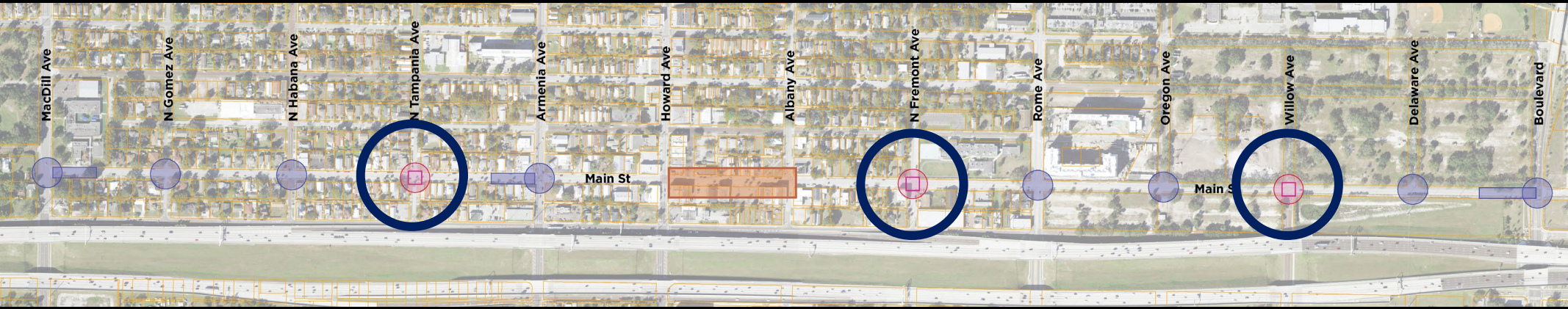


BUMP OUTS – WHAT IT IS... (PERMANENT)

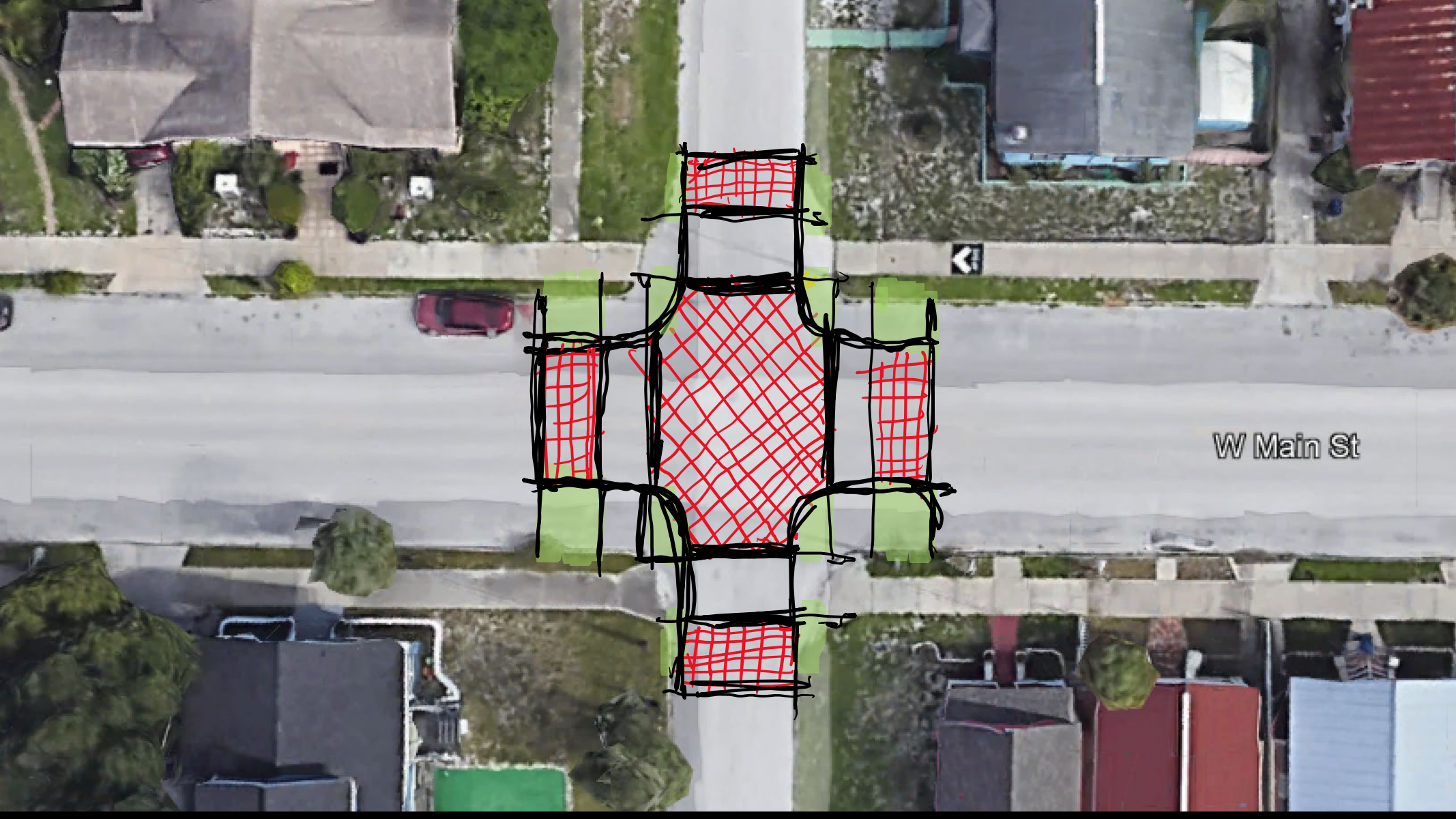


Includes ramps and curb extensions for accessibility, lessens crossing distances. Calms traffics by extending curbs/landscape into non-parking areas

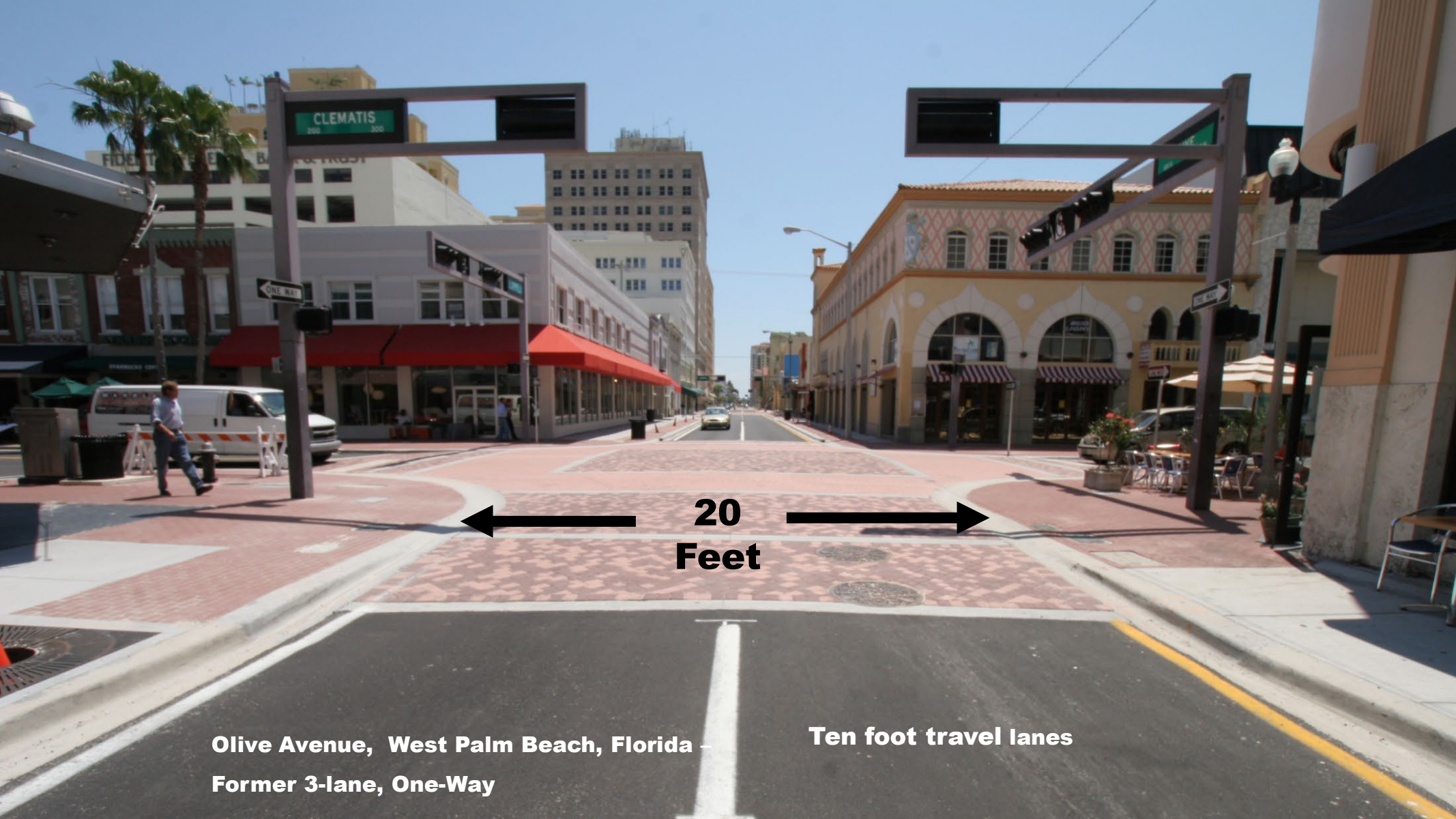




Raised/Tabled Intersections



W Main St



CLEMATIS
200 300

ONE WAY

ONE WAY

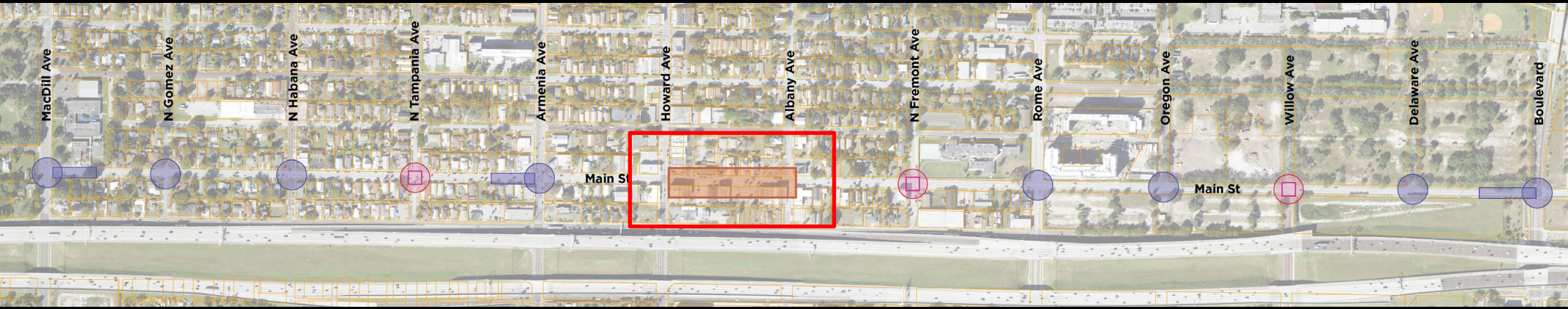


20
Feet

Olive Avenue, West Palm Beach, Florida –
Former 3-lane, One-Way

Ten foot travel lanes





Shared Space



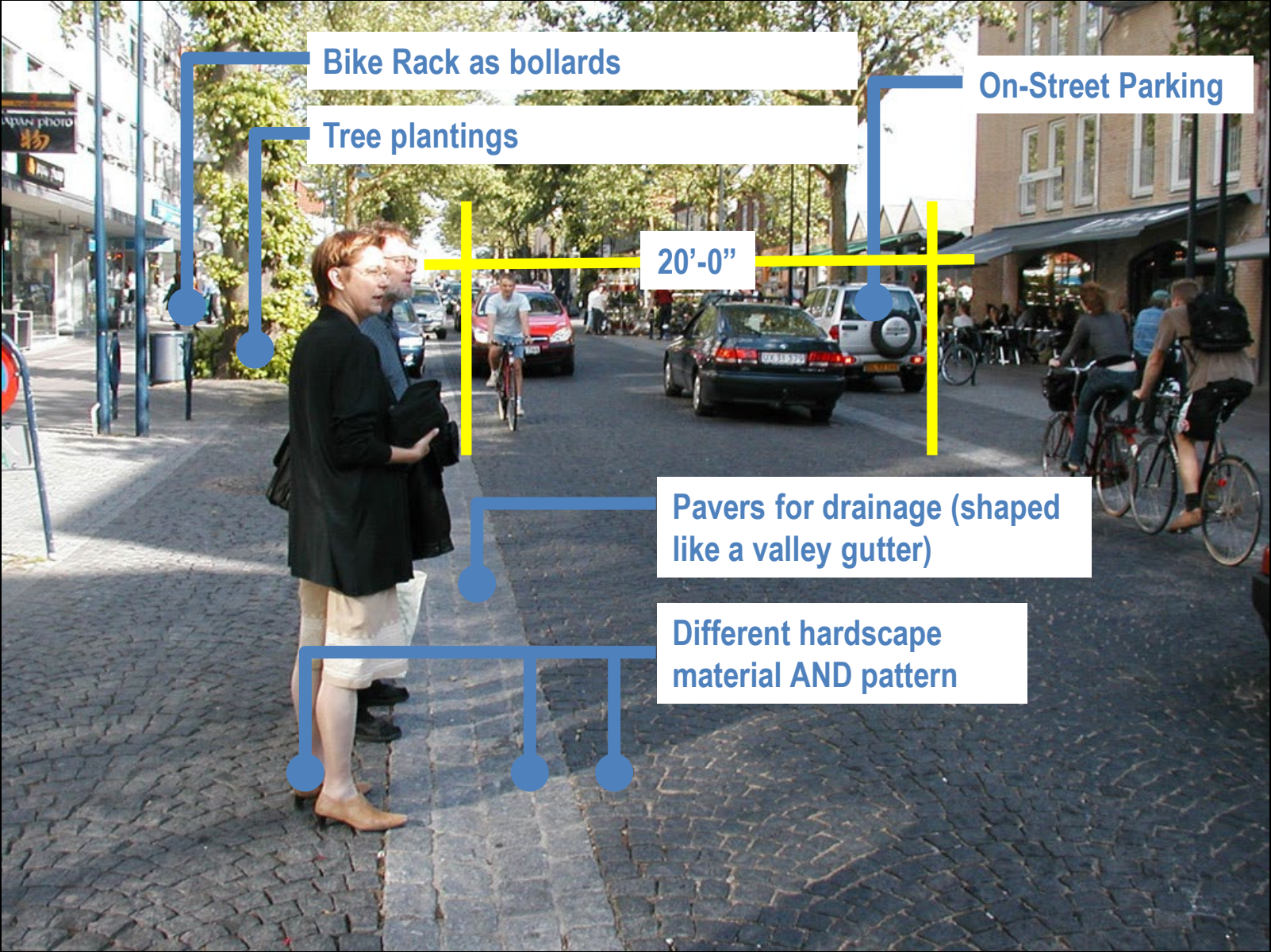
Stone planters

**Paving Material
change**



Pavement type changes for "curve"

Planters as bollards



Bike Rack as bollards

Tree plantings

On-Street Parking

20'-0"

Pavers for drainage (shaped like a valley gutter)

Different hardscape material AND pattern



Gemini BV



BAR-N

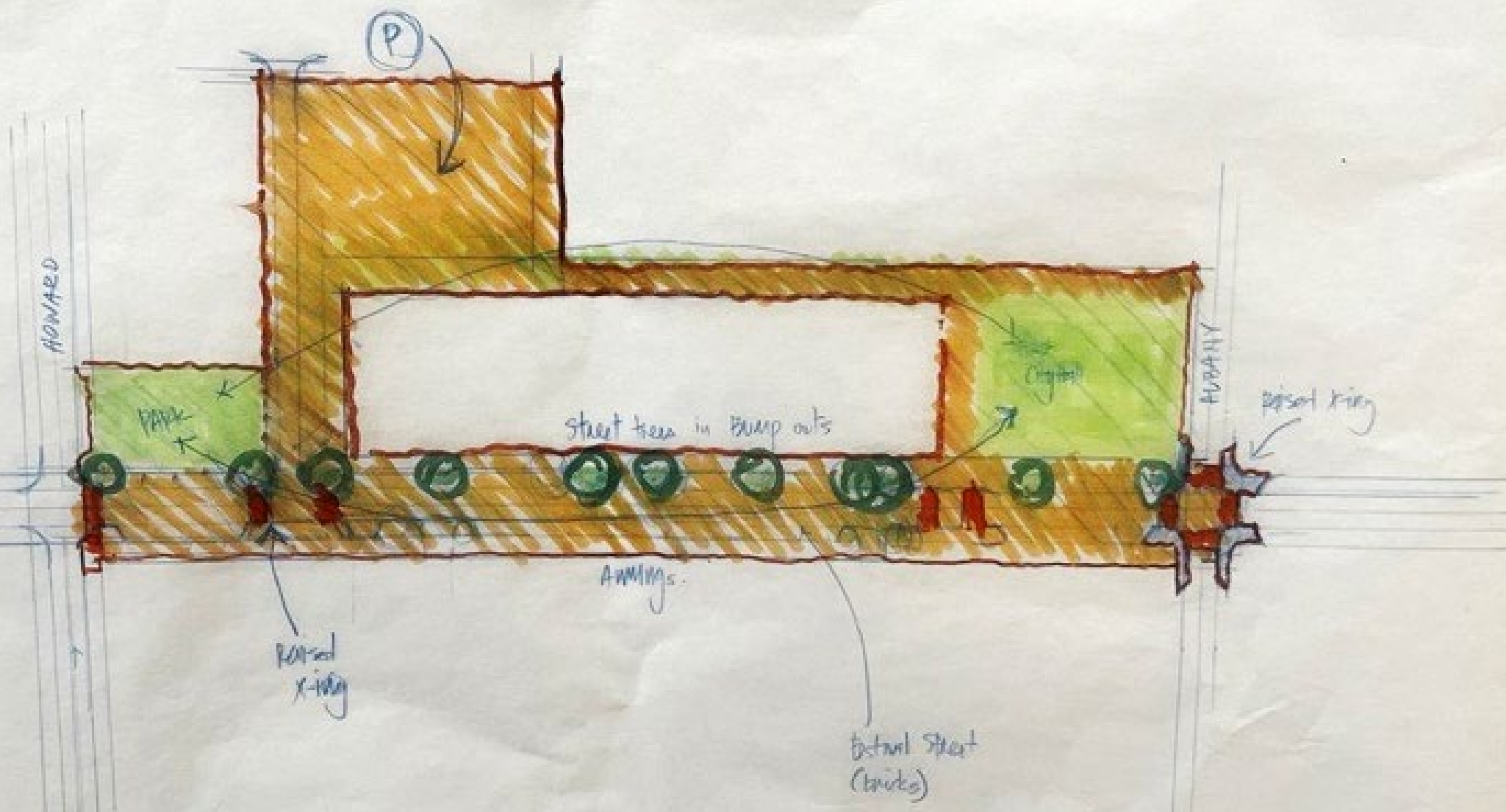
BRIGHT HOUSE NETWORKS

BARNES & NOBLE

BARNES & NOBLE

BARNES & NOBLE





P

ROADWAY

park

street trees in pump outs

circular

ROADWAY

raised ring

AWMINGS

raised x-way

bicycle street (bricks)

W Union St

W Union St

W

urant
ill

Calo
Condition

Priced Rite Liquor,
Wine & More
Liquor store

Hat Rack
Hat shop

General Assembly
Church-First

Heart and S
Tattoo Lou

ware

Barbecue

Bay Cannon
Beer Company

UPTOP FITNESS

Marathon Gas

ard Ave





Boylston Ave 700

UNION ARMS

HOF CLUB



DESIGN ELEMENTS



ORANGE STREET POST OFFICE
UNITED STATES POST OFFICE

ALL WAY

MAY USE BICYCLE TOLL LANE

STOP



WALKER DOOR
334-8797

ALL OF
WALKER DOOR
WALKER DOOR
WALKER DOOR
WALKER DOOR

WALKER DOOR
334-8797

ON DETOUR

1000











▶ **Main St:** May 3rd and 4th

Open Workshop
West Tampa Branch Library
May 3rd 10:30 AM-2:00 PM
May 4th 10:30 AM-1:30 PM

Final Presentation
WEDU 1300 North Blvd.
May 4th at 5:00 PM

▶ **Habana Ave:** May 18th and 19th
The Art Institute of Tampa

▶ **Twiggs St:** June 1st and 2nd:
Tampa Union Station

▶ **MacDill Ave:** Week of 6/13
Location TBD





QUESTIONS

8161-
-1918
8-1-18