

Forest Hills Community Meeting

Mobility Department
Stormwater Engineering

October 15, 2024

City of
Tampa
Florida



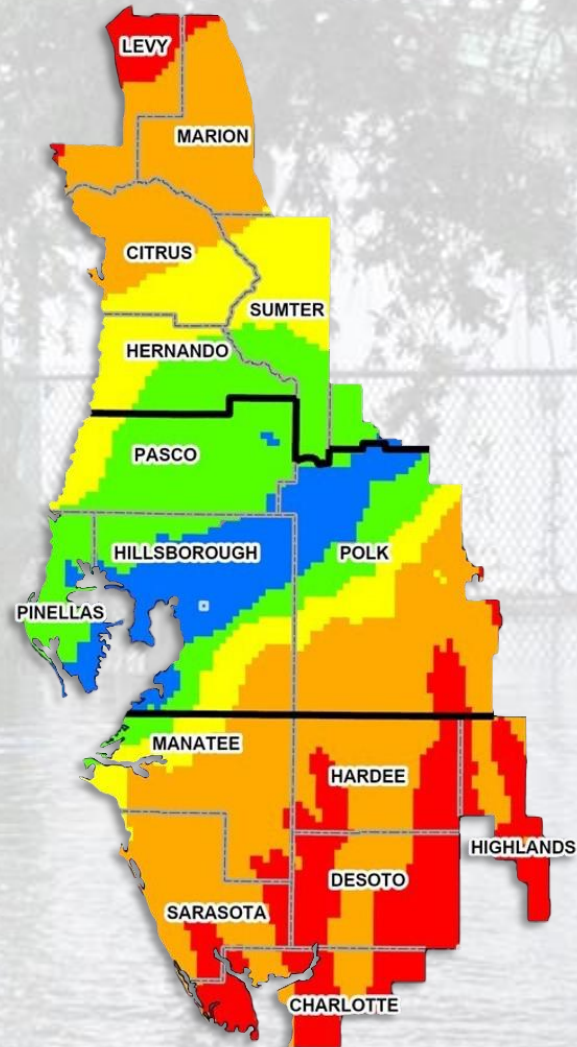
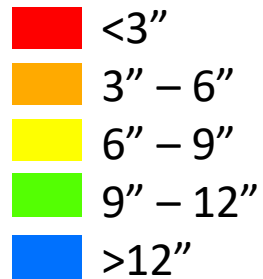
Hurricane Milton Dumped Unimaginable Rainfall

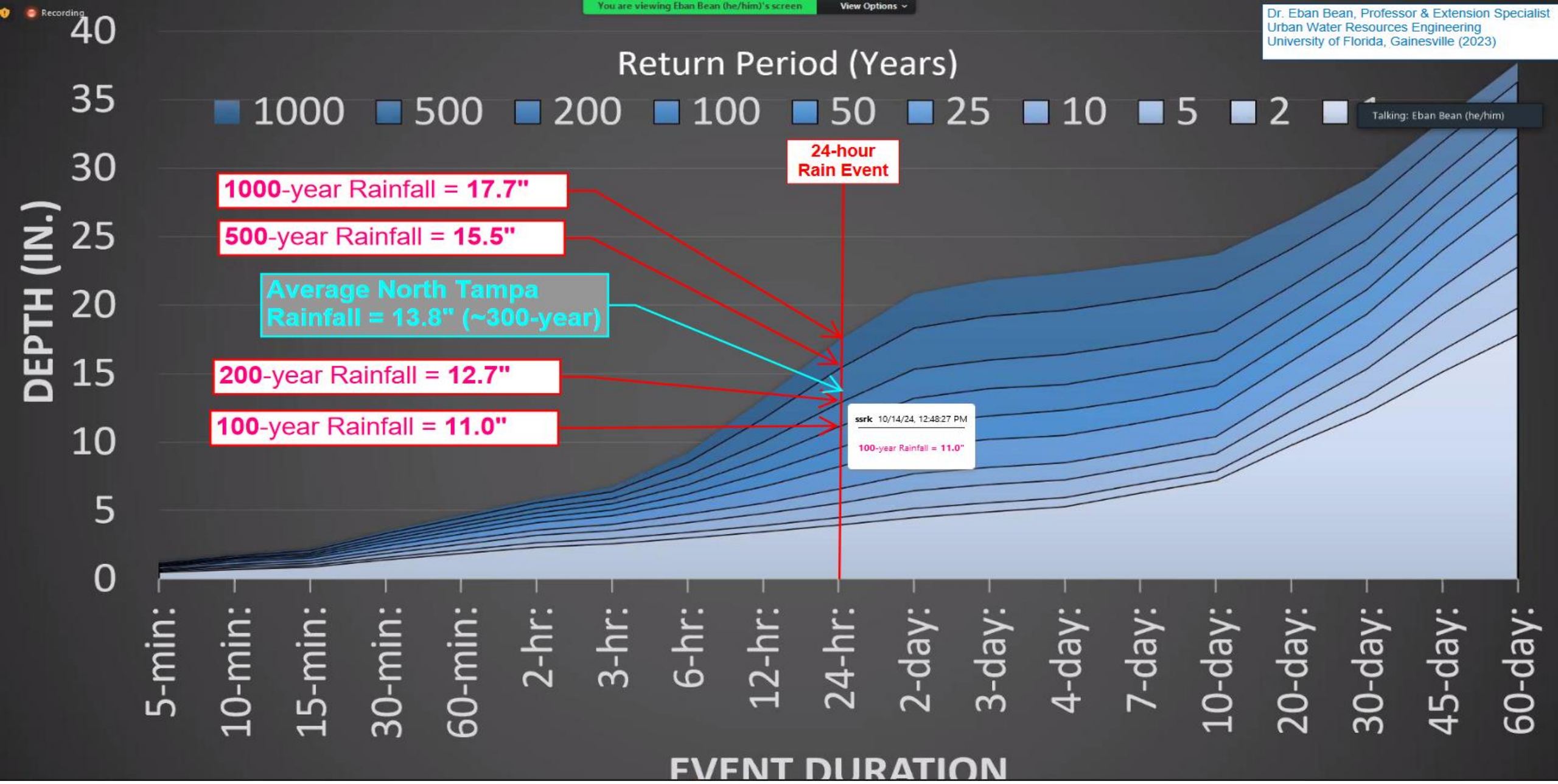
SWFWMD Rainfall Distribution

Hurricane Milton
10/9/2024 – 10/10/2024

****Provisional Data****

LEGEND

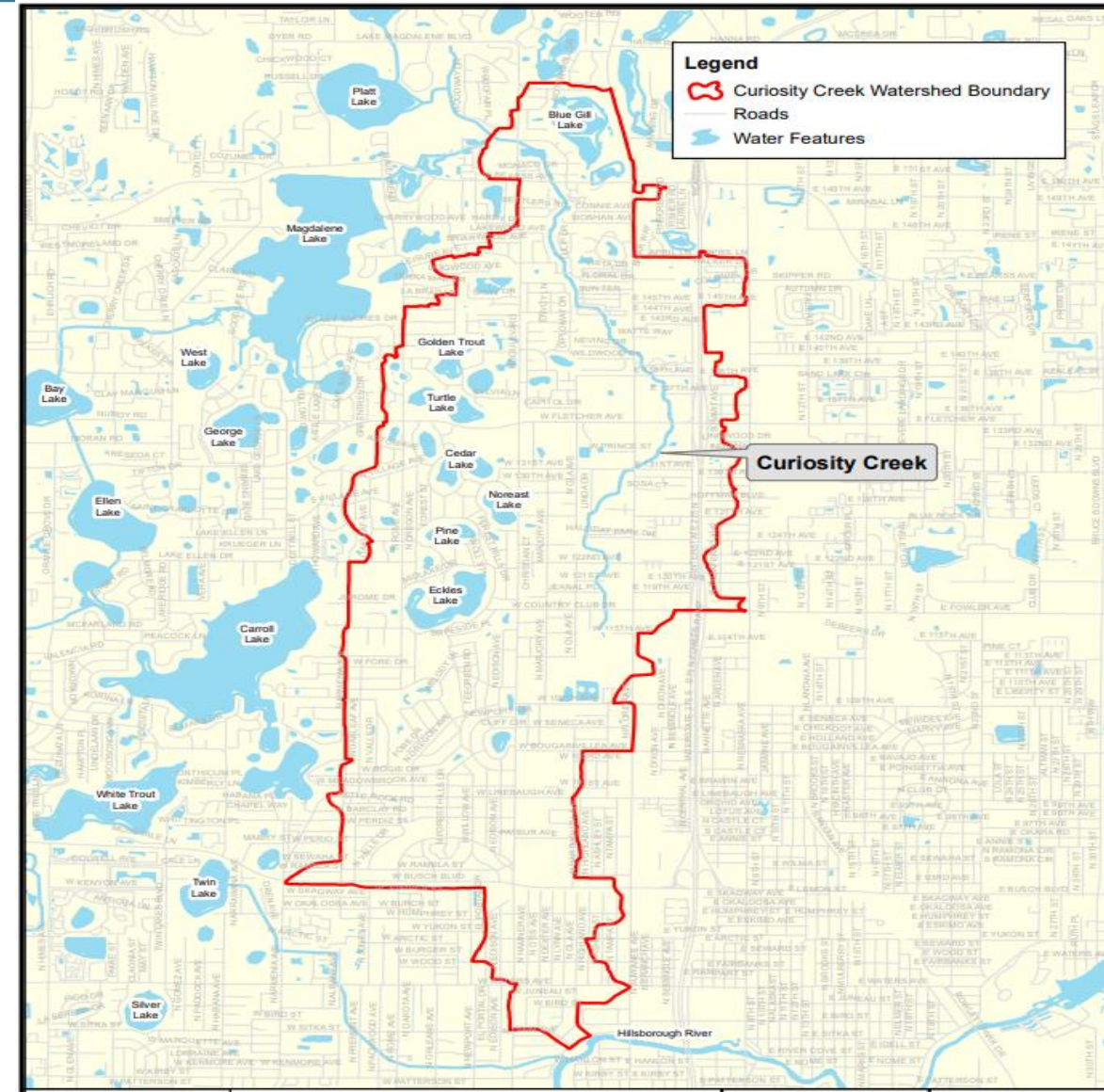
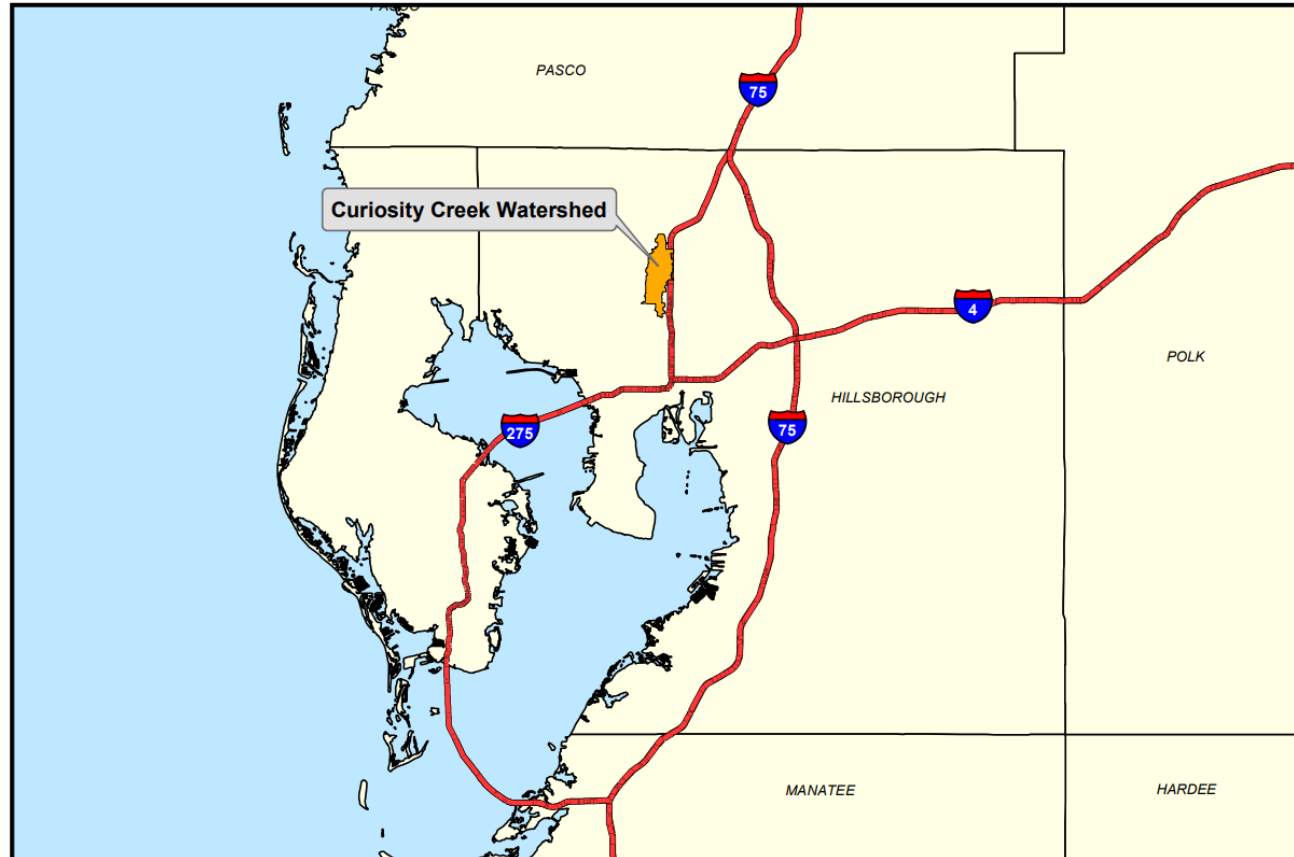




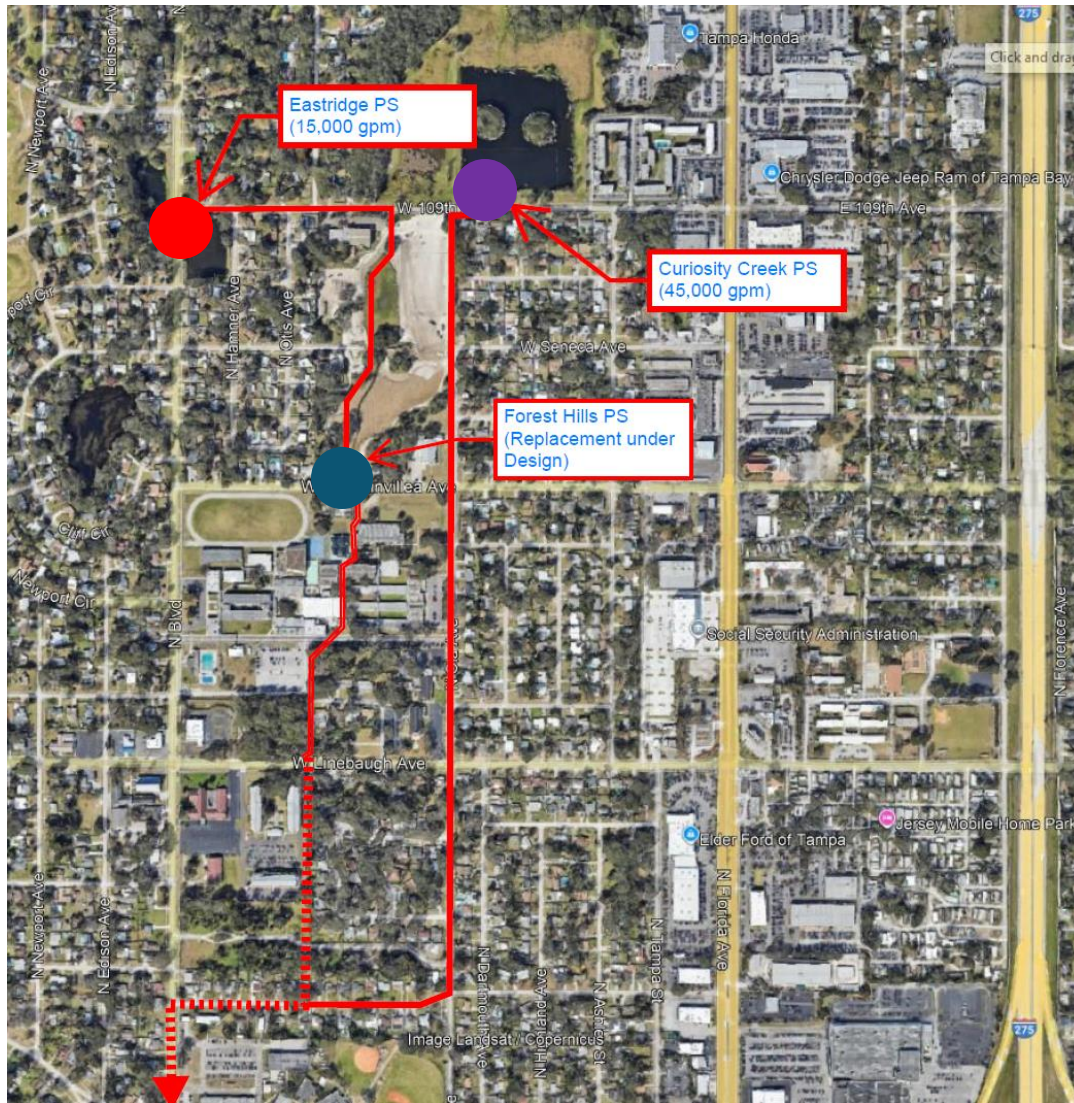
Milton Equivalent to **300-year Storm**

Annual Rainfall Average – **52.15 inches**

Understanding the Curiosity Creek Watershed



Curiosity Creek Watershed Assets



- **3 Pump Stations:**

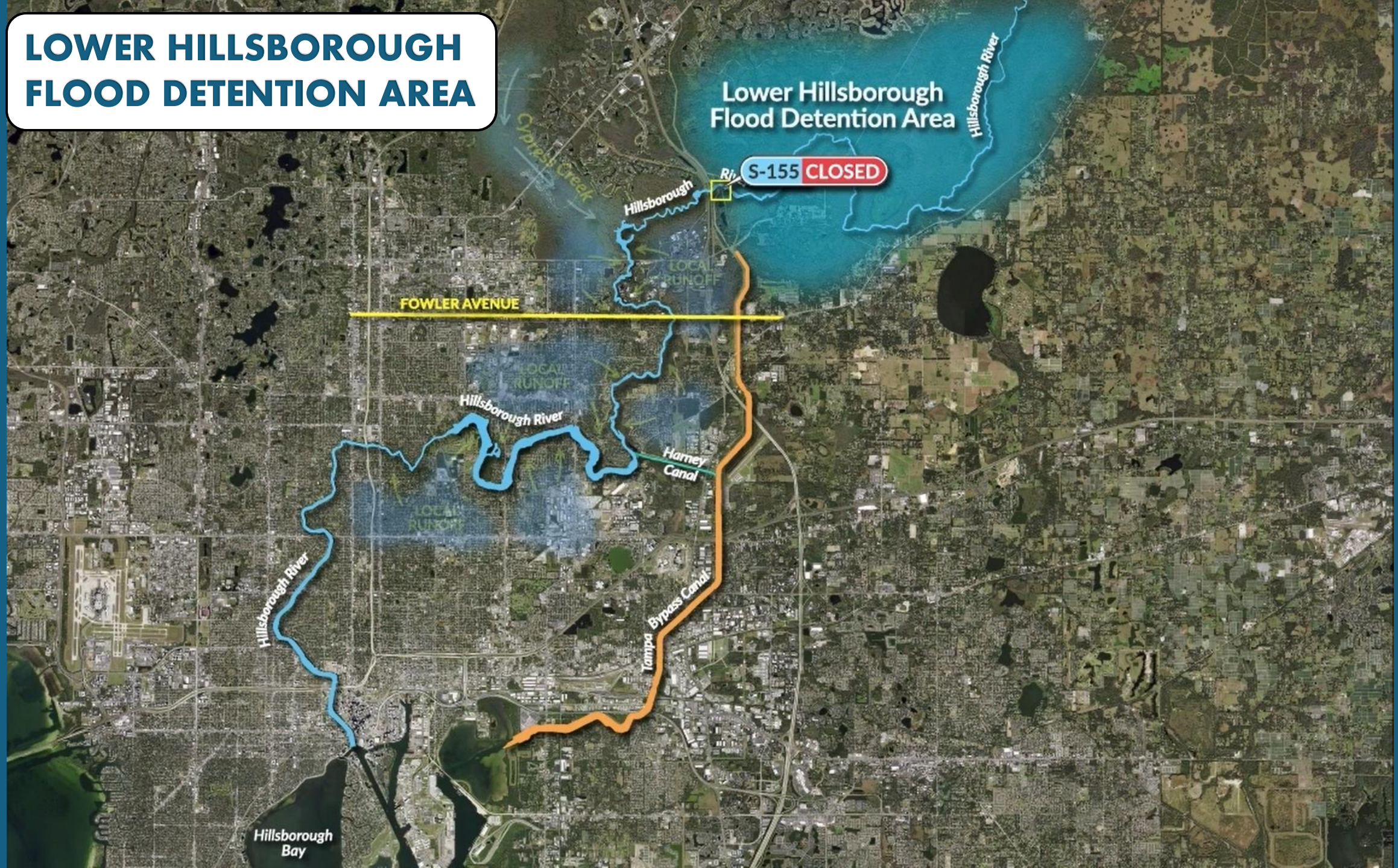
- Curiosity Creek

- East Ridge

- Bougainvillea

- Outfall to Hillsborough River

LOWER HILLSBOROUGH FLOOD DETENTION AREA



Timeline of Events – Pre Milton

- Stormwater Debris Clearing:
Stormwater crews relentlessly cleared drainage system “hot-spots” of debris ahead of Hurricane Milton (much of it left by Helene)
- Pond Pump Downs – morning of Oct 9:
 - Curiosity Creek was pumped down **6 feet** to add storage
 - East Ridge pumped down **3 feet**
 - Bougainvillea pumped down **5 feet******Pumps and generators were inspected at this time****
- **HURRICANE MILTON MAKES LANDFALL** – Oct 9.
 - Worst Impacts 8pm - midnight



Timeline of Events Cont.

- East Ridge lost power around 10pm Wednesday
- Curiosity Creek Lost Power around 10:30pm Wednesday
- Curiosity Creek Pumps operating on generator – Friday noon
- **Area Lakes and Ponds start cresting – Saturday**
- East Ridge on generator power – Sunday 3pm
- East Ridge on TECO power – Monday
- Curiosity Creek on TECO power – Monday
- Lake Eckels on TECO power – Monday



Hurricane Milton Impacts

- **Unprecedented Rainfall** (*300-year storm*)
 - Quarter of annual rainfall in **24 hours**
- **Confluence of Events**
 - Wettest September *on record* followed by Hurricane Helene
 - Ground **FULLY** saturated
- **Forrest Hills is a Closed Basin**
 - Closed basins are more sensitive to heavy rainfall
- **Power Outages**
- **System Designed for Much Smaller Storms**



W. 109th Ave **Friday**



W. 109th Ave. **Monday**

Next Steps

- Citywide Emergency Response Review
- Additional Generators
 - ~12 needed to supply EVERY pumping station that doesn't already have one.
 - cost estimate: \$500,000 per installed unit (ballpark)
- Watershed Master Plan
 - Projects and Policies
- **Community Conversations**



Homeowner & Renter Assistance

- File a claim with your private homeowners or rental insurance company.
- Federal Emergency Management Agency (FEMA)
 - www.disasterassistance.gov or download FEMA app.
- Visit local Disaster Recovery Center at **Town 'N Country Regional Public Library, located at 7606 Paula Dr #120, which will be open 9:30 a.m. - 5:30 p.m., Monday, Oct. 14, through Friday, Oct. 18.** This center is open to individuals, families, businesses, and nonprofits seeking assistance or needing help in completing applications after being impacted by Hurricanes Milton, Helene, or Debby.
- Another center will open on October 18th at the **David Barksdale Senior Center starting October 15 at 1pm through Tuesday, October 22.** The CRC will be open **7 AM to 7 PM.**
- Other assistance, like Disaster Unemployment Assistance, is also available to qualified individuals.

