



FY 24 Stormwater Service Assessment Program Report

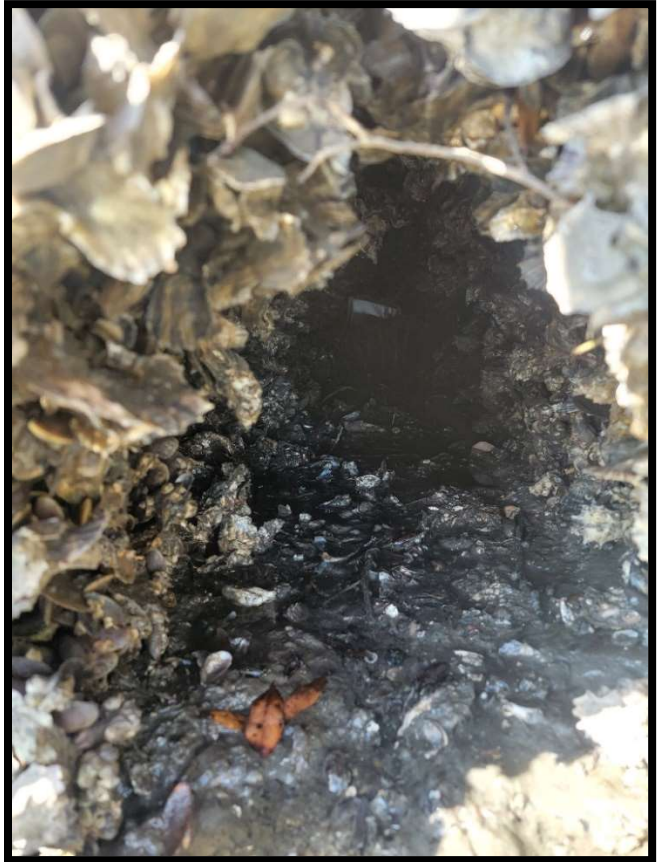
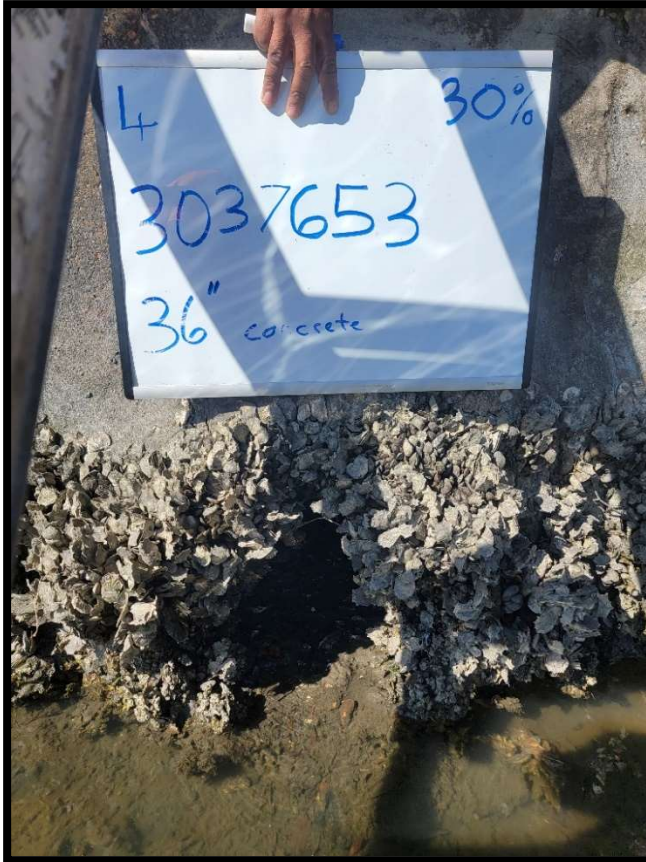
Tampa City Council Update No. 30 - June 2024

Maintenance activities are reported based on service level frequency. Below is a list of the primary maintenance categories that are being tracked. Along with service level cycle times, we have also provided maintenance statistics for the quarter.

Operations and Maintenance Activities	Pre Fee Service Levels	Fee Target Service Levels	2 nd Quarter FY24 & Year to Date Service Levels
			18.6-Year Cycle (2 nd Qtr.) 9.9-Year Cycle (Y.T.D)
			3-Year Cycle (2 nd Qtr.) 3-Year Cycle (Y.T.D)
			2.0-Year Cycle (2 nd Qtr.) 2.3-Year Cycle (Y.T.D)
			0.5-Year Cycle (2 nd Qtr.) 0.7-Year Cycle (Y.T.D)
			1-Year Cycle
			40-Day Cycle (2 nd Qtr.) 44-Day Cycle (Y.T.D)
Operations and Maintenance Activities	2 nd Quarter Maintenance Statistics		
	428 outfalls were inspected and maintained.		
	Preventative Maintenance provided to all thirteen (13) stormwater pump stations.		
	6,575 curb miles were swept, approximately 1,434 tons of debris removed.		

Activity Type	2 nd Quarter Department Activities Relating to Findings Pertaining to Ditches/Swales
	There is no new activity for project development to remedy historic activity.
Maintenance Activities	There are no locations that are currently being reviewed by Operations staff.

Palmetto Beach Outfall Cleaning



Before



After

Inlet Top Repair – 3502 W. Vasconia St.



Before



After

Inlet Top Repair Bayshore Blvd. @ W. Verne St.



Before



After

Rainbow Heights Inlet Top Cleaning

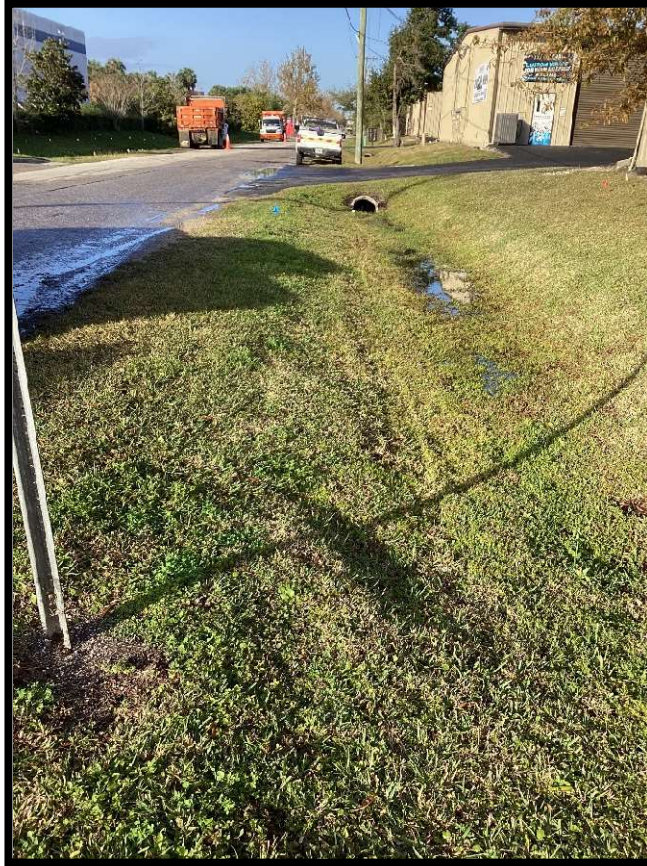


Before

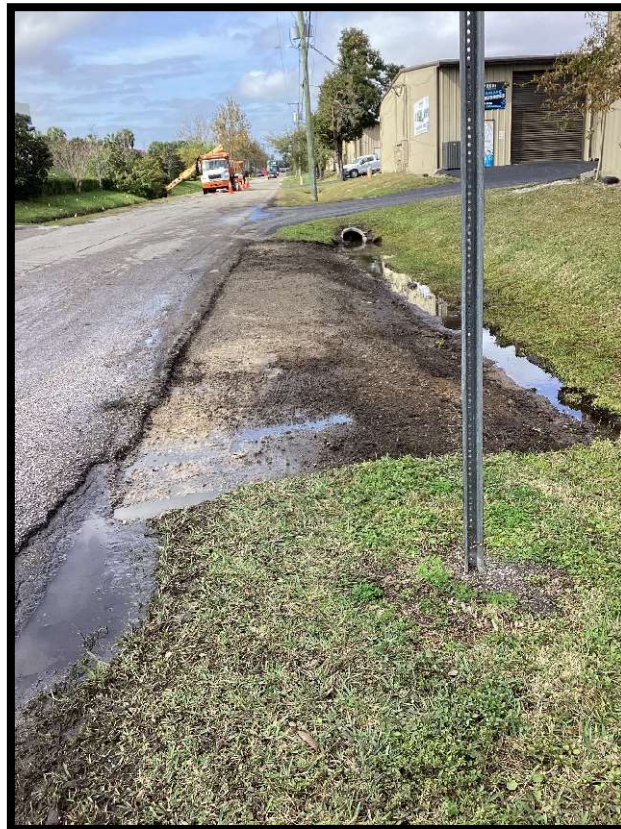


After

E. Acline Dr. Ditch Grading



Before



After