

NOTES

1. This plan is a preliminary concept for discussion purposes and subject to change.
2. Best efforts were made to observe conflicts through on-site review and available data, but there could be additional conflicts. All work subject to further utility investigation and locates.
3. Quantities, types, and locations of trees shown subject to change with final design and construction phases. Complexity of installing trees at various locations due to space constraints, utilities, removal of pavement, or other unlisted constraints may be prohibitive of planting.
4. Inclusion of trees at locations shown, is subject to City acceptance, phasing, and available funding.
5. Trees are intended to be installed in the City of Tampa ROW.

KEY

- Proposed Understory Tree
- Proposed Canopy Tree
- Proposed Palm
- Stormwater Mains
- Sewer Mains
- Water Mains
- Project Boundary
- Ybor City Historic District Boundary

KEY MAP

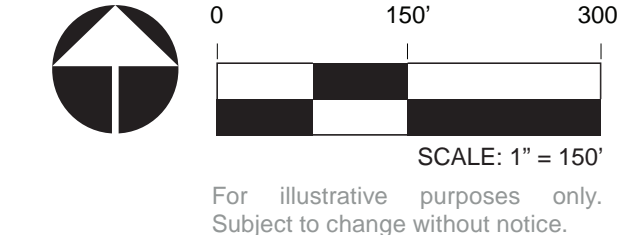


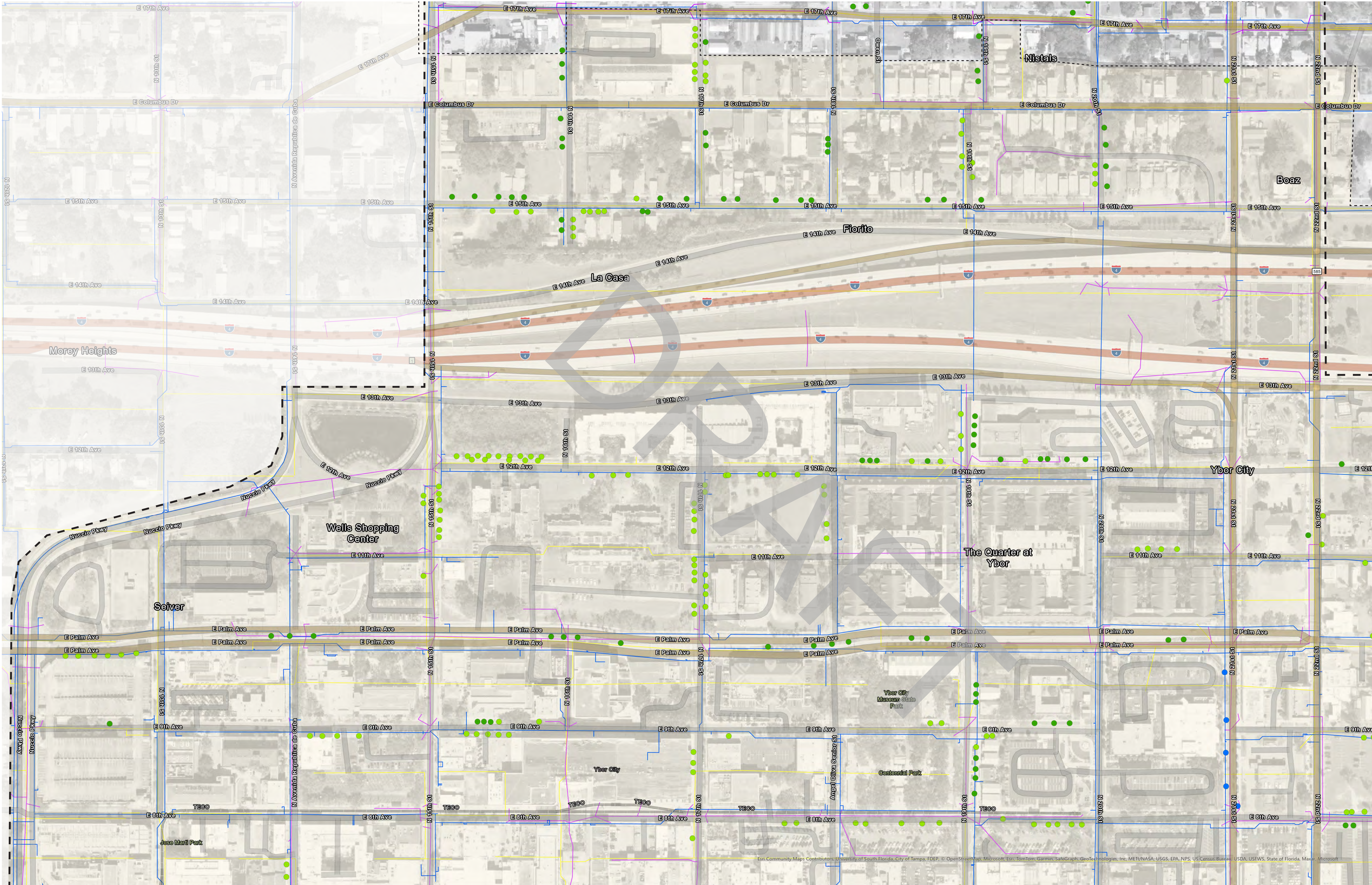
Copyright RVI



TREES FOR TAMPA - SCHEMATIC TREE MAP - HISTORIC YBOR, NORTH YBOR, EAST YBOR, AND GARY

- Ybor City
- April 14, 2025
- # 24004468
- City of Tampa





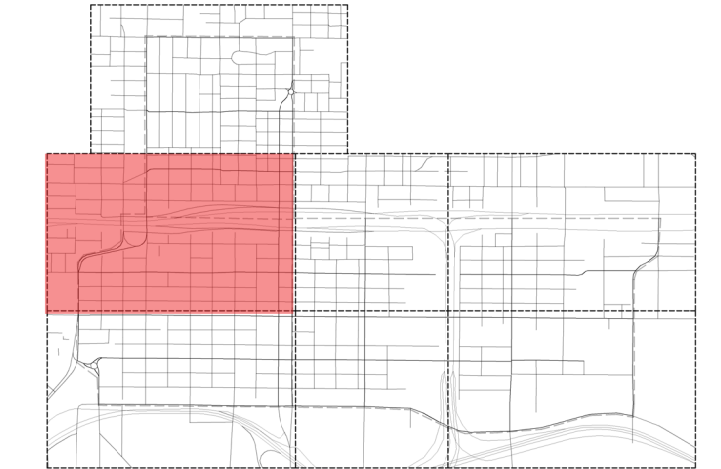
NOTES

- 1. This plan is a preliminary concept for discussion purposes and subject to change.
- 2. Best efforts were made to observe conflicts through on-site review and available data, but there could be additional conflicts. All work subject to further utility investigation and locates.
- 3. Quantities, types, and locations of trees shown subject to change with final design and construction phases. Complexity of installing trees at various locations due to space constraints, utilities, removal of pavement, or other unlisted constraints may be prohibitive of planting.
- 4. Inclusion of trees at locations shown, is subject to City acceptance, phasing, and available funding.
- 5. Trees are intended to be installed in the City of Tampa ROW.

KEY

- Proposed Understory Tree
- Proposed Canopy Tree
- Proposed Palm
- Stormwater Mains
- Sewer Mains
- Water Mains
- Project Boundary
- Ybor City Historic Distric Boundary

KEY MAP

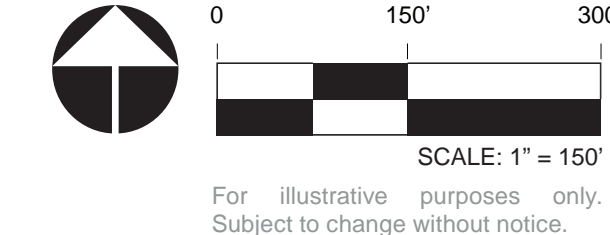


Copyright RVI



TREES FOR TAMPA - SCHEMATIC TREE MAP - HISTORIC YBOR, NORTH YBOR, EAST YBOR, AND GARY

- Ybor City
- April 14, 2025
- # 24004468
- City of Tampa





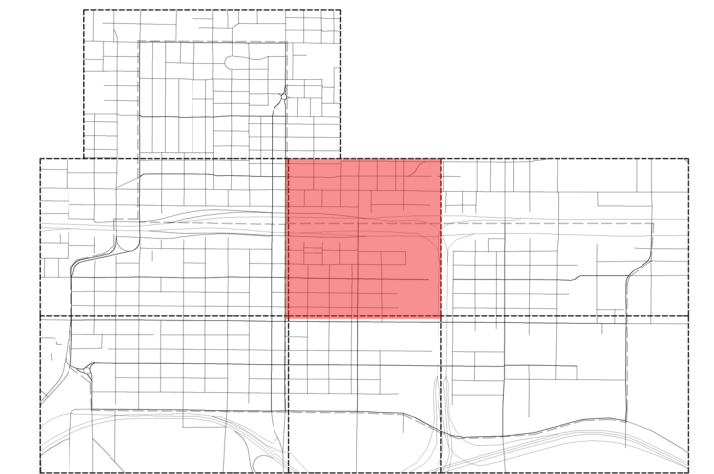
NOTES

- 1. This plan is a preliminary concept for discussion purposes and subject to change.
- 2. Best efforts were made to observe conflicts through on-site review and available data, but there could be additional conflicts. All work subject to further utility investigation and locates.
- 3. Quantities, types, and locations of trees shown subject to change with final design and construction phases. Complexity of installing trees at various locations due to space constraints, utilities, removal of pavement, or other unlisted constraints may be prohibitive of planting.
- 4. Inclusion of trees at locations shown, is subject to City acceptance, phasing, and available funding.
- 5. Trees are intended to be installed in the City of Tampa ROW.

KEY

- Proposed Understory Tree
- Proposed Canopy Tree
- Proposed Palm
- Stormwater Mains
- Sewer Mains
- Water Mains
- Project Boundary
- Ybor City Historic Distric Boundary

KEY MAP

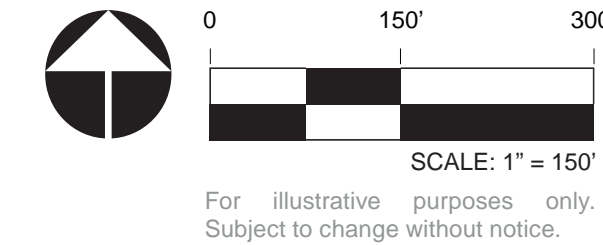


Copyright RVI



TREES FOR TAMPA - SCHEMATIC TREE MAP - HISTORIC YBOR, NORTH YBOR, EAST YBOR, AND GARY

- Ybor City
- April 14, 2025
- # 24004468
- City of Tampa





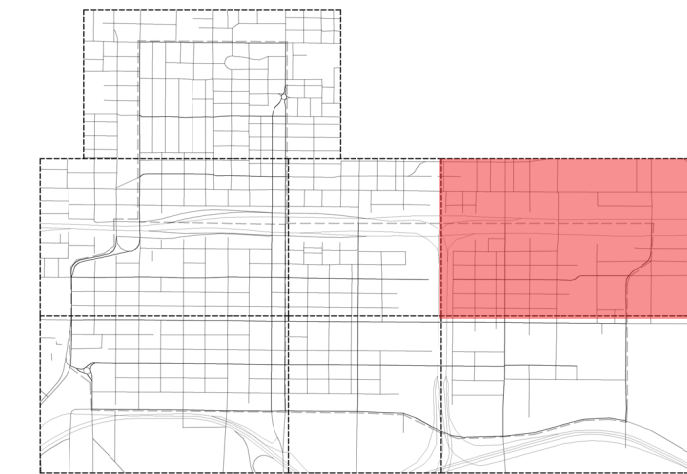
NOTES

1. This plan is a preliminary concept for discussion purposes and subject to change.
2. Best efforts were made to observe conflicts through on-site review and available data, but there could be additional conflicts. All work subject to further utility investigation and locates.
3. Quantities, types, and locations of trees shown subject to change with final design and construction phases. Complexity of installing trees at various locations due to space constraints, utilities, removal of pavement, or other unlisted constraints may be prohibitive of planting.
4. Inclusion of trees at locations shown, is subject to City acceptance, phasing, and available funding.
5. Trees are intended to be installed in the City of Tampa ROW.

KEY

- Proposed Understory Tree
- Proposed Canopy Tree
- Proposed Palm
- Stormwater Mains
- Sewer Mains
- Water Mains
- Project Boundary
- Ybor City Historic District Boundary

KEY MAP

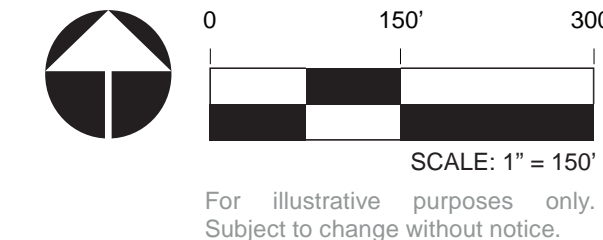


Copyright RVI



TREES FOR TAMPA - SCHEMATIC TREE MAP - HISTORIC YBOR, NORTH YBOR, EAST YBOR, AND GARY

- Ybor City
- April 14, 2025
- # 24004468
- City of Tampa





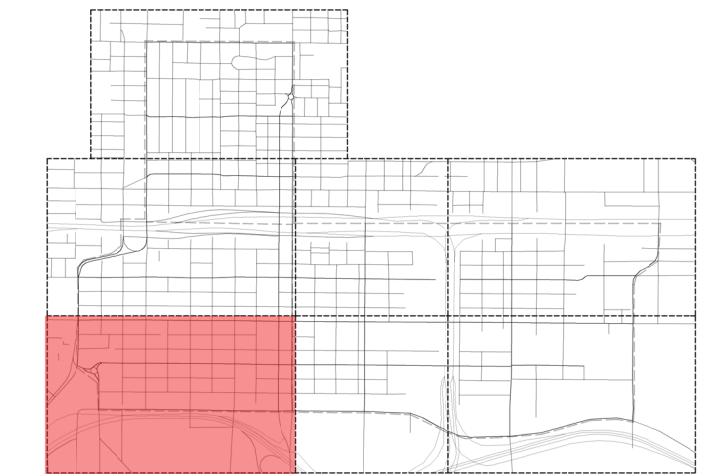
NOTES

1. This plan is a preliminary concept for discussion purposes and subject to change.
2. Best efforts were made to observe conflicts through on-site review and available data, but there could be additional conflicts. All work subject to further utility investigation and locates.
3. Quantities, types, and locations of trees shown subject to change with final design and construction phases. Complexity of installing trees at various locations due to space constraints, utilities, removal of pavement, or other unlisted constraints may be prohibitive of planting.
4. Inclusion of trees at locations shown, is subject to City acceptance, phasing, and available funding.
5. Trees are intended to be installed in the City of Tampa ROW.

KEY

- Proposed Understory Tree
- Proposed Canopy Tree
- Proposed Palm
- Stormwater Mains
- Sewer Mains
- Water Mains
- Project Boundary
- Ybor City Historic District Boundary

KEY MAP

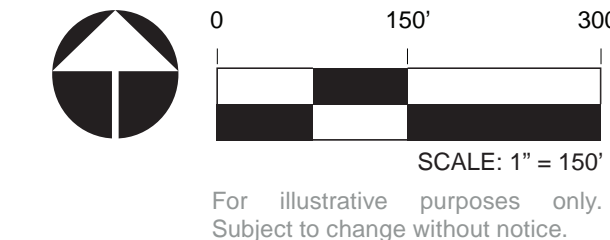


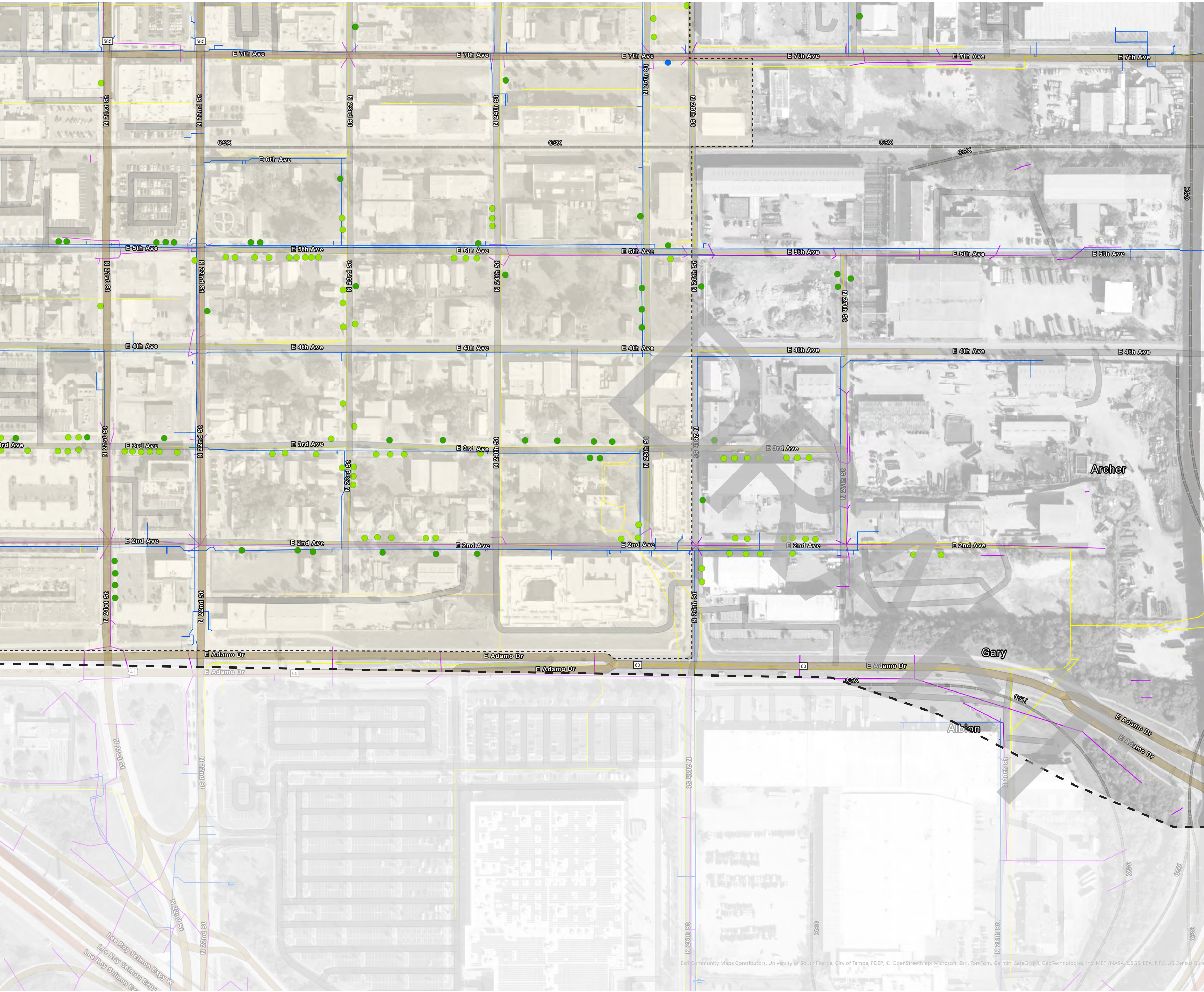
Copyright RVI



TREES FOR TAMPA - SCHEMATIC TREE MAP - HISTORIC YBOR, NORTH YBOR, EAST YBOR, AND GARY

- Ybor City
- April 14, 2025
- # 24004468
- City of Tampa





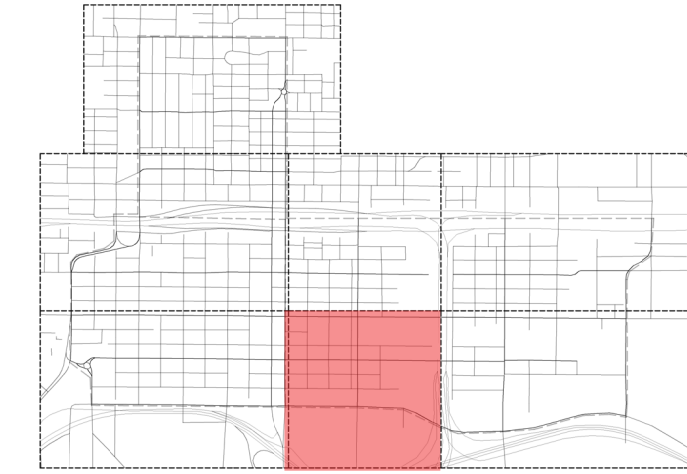
NOTES

- 1. This plan is a preliminary concept for discussion purposes and subject to change.
- 2. Best efforts were made to observe conflicts through on-site review and available data, but there could be additional conflicts. All work subject to further utility investigation and locates.
- 3. Quantities, types, and locations of trees shown subject to change with final design and construction phases. Complexity of installing trees at various locations due to space constraints, utilities, removal of pavement, or other unlisted constraints may be prohibitive of planting.
- 4. Inclusion of trees at locations shown, is subject to City acceptance, phasing, and available funding.
- 5. Trees are intended to be installed in the City of Tampa ROW.

KEY

- Proposed Understory Tree
- Proposed Canopy Tree
- Proposed Palm
- Stormwater Mains
- Sewer Mains
- Water Mains
- Project Boundary
- Ybor City Historic District Boundary

KEY MAP

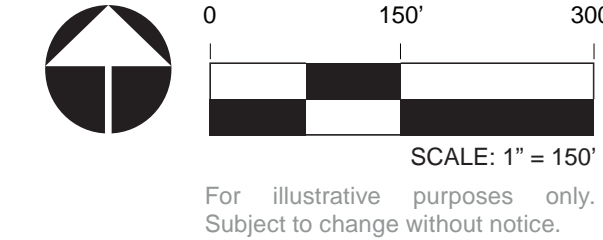


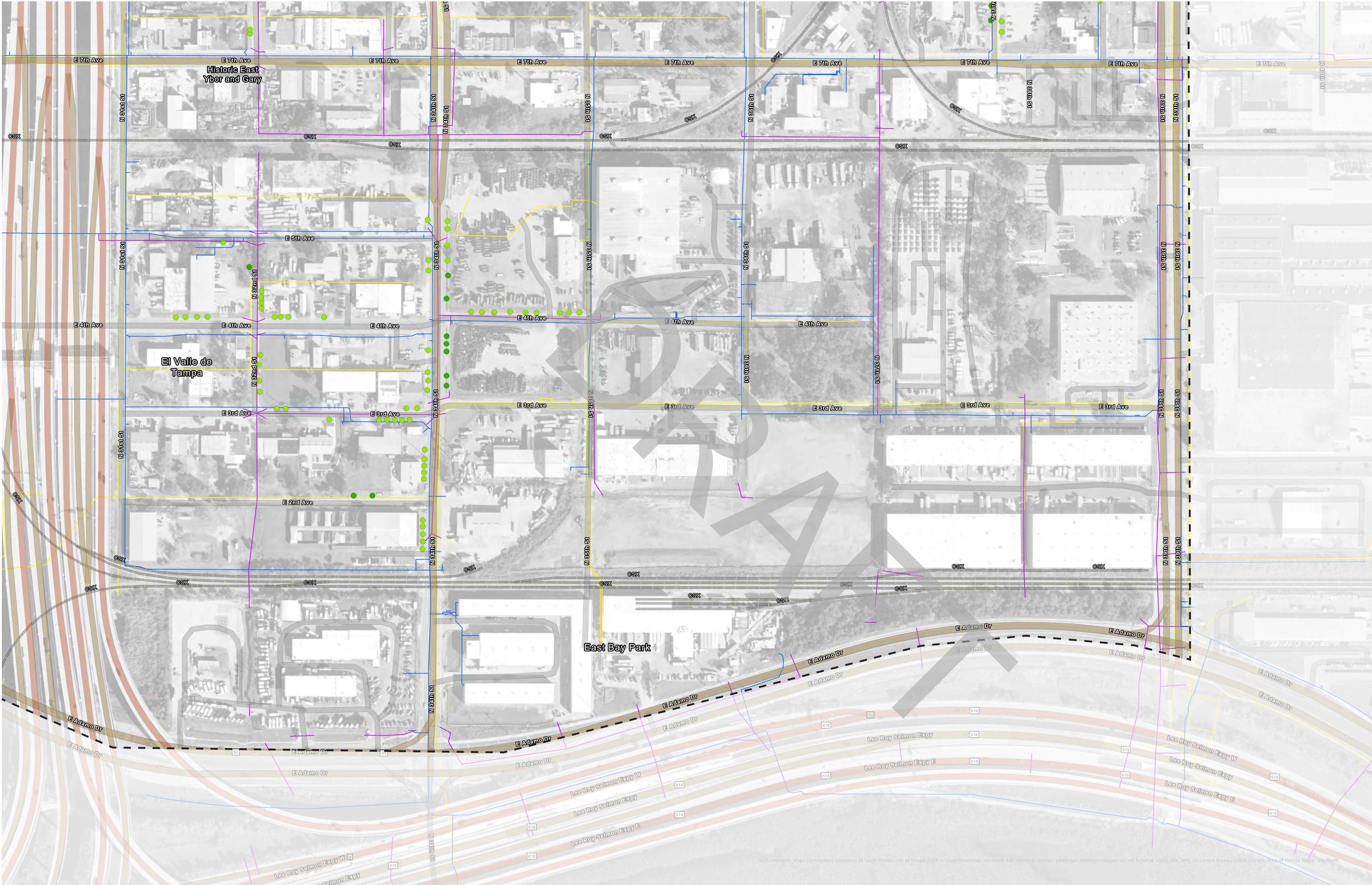
Copyright RVI



TREES FOR TAMPA - SCHEMATIC TREE MAP - HISTORIC YBOR, NORTH YBOR, EAST YBOR, AND GARY

- Ybor City
- April 14, 2025
- # 24004468
- City of Tampa





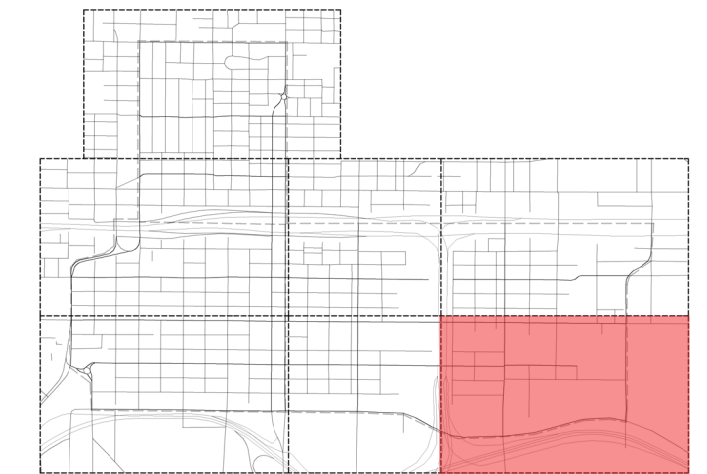
NOTES

1. This plan is a preliminary concept for discussion purposes and subject to change.
2. Best efforts were made to observe conflicts through on-site review and available data, but there could be additional conflicts. All work subject to further utility investigation and locates.
3. Quantities, types, and locations of trees shown subject to change with final design and construction phases. Complexity of installing trees at various locations due to space constraints, utilities, removal of pavement, or other unlisted constraints may be prohibitive of planting.
4. Inclusion of trees at locations shown, is subject to City acceptance, phasing, and available funding.
5. Trees are intended to be installed in the City of Tampa ROW.

KEY

- Proposed Understory Tree
- Proposed Canopy Tree
- Proposed Palm
- Stormwater Mains
- Sewer Mains
- Water Mains
- Project Boundary
- Ybor City Historic District Boundary

KEY MAP



Copyright RVI



TREES FOR TAMPA - SCHEMATIC TREE MAP - HISTORIC YBOR, NORTH YBOR, EAST YBOR, AND GARY

- Ybor City
- April 14, 2025
- # 24004468
- City of Tampa

