

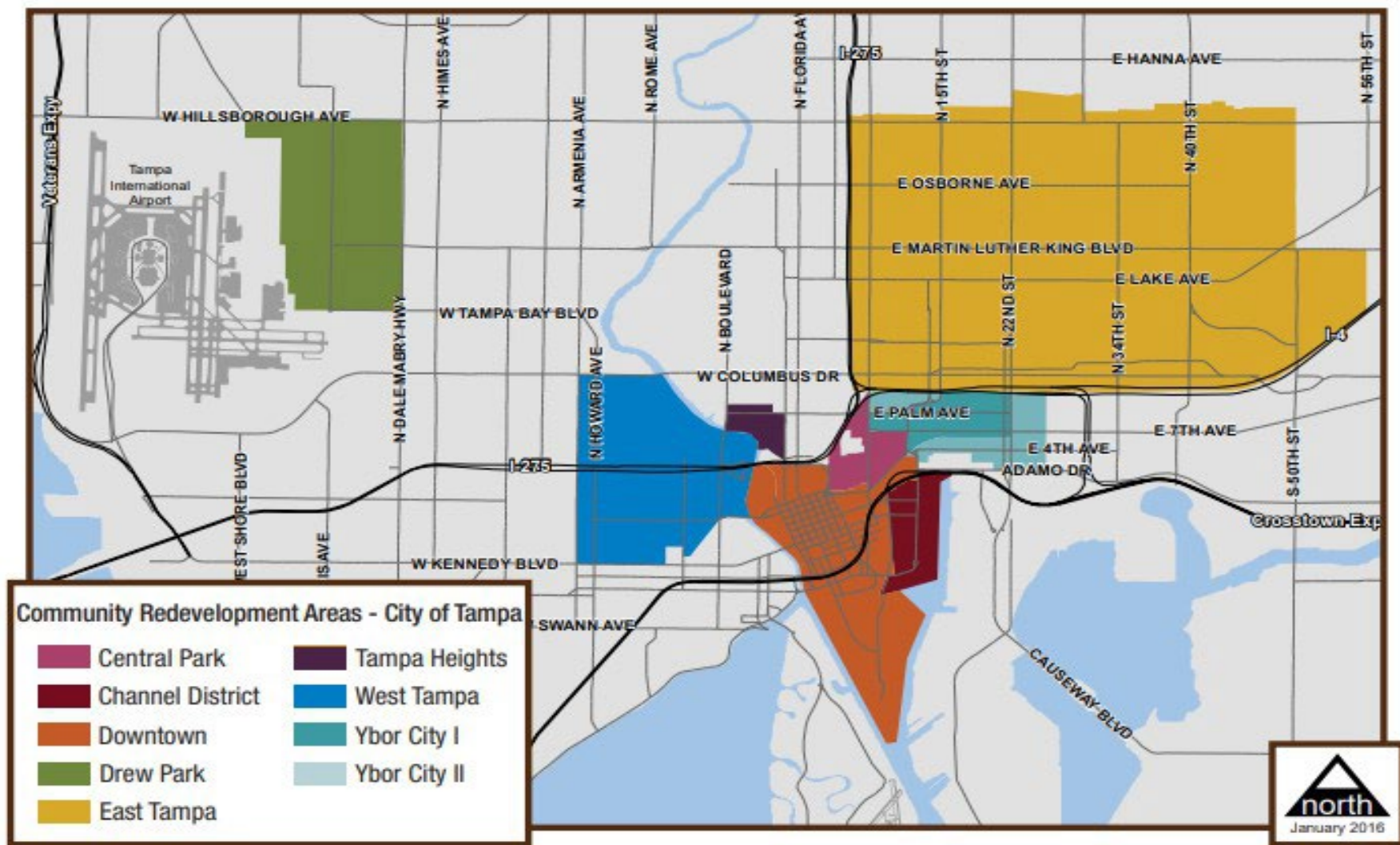
# TAMPACRA

STRENGTHENING COMMUNITIES

## FY26 BUDGET

COMMUNITY REDEVELOPMENT AGENCY

# COMMUNITY REDEVELOPMENT AREAS



TAMPA  
CRA

STRENGTHENING  
COMMUNITIES

# TAMPACRA

## CENTRAL PARK

- **143 acres**
  - **Est. 2006**
  - **Exp. 2036**
- **FY26 Increment Revenue**
  - **\$2,015,250**
  - **43% increase**



# TAMPACRA

## CENTRAL PARK

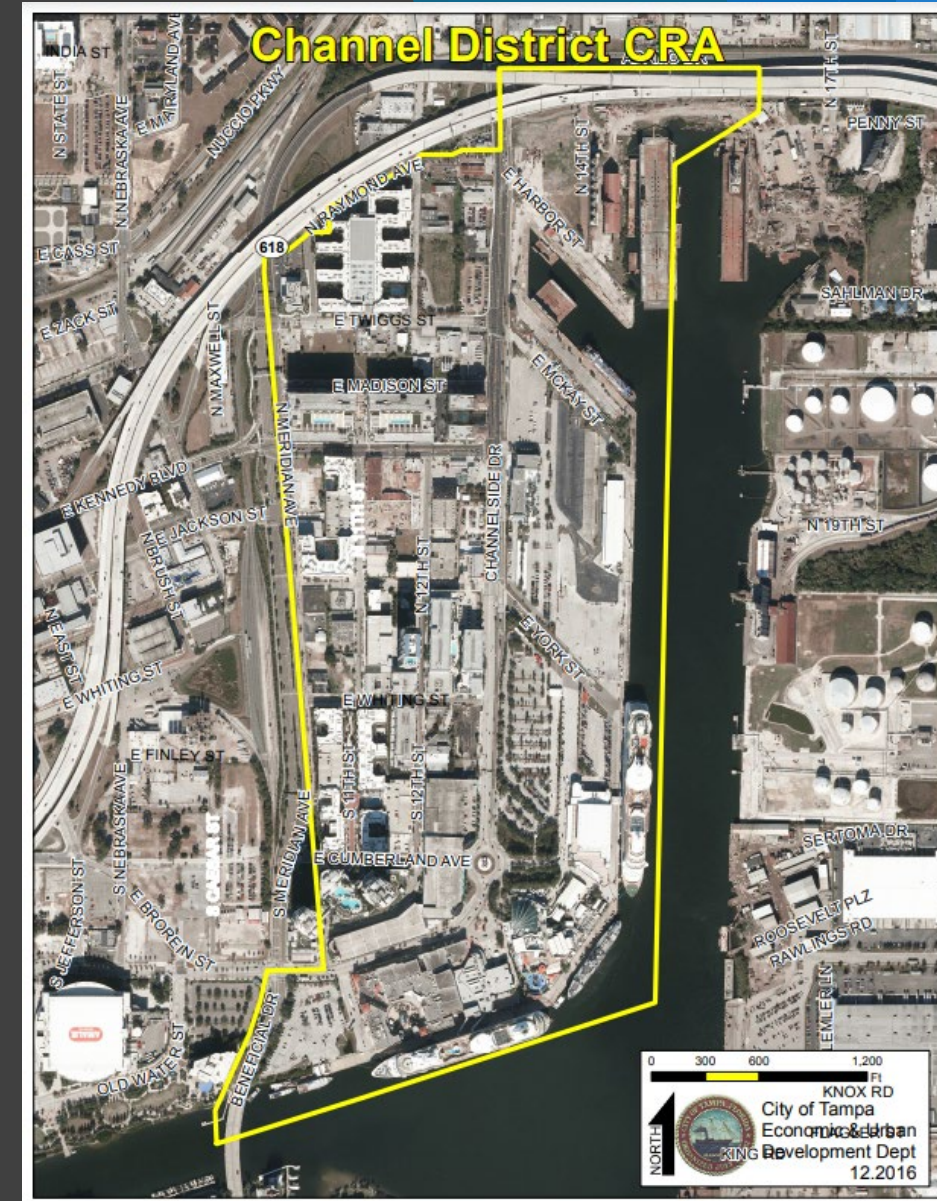
Central Park FY26 Budget	
I. Operations & Administration	\$180,099
II. Professional Services	\$0
III. Communications and Outreach	\$2,000
IV. Redevelopment Investment	\$165,000
V. Affordable Housing Initiatives	\$604,575
VI. Capital Projects and Infrastructure	\$1,063,576
VII. Transportation & Mobility	\$0
VIII. Community Policing	\$0
IX. Historic Preservation	\$0
X. Quality of Life & Community Improvement	\$0
<b>Total</b>	<b>\$2,015,250</b>



# TAMPACRA

## CHANNEL DISTRICT

- 221 acres
- Est. 2003
- Exp. 2034
- FY26 Increment Revenue
  - \$13,461,774
  - 17% increase



# TAMPACRA

## CHANNEL DISTRICT

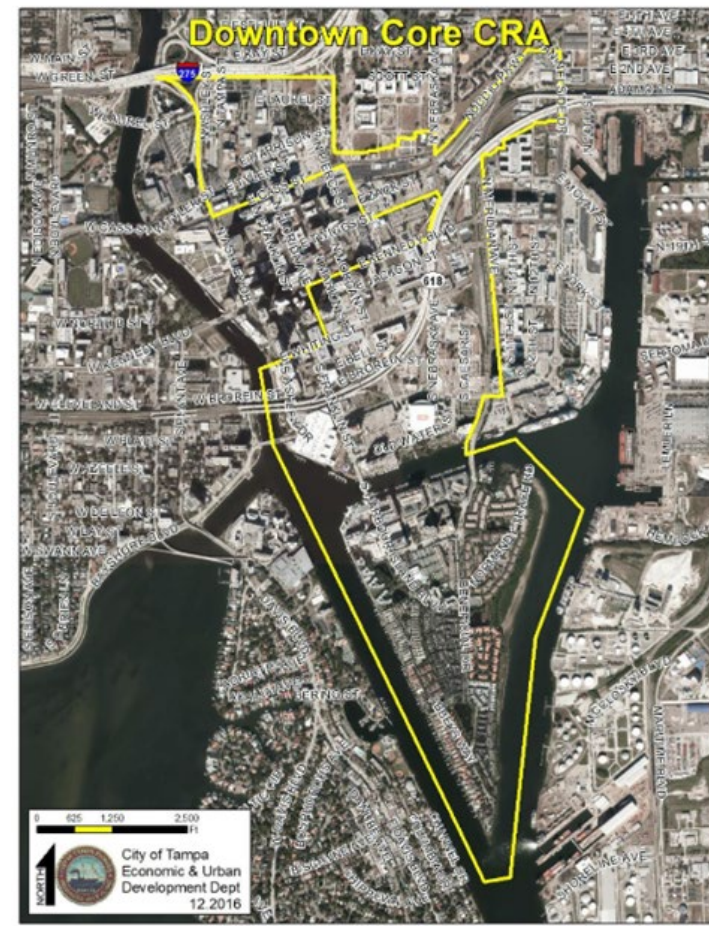
Channel District FY26 Budget	
I. Operations & Administration	\$896,143
II. Professional Services	\$0
III. Communications and Outreach	\$45,000
IV. Redevelopment Investment	\$0
V. Affordable Housing Initiatives	\$4,038,532
VI. Capital Projects and Infrastructure	\$8,203,849
VII. Transportation & Mobility	\$278,250
VIII. Community Policing	\$0
IX. Historic Preservation	\$0
X. Quality of Life & Community Improvement	\$0
<b>Total</b>	<b>\$13,461,774</b>



# TAMPACRA

## DOWNTOWN

- 870 acres
- Core est. 1983
- Non-Core 1988
- Exp. 2043
- FY26 Increment Revenue
  - \$29,924,853
  - 6% increase



# TAMPACRA

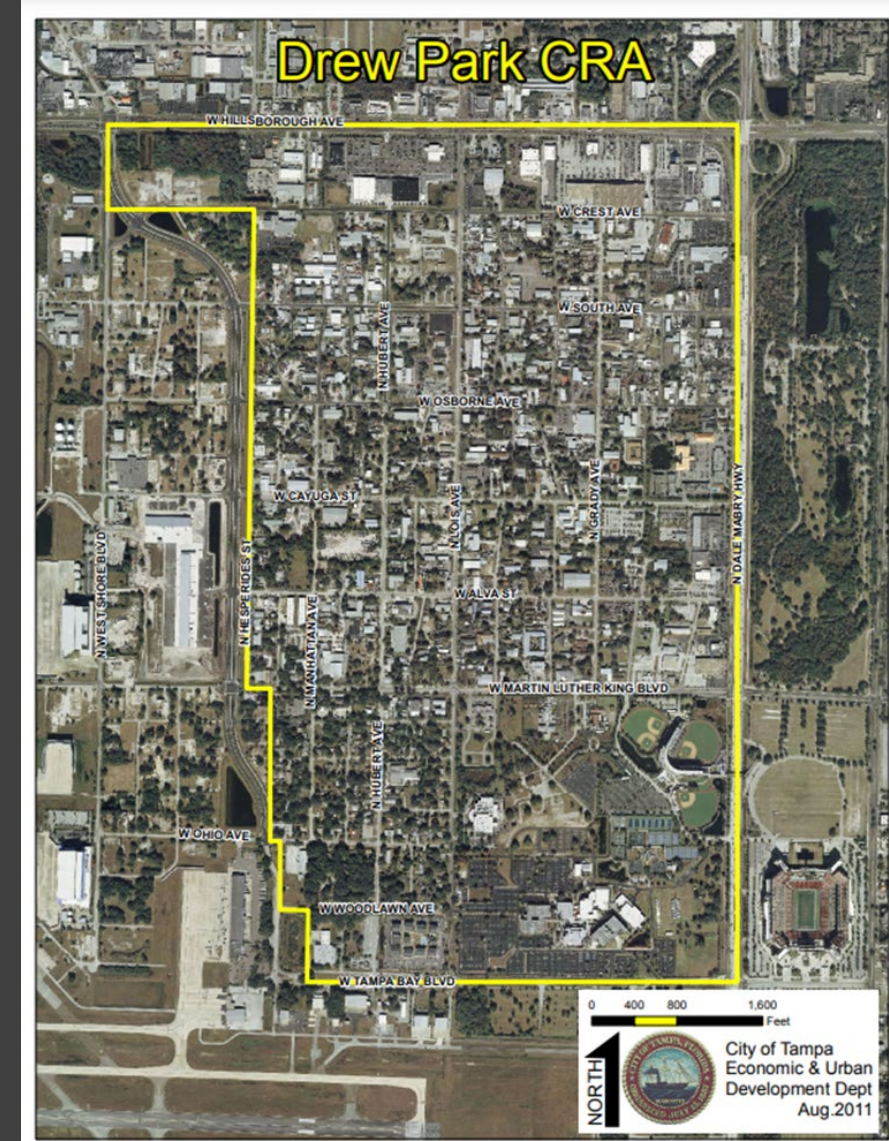
## DOWNTOWN

### Downtown District FY26 Budget

I. Operations & Administration	\$1,704,245
II. Professional Services	\$0
III. Communications and Outreach	\$0
IV. Redevelopment Investment	\$0
V. Affordable Housing Initiatives	\$8,977,456
VI. Capital Projects and Infrastructure	\$14,241,171
VII. Transportation & Mobility	\$284,500
VIII. Community Policing	\$0
IX. Historic Preservation	\$500,000
X. Quality of Life & Community Improvement	\$0
XI. Debt Service	\$4,217,481
<b>Total</b>	<b>\$29,924,853</b>



# DREW PARK



# TAMPACRA

## DREW PARK

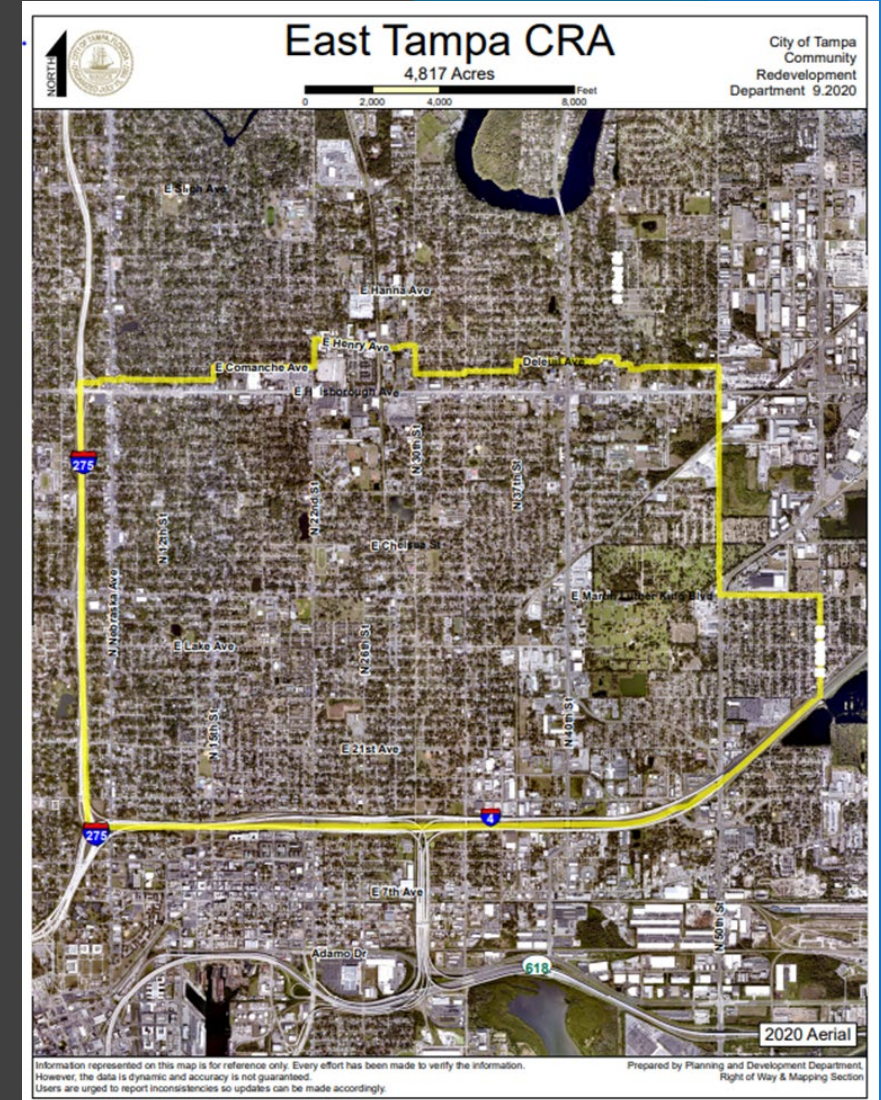
Drew Park FY26 Budget	
I. Operations & Administration	\$281,066
II. Professional Services	\$0
III. Communications and Outreach	\$0
IV. Redevelopment Investment	\$0
V. Affordable Housing Initiatives	\$1,085,175
VI. Capital Projects and Infrastructure	\$2,243,011
VII. Transportation & Mobility	\$0
VIII. Community Policing	\$0
IX. Historic Preservation	\$0
X. Quality of Life & Community Improvement	\$8,000
<b>Total</b>	<b>\$3,617,252</b>



# TAMPACRA

## EAST TAMPA

- 4,817 acres
  - Est. 2003
  - Exp. 2034
- FY26 Increment Revenue
  - \$14,627,447
  - 12% increase





# TAMPACRA

## EAST TAMPA

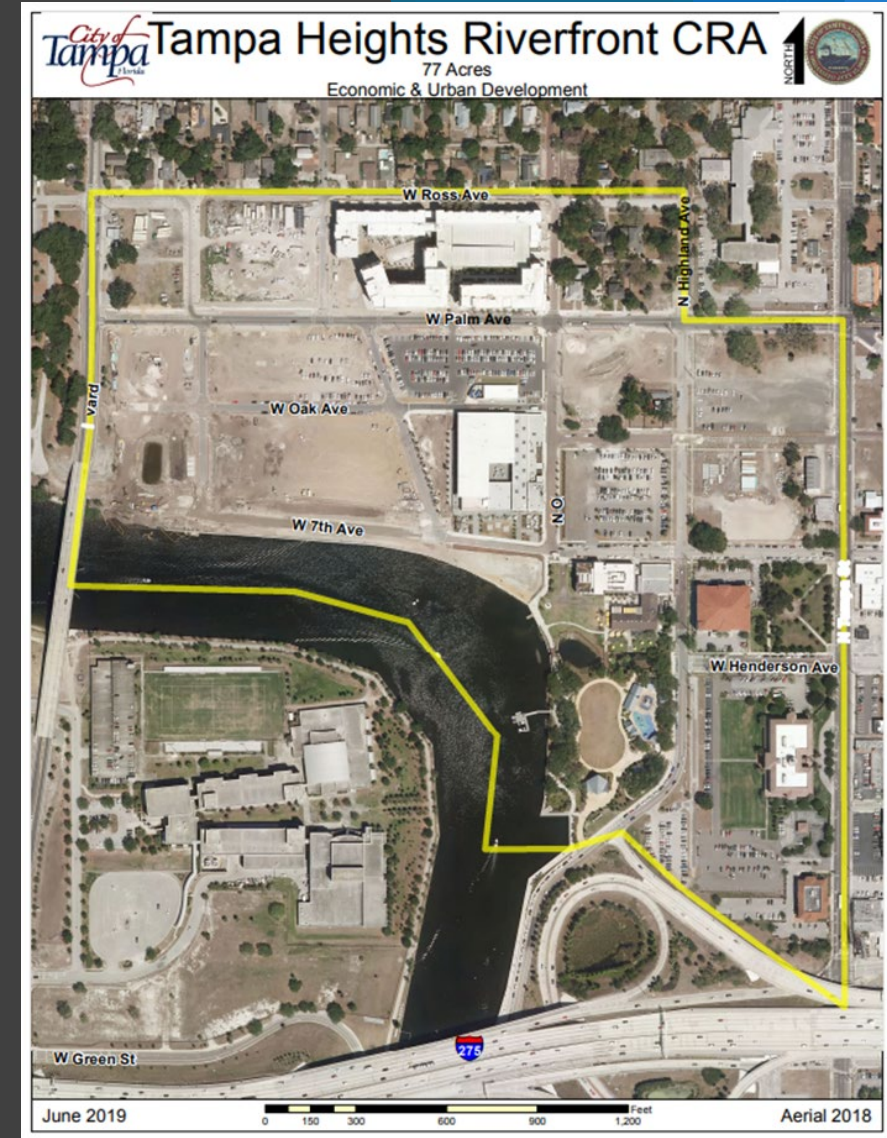
### East Tampa FY26 Budget

I. Operations & Administration	\$1,024,498
II. Professional Services	\$0
III. Communications and Outreach	\$0
IV. Redevelopment Investment	\$750,000
V. Affordable Housing Initiatives	\$6,750,000
VI. Capital Projects	\$5,799,347
VII. Transportation & Mobility	\$0
VIII. Community Policing	\$178,602
IX. Historic Preservation	\$50,000
X. Quality of Life & Community Improvement	\$75,000
<b>Total</b>	<b>\$14,627,447</b>

# TAMPACRA

## TAMPA HEIGHTS RIVERFRONT

- **77 acres**
  - **Est. 2005**
  - **Exp. 2043**
- **FY26 Increment Revenue**
- **Based on proposed millage**
  - **\$2,230,971**
  - **6% increase**



# TAMPACRA

## TAMPA HEIGHTS RIVERFRONT

### Tampa Heights Riverfront FY26 Budget

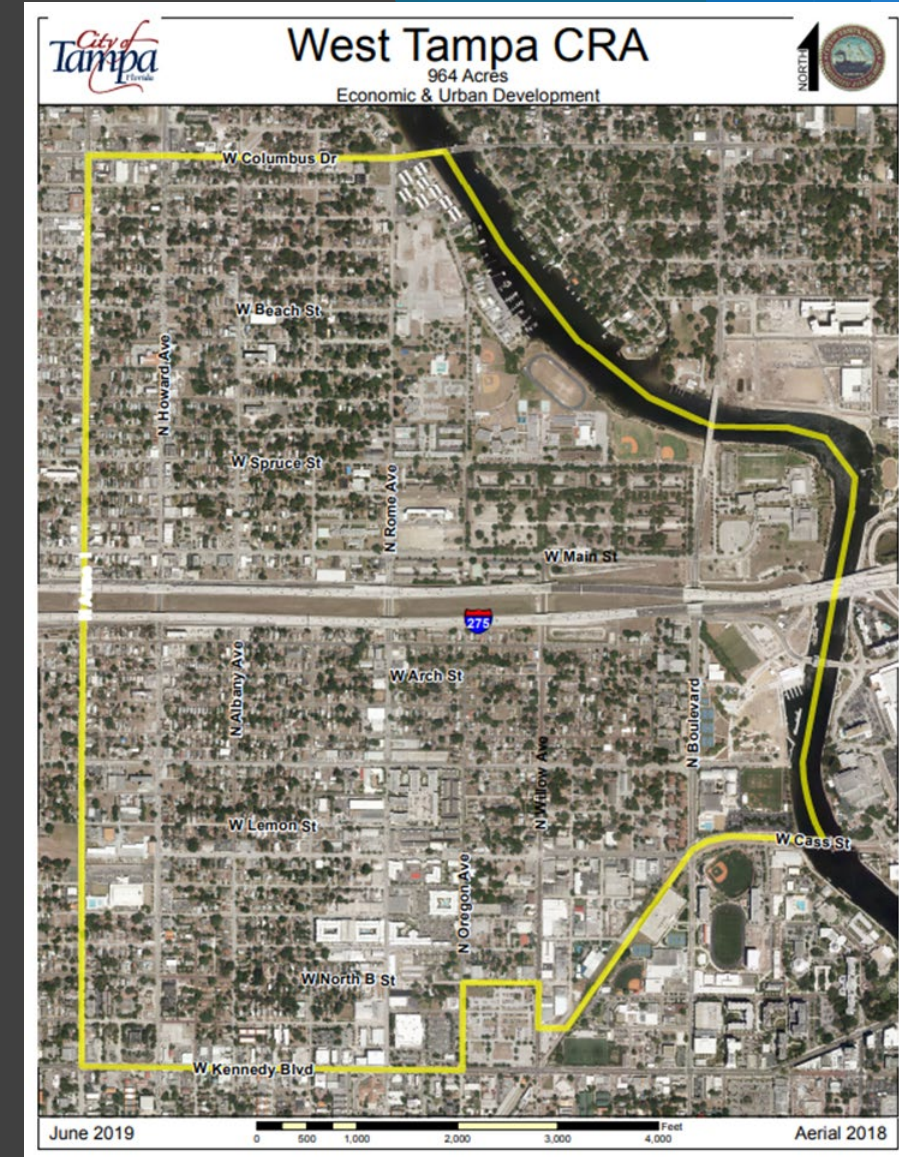
I. Operations & Administration	\$228,917
II. Professional Services	\$0
III. Communications and Outreach	\$0
IV. Redevelopment Investment	\$0
V. Affordable Housing Initiatives	\$335,772
VI. Capital Projects and Infrastructure	\$1,666,282
VII. Transportation & Mobility	\$0
VIII. Community Policing	\$0
IX. Historic Preservation	\$0
X. Quality of Life & Community Improvement	\$0
<b>Total</b>	<b>\$2,230,971</b>



# TAMPACRA

## WEST TAMPA

- 964 acres
  - Est. 2015
  - Exp. 2043
- FY26 Increment Revenue
- Based on proposed millage
  - \$9,688,479
  - 10% increase



# TAMPACRA

## WEST TAMPA

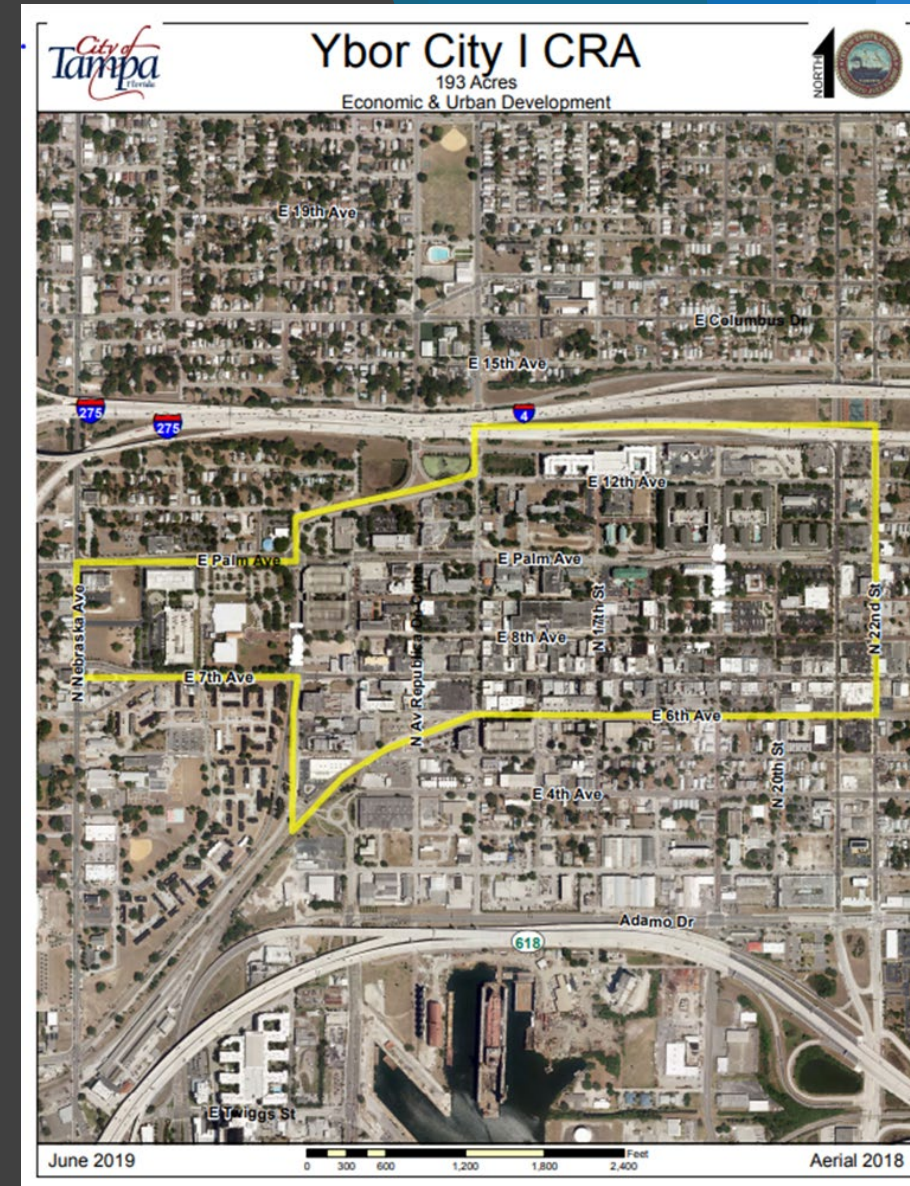
West Tampa FY26 Budget	
I. Operations & Administration	\$697,206
II. Professional Services	\$0
III. Communications and Outreach	\$0
IV. Redevelopment Investment	\$390,489
V. Affordable Housing Initiatives	\$2,906,544
VI. Capital Projects and Infrastructure	\$2,394,240
VII. Transportation & Mobility	\$3,300,000
VIII. Community Policing	\$0
IX. Historic Preservation	\$0
X. Quality of Life & Community Improvement	\$0
<b>Total</b>	<b>\$9,688,479</b>



# TAMPACRA

## YBOR CITY

- 193 acres
  - Est. 1987
  - Exp. 2034
- FY26 Increment Revenue
  - \$4,270,475
  - 10% increase





# TAMPACRA

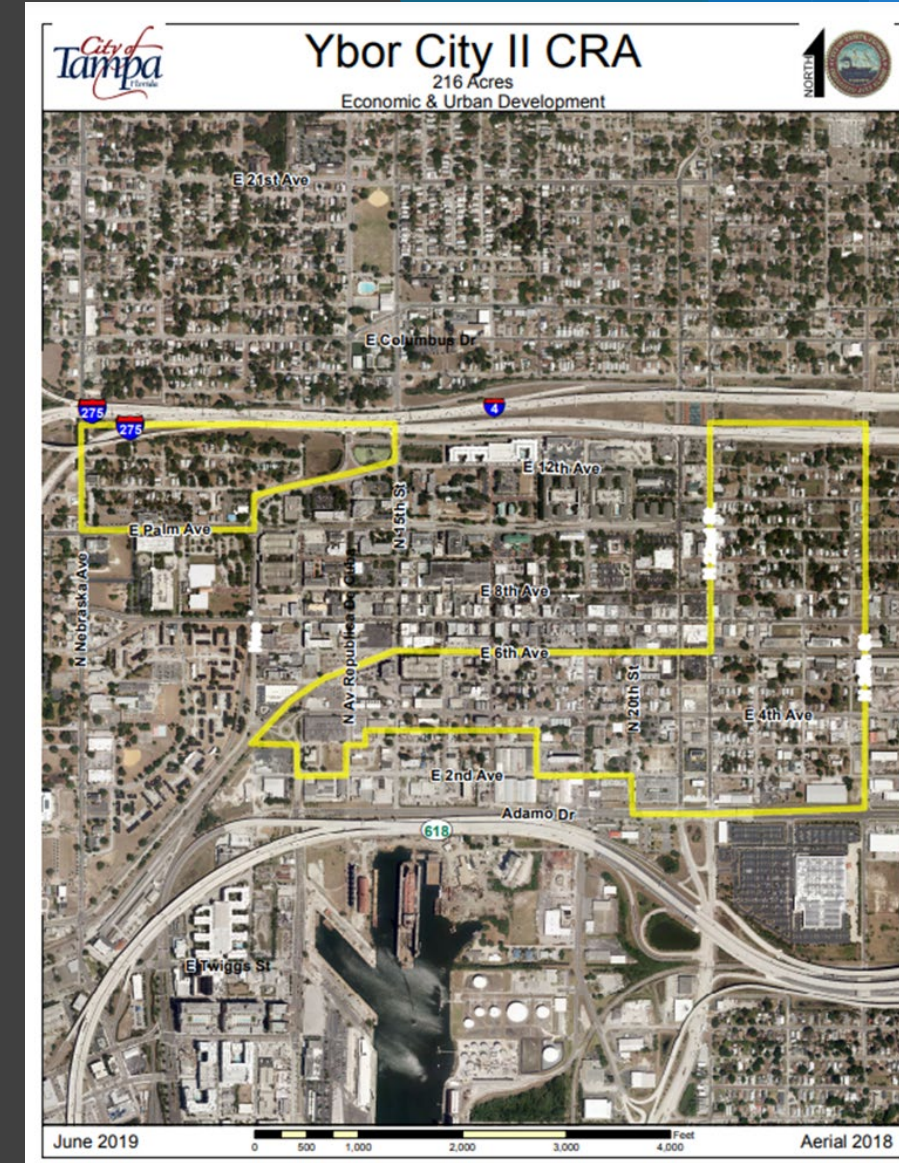
## YBOR CITY

Ybor I FY26 Budget	
I. Operations & Administration	\$349,797
II. Professional Services	\$0
III. Communications and Outreach	\$30,000
IV. Redevelopment Investment	\$30,000
V. Affordable Housing Initiatives	\$1,281,143
VI. Capital Projects and Infrastructure	\$1,225,742
VII. Transportation & Mobility	\$188,000
VIII. Community Policing	\$20,000
IX. Historic Preservation	\$0
X. Quality of Life & Community Improvement	\$1,145,793
<b>Total</b>	<b>\$4,270,475</b>

# TAMPACRA

## YBOR CITY

- 216 acres
- Est. 2004
- Exp. 2034
- FY26 Increment Revenue
  - \$2,108,157
  - 11% increase



# TAMPACRA

## YBOR CITY

### Ybor II FY26 Budget

I. Operations & Administration	\$155,424
II. Professional Services	\$50,000
III. Communications and Outreach	\$20,000
IV. Redevelopment Investment	\$63,544
V. Affordable Housing Initiatives	\$632,447
VI. Capital Projects and Infrastructure	\$413,731
VII. Transportation & Mobility	\$37,000
VIII. Community Policing	\$10,000
IX. Historic Preservation	\$0
X. Quality of Life & Community Improvement	\$726,011
<b>Total</b>	<b>\$2,108,157</b>





# TAMPACRA

STRENGTHENING COMMUNITIES