



**Mobility Department**

**Operations Division**

**Paving Report**

**May 2026**

## Paving Calls for Service

Calls For Service - Calendar Year	Totals - 2025	Totals - 2026
Street Resurfacing / Repair Requests	304	112
Potholes (FIF)	1,898	509
Delaminations (FIF)	43	32
Edge of Pavement (FIF)	57	21
<b>Total Calls for Service</b>	<b>2,302</b>	<b>674</b>
*includes phone calls, emails, and Tampa Connect messages		
Calls by Month	Totals - 2024	Totals - 2026
January	211	143
February	193	106
March	260	143
April	158	177
May	145	105
June	174	
July	286	
August	221	
September	287	
October	158	
November	92	
December	117	
<b>Total Calls for Service</b>	<b>2,302</b>	<b>674</b>
<b>Average Calls Per Month</b>	<b>191</b>	<b>135</b>

Calls For Service - May 2026	Totals
Street Resurfacing / Repair Requests	16
Potholes (FIF)	78
Delaminations (FIF)	8
Edge of Pavement (FIF)	3
<b>Total Calls for Service</b>	<b>105</b>
*includes phone calls, emails, and Tampa Connect messages	



# May 2026 In-house Paving Report

## Tampa City Council Update

There are approximately 1,212 miles of City-owned roadways. Projects are scheduled each year for design and resurfacing in accordance with approved funding levels. Resurfacing roadways enhances safety and the level of service for the traveling public. Below is a list of the primary maintenance categories that are being tracked. We have provided maintenance statistics for the month along with the maintenance locations.

### May Work Locations and Descriptions

Sunset Park (San Jose St.) (In-house)

N 46<sup>th</sup> St at Yukon (In-house)

### May Work Accomplishments

Maint. Activities	Accomplishment	Unit of Measure	Description
Paving	7.24 1,801	Lane Miles (In-House) Tons of Asphalt	In-house and contractor paving projects are selected with coordination of Engineering. Asphalt is removed and paved back.
Potholes (FIF)	150 12.13	Each Tons of Asphalt	Holes in the asphalt exposing the base material underneath.
Edge of Pavement Repair (FIF)	1,292 8.3	Square Feet Tons of Asphalt	Edge of Pavement repairs are where the asphalt breaks up along the edge and becomes a drop off.
Delaminations (FIF)	2,726 8.84	Square Feet Tons of Asphalt	Delaminations are where the asphalt is breaking away exposing the next layer of asphalt but not exposing the base.
Alley Maintenance	0	Square Feet	Alley maintenance can include both new asphalt and crushed asphalt.
Asphalt Curb Repair	166	Linear Feet	Asphalt curb repairs occur when vehicles run over the curb breaking it up.
Utility Cut Outs for Utility Depts.	11.56	Tons of Asphalt	Utility cut out repairs. ~3/4 of a ton per location.

## June Work Locations And Descriptions

Miscellaneous paving work. This includes thermoplastic pavement marking installations on various projects.

E, Bouganvillea Ave @ N. Central Ave. - PLANNED

E. Bouganvillea Ave @ N. Nebraska Ave. - PLANNED

N. Rome Ave @ W. Waters Ave - PLANNED

N. Willow Ave @ W. Waters Ave - PLANNED

**CALLS FOR SERVICE SHOULD BE DIRECTED TO**

**813-274-3101 or 813-274-FAST**

**24/7**

**N. 46<sup>th</sup> St. at Yukon St. (In-House)**



**N. 46<sup>th</sup> St. at Yukon St. (In-House) (cont.)**



**Sunset Park (San Jose St.) (In-house)**



**Sunset Park (San Jose St.) (In-house) (cont.)**



**Asphalt Curb Installation – 319 W. Giddens Ave.**



**Before**



**After**

**Utility Cut Out – Stormwater Cave-in – N. 34<sup>th</sup> St.**



**Before**



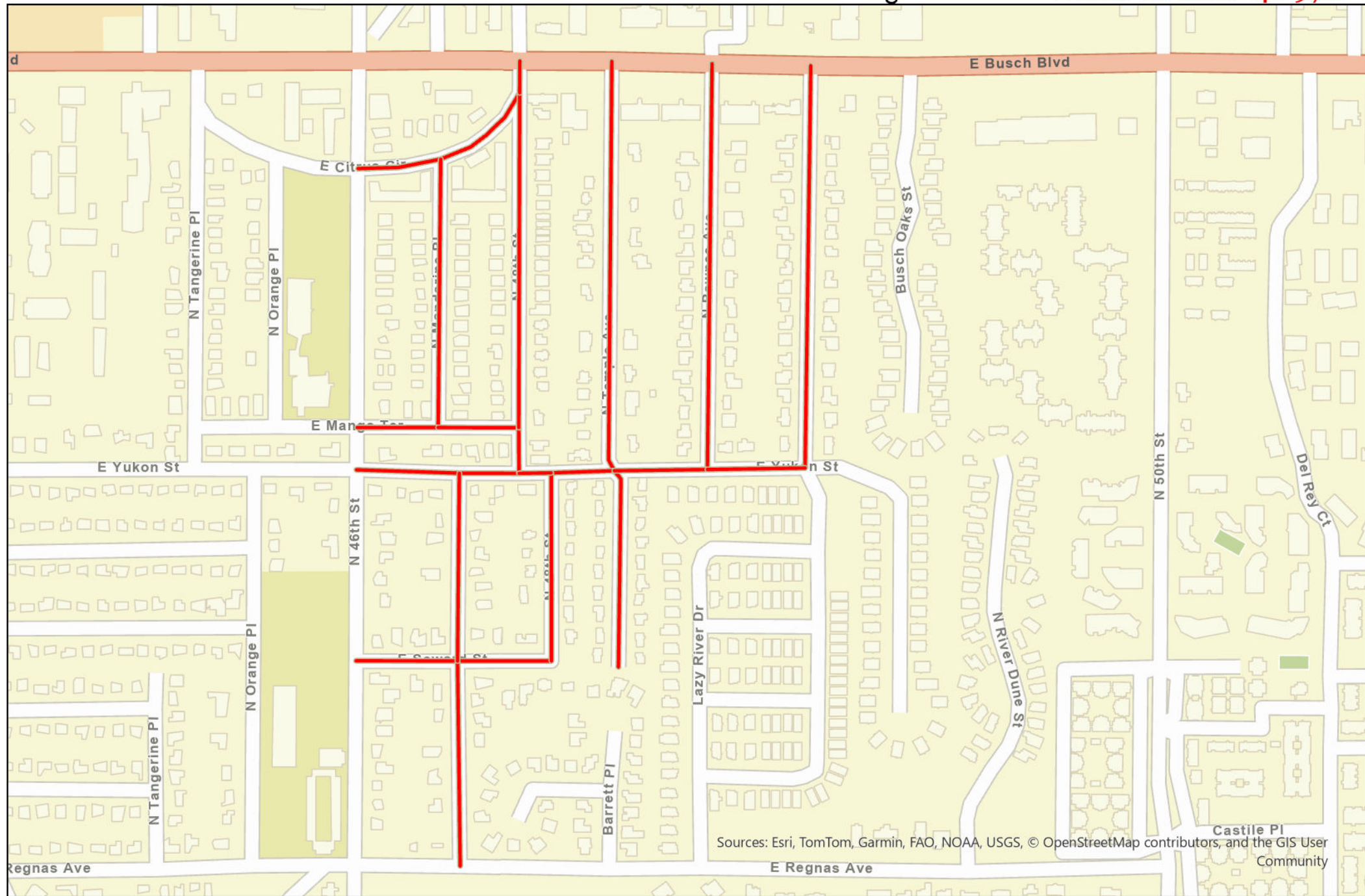
**After**

# N. 46th St. @ E. Yukon St Resurfacing Project



COMPLETE

Work Order# 40978

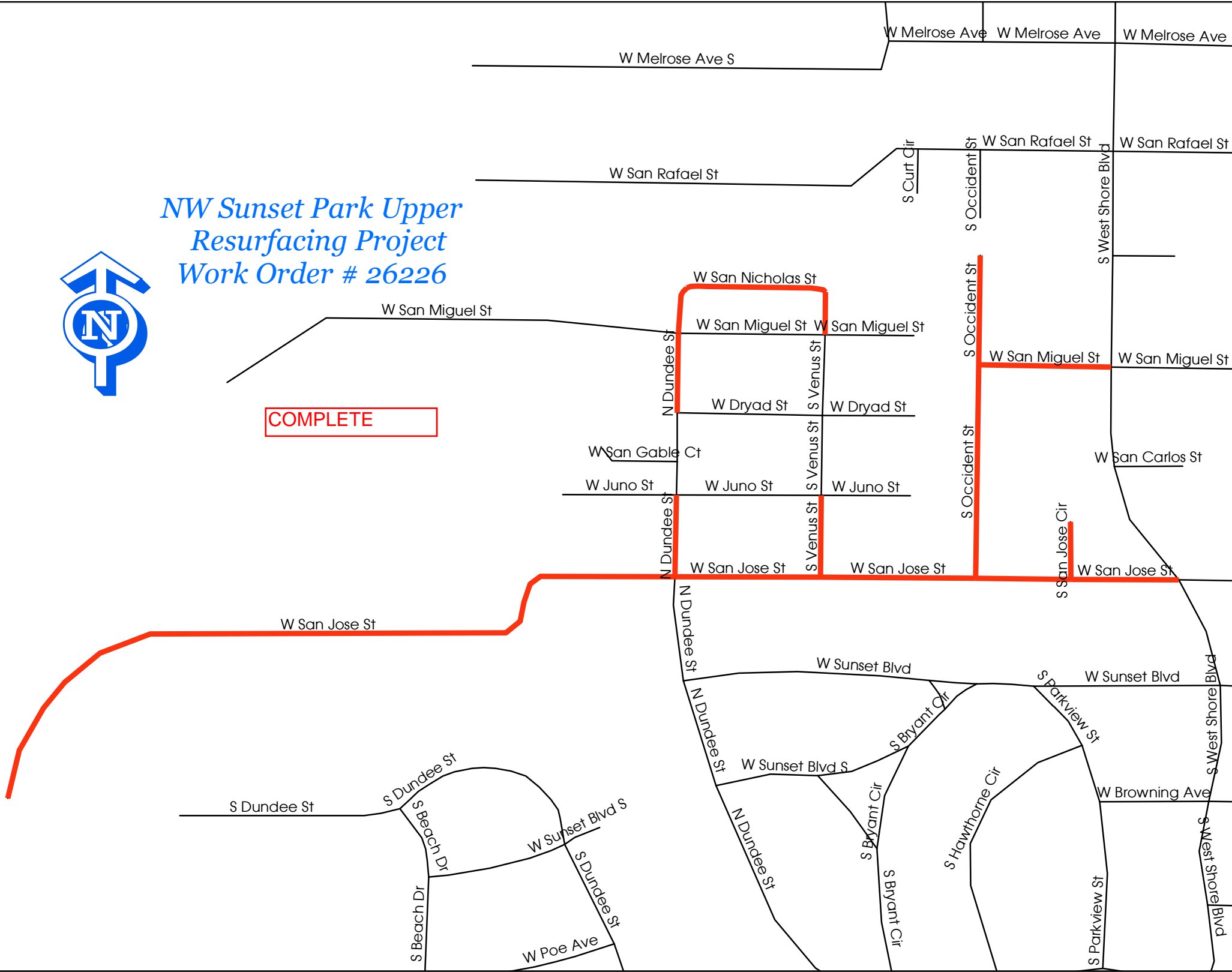


Sources: Esri, TomTom, Garmin, FAO, NOAA, USGS, © OpenStreetMap contributors, and the GIS User Community



*NW Sunset Park Upper  
Resurfacing Project  
Work Order # 26226*

COMPLETE

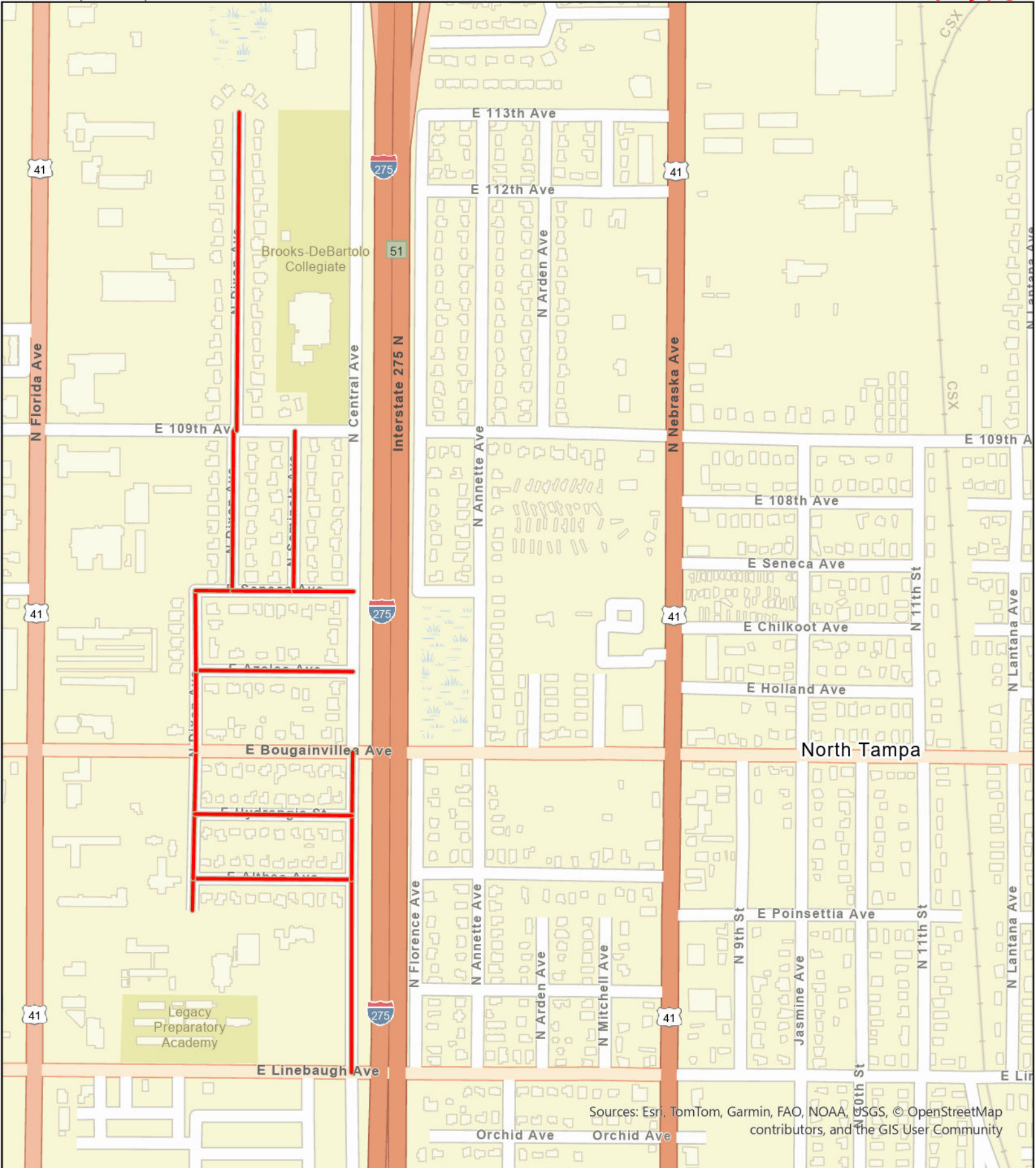




# E. Bougainvillea Ave @ N. Central Ave Resurfacing Project

PLANNED

Work Order# 40975

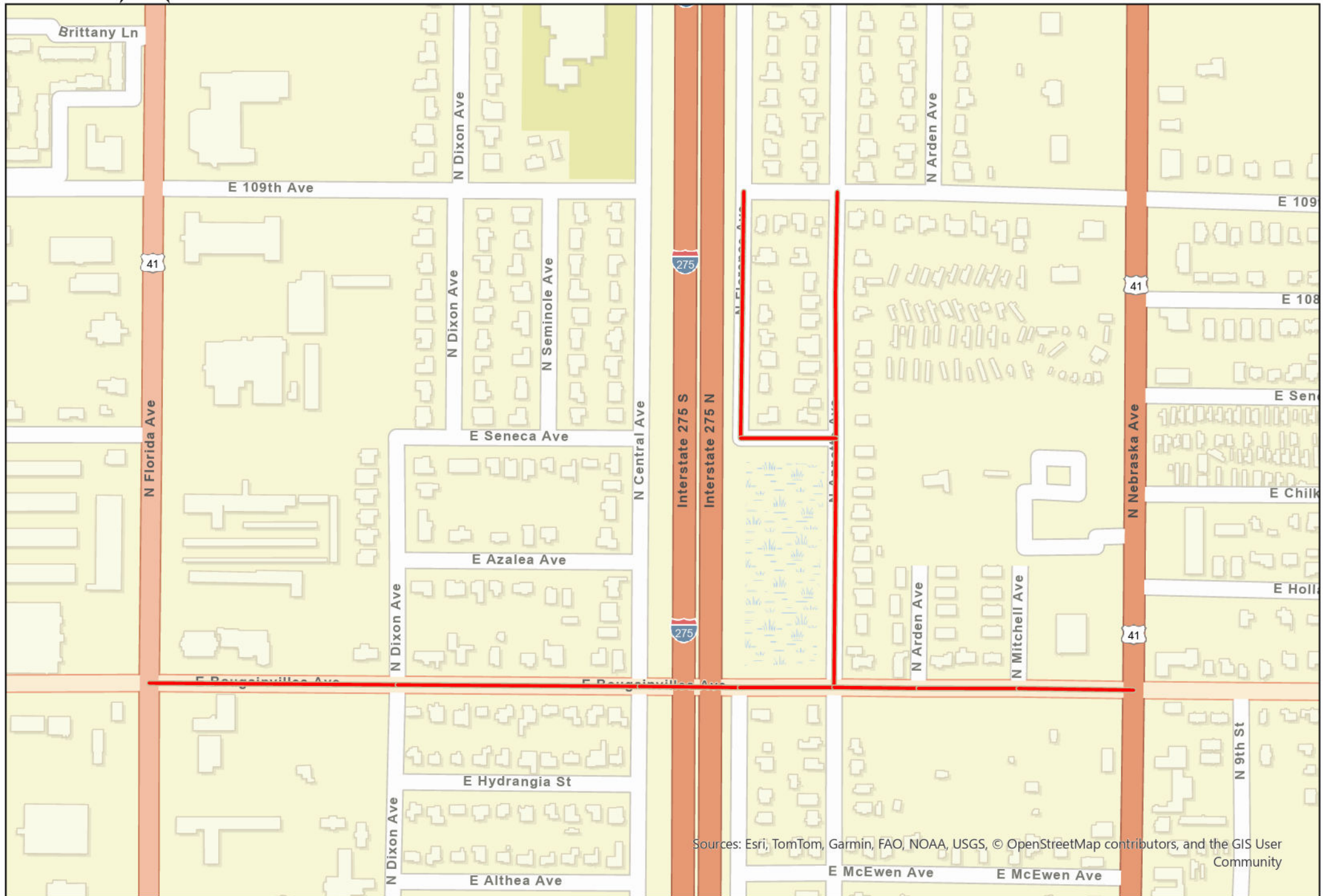




# E. Bougainvillea Ave @ N. Nebraska Ave Resurfacing Project

PLANNED

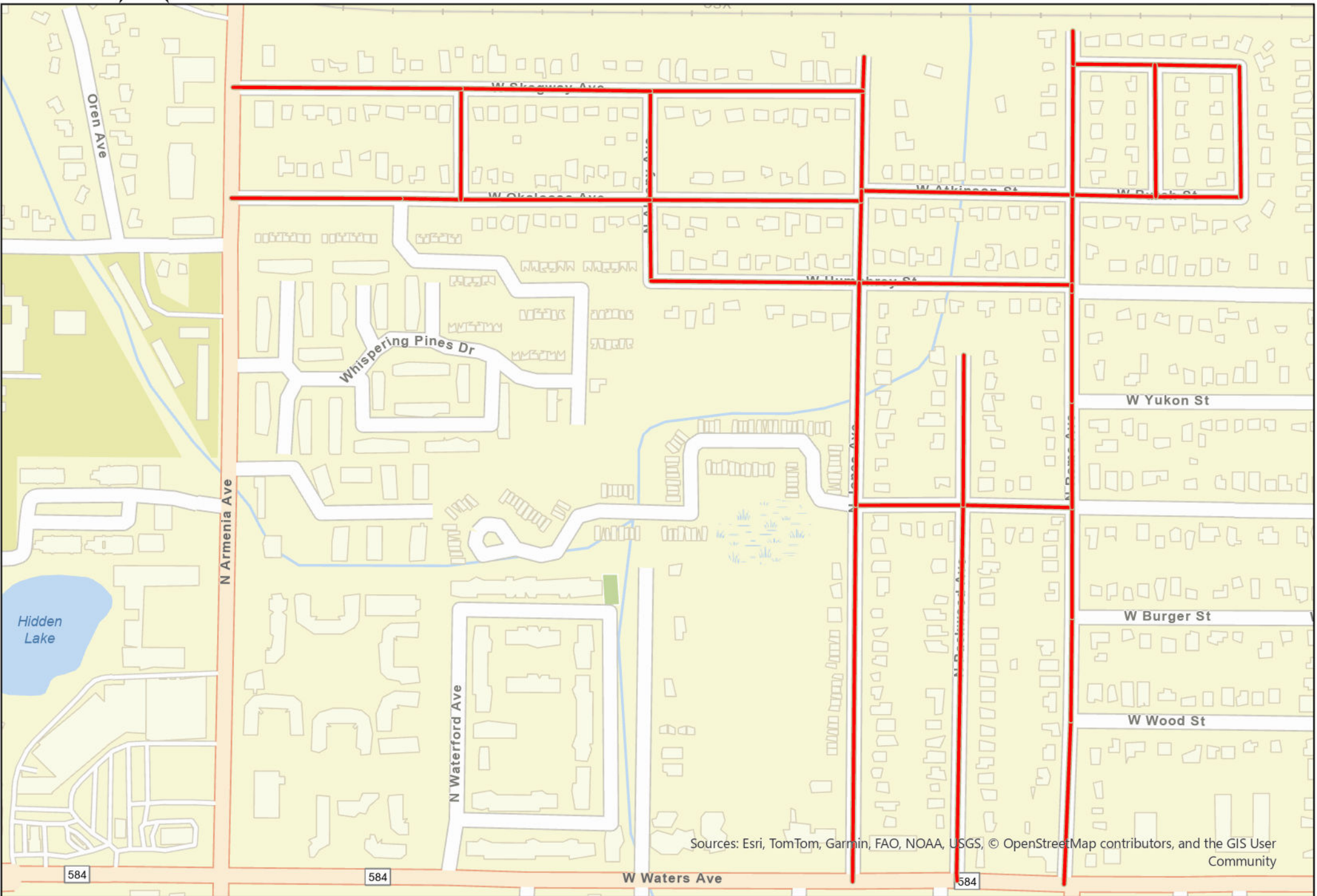
Work Order# 40977



# N. Rome Ave @ W. Waters Ave Resurfacing Project

PLANNED

Work Order# 40973





# N. Willow Ave @ W. Waters Ave Resurfacing Project

PLANNED

Work Order# 47521

