



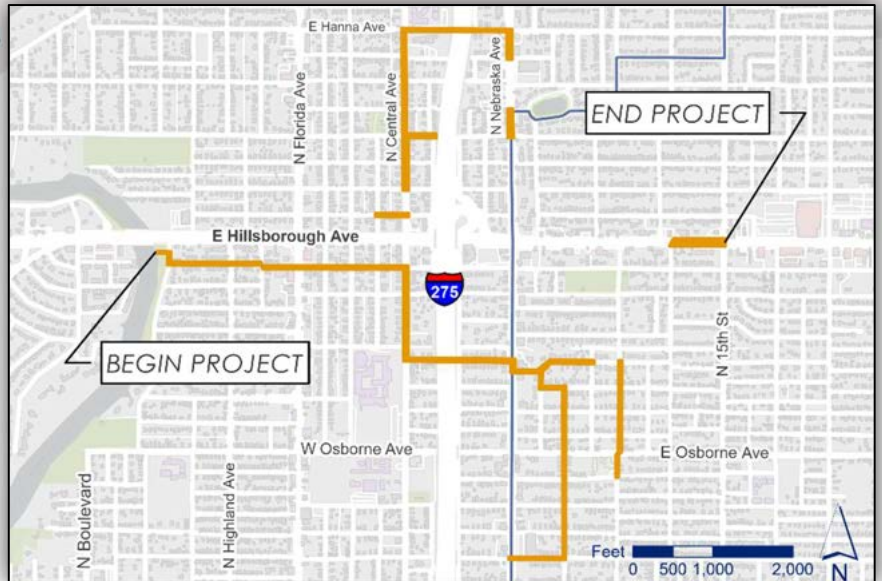
# **Stormwater Projects / Program Report Tampa City Council Update No. 33 - March 27, 2025**

## **A. Major Capital Improvements**

Projects 1 through 5 are regional multi-year flooding relief projects in the City of Tampa. Each project fact sheet includes a description, location map, and timeline status. These projects are in various stages of development and each will take multiple years due to complexity and comprehensive nature of the project. Project 6 consists of miscellaneous neighborhood projects that typically have one year or less construction timeline and each has its own fact sheet.

1. S.E. Seminole Heights Flooding Relief
2. Lower Peninsula Flooding Relief
3. Golf View Estates Flooding Relief
4. South Howard Flood Relief
5. Citywide Watershed Master Plan
6. Miscellaneous Capital Improvements

# 1. S.E. Seminole Heights Flooding Relief



## PROJECT DETAILS

Neighborhood: Old Seminole Heights  
Council District: 6  
Community Redevelopment Area: N/A  
Project ID: 1001151  
Department ID: SW40003  
Contract ID: 19-C-00012

## Project Phase



## PROJECT COST

Planning Study: \$90K  
Feasibility Study: \$45K  
Design & Construction: \$32M  
Funding Source:  

- Stormwater Improvement Fee
- SWFWMD

## ESTIMATED SCHEDULE

Construction Fiscal Year: 2022  
Start Date: November 2021  
Projected End Date: May 2025

## TIMELINE

Design/Permitting started in fall 2019 and was completed in mid 2021.  
The GMP was approved in July 2021.  
Construction started in November 2021 and is expected to be completed in spring 2025.

## CONTACT

Saad ElBakkouri  
813-440-9771  
[Saad.ElBakkouri@tampagov.net](mailto:Saad.ElBakkouri@tampagov.net)

Note: The cost and schedule data shown here are the City's current best estimates and are subject to frequent change

## PROJECT DESCRIPTION

The Southeast Seminole Heights Drainage Basin encompasses 779 acres of urban area that discharges into the Hillsborough River south of the dam. The Basin is part of a historic Tampa neighborhood that had its beginnings in the early 1900's. Southeast Seminole Heights Basin has numerous flooding locations, failing and undersized conveyance systems throughout. A recent drainage study identified several potential stormwater improvement projects to alleviate flooding. A feasibility study was performed to assess the potential drainage improvement projects as recommended in the previous drainage study. Individual improvement projects were subsequently designed and are being constructed throughout the basin areas.

Project consists of design and construction of approximately 16,300 LF of stormwater culverts with associated laterals, inlets, interconnections to existing stormwater system, associated utility conflict resolution relocations, transportation elements, water main replacement upgrades and sustainability treatment elements. The project will also include certain transportation elements as well as the replacement of approximately 11,700 LF of water mains not in the same corridors as the proposed stormwater infrastructure. The City successfully secured cooperative funding from the Southwest Florida Water Management District (SWFWMD).

## BENEFITS TO THE COMMUNITY

- Relieve flooding in residential and commercial areas.
- Reduce pollution in the Hillsborough River and Tampa Bay
- Infrastructure upgrades.
- Enhance vehicle, pedestrian and bicycle safety along Central Avenue.

## 2. Lower Peninsula Flooding Relief

### PROJECT DETAILS

Neighborhood: Interbay – South of Gandy  
Council District: 4  
Community Redevelopment Area: N/A  
Project ID: 1000750  
Department ID: SW40004  
Contract ID:19-C-00059

### Project Phase



### PROJECT COST

Planning Study: \$650K  
Design: \$4M  
Construction: \$51M  
Funding Source:  

- Stormwater Improvement Fee
- SWFWMD
- FDEP

### ESTIMATED SCHEDULE

Construction Fiscal Year: 2023  
Start Date: November 2022  
Projected End Date: June 2025

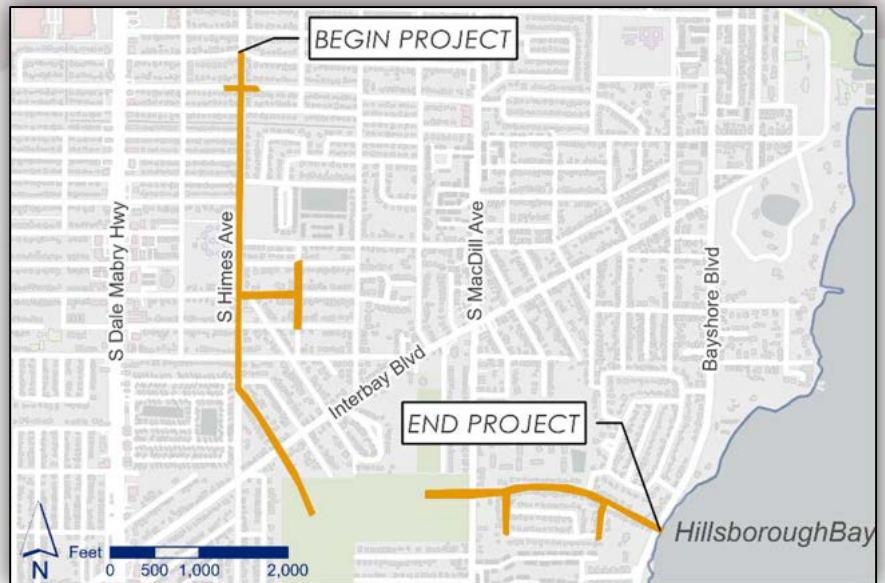
### TIMELINE

Design/Permitting started in July 2020 and was completed in December 2021.  
The GMP was approved in July 2022.  
Construction started in November 2022 and is expected to be completed in spring 2025.

### CONTACT

Yvette Pullara  
813-274-8092  
[Yvette.Pullara@tampagov.net](mailto:Yvette.Pullara@tampagov.net)

Note: The cost and schedule data shown here are the City's current best estimates and are subject to frequent change



### PROJECT DESCRIPTION

The Lower Peninsula Watershed encompasses an area of approximately 8.6 square-miles (5,508 acres) in the City of Tampa. There are numerous flooding locations, failing and undersized conveyance systems throughout the watershed. A watershed management plan was developed in 2019 to provide a baseline for capital improvement planning that provides conceptual solutions to frequent flooding in the region. The plan identified several capital improvement projects.

The project consists of design and construction of more than 8,000 linear feet of box culvert and pipes as well as new drainage inlets and a new stormwater outfall to Hillsborough Bay. The City successfully secured cooperative funding from the Southwest Florida Water Management District (SWFWMD) and the Florida Department of Environmental Protection (FDEP) for these improvements.

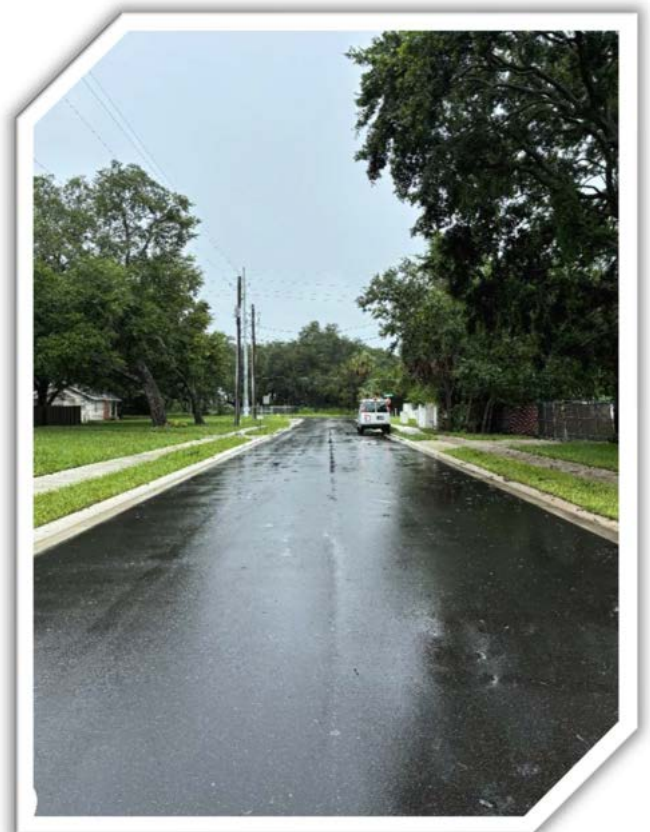
### BENEFITS TO THE COMMUNITY

- Reduce flooding in the mostly residential areas.
- Reduce pollutant loading into Hillsborough Bay through water quality enhancements and green infrastructure.
- Restore, enhance, and preserve the natural environment of MacDill 48 Park to improve habitat for wildlife and reduce the hazard of brush fires.
- Provide passive park amenities within the MacDill 48 Park, including nature/bike trails and other passive park improvements such as benches, etc.

### Project Photos



**MacDill 48 Pond**



**Averill Road Completed**



**Himes Ave – Box and  
Culvert Installation**

### 3. Golf View Estates Flooding Relief

#### PROJECT DETAILS

Neighborhood: Golfview  
Council District: 4  
Community Redevelopment Area: N/A  
Project ID: 1002178  
Department ID: SW40006

#### Project Phase



#### PROJECT COST

Design: \$1.1M  
Construction: \$8M (Est.)  
Funding Source: Stormwater Improvement Fee

#### ESTIMATED SCHEDULE

Construction Fiscal Year: 2026  
Projected Start Date: December 2025  
Projected End Date: May 2027

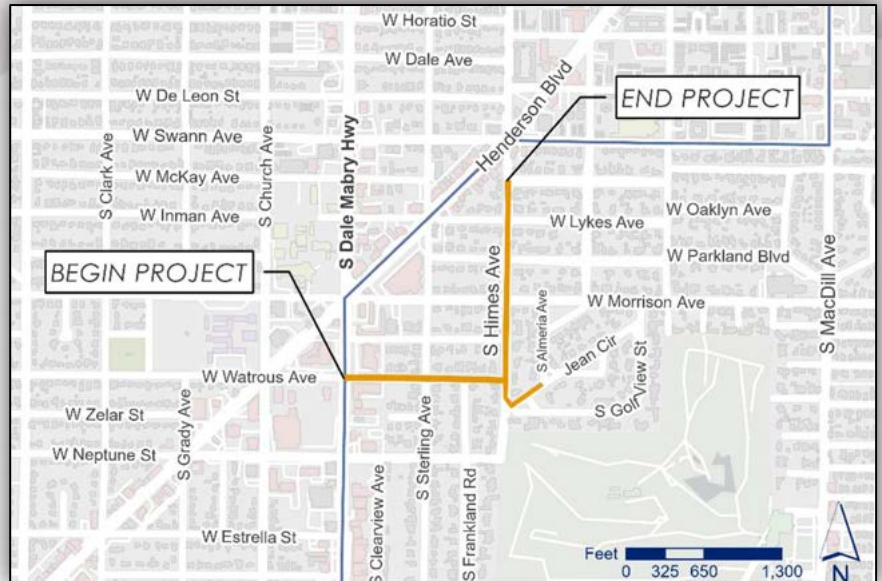
#### TIMELINE

The project is currently under design (60%)

#### CONTACT

Saad ElBakkouri  
813-440-9771  
[Saad.ElBakkouri@tampagov.net](mailto:Saad.ElBakkouri@tampagov.net)

Note: The cost and schedule data shown here are the City's current best estimates and are subject to frequent change



#### PROJECT DESCRIPTION

During high intensity and short duration rain events, low-lying areas in Golfview Neighborhood experience frequent and dangerous flooding due to an old and undersized drainage system. It often takes days to drain some of the flooded streets and vehicles are stranded in these flooded streets.

This project consists of design and construction of a new drainage conveyance system as well as the replacement and upsizing of the existing drainage conveyance system in a highly urbanized residential neighborhood. The upsized drainage system will connect to the City's recently completed Dale Mabry-Henderson Trunkline project at West Watrous Avenue and South Dale Mabry Highway. There will be opportunities to implement Green Infrastructure technologies and improve water quality with this project.

#### BENEFITS TO THE COMMUNITY

- Relieve flooding and improve traffic flow and safety.
- Protect water quality and restore natural habitats.
- Supports system and community resiliency to impacts of climate change.
- Reduce pollutant loading into the Bay through water quality enhancements and green infrastructure.

**Project Photo**





## 4. South Howard Flood Relief

### PROJECT DETAILS

Neighborhood: Parkland Estates  
Council District: 4  
Community Redevelopment Area: N/A  
Project ID: 1002179  
Department ID: SW40007  
Contract ID: 23-C-00021

### Project Phase

PLANNING

DESIGN

PROCUREMENT

CONSTRUCTION

### PROJECT COST

Design: \$7.7M  
Construction: \$65M (Est.)  
Funding Source:  
o Stormwater Improvement Fee  
o Tampa Hillsborough Expressway Authority  
o City of Tampa Water Department  
o FDEP Resilient Florida Grant

### ESTIMATED SCHEDULE

Construction Fiscal Year: 2026  
Projected Start Date: May 2026  
Projected End Date: October 2029

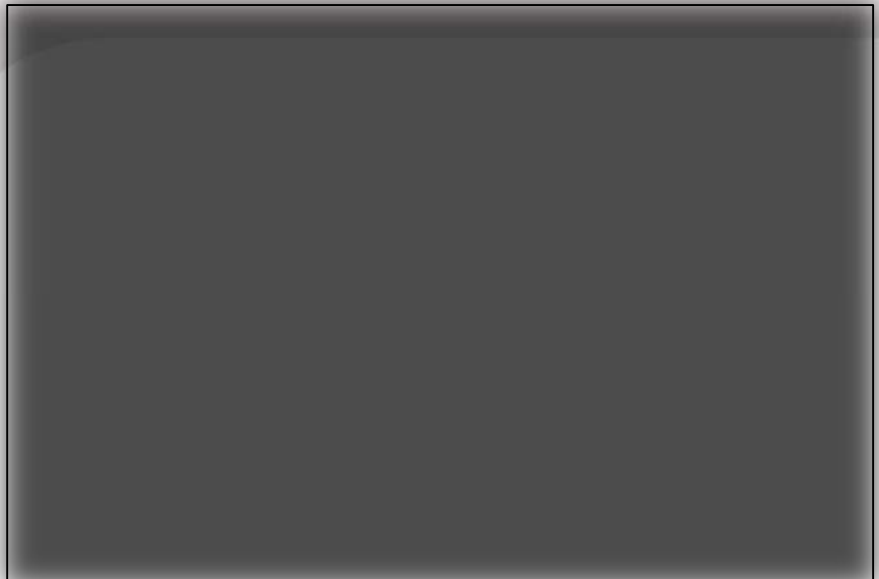
### TIMELINE

Design-Build team selected in December 2023.  
Initial public meeting held in November 2024.  
The scope & fee of design phase was approved by the City Council on November 21, 2024.

### CONTACT

Brett Sillman  
813-274-1856  
[Brett.Sillman@tampagov.net](mailto:Brett.Sillman@tampagov.net)

Note: The cost and schedule data shown here are the City's current best estimates and are subject to frequent change



### PROJECT DESCRIPTION

The South Howard Flood Relief Project involves designing and building a major stormwater conveyance system to improve drainage and reduce flooding along South Howard Avenue and adjacent neighborhoods, including Parkland Estates and Palma Ceia Pines.

### BENEFITS TO THE COMMUNITY

- Upgraded water, wastewater, and stormwater infrastructure.
- Coordination with Tampa Electric (TECO) to move South Howard Avenue power lines underground.
- Reimagined South Howard Avenue streetscape with wider sidewalks, on-street parking, enhanced landscaping, and expanded tree canopy for safer and more enjoyable walking, shopping, and dining.
- Improved water quality discharges to the Hillsborough Bay through innovative green infrastructure technologies, contributing to a healthier bay and more resilient community.
- Partnering with the Tampa Hillsborough Expressway Authority for drainage of the expanded South Selmon Expressway.
- Repaved roadways near project area before construction phase.

## 5. Citywide Watershed Master Plan

### PROJECT DESCRIPTION

The Citywide Watershed Master Plan (WMP) is a comprehensive, data-driven framework for managing Tampa's stormwater across all drainage basins. By integrating up-to-date predictive models and the best available data, the WMP provides a unified approach to identify existing and potential flooding issues, fill information gaps in unstudied basins, and guide the prioritization of future stormwater capital improvements. It also establishes basin-specific criteria to ensure that new development and redevelopment projects meet stormwater requirements based on existing system capacity, preventing adverse impacts to surrounding properties. This citywide effort enhances coordination among municipal departments and agencies, supports efficient project implementation, and positions Tampa to adapt to more frequent and intense storm events—ultimately laying a resilient foundation for future generations.

### BENEFITS TO THE COMMUNITY

- **Reduced Flood Risks:** Targeted improvements informed by comprehensive modeling help safeguard residents and property.
- **Lower Insurance Premiums:** An improved Community Rating System (CRS) class can deliver direct cost savings to homeowners.
- **Enhanced Resilience & Sustainability:** A proactive, citywide perspective better equips Tampa for evolving climate challenges.
- **Equitable Development & Redevelopment Standards:** Basin-specific criteria protect property owners from detrimental drainage changes in new developments.
- **Strategic Funding Opportunities:** Thorough, up-to-date modeling strengthens the City's ability to secure state and federal grants.

### Project Phase



### PROJECT COST

Planning (Gap Analysis): \$192k  
Watershed Master Plan: \$5M  
Funding Source: Stormwater Improvement Fee

### ESTIMATED SCHEDULE

Planning: 2023  
Procurement: 2024  
Study: 2024 – 2026

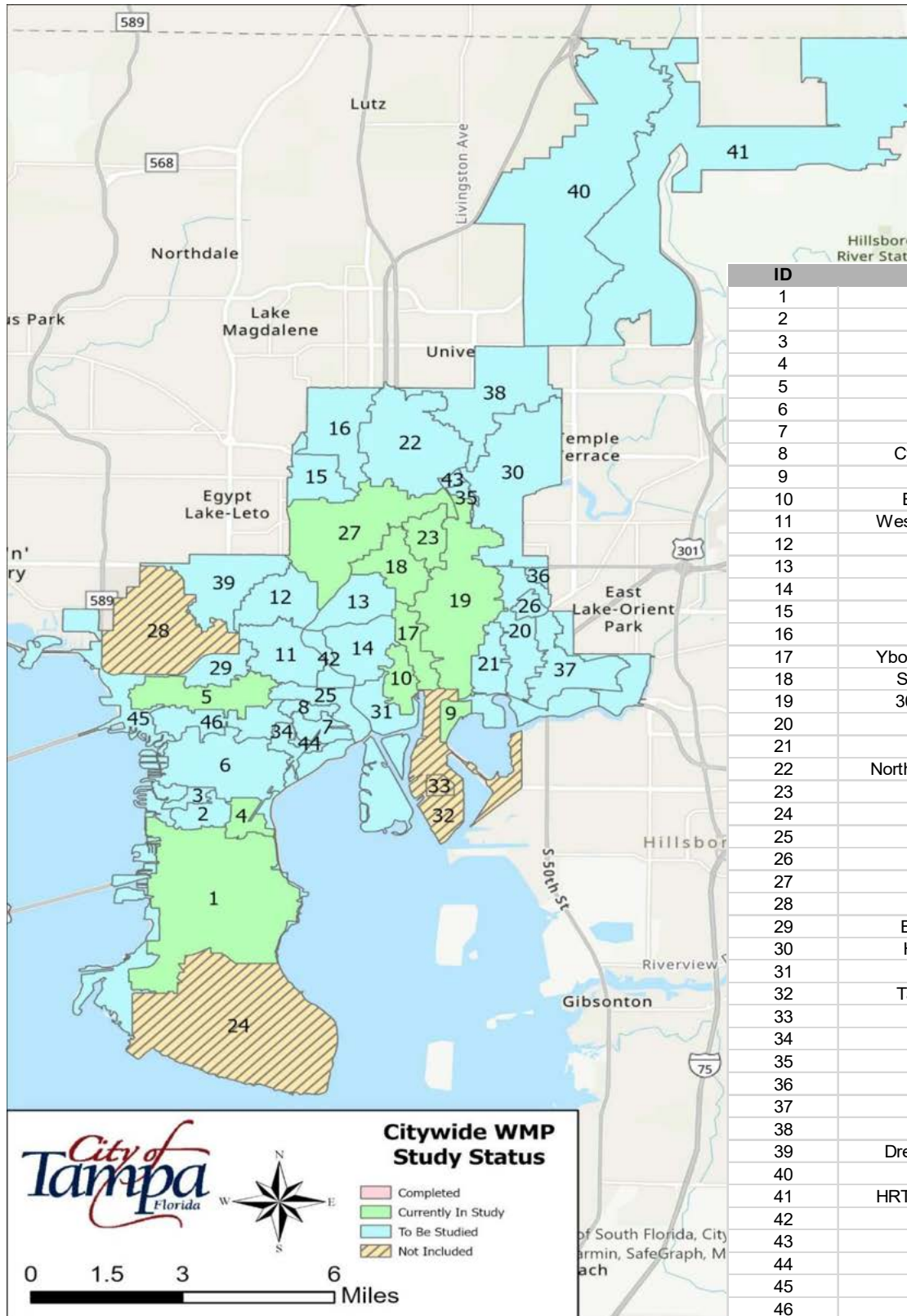
### CONTACT

Ben Allushuski  
813-274-3257  
[Ben.Allushuski@tampagov.net](mailto:Ben.Allushuski@tampagov.net)

Note: The cost and schedule data shown here are the City's current best estimates and are subject to frequent change

### INITIAL BASINS TO BE STUDIED:

Basin	Firm
Lemon Street Canal	Geosyntec
North River West	Geosyntec
North River East	Jacobs
18th Street	JMT
30th & Hillsborough	JMT
SE Seminole Heights	Land and Water Engineering Services
El Prado Outfall	Land and Water Engineering Services
Ybor City (29th St Outfall)	Stantec
Encore Channelside	Stantec
Lower Peninsula	Applied Sciences
Palmetto Beach	Applied Sciences



ID	Basin Name
1	Lower Peninsula
2	Spring Lake Basin
3	Lamb Ave
4	El Prado Outfall
5	Lemon Street
6	Upper Peninsula
7	Spanish Town
8	Cypress Street Outfall
9	Palmetto Beach
10	Encore Channelside
11	West Tampa - MacFarlane
12	Buffalo Avenue
13	Sunshine Park
14	Glenwood
15	Waters and Rome
16	Curiosity Creek
17	Ybor City (29TH St Outfall)
18	SE Seminole Heights
19	30th and Hillsborough
20	43rd Outfall
21	McKay Bay
22	North Tampa Closed Basins
23	18th Street
24	MacDill AFB
25	West River
26	Myrtle Hill
27	North River
28	Tampa Airport
29	Bruce and Boyscout
30	HRTBC - East Lake
31	Downtown
32	Tampa Port Authority
33	HFC
34	Resilient SoHo
35	Rogers
36	47th and Frierson
37	50th & Acline
38	Duck Pond
39	Drew Park - Northwest 5
40	Cypress Creek
41	HRTBC - East Lake, North
42	Green Street
43	Rowlett
44	Swann Pond
45	Coastal
46	Cleveland Street

## 6. Miscellaneous Capital Improvements Index

Construction timelines are typically one year or less for neighborhood projects. For additional project descriptions, please see the project fact sheets following this project index.

### Projects Bid through CAD

- 6.1.1 Annual Cured-in-Place Pipe (CIPP) Rehabilitation
- 6.1.2 Lamb Canal Rehabilitation & Flood Relief
- 6.1.3 Ditch Rehabilitation Program
  - 6.1.3.1 43rd St Ditch Rehabilitation
  - 6.1.3.2 N. Grady Ave Ditch Rehabilitation
- 6.1.4 Hyde Park Groundwater Diversion Phase 2
- 6.1.5 Beach Park Drainage Improvements
- 6.1.6 Manhattan Phase 1: Vasconia to Obispo Flooding Relief
- 6.1.7 Manhattan Phase 2: San Pedro to Bay-to-Bay Flooding Relief
- 6.1.8 Clark & Fair Oaks
- 6.1.9 Woodmere & Lois
- 6.1.10 North Tampa Closed Basin (NTCB) – 17<sup>th</sup> & Annona
- 6.1.11 NTCB – Elmer Pond Expansion
- 6.1.12 NTCB – 99<sup>th</sup> Ave West Pond Expansion

### Projects Through Job Order Contracting

- 6.2.1 Copeland Park Pumping Station
- 6.2.2 Lantana-Poinsettia Pumping Station

### Projects Assigned to Mobility Department In-House Crews

- 6.3.1 Clark St & 30th St Pipe Relocation
- 6.3.2 N. Ashley Pond Expansion
- 6.3.3 Mabel North of Henry
- 6.3.4 Conover & 13th
- 6.3.5 NTCB – 99th Ave East Pond Expansion

## 6.1.1 Annual CIPP Rehabilitation

### PROJECT DETAILS

Neighborhoods: Citywide  
Council District: Citywide  
Project ID: 1001151  
Department ID:  
Contract ID: 23-C-00009

### Project Phase



### PROJECT COST ESTIMATE: \$800K/YR

Funding Source: Stormwater Improvement Fee

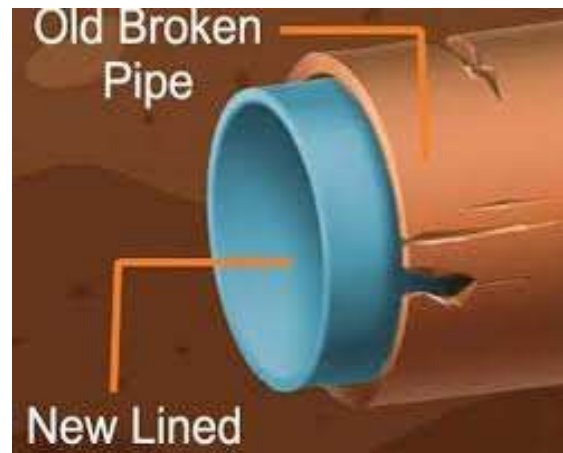
### ESTIMATED SCHEDULE

Construction Fiscal Year: Continuous  
Projected Start Date: Continuous  
Projected End Date: Continuous

### CONTACT

Yvette Pullara  
813-274-8092  
[Yvette.Pullara@tampagov.net](mailto:Yvette.Pullara@tampagov.net)

Note: The cost and schedule data shown here are the City's current best estimates and are subject to frequent change



### PROJECT DESCRIPTION

The scope of work includes labor, materials, and equipment to rehabilitate gravity stormwater pipes from 12-inch to 48-inch diameter by installation of cured-in-place pipe liner.

### BENEFITS TO THE COMMUNITY

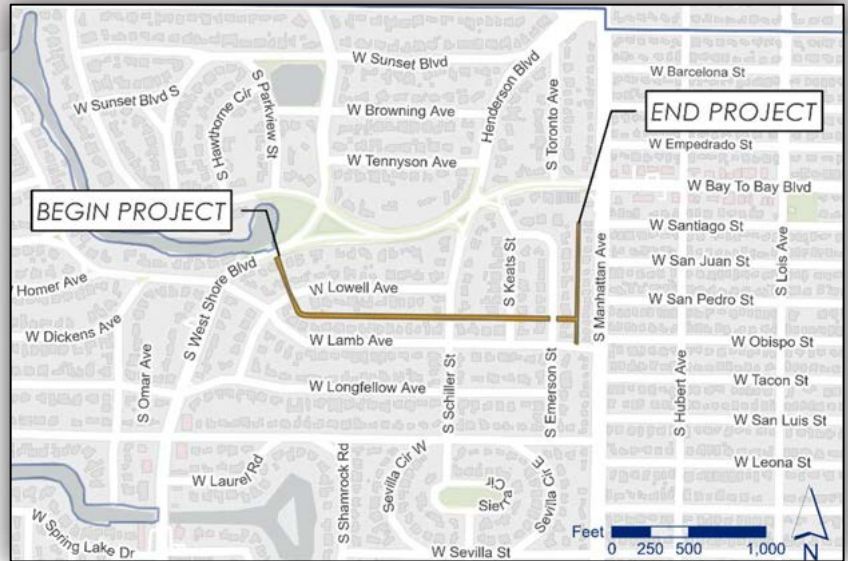
- Provides rehabilitation of deteriorated stormwater pipe systems.



## 6.1.2 Lamb Canal Rehabilitation & Flood Relief

### PROJECT DETAILS

Neighborhoods: Sunset Park  
Council District: 4  
Community Redevelopment Area: N/A  
Project ID: 1001171  
Department ID: SW5006



### Project Phase



### PROJECT COST ESTIMATE: \$11M

Funding Source: Stormwater Improvement Fee

### ESTIMATED SCHEDULE

Construction Fiscal Year: On Hold  
Projected Start Date: On Hold  
Projected End Date: On Hold

### CONTACT

Yvette Pullara  
813-274-8092  
[Yvette.Pullara@tampagov.net](mailto:Yvette.Pullara@tampagov.net)

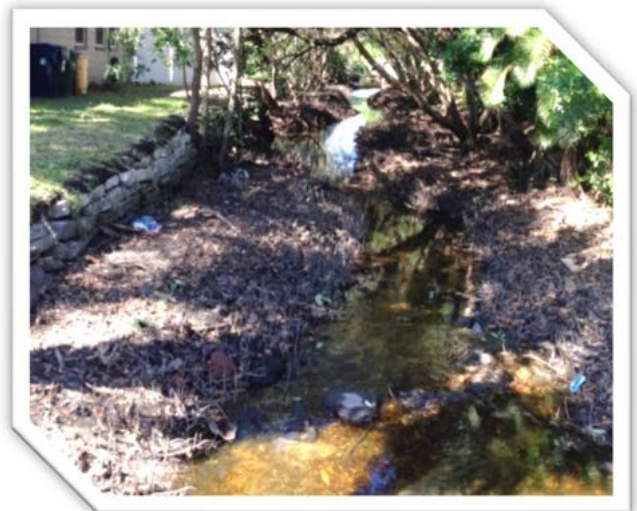
Note: The cost and schedule data shown here are the City's current best estimates and are subject to frequent change

### PROJECT DESCRIPTION

This project provides relief for frequent and extreme flooding and to address bank erosion of the canal and ditches draining the watershed. Project scope includes piping in the Emerson ditch and construction of box culverts in the Lamb canal to increase capacity and to protect abutting properties from future erosion. Grassed swales will be constructed on top of the new pipes and box culverts to provide water quality treatment.

### BENEFITS TO THE COMMUNITY

- Relieve flooding and improve traffic flow and safety.
- Protect water quality and restore natural habitats.
- Supports system and community resiliency to impacts of climate change.



## 6.1.3 Ditch Rehabilitation Program

### PROJECT DETAILS

Neighborhoods: Citywide  
Council District: Citywide  
Project ID: 1000751  
Department ID:  
Contract ID: 24-C0041



### Project Phase

PLANNING

DESIGN

PROCUREMENT

CONSTRUCTION

CLOSEOUT

### PROJECT COST ESTIMATE: \$1M/YR

Funding Source: Stormwater Improvement Fee

### ESTIMATED SCHEDULE

Construction Fiscal Year: Continuous  
Projected Start Date: Continuous  
Projected End Date: Continuous

### CONTACT

Yvette Pullara  
813-274-8092  
[Yvette.Pullara@tampagov.net](mailto:Yvette.Pullara@tampagov.net)

Note: The cost and schedule data shown here are the City's current best estimates and are subject to frequent change

### PROJECT DESCRIPTION

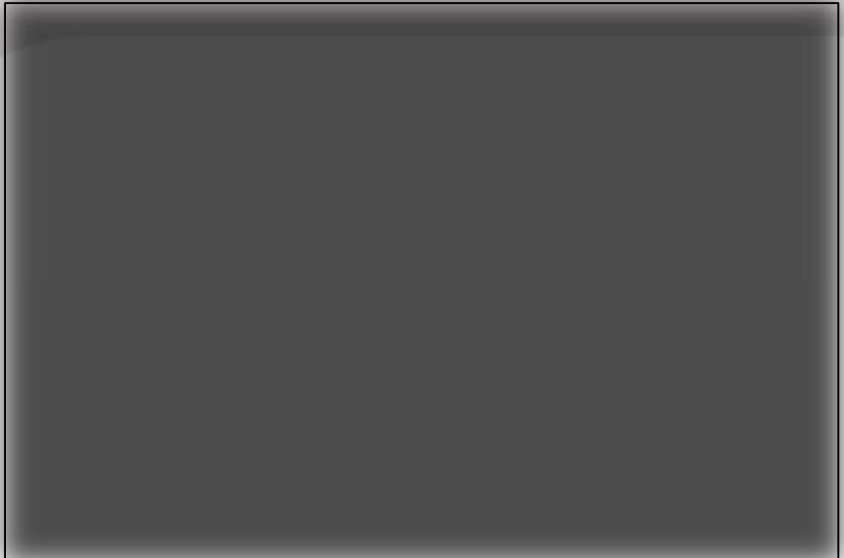
This project creates an annual contract to address ditch improvements and associated upgrades to improve conveyance capacity and embankment stabilization.

### BENEFITS TO THE COMMUNITY

- Rehabilitation is needed for ditches that have diminished capacity due to embankment erosion that cannot be corrected by maintenance.



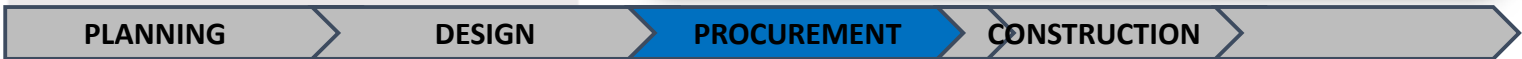
## 6.1.3.1 43<sup>rd</sup> St Ditch Rehabilitation



### PROJECT DETAILS

Neighborhood: East Side Commercial  
Council District: 5  
Community Redevelopment Area: N/A  
Project ID: 1000751  
Department ID:  
Contract ID: 24-C0041

### Project Phase



### PROJECT COST ESTIMATE: \$2.28M

Funding Source: Stormwater Improvement Fee

### ESTIMATED SCHEDULE

Construction Fiscal Year: 2025  
Projected Start Date: May 2025  
Projected End Date: May 2026

### CONTACT

Yvette Pullara  
813-274-8092  
[Yvette.Pullara@tampagov.net](mailto:Yvette.Pullara@tampagov.net)

Note: The cost and schedule data shown here are the City's current best estimates and are subject to frequent change

### PROJECT DESCRIPTION

Project area is located just west of the Tampa Distribution Center at 1212 N. 50th Street. Work involves approximately 700 feet of concrete slope stabilization of an existing ditch and all miscellaneous and appurtenant work.

### BENEFITS TO THE COMMUNITY

The ditch alignment and sandy soils have caused heavy erosion in some embankment areas, causing continuous maintenance issues and the ditch to widen beyond its existing drainage easement limits. The rehabilitation involves embankment reconstruction and hardening to ensure long-term future stability, reducing maintenance activities and reducing potential damage to adjacent parcels. The ditch bottom will remain open to allow for natural infiltration.



## 6.1.3.2 N. Grady Ave Ditch Rehabilitation

### PROJECT DETAILS

Neighborhood: Carver City Lincoln Gardens  
 Council District: 6  
 Community Redevelopment Area: N/A  
 Project ID: 1000751  
 Department ID:  
 Contract ID: 24-C0041

### Project Phase



### PROJECT COST ESTIMATE: \$1.27M

Funding Source: Stormwater Improvement Fee

### ESTIMATED SCHEDULE

Construction Fiscal Year: 2025  
 Projected Start Date: May 2025  
 Projected End Date: May 2026

### CONTACT

Yvette Pullara  
 813-274-8092  
[Yvette.Pullara@tampagov.net](mailto:Yvette.Pullara@tampagov.net)

Note: The cost and schedule data shown here are the City's current best estimates and are subject to frequent change



### PROJECT DESCRIPTION

Project area is located on the east side of N Grady Avenue south of W Spruce Street. Work involves demolition of trees and guardrail, installation of ten (10) storm sewer structures and large diameter piping to enclose an existing 800-ft ditch corridor. Work includes approximately 200 feet of 36" RCP pipe and approximately 490 feet of 60"x38" ERCP pipe and all miscellaneous and appurtenant work.

### BENEFITS TO THE COMMUNITY

The existing ditch is located directly adjacent to the existing City roadway with guardrail separating traffic from the steep embankment. Steep embankment slopes and sandy soils have caused heavy erosion, causing continuous maintenance issues for City staff. Improvements will enclose the open ditch with installation of a storm sewer conveyance system. The rehabilitation work will maintain stormwater flow needs while improving public safety and reducing future maintenance.



## 6.1.4 Hyde Park GW Diversion Phase 2

### PROJECT DETAILS

Neighborhood: Hyde Park Preservation  
Council District: 4  
Community Redevelopment Area: N/A  
Project ID: 1001588  
Department ID: SW50003



### Project Phase

PLANNING

DESIGN

PROCUREMENT

CONSTRUCTION

### PROJECT COST ESTIMATE: \$3M

Funding Source: Stormwater Improvement Fee

### ESTIMATED SCHEDULE

Construction Fiscal Year: 2023  
Start Date: October 2023  
End Date: October 2024

### CONTACT

Saad ElBakkouri  
813-440-9771

[Saad.ElBakkouri@tampagov.net](mailto:Saad.ElBakkouri@tampagov.net)

Note: The cost and schedule data shown here are the City's current best estimates and are subject to frequent change

### PROJECT DESCRIPTION

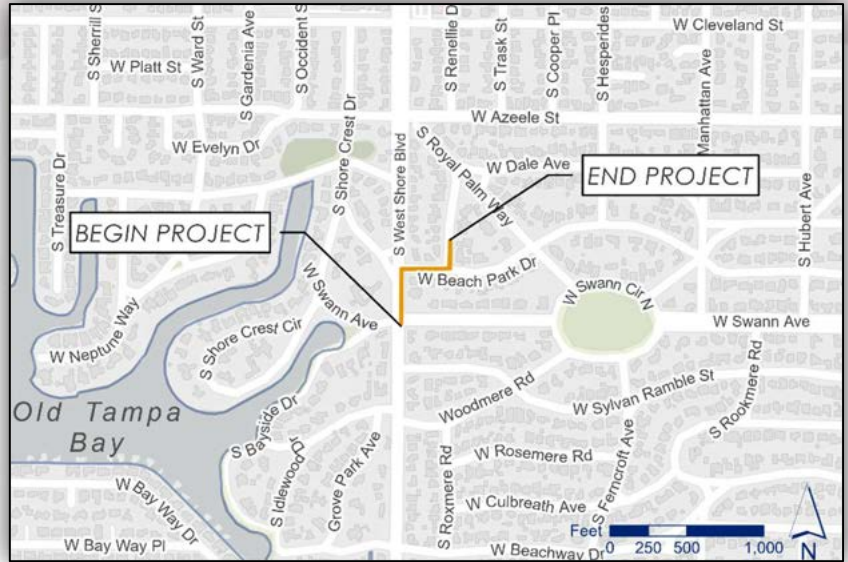
This area of Hyde Park has experienced extremely high groundwater levels causing seepage from the cracks in the sidewalks, driveways, and roadways. This seepage has killed roadway trees and prompted a growth of algae on the streets and sidewalks, posing a hazard to pedestrians and traffic.

The project consists of installation of underdrain systems along each side of the streets. The new systems are connected to the existing inlets along Bayshore Boulevard for discharge to Hillsborough Bay.

### BENEFITS TO THE COMMUNITY

- Relief of chronic nuisance ponding issues on sidewalks and streets associated with groundwater seepage.
- Improved sidewalks and ground infrastructure for safer walking, biking, and driving conditions.
- Improved driving conditions during high-intensity and short-duration rainfall events.
- Reduce maintenance required to improve pavement conditions.

## 6.1.5 Beach Park Drainage Improvements



### PROJECT DETAILS

Neighborhood: Beach Park  
Council District: 6  
Community Redevelopment Area: N/A  
Project ID: 1001587  
Department ID: SW50002  
Contract ID: 21-C-00017

### Project Phase

PLANNING

DESIGN

PROCUREMENT

CONSTRUCTION

CLOSEOUT

### PROJECT COST ESTIMATE: \$1M

Funding Source: Stormwater Improvement Fee

### ESTIMATED SCHEDULE

Construction Fiscal Year: 2022  
Start Date: May 2022  
End Date: October 2023

### CONTACT

Andy Brown  
813-274-8543  
[Andy.Brown@tampagov.net](mailto:Andy.Brown@tampagov.net)

Note: The cost and schedule data shown here are the City's current best estimates and are subject to frequent change

### PROJECT DESCRIPTION

Flooding occurs in the area due to insufficient drainage capacity of the existing system. This project consists of construction of new pipes and inlets connecting to the existing system on Swann Avenue to alleviate flooding in the area.

### BENEFITS TO THE COMMUNITY

- Provides a second outlet for the low-lying area to reduce the localized flooding.

## 6.1.6 Manhattan Phase 1: Vasconia to Obispo Flooding Relief

### PROJECT DETAILS

Neighborhood: Belmar Gardens  
Council District: 4  
Community Redevelopment Area: N/A  
Project ID: 1001585  
Department ID: SW50004  
Contract ID: 24-C00039

### Project Phase



### PROJECT COST ESTIMATE: \$5M

Funding Source: Stormwater Improvement Fee

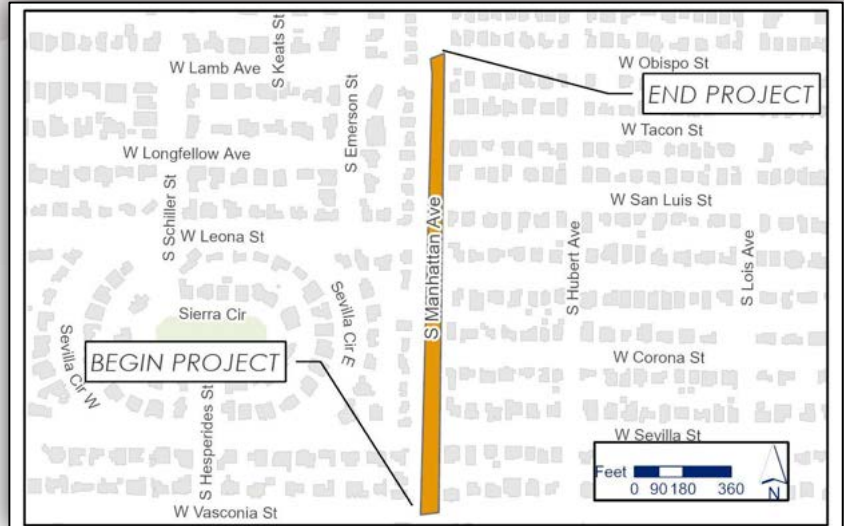
### ESTIMATED SCHEDULE

Construction Fiscal Year: 2025  
Projected Start Date: July 2025  
Projected End Date: December 2025

### CONTACT

Yvette Pullara  
813-274-8092  
[Yvette.Pullara@tampagov.net](mailto:Yvette.Pullara@tampagov.net)

Note: The cost and schedule data shown here are the City's current best estimates and are subject to frequent change



### PROJECT DESCRIPTION

This project consists of design and construction of a new drainage conveyance system as well as the replacement and upsizing of the existing drainage conveyance system in a highly urbanized residential neighborhood in the City of Tampa. During high intensity and short duration rainstorm events, the area experiences frequent and dangerous street flooding due to an old and undersized drainage system. This project is located along Manhattan Avenue at Vasconia Street and runs north to Obispo. This project will also consist of new watermain upgrades along the corridor.

### BENEFITS TO THE COMMUNITY

- Relieve flooding and improve traffic flow and safety.
- Upgraded water infrastructure.

## 6.1.7 Manhattan Phase 2: San Pedro to Bay to Bay Flooding Relief

### PROJECT DETAILS

Neighborhood: Virginia Park  
Council District: 4  
Community Redevelopment Area: N/A  
Project ID:  
Department ID: SW60012  
Contract ID: 24-C00039



### Project Phase



### PROJECT COST ESTIMATE: \$6M

Funding Source: Stormwater Improvement Fee

### ESTIMATED SCHEDULE

Construction Fiscal Year: On Hold  
Projected Start Date: On Hold  
Projected End Date: On Hold

### CONTACT

Yvette Pullara  
813-274-8092  
[Yvette.Pullara@tampagov.net](mailto:Yvette.Pullara@tampagov.net)

Note: The cost and schedule data shown here are the City's current best estimates and are subject to frequent change

### PROJECT DESCRIPTION

This project consists of design and construction of a new drainage conveyance system as well as the replacement and upsizing of the existing drainage conveyance system in a highly urbanized residential neighborhood in the City of Tampa. During high intensity and short duration rainstorm events, the area experiences frequent and dangerous street flooding due to an old and undersized drainage system. This project is located along Manhattan Avenue tying into the Emerson Ditch at 3111 Manhattan and runs north to Bay to Bay. This project will also consist of new watermain upgrades along the corridor.

### BENEFITS TO THE COMMUNITY

- Relieve flooding and improve traffic flow and safety.
- Upgraded water infrastructure.

## 6.1.8 Clark & Fair Oaks

### PROJECT DETAILS

Neighborhood: Fair Oaks Manhattan  
Council District: 4  
Community Redevelopment Area: N/A  
Project ID: 1001176  
Department ID: SW60001



### Project Phase

PLANNING

DESIGN

**PROCUREMENT**

CONSTRUCTION

CLOSEOUT

### PROJECT COST ESTIMATE: \$95K

Funding Source: Stormwater Improvement Fee

### ESTIMATED SCHEDULE

Construction Fiscal Year: 2025  
Projected Start Date: September 2025  
Projected End Date: December 2025

### CONTACT

Yvette Pullara  
813-274-8092  
[Yvette.Pullara@tampagov.net](mailto:Yvette.Pullara@tampagov.net)

Note: The cost and schedule data shown here are the City's current best estimates and are subject to frequent change

### PROJECT DESCRIPTION

Low-lying areas on S Clark Ave. between Fair Oaks Ave. and Lawn Ave. experience frequent flooding due to failed pipes connecting the ditch and inadequate drainage inlets in the area. The proposed project consists of replacing the failed pipes and construction of new pipes and inlets to alleviate the flooding situation.

### BENEFITS TO THE COMMUNITY

- Relieve flooding and improve traffic flow and safety.

## 6.1.9 Woodmere & Lois

### PROJECT DETAILS

Neighborhood: Beach Park  
Council District: 6  
Community Redevelopment Area: N/A  
Project ID: 1001955  
Department ID: SW60007



### Project Phase

PLANNING

**DESIGN**

PROCUREMENT

CONSTRUCTION

CLOSEOUT

### PROJECT COST ESTIMATE: \$150K

Funding Source: Stormwater Improvement Fee

### ESTIMATED SCHEDULE

Construction Fiscal Year: 2025  
Projected Start Date: September 2025  
Projected End Date: June 2026

### CONTACT

Saad ElBakkouri  
813-440-9771  
[Saad.ElBakkouri@tampagov.net](mailto:Saad.ElBakkouri@tampagov.net)

Note: The cost and schedule data shown here are the City's current best estimates and are subject to frequent change

### PROJECT DESCRIPTION

Lois Ave and Dale Ave southeast of Woodmere Rd experience flooding due to insufficient drainage capacity. The proposed project consists of construction of new pipes and inlets connecting on Lois Ave and Dale Ave to alleviate the flooding.

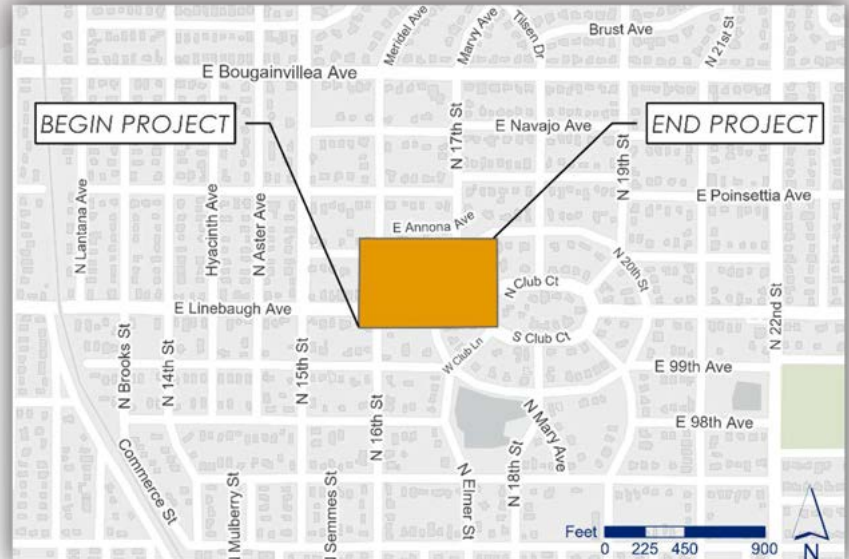
### BENEFITS TO THE COMMUNITY

- Relieve flooding and improve traffic flow and safety.

## 6.1.10 NTCB – 17th & Annona

### PROJECT DETAILS

Neighborhood: Tampa Overlook  
Council District: 7  
Community Redevelopment Area: N/A  
Project ID: 1001176  
Department ID: SW50019



### Project Phase

PLANNING

DESIGN

**PROCUREMENT**

CONSTRUCTION

CLOSEOUT

### PROJECT COST ESTIMATE: \$75K

Funding Source: Stormwater Improvement Fee

### ESTIMATED SCHEDULE

Construction Fiscal Year: 2025  
Projected Start Date: September 2025  
Projected End Date: April 2026

### CONTACT

Jeff DeBosier  
813-274-8428  
[Jeff.Debosier@tampagov.net](mailto:Jeff.Debosier@tampagov.net)

Note: The cost and schedule data shown here are the City's current best estimates and are subject to frequent change

### PROJECT DESCRIPTION

This project consists of construction of new inlets and pipes connecting to the existing system.

### BENEFITS TO THE COMMUNITY

- Relieve flooding and improve traffic flow and safety.

## 6.1.11 NTCB – Elmer Pond Expansion

### PROJECT DETAILS

Neighborhood: Tampa Overlook  
Council District: 7  
Community Redevelopment Area: N/A  
Project ID: 1001176  
Department ID: SW50021

### Project Phase



**PROJECT COST TOTAL ESTIMATE: \$90K**

Funding Source: Stormwater Improvement Fee

### ESTIMATED SCHEDULE

Construction Fiscal Year: 2026  
Projected Start Date: February 2026  
Projected End Date: January 2027

### CONTACT

Saad ElBakkouri  
813-440-9771  
[Saad.ElBakkouri@tampagov.net](mailto:Saad.ElBakkouri@tampagov.net)

Note: The cost and schedule data shown here are the City's current best estimates and are subject to frequent change



### PROJECT DESCRIPTION

Elmer pond area is located within the North Tampa Closed Basin. This area experiences frequent flooding due to an inadequate drainage system. The proposed project will alleviate the flooding in the area by expanding the existing pond on the recently acquired properties adjacent to the pond to provide additional stormwater storage capacity. The project includes property acquisition, sinkhole, restoration, ponds and control structures construction, existing pond expansion, and pipe installation.

### BENEFITS TO THE COMMUNITY

- Relieve flooding and improve traffic flow and safety.
- Protect water quality and restore natural habitats.
- Supports system and community resiliency to impacts of climate change.
- Reduce pollutant loading into the Bay through water quality enhancements and green infrastructure.



## 6.1.12 NTCB – 99th Ave West Pond Expansion



### PROJECT DETAILS

Neighborhood: Tampa Overlook  
Council District: 7  
Community Redevelopment Area: N/A  
Project ID: 1001176  
Department ID: SW60013

### Project Phase



### PROJECT COST ESTIMATE: \$50K

Funding Source: Stormwater Improvement Fee

### ESTIMATED SCHEDULE

Construction Fiscal Year: 2026  
Projected Start Date: December 2025  
Projected End Date: June 2026

### CONTACT

Saad ElBakkouri  
813-440-9771  
[Saad.ElBakkouri@tampagov.net](mailto:Saad.ElBakkouri@tampagov.net)

Note: The cost and schedule data shown here are the City's current best estimates and are subject to frequent change

### PROJECT DESCRIPTION

The project is part of the overall North Tampa Closed Basin Stormwater Improvements. The proposed project will expand the existing pond on the recently acquired properties adjacent to the existing pond to provide additional storage capacity for the area. The project includes property acquisition, pond construction, and pipe installation.

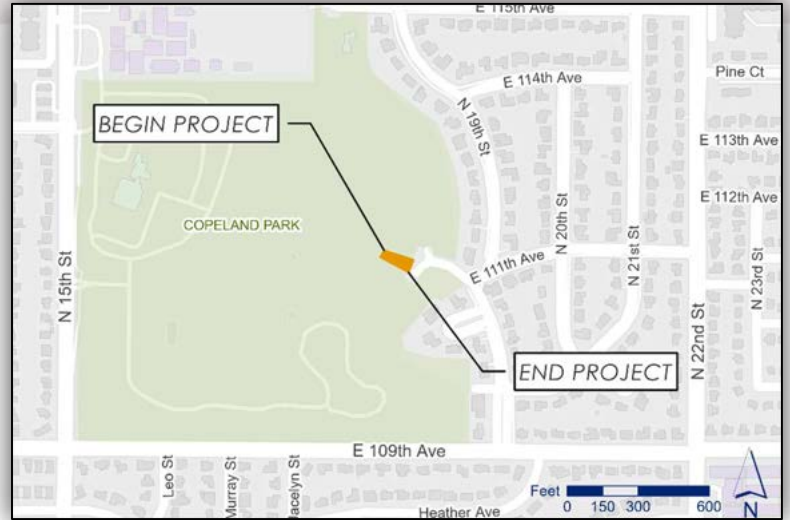
### BENEFITS TO THE COMMUNITY

- Relieve flooding and improve traffic flow and safety.
- Protect water quality and restore natural habitats.
- Supports system and community resiliency to impacts of climate change.
- Reduce pollutant loading into the Bay through water quality enhancements and green infrastructure.

## 6.2.1 Copeland Park Pumping Station

### PROJECT DETAILS

Neighborhood: University Square  
Council District: 7  
Community Redevelopment Area: N/A  
Project ID: 1001370  
Department ID: SW50009



### Project Phase



### PROJECT COST ESTIMATE: \$325K

Funding Source: Stormwater Improvement Fee

### ESTIMATED SCHEDULE

Construction Fiscal Year: 2025  
Start Date: January 2025  
Projected End Date: June 2025

### CONTACT

Brett Sillman  
813-274-1856  
[Brett.Sillman@tampagov.net](mailto:Brett.Sillman@tampagov.net)

Note: The cost and schedule data shown here are the City's current best estimates and are subject to frequent change

### PROJECT DESCRIPTION

This project is to construct a stormwater pump station to address flooding conditions in Copeland Park. Currently, a temporary pump is utilized to drain the low-lying area. A permanent pump station is proposed to replace the need for a temporary pump. This station will be controlled remotely through the City's SCADA system.

### BENEFITS TO THE COMMUNITY

- Relieve flooding and improve traffic flow and safety.



## 6.2.2 Lantana-Poinsettia Pumping Station

### PROJECT DETAILS

Neighborhood: North Tampa Community  
Council District: 7  
Community Redevelopment Area: N/A  
Project ID: 1001527  
Department ID: SW50007

### Project Phase



### PROJECT COST ESTIMATE: \$325K

Funding Source: Stormwater Improvement Fee

### ESTIMATED SCHEDULE

Construction Fiscal Year: 2026  
Projected Start Date: January 2026  
Projected End Date: September 2026

### CONTACT

Brett Sillman  
813-274-1856  
[Brett.Sillman@tampagov.net](mailto:Brett.Sillman@tampagov.net)

Note: The cost and schedule data shown here are the City's current best estimates and are subject to frequent change

### PROJECT DESCRIPTION

This project is to construct a stormwater pump station to address flooding conditions at the intersection of Lantana Ave. and Poinsettia Ave. Currently, a temporary pump is utilized to drain the low-lying area. A permanent pump station is proposed to replace the temporary pump. This station will be controlled remotely through the City's SCADA system.

### BENEFITS TO THE COMMUNITY

- Relieve flooding and improve traffic flow and safety.

## 6.3.1 Clark & 30<sup>th</sup> St Pipe Relocation

### PROJECT DETAILS

Neighborhood: Palmetto Beach  
Council District: 5  
Community Redevelopment Area: N/A  
Project ID: 1002113  
Department ID: SW60001



### Project Phase

PLANNING

DESIGN

PROCUREMENT

**CONSTRUCTION**

CLOSEOUT

### PROJECT COST ESTIMATE: \$225K

Funding Source: Stormwater Improvement Fee

### ESTIMATED SCHEDULE

Construction Fiscal Year: 2024  
Start Date: October 2023  
Projected End Date: April 2025

### CONTACT

Saad ElBakkouri  
813-440-9771  
[Saad.ElBakkouri@tampagov.net](mailto:Saad.ElBakkouri@tampagov.net)

Note: The cost and schedule data shown here are the City's current best estimates and are subject to frequent change

### PROJECT DESCRIPTION

The current building at 101 South 34th Street was constructed on top of an existing stormwater pipe. The proposed project will relocate the existing piping system and abandon the section of pipe that is under the building.

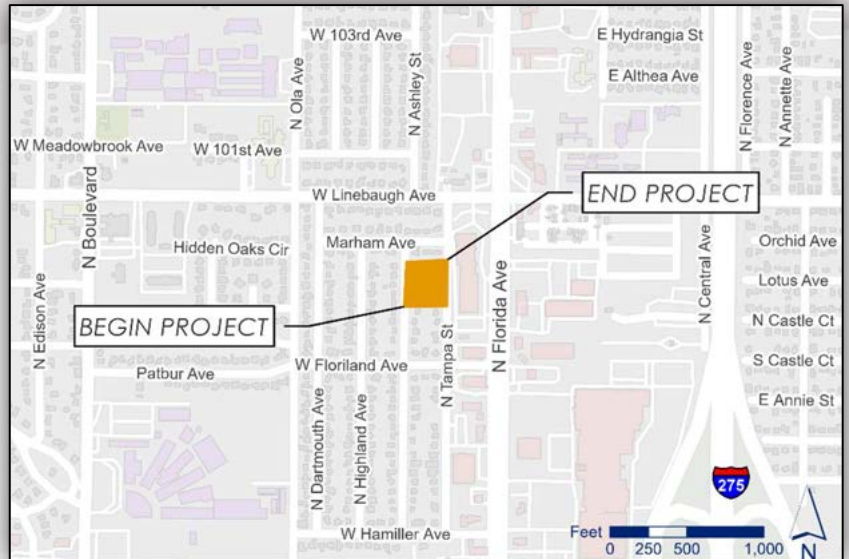
### BENEFITS TO THE COMMUNITY

- Relieve flooding and improve traffic flow and safety.

## 6.3.2 N. Ashley Pond Expansion

### PROJECT DETAILS

Neighborhood: East Forest Hills  
Council District: 7  
Community Redevelopment Area: N/A  
Project ID: 1001955  
Department ID: SW60004



### Project Phase

PLANNING

DESIGN

PROCUREMENT

**CONSTRUCTION**

CLOSEOUT

### PROJECT COST ESTIMATE: \$75K

Funding Source: Stormwater Improvement Fee

### ESTIMATED SCHEDULE

Construction Fiscal Year: 2025  
Projected Start Date: August 2025  
Projected End Date: December 2025

### CONTACT

**Brett Sillman**  
813-274-1856  
[Brett.Sillman@tampagov.net](mailto:Brett.Sillman@tampagov.net)

Note: The cost and schedule data shown here are the City's current best estimates and are subject to frequent change

### PROJECT DESCRIPTION

Currently there is substantial flooding on N Tampa St east of the existing Ashley stormwater pond. The project consists of the expansion of the existing stormwater pond to alleviate flooding in the neighborhood.

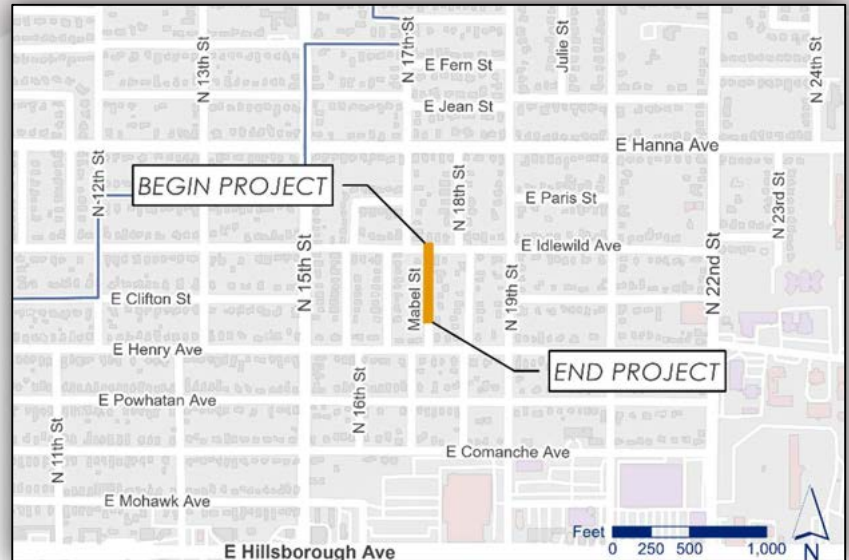
### BENEFITS TO THE COMMUNITY

- Relieve flooding and improve traffic flow and safety.
- Protect water quality and restore natural habitats.
- Supports system and community resiliency to impacts of climate change.
- Reduce pollutant loading into the Bay through water quality enhancements and green infrastructure.

## 6.3.3 Mabel North of Henry

### PROJECT DETAILS

Neighborhood: Old Seminole Heights  
Council District: 5  
Community Redevelopment Area: N/A  
Project ID: 1001955  
Department ID: SW60006



### Project Phase

PLANNING

DESIGN

PROCUREMENT

**CONSTRUCTION**

CLOSEOUT

### PROJECT COST ESTIMATE: \$90K

Funding Source: Stormwater Improvement Fee

### ESTIMATED SCHEDULE

Construction Fiscal Year: 2025  
Projected Start Date: June 2025  
Projected End Date: December 2025

### CONTACT

Brett Sillman  
8132741856  
[Brett.Sillman@tampagov.net](mailto:Brett.Sillman@tampagov.net)

Note: The cost and schedule data shown here are the City's current best estimates and are subject to frequent change

### PROJECT DESCRIPTION

A low-lying portion of Mabel St between Henry Ave. and Idlewild Ave experiences frequent flooding due to insufficient drainage capacity and lack of an existing stormwater system. This project consists of the construction of a gravity stormwater system along Mabel St. to connect to an existing system on Idlewild Ave.

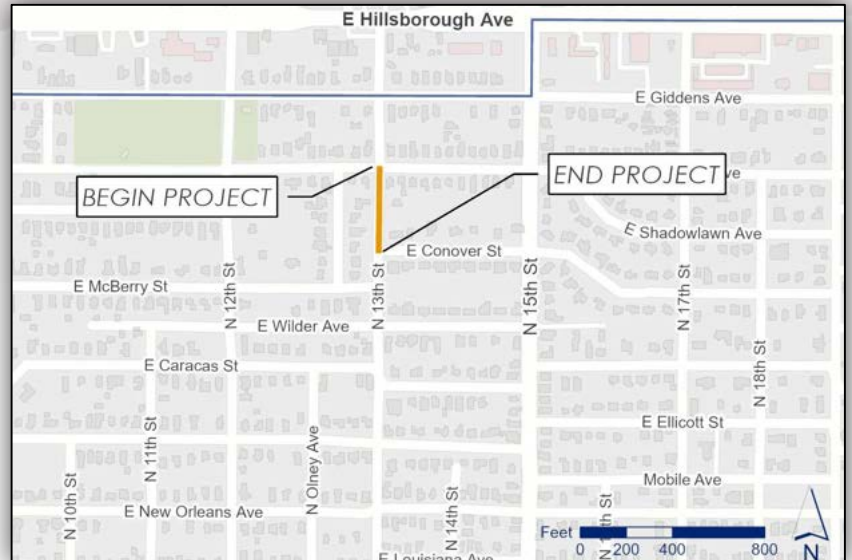
### BENEFITS TO THE COMMUNITY

- Relieve flooding and improve traffic flow and safety.

## 6.3.4 Conover & 13<sup>th</sup>

### PROJECT DETAILS

Neighborhood: Southeast Seminole Heights  
Council District: 5  
Community Redevelopment Area: N/A  
Project ID: 1001176  
Department ID: SW60009



### Project Phase

PLANNING

**DESIGN**

PROCUREMENT

CONSTRUCTION

CLOSEOUT

### PROJECT COST ESTIMATE: \$90K

Funding Source: Stormwater Improvement Fee

### ESTIMATED SCHEDULE

Construction Fiscal Year: 2025  
Projected Start Date: June 2025  
Projected End Date: December 2025

### CONTACT

Jeff DeBosier  
813-274-8428  
[Jeff.Debosier@tampagov.net](mailto:Jeff.Debosier@tampagov.net)

Note: The cost and schedule data shown here are the City's current best estimates and are subject to frequent change

### PROJECT DESCRIPTION

Intersection area of 13th Street and Conover Street experiences frequent flooding due to insufficient drainage capacity. The proposed project consists of construction of new pipes and inlets connecting to the existing drainage system to alleviate the flooding.

### BENEFITS TO THE COMMUNITY

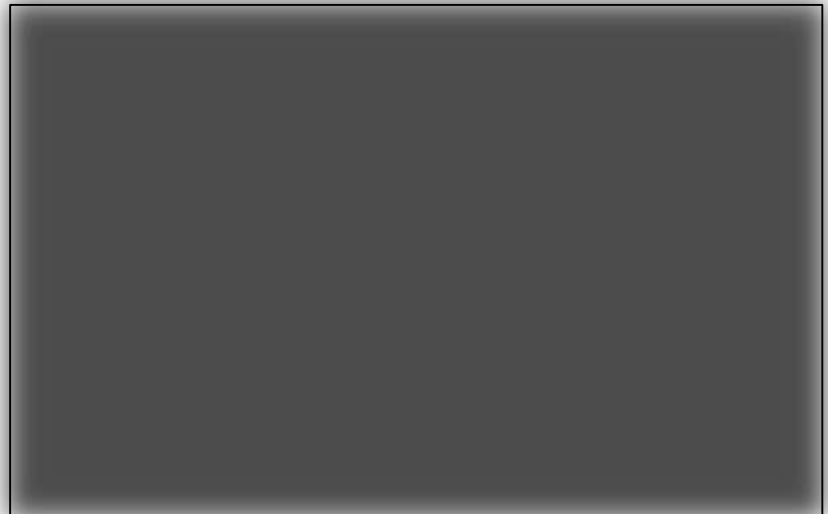
- Relieve flooding and improve traffic flow and safety.



## 6.3.5 NTCB – 99th Ave East Pond Expansion

### PROJECT DETAILS

Neighborhood: Tampa Overlook  
Council District: 7  
Community Redevelopment Area: N/A  
Project ID: 1001176  
Department ID: SW50020



### Project Phase



### PROJECT COST ESTIMATE: \$100K

Funding Source: Stormwater Improvement Fee

### ESTIMATED SCHEDULE

Construction Fiscal Year: 2024  
Start Date: April 2024  
End Date: August 2024

### CONTACT

Saad ElBakkouri  
813-440-9771  
[Saad.ElBakkouri@tampagov.net](mailto:Saad.ElBakkouri@tampagov.net)

Note: The cost and schedule data shown here are the City's current best estimates and are subject to frequent change

### PROJECT DESCRIPTION

The project is part of the overall North Tampa Closed Basin Stormwater Improvements. The proposed project will expand the existing pond on the recently acquired properties adjacent to the existing pond to provide additional storage capacity for the area. The project includes property acquisition, pond construction, and pipe installation.

### BENEFITS TO THE COMMUNITY

- Relieve flooding and improve traffic flow and safety.
- Protect water quality and restore natural habitats.
- Supports system and community resiliency to impacts of climate change.
- Reduce pollutant loading into the Bay through water quality enhancements and green infrastructure.



## B. Stormwater Capital Improvement Bond Program Report

**City of Tampa  
Budget Office  
Stormwater Assessment Revenue Bonds, Series 2018 (Fund 31800)  
December 31, 2024**

**Cash Analysis:**

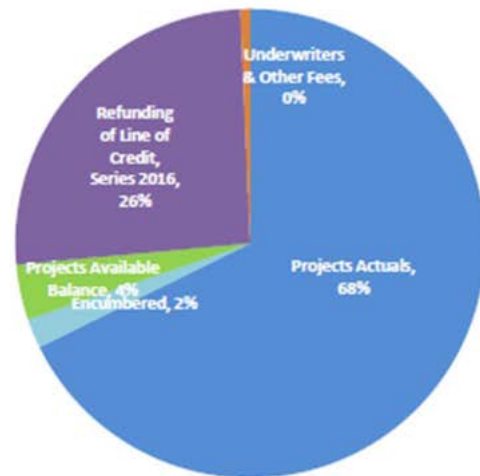
<b>Sources</b>	
Bond Proceeds	\$84,560,000
Premium, net of Discount	13,222,033
Interest Earnings	2,965,605
<b>Total Sources</b>	<b>\$100,747,638</b>

<b>Uses</b>	
Underwriters & Other Fees	(\$692,018)
Projects Actuals	(68,875,078)
Refunding of Line of Credit, Series 2016	(26,220,000)
<b>Total Amount Expended</b>	<b>(\$95,787,095)</b>

Available Cash \$4,960,543

**Available Funding for Projects:**

Available Cash	\$4,960,543
Encumbered	(2,066,351)
Projects Available Balance	(3,867,747)
<b>Available for Projects</b>	<b>(\$973,554)</b>



**Spend-Down Schedule:**

6 Months (10/26/2018)	10%	\$10,074,764
12 Months (04/26/2019)	45%	\$45,336,437
18 Months (10/26/2019)	75%	\$75,560,729
24 Months (04/26/2020)	100%	\$100,747,638

Percentage Spent - Dec 2024(1) 95%  
Bond Issuance Date 4/26/2018

Interest Earning Rate 1.49%  
Bond Yield Rate 3.02%

**Details:**

Project Name	Project Number	Budget	Actuals	Encumbrance	Available Balance
43rd Street Outfall Regional Drainage Improv	1000151	\$5,241,152	\$4,985,594	\$0	\$255,558
Upper Peninsula Flooding Relief, Phase II	1000178	3,880,115	3,850,062	0	30,053
Orchid Sink Rehabilitation	1000384	508,586	508,586	0	0
Watrous Ditch Rehabilitation	1000386	60,581	14,822	0	45,759
30th Street Outfall	1000580	28,794	28,794	0	0
Box Culvert Rehabilitation	1000581	2,250,822	2,124,848	0	125,974
Howard Ave Flooding Relief Swann to Morrison	1000749	437,038	404,049	0	32,989
Lower Peninsula Watershed Plan - Southeast	1000750	2,607,506	2,307,355	292,731	7,421



Mobility Department  
Stormwater Engineering Division

Project Name	Project Number	Budget	Actuals	Encumbrance	Available Balance
Ditch Rehabilitation	1000751	121,259	107,849	0	13,410
Southeast Seminole Heights Flood Relief	1000773	11,503,253	10,597,332	145,334	760,587
Upper Peninsula Watershed Drainage Imprv	1001017	16,487,267	16,438,949	47,716	603
Cypress St Outfall Regional Stormwater Improv	1001018	16,719,297	15,414,339	973,165	331,793
Annual CIPP Rehabilitation	1001151	91,970	0	91,970	0
Hamilton Creek Water Quality Improvements	1001169	149,906	125,506	24,400	0
Lamb Canal Rehabilitation	1001171	400,058	257,121	39,298	103,640
North Tampa Closed Basins	1001173	4,463,061	4,347,582	53,935	61,544
Failed Pipe CIPP	1001175	2,343,405	1,963,101	0	380,304
In House Flooding Relief & Failed Pipe Repl	1001176	815,711	743,259	62,654	9,798
Consultants and Land Acquisition	1001218	1,252,306	1,069,575	182,731	0
ST Annual Contract - Copeland Park Flooding	1001370	1,524,000	1,076,081	11,734	436,185
Anita Subdivision Flooding Phase II	1001371	1,387,058	293,064	0	1,093,994
In House Flooding Relief-45th St N of Hillsborough	1001406	229,649	229,649	0	0
In House Flooding Relief - Rambla Street	1001428	36,247	36,247	0	0
W Saint Isabel from Gomez to Habana Flooding	1001437	124,116	19,236	104,880	0
Virginia Ave Pumping Station Drainage Improv	1001597	407,536	371,082	30,000	6,454
Delaware, Oregon & Dakota Groundwater	1001948	470,000	0	0	470,000
El Portal and Newport Avenue Pumping Station	1001951	353,915	344,692	5,803	3,420
Salaries for CIP and Cost Allocation	0000000	914,566	1,077,916	0	(163,350)
Other	0000000	0	138,389	0	(138,389)
<b>Projects Total<sup>(2)</sup></b>		<b>\$74,809,175</b>	<b>\$68,875,078</b>	<b>\$2,066,351</b>	<b>\$3,867,747</b>
Refunding of Line of Credit, Series 2016		26,220,000	26,220,000	0	0
Underwriters & Other Fees		692,018	692,018	0	0
Available for Projects		(973,554)	0	0	(973,554)
<b>Grand Total</b>		<b>\$100,747,638</b>	<b>\$95,787,095</b>	<b>\$2,066,351</b>	<b>\$2,894,193</b>

<sup>(1)</sup> "Percentage Spent" is calculated based on cash on hand and not the "Available Cash". Cash on hand (\$5,275,754) is equal to the "Available Cash" (\$4,960,543) plus the future payment of retainage payables (\$315,211). Percentage Spent= 100% - (Cash on Hand / Total Sources).

<sup>(2)</sup> Includes \$3,953,586 of anticipated interest earnings, from which \$973,554 is unearned interest, net of unused issuance costs.



City of Tampa  
Budget Office  
Stormwater Assessment Revenue Bonds, Series 2021 (Fund 31801)  
December 31, 2024

**Cash Analysis:**

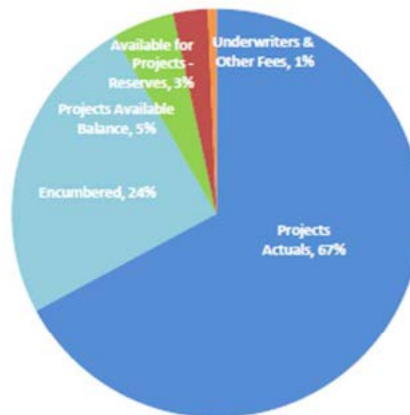
<b>Sources</b>	
Bond Proceeds	\$36,615,000
Premium, net of Discount	8,173,542
Interest Earnings	1,685,675
<b>Total Sources</b>	<b>\$46,474,217</b>

<b>Uses</b>	
Underwriters & Other Fees	(\$303,030)
Projects Actuals	(31,210,617)
<b>Total Amount Expended</b>	<b>(\$31,513,647)</b>

Available Cash \$14,960,570

**Available Funding for Projects:**

Available Cash	\$14,960,570
Encumbered	(11,416,643)
Projects Available Balance	(2,269,462)
<b>Available for Projects - Reserves</b>	<b>\$1,274,464</b>



**Spend-Down Schedule:**

6 Months (4/7/2022)	10%	\$4,647,422
12 Months (10/7/2022)	45%	\$20,913,398
18 Months (4/7/2023)	75%	\$34,855,663
24 Months (10/7/2023)	100%	\$46,474,217

Percentage Spent - Dec 2024(1) 66%  
Bond Issuance Date 10/7/2021

Interest Earning Rate 1.73%  
Bond Yield Rate 1.56%  
Cumulative Rebate Amount (Due Oct 2026) \$159,060

**Details:**

Project Name	Project Number	Budget	Actuals	Encumbrance	Available Balance
Lower Peninsula Watershed Plan	1000750	18,695,266	18,528,901	69,273	97,092
Southeast Seminole Heights Flood Relief	1000773	6,500,000	4,814,048	857,711	828,241
North Tampa Closed Basins	1001173	1,000,000	350	0	999,650
Consultants and Land Acquisition	1001218	375,000	375,000	0	0
Comprehensive Infrastructure for Neighborhoods	1001913	8,756,625	6,112,469	2,644,156	0
South Howard Flood Relief and Streetscape	1002448	8,243,375	71,682	7,845,504	326,190
Cost Allocation	0900007	1,326,457	1,308,168	0	18,289
<b>Projects Total</b>		<b>\$44,896,723</b>	<b>\$31,210,617</b>	<b>\$11,416,643</b>	<b>\$2,269,462</b>

Project Name	Project Number	Budget	Actuals	Encumbrance	Available Balance
Underwriters & Other Fees		303,030	303,030	0	0
Available for Projects		1,274,464	0	0	1,274,464
<b>Grand Total</b>		<b>\$46,474,217</b>	<b>\$31,513,647</b>	<b>\$11,416,643</b>	<b>\$3,543,927</b>

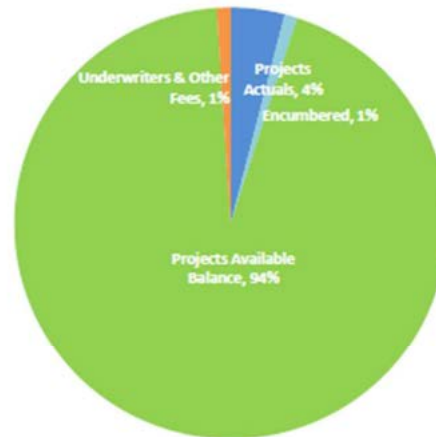
<sup>(1)</sup> "Percentage Spent" is calculated based on cash on hand and not the "Available Cash". Cash on hand (\$15,924,494) is equal to the "Available Cash" (\$14,960,570) plus the future payment of retainage payables (\$963,924). Percentage Spent= 100% - (Cash on Hand / Total Sources).



**City of Tampa  
Budget Office  
Stormwater Assessment Revenue Bonds, Series 2023 (Fund 31802)  
December 31, 2024**

**Cash Analysis:**

<b>Sources</b>	
Bond Proceeds	\$34,935,000
Premium, net of Discount	1,222,359
Interest Earnings	861,566
<b>Total Sources</b>	<b>\$37,018,925</b>
<b>Uses</b>	
Underwriters & Other Fees	(\$384,242)
Projects Actuals	(1,500,105)
<b>Total Amount Expended</b>	<b>(\$1,884,347)</b>
Available Cash	\$35,134,578



**Available Funding for Projects:**

Available Cash	\$35,134,578
Encumbered	(349,626)
<b>Projects Available Balance</b>	<b>(34,943,364)</b>
Available for Projects	(\$158,412)

**Spend-Down Schedule:**

6 Months (5/16/2024)	10%	\$3,701,893
12 Months (11/16/2024)	45%	\$16,658,516
18 Months (5/16/2025)	75%	\$27,764,194
24 Months (11/16/2025)	100%	\$37,018,925

Percentage Spent - Dec 2024(1) 5%  
Bond Issuance Date 11/16/2023

Interest Earning Rate 2.37%  
Bond Yield Rate 4.57%

**Details:**

Project Name	Project Number	Budget	Actuals	Encumbrance	Available Balance
Lower Peninsula Watershed Plan - Southeast	1000750	\$20,900,000	\$0	\$0	\$20,900,000
Lamb Canal Rehabilitation	1001171	7,000,000	119,134	80,696	6,800,170
Vasconia Street to Obispo Street Flooding Relief	1001585	5,395,000	0	0	5,395,000
Golfview Estates Flooding Relief	1002447	905,000	639,536	264,406	1,058
South Howard Flood Relief and Streetscape	1002448	1,912,741	99,176	4,524	1,809,041
Cost Allocation	0900007	680,354	642,259	0	38,095
<b>Projects Total<sup>(2)</sup></b>		<b>\$36,793,095</b>	<b>\$1,500,105</b>	<b>\$349,626</b>	<b>\$34,943,364</b>

Project Name	Project Number	Budget	Actuals	Encumbrance	Available Balance
Underwriters & Other Fees		384,242	384,242	0	0
Available for Projects		(158,412)	0	0	(158,412)
<b>Grand Total</b>		<b>\$37,018,925</b>	<b>\$1,884,347</b>	<b>\$349,626</b>	<b>\$34,784,952</b>

<sup>(1)</sup> "Percentage Spent" is calculated based on cash on hand and not the "Available Cash". Cash on hand (\$35,134,578) is equal to the "Available Cash" (\$35,134,578) plus the future payment of retainage payables (\$0). Percentage Spent= 100% - (Cash on Hand / Total Sources).

<sup>(2)</sup> Includes \$993,095 of anticipated interest earnings, from which \$158,412 is unearned interest, net of unused issuance costs and operating expenses.



## C.Stormwater Service Assessment Program Report

### Tampa City Council Update No. 33 - March 2025

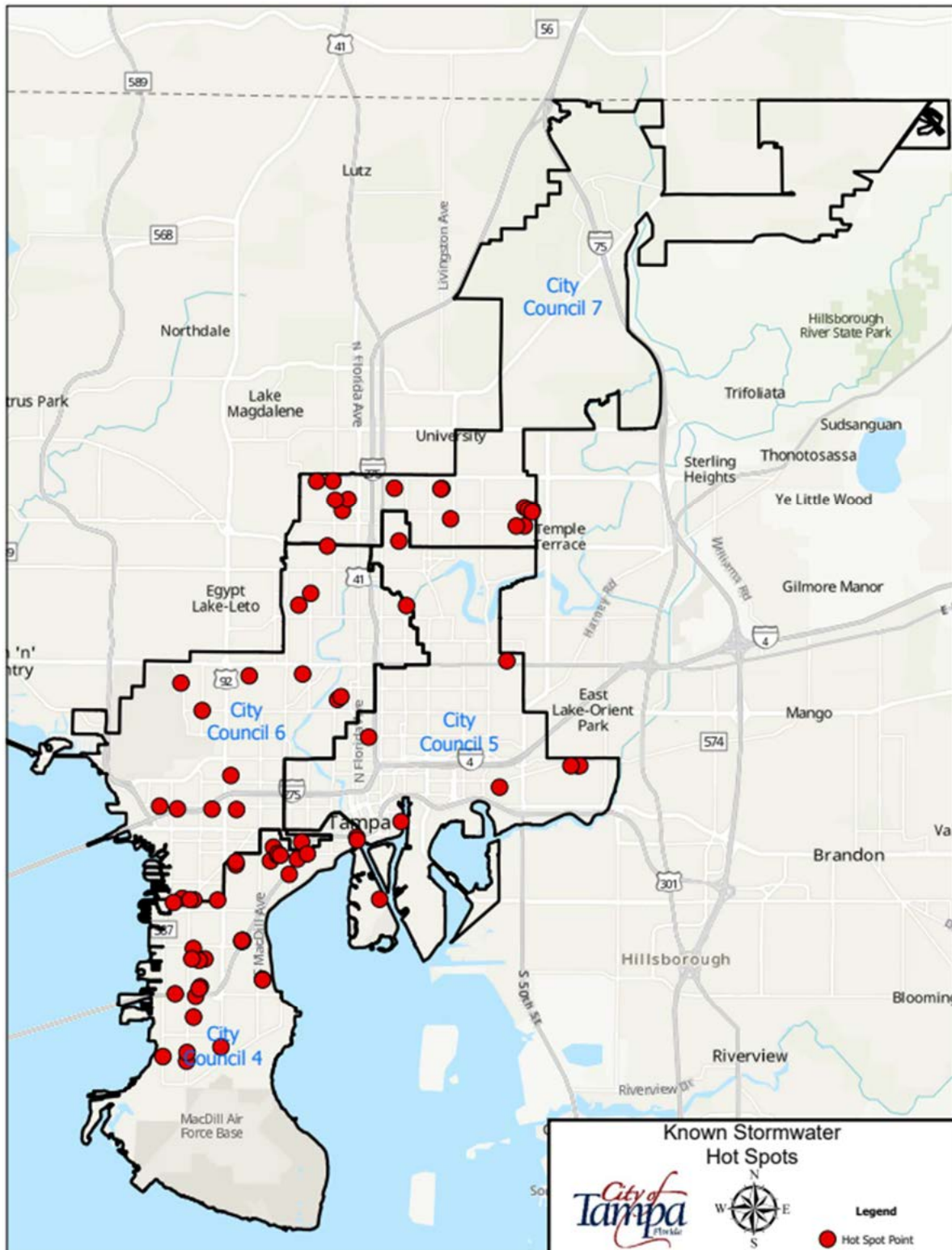
Maintenance activities are reported based on service level frequency. Below is a list of the primary maintenance categories that are being tracked. Along with service level cycle times, we have also provided maintenance statistics for the quarter.

**\*All productivities were severely impacted by Hurricanes Helene and Milton.**

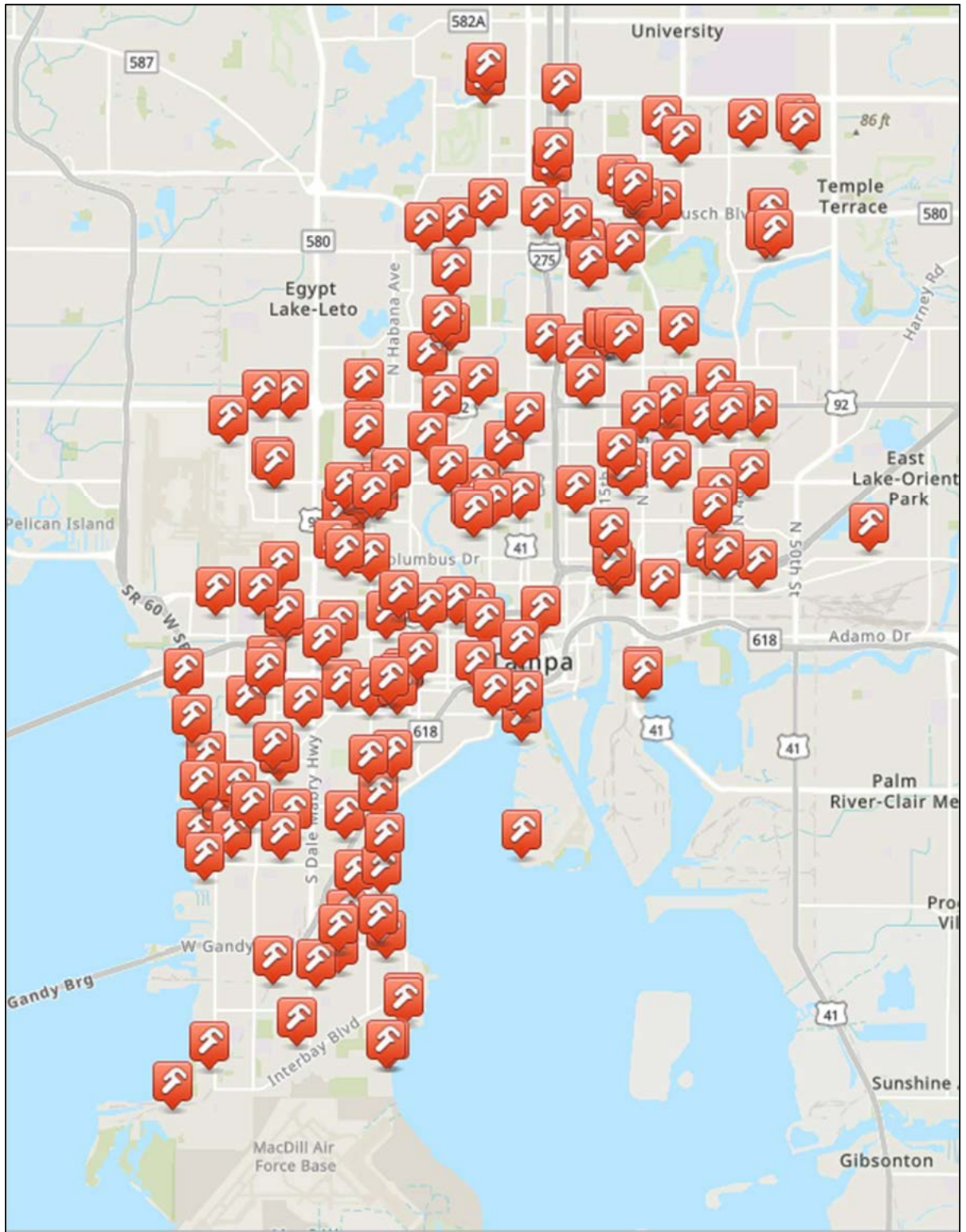
Operations and Maintenance Activities	1 <sup>st</sup> Quarter Maintenance Statistics
Ditches	12,832 linear feet of ditches maintained with 1,255 tons removed, 80 fallen trees removed, 441,765 linear feet of ditch mowed monthly with 22.2 tons of trash removed.
Ponds	10.53 tons of trash and illegal dumping have been disposed of, there have been 116 herbicide treatments to various ponds, 126 stormwater ponds mowed monthly.
Pipes	163,626 linear feet of storm drainage pipe inspected and maintained, 1,840 storm drain inlets and manholes inspected and maintained with 506 tons of debris removed. 23 cave-ins and 32 inlet tops repaired.
Outfalls	242 outfalls were inspected and maintained.
Pumps	Preventative Maintenance provided to thirteen (13) stormwater pump stations.
Street Sweeping	922 curb miles were swept, approximately 228.92 tons of debris removed.

Activity Type	1 <sup>st</sup> Quarter Department Activities Relating to Findings Pertaining to Ditches/Swales
Micro Projects	There is no new activity for project development to remedy historic activity.
Maintenance Activities	There are no locations that are currently being reviewed by Operations staff.

### Stormwater Hot Spots



### Work Orders Completed October – December 2024 (Total 172)



### Inlet Opening Cleaning – W. Cherry St. and N. MacDill Ave.

Before



After

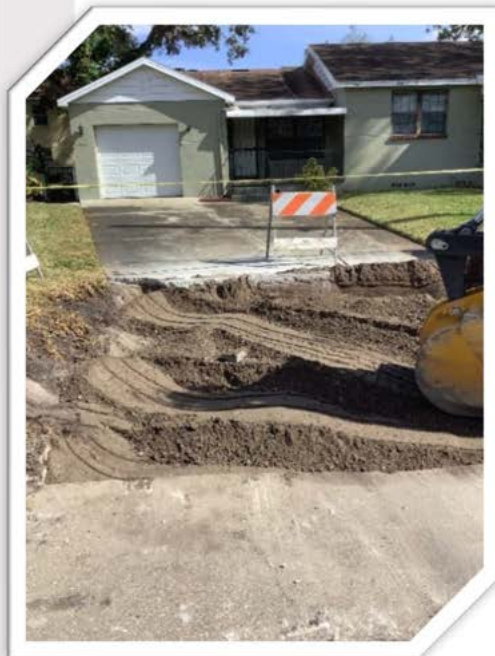


**Cave-in – 410 S. Matanzas Ave.**

**Before**



**During**



**After**

### Inlet Top Repair – 4804 S. Dauphin Ave

**Before**



**During**



**After**

**Ditch Grading – N. Hale Ave.**



**Before**

**After**

