



Capital Improvement Program (CIP) Viewer User Guide



What is the CIP Viewer?

The Capital Improvement Program Viewer is an interactive application that contains information about current and upcoming capital improvement projects within the City of Tampa. Capital improvement projects include everything from the construction of new buildings and infrastructure, to the rehabilitation and expansion of existing facilities. At this time, the CIP viewer includes four project types: stormwater, transportation, wastewater and water. Additional project types will be added in the future.

When you first open this application, you'll see a dashboard organized into four sections:

project filters, a list of projects, a map, and project details as shown in Figure 1. The information that appears will change to reflect the criteria you select.

You can locate projects using the project filters or the map view, then click on the selected project to get additional information.

This application will be updated on a monthly basis when new information becomes available, such as new projects or updated construction dates, or when a project enters a new phase, for example, moving from the design phase to the procurement phase.

How can you access the CIP Viewer?

The CIP Viewer can be found on [Tampa.gov/projects](https://tampa.gov/projects).

This application is best viewed from a desktop computer that uses Google Chrome, Safari, Firefox or Microsoft Edge.

Figure 1 CIP Program Viewer Dashboard

Using the project filters

The project filter, located on the left side of the dashboard as shown in Figure 2, allows you to limit the display to only those projects that meet your specified criteria. You can select one or more filters to narrow your search results. The information that appears on the dashboard will automatically change to match the criteria you've selected. To remove the filter, click on the items previously selected.

Available Filters

- **Project type.** The map currently includes projects for stormwater, transportation, wastewater and water. Additional project types will be added in the future.
- **Project phase.** Projects can be in one of five phases: planning, design, procurement, construction, or closeout.
 - ▶ **Planning:** The scope of the project is prepared and cost and construction dates are estimated.
 - ▶ **Design:** The project is being designed and funding sources are identified. Real estate acquisition is also part of this phase.
 - ▶ **Procurement:** The project is advertised for bidding and consultants/contractors go through the City's selection process; contracts are negotiated and executed.
 - ▶ **Construction:** This stage includes any permitting, if required, the entire construction period and final inspection and testing.
 - ▶ **Closeout:** During this stage final payments are made and the contract is closed. A project will stay in this phase until the warranty period has ended. Closeout can also refer to cancelled projects which is indicated by the closeout status "Cancelled".
- **Construction fiscal year.** This is the fiscal year when a project is scheduled to begin construction. Tampa's fiscal year runs from October 1 – September 30.
- **Funding source.**
- **City Council district.**
- **Neighborhood.**
- **Community redevelopment area** (also known as a CRA).

The screenshot shows a sidebar of filters for a project dashboard. The filters are organized into several sections:

- Project Type:** A list of checkboxes for Stormwater, Transportation, Wastewater, and Water.
- Project Phase:** A set of buttons for Planning, Design, Procurement, Construction, and Closeout.
- Construction Fiscal Year:** A grid of buttons for years 2019, 2020, 2021, 2022, 2023, 2024, and 2025.
- Funding Source:** A list of checkboxes for various funding sources like Grants, Local Option Gas Tax, etc.
- City Council District:** A set of buttons for districts 4, 5, 6, and 7.
- Neighborhood:** A dropdown menu currently set to 'None'.
- Community Redevelopment Area:** A dropdown menu currently set to 'None'.

Figure 2
Project Filters

To select a specific neighborhood or CRA, click on the down arrow and click on the neighborhood or CRA to view projects in that area.

Using the interactive map

The interactive map provides another way to filter and view projects. Each dot on the map reflects a specific project. The dots are color coded and represent different project types as shown in Figure 3. To view a legend of the project types, click on the legend icon on the map. (See Figure 4.)

The CIP Viewer offers multiple ways to navigate the map view, as shown on Figure 3:

- **Address locator:** Use the address locator by clicking on the magnifying glass to find projects near a specific location. The viewer will zoom the map to view the address you've entered.
- **Home:** Click the Home button to zoom all the way out and reset the map view to the default setting. (Be sure to uncheck any filters you may have selected in the projects filter panel to view all projects.)
- **Zoom tools:** Use the plus and minus icons in the lower right-hand corner of the map to zoom in and out.
- **Pan tools:** Click on the map then drag your mouse/cursor to move the map. This will not change the zoom level.

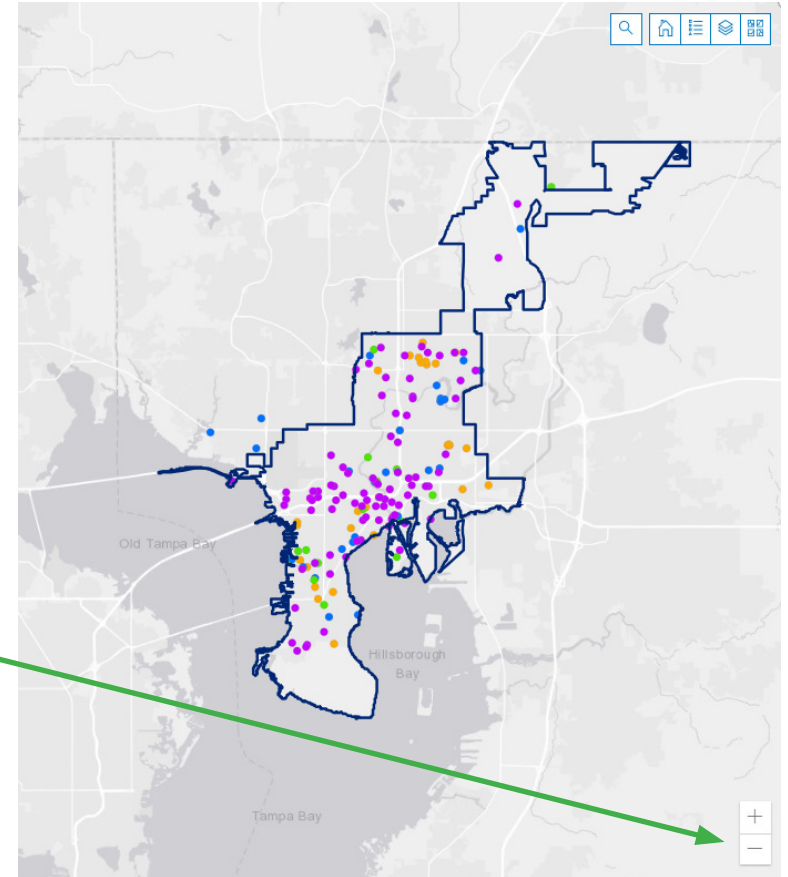


Figure 3 Interactive Map

Map Functions

Address locator: Type in an address to find projects near a specific location.



Figure 4 Map Functions

Home: Resets the map to the default setting.

Legend: View a color-coded legend of project types.

Map backgrounds: Allows you to change the base map to find one that may better meet your needs.

Layers: The default map reflects the city limits of the City of Tampa. This application includes additional layers that show neighborhoods, council districts, and the service areas for the Tampa Water Department and the Wastewater Department, which includes parts of unincorporated Hillsborough County.

Viewing project details

To learn more about a specific project, select one of the projects that appear on the Project List. The project page includes the following information, as shown in Figure 5:

1. **A Project Overview:** A brief project description and rationale; estimated project costs; projected start and end dates for construction; the current project phase and status; the neighborhood and council district where the project is located; and the contact information for the designated point of contact.
2. **A PDF project fact sheet** that you can print or save to your computer.
3. **A link to the project website** (if applicable).
4. **Links to any additional attachments** (if available).

Foundation for Tampa's Neighborhoods Project_East Tampa Area

Project ID: WTR-20-0002.3

Department ID: WTR-20-0002.3

1

Description

The Foundation for Tampa's Neighborhoods Project_East Tampa Area will improve the City of Tampa's water distribution system by replacing the existing water mains and increasing the capacity of the system. It will also improve our ability to serve a growing population. Approximately 35,271 Linear Feet of water mains ranging from 2 to 12 inches in diameter will be replaced and upgraded.

Rationale

This project will replace the aging water mains in this area with new and larger diameter water mains, improving water pressure and water quality while reducing the number of service interruptions that might have been caused by main breaks or leakage.

Construction Fiscal Year
2022

Funding Source
PIPES

Projected Start Date
September 24, 2022

Projected End Date
September 29, 2024

Project Cost
\$9,310,524

Phase



Status

30% Design Completion

Neighborhood

Jackson Heights

Council District

5

Community Redevelopment Area (CRA)

East Tampa

Contact

Darren Alfonso

813-324-1251

DarrenA@ConsultVistra.com

Project Fact Sheet (Printable): WTR-20-0002.3

2

[Project Website](#)

3

Note: The cost and schedule data shown here are the City's current best estimates and are subject to change. Data is current as of the 15th of each month.



WTR-20-0002.3_Project Description_East Tampa.pdf

4

Figure 5 Project Page