

CITY OF TAMPA'S

LIFT UP

LOCAL

ECONOMIC RECOVERY PLAN

Business Recovery Strategy



Restaurant & Retail Recovery Program – Phase 1



- **April 29 Governor's Order** -Phased re-opening of restaurants and retail beginning Monday, May 4
 - limiting capacity to 25%
 - 6-feet separation between patrons
- **City of Tampa Business Recovery Initiative – Phase 1 –** Program to enable businesses to expand capacity and safely serve more patrons.
 1. Enable use of Private sidewalks for Seating or Retail Space (subject to landlord/mgt approval)**
 2. Approve Parklets in public ROW and/or on-street parking
 3. Establish 8 'Business Recovery Zones' (Street Closures)
- **14 Day Pilot**

Temporary Use of Sidewalk

Sidewalk Activation – temporary use of sidewalk for restaurant seating or retail



- Temporarily waiving permit requirement
- Limited to adjacent frontage
- Subject to landlord/property management approval, if applicable
- ADA and other access standards and guidance apply
- 6-foot separation (backs of chairs) must be met



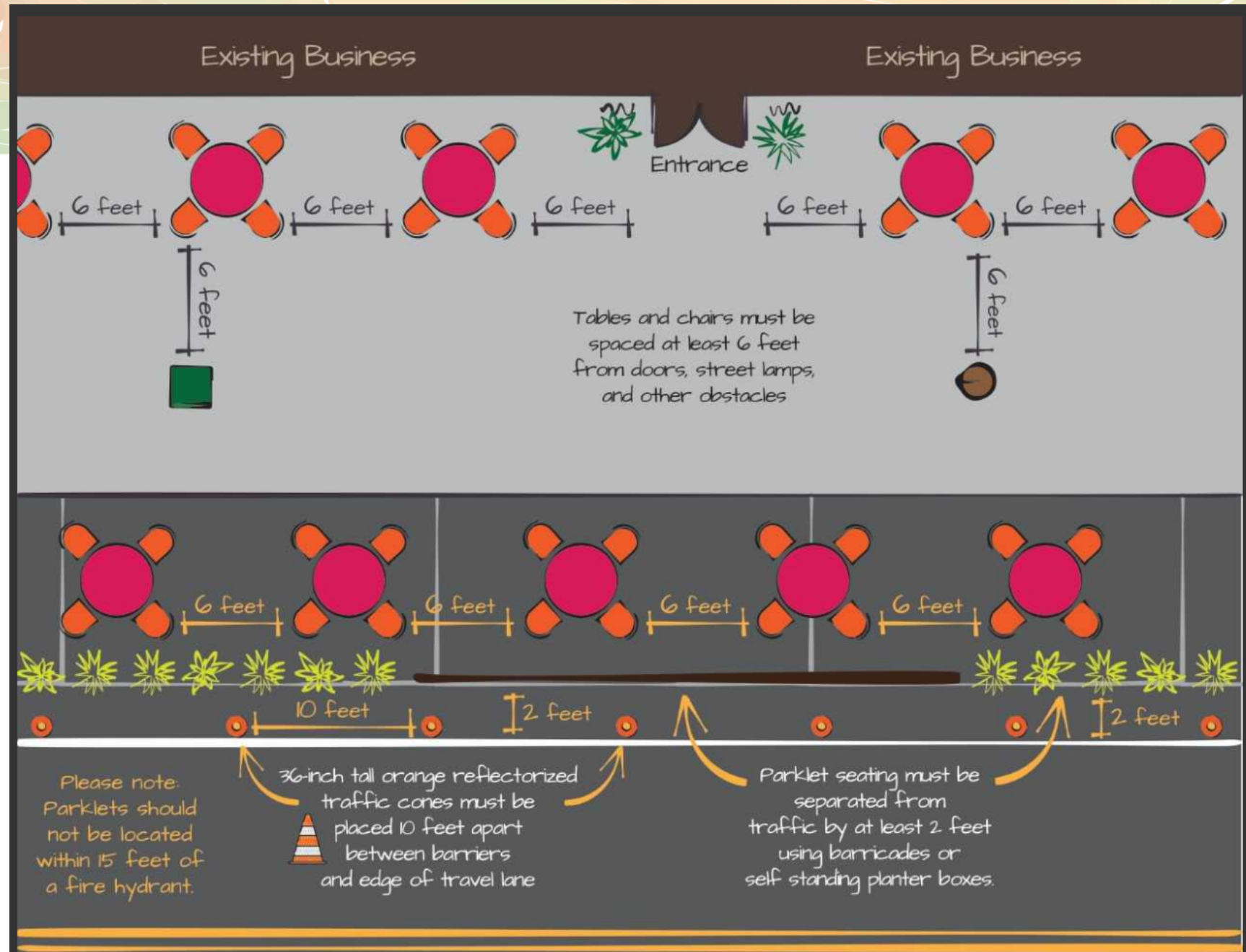
Parklets

Parklets – Enable temporary use of on-street parking or other ROW (private or public)

- Traffic operations unchanged
- Each business must activate and appropriately protect its own space per guidance document
- Must remove daily
- Subject to landlord/property manager approval, if applicable
- May not use spaces designated for disabled parking
- For use of metered spaces:
 - Initiate requests to the City's Mobility Team via the Recovery Call Center (833-TPA-INFO)
 - City to bag metered spaces



Sample Parklet



Business Recovery Zones

- 8 designated 'Recovery zones' (street closures) for businesses in concentrated areas
- Closure materials will be left in place for the 14-day pilot (except SOHO)
- Outdoor space may be used during normal business operating hours (except SOHO)
- 6-feet separation of tables/chair backs required; no loitering
- Intended to help restaurants expand capacity – **not to create a gathering or social space**

Business Recovery Zones

Proposed Recovery Zone Locations and Schedule

	Neighborhood	Street	From	To	Road Closure Hours	Lane Closure
1	Downtown	Twiggs St	Tampa St	Franklin St	24/7	Full
2	Downtown	Franklin St	Madison	Polk	24/7	Full
3	Hyde Park	Swann Ave/Parklet*	Oregon Ave	Rome Ave	24/7	No
4	Hyde Park Village	S. Dakota Ave/W.Snow	Swann Ave	S. Rome Ave	24/7	Full
5	Ybor City	7 th Avenue	15 th Street	21 th Street	24/7	Full
6	Tampa Heights	Franklin St	Kay St	Palm Ave	24/7	Full
7	West River	Grand Central Ave	Kennedy	Hyde Park Ave	24/7	Full
8	SOHO	South Howard	Morrison Ave	Bristol Ave	5pm -10 pm**	Full

** Does not include set-up and take-down time

General Requirements for Use of Outdoor Space

- Governor's Executive Order operating requirements apply
- Face coverings required for staff
- 6-foot separation required from backs of chairs
- Reservations **REQUIRED** for Restaurants participating in use of expanded outdoor space



General Requirements for Outdoor Space

- Use 'sidewalk café' permit restrictions as guidance; no permit required during temporary pilot
- Use of tents/temporary structures must meet safety guidelines
- Tents may not have walls and must have open air flow



Fire Safety Guidance

- Fire Hydrants/Fire Lanes cannot be blocked.
- Propane fueled patio heaters shall not be closer than 10' to any entrance/exit of any structure.
- Heaters of any kind shall not be used under tents or umbrellas.
- Smoking is strictly prohibited in all temporary outside spaces.
- Fire Marshal's office will have staff available to assist with ensuring life safety needs and can be reached by calling 813-274-7000.



Logistics of City Support

- Community and Business Outreach
- City Call Center Hotline Team
- Legal and Code Interpretation
- Fire Safety and Compliance
- Mobility for ROW management
- MOT Planning and support
- Planning & Development permitting
- TPD and Code Enforcement
- Neighborhood and Community Affairs
- Development & Economic Opportunity

Information and Questions:
833-TPA-INFO (872-4636)



CITY OF TAMPA'S

LIFT UP

LOCAL

ECONOMIC RECOVERY PLAN

Q&A

