

Tampa

# SUSTAINABLE TAMPA

*A look at what the City of Tampa is doing to become a truly sustainable city*

## ENVIRONMENTAL, CONSERVATION AND OPERATIONAL INITIATIVES

The City will continue to guide government in enhancing the conservation measures, renewable energy programs and sustainable building practices that for the second time has earned the City of Tampa Green Local Government “Gold” status by the Florida Green Building Coalition.



*Tampa Mayor  
Jane Castor*

*“We are aggressively pursuing solutions that will protect our citizens, create a more resilient city, and establish a more sustainable future to transform Tampa’s tomorrow.”*

THE CITY HAS ORGANIZED ITS ENVIRONMENTAL, CONSERVATION AND OPERATIONAL INITIATIVE INTO FIVE GENERAL AREAS OF SUSTAINABILITY: GREEN SPACES, GREEN ENVIRONMENT, GREEN OPERATIONS, GREEN BUILDING AND GREEN OUTREACH AND EDUCATION.



Green Spaces

[VIEW PROGRESS](#) →



Green  
Environment

[VIEW PROGRESS](#) →



Green  
Operations

[VIEW PROGRESS](#) →



Green  
Building

[VIEW PROGRESS](#) →



Green,  
Outreach &  
Education

[VIEW PROGRESS](#) →



# GREEN SPACES

The City continues to create green spaces to conserve our natural ecosystem, protect our wildlife, create recreation facilities to accommodate sustainable and healthy lifestyles and foster our walkable and bikable urban policies. Some of our newer additions are described here.



Green Spaces



Green Environment



Green Operations



Green Building



Green, Outreach  
& Education

## PARKS

### Curtis Hixon Park

Drainage improvements help control water runoff near the river and reduce turf damage that would require increased fertilizer use. Other improvements include better walk and drives within the park and an improved stage set up area. LED lighting was added to improve energy conservation efforts along the walkways and railings.



### New Tampa Rotary Dog Park

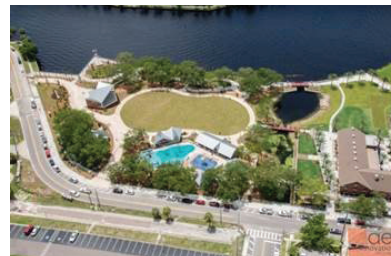
This 0.62 acre site across from New Tampa Community Center facility is divided into small and large dog sections, and offer an ADA-accessible, paved double-gated entry accented by the personalized bricks, drinking fountains with dog bowls, waste receptacles, dog station with disposal bags to avoid environmental contamination, benches and picnic tables, and a doggy wash off station.

### New Tampa Nature Park

New Tampa Nature Park is a 122-acre parcel of land that connects to the Hillsborough County's Flatwoods Park trail system providing access to miles of trails. Deer, turkey, alligators, bobcats, hogs, snakes, foxes, and many birds inhabit the park. The property languished for years, before it was acquired with help from the Florida Communities Trust Preservation 2000 program and the county's Environmental Lands Acquisition and Protection Program (ELAPP).

### Water Works Park

Water Works Park is a 5-acre expanse of green space along the Hillsborough River in Tampa Heights and is home to Ulele Spring. The spring is Tampa's original source of fresh drinking water and was named for the daughter of a Timucuan Chief who saved the life of a young 16th Century Spanish explorer. The park property, along with a restored and expanded spring area, was completely redeveloped and opened to the public in August 2014. Environmental restoration of the Water Works Park property was conducted under the City's Brownfield Program in order to take advantage of State of Florida Brownfield financial incentives.



### Julian B. Lane Riverfront Park

The 25-acre Julian B. Lane Riverfront Park is located on the west side of the Hillsborough River. Amenities include a state of the art rowing center that included a second floor, community space and rental opportunities; two special event areas; picnic areas; splash pad and playground; a dog park; trails; tennis court; a synthetic turf multi-purpose field; docks with canoe and kayak launch.

*continued on next page*

SUSTAINABLE TAMPA

AUGUST 2019

## Parks Department Honored by Florida Native Plant Society

Cotanchobee Fort Brooke Park received an Award of Honor for the restoration of the park's natural shore line. The concrete seawall and dock were removed and the bank was re-graded and restored along its entire length. Buffers were created through the use of rip-rap, oyster shell mounds and native wetland plantings to establish the shoreline and provide estuary and wildlife habitat. The 6.5 acre park is predominantly planted with native trees, shrubs, grasses and ground covers.



## USF Park

Received an Award of Merit for its environmentally-friendly design. The Riverwalk connection allows visitors to walk from the west side of the Tampa Convention Center all the way to the Channelside district. The park incorporates native plants that provide shade and interest along with views of the shoreline. USF serves as a great example of restoring a small urban site to a naturalized setting while re-creating connection to the river in downtown Tampa.



## Greenways and Trails

Tampa greenways and trails efforts increase public access to recreational and non-motorized transportation opportunities and is designed to link parks, schools, transit bus systems, waterfront areas, and places of cultural and historical significance.



## Tampa Riverwalk

The City was awarded a TIGER grant in the amount of \$10.9 million to complete the final two sections of the Riverwalk and design and construct the Selmon Greenway. The Greenway project stretches 1.7 miles under the Selmon Expressway viaduct from the river to 19th street. The two sections of the Riverwalk consist of the Doyle Carlton section linking the Straz Center to the Water Works Park, and the Kennedy Boulevard Plaza, 1460 feet of walkway over the River, connecting MacDill Park to Curtis Hixon Waterfront Park. The completed Riverwalk stretches 2.4 miles from the Water Works Park down the Hillsborough River and along Garrison Channel to the Channelside District. Solar map signage has been included in areas of the Riverwalk and LED lighting has been used in numerous locations. It also incorporates contemporary shade structures and informational kiosk signage, whose maps and lighting are solar powered.



## Tampa Greenways and Trails Master Plan (Ongoing)

In 2016, the City of Tampa and Hillsborough County Greenways and Trails Master Plans were updated and combined into one document that acknowledges a regional approach to trail and greenway planning, with alignments identified that connect the City of Tampa to neighboring cities and county facilities. The Master Plan increases public access to recreational and non-motorized transportation opportunities and is designed to link parks, schools, transit bus systems, waterfront areas, and places of cultural and historical significance. The planning process is citizen-driven, led by members of local neighborhoods, businesses, and public agencies.

## Clarence Fort Freedom Trail

An exercise trail, 8 feet wide and about 0.4 miles long, and boardwalk was constructed to surround the 3.8-acre Osborne Pond. The half-mile trail has four stops along the way and offers eight pieces of fitness or play equipment. More than 110 trees were planted to complete the inviting look. The trail opened to the community in September 2014.



*continued on next page*



Green Spaces



Green Environment



Green Operations



Green Building



SUSTAINABLE TAMPA

Courtney Campbell Trail Amenities

The Courtney Campbell trail connecting to the Pinellas Trail and beyond is an incredible destination and heavily used. In partnership with Hillsborough County and the Florida Department of Transportation various amenities are planned along the trail: comfort stations with shade, a water filling station, bike repair stations, and enhanced landscaping will provide trail users with additional comforts.

West River Trail at University of Tampa

A trail from Cass to Kennedy was constructed on the campus of the University of Tampa. The segment runs along the Hillsborough River and is expected to connect to a trail behind Tampa Prep and into the redeveloped Julian B. Lane Riverfront Park.



Green Spaces



Green Environment



Green Operations

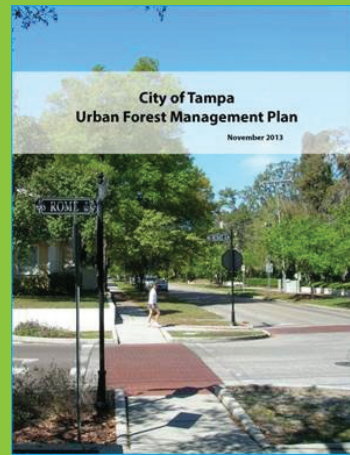


Green Building



# GREEN ENVIRONMENT

The City continues to balance relations between humans and the various natural systems on which they depend through changes in public policy and individual behavior.



Green Spaces



Green Environment



Green Operations



Green Building



Green, Outreach  
& Education

## Florida Green Building Coalition (FGBC)

The City of Tampa was the second city in Florida to reach gold-level certification with an impressive score of 41% for its initial certification. Our re-certification improved on that number and achieved a score of 52%. The FGBC is continually finding new and innovative ways to educate builders, developers, local governments, and consumers about how to achieve a healthier, more environmentally sustainable future.

## Tree City

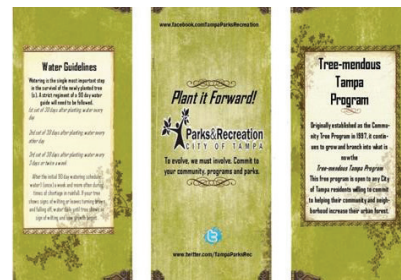
The City boasts over 4 million trees that assist in the removal of air pollutants, provide energy conservation, conserve soil and water, and bring the natural environment into our lives. For almost 4 decades, the City has received the Tree City USA designation by the Arbor Day Foundation for its street canopies, planning efforts, planting programs, and proven urban forestry practices, all of which reduce Green House Gases.

## Urban Ecological Analysis

The City conducts an Urban Ecological Analysis every 5 years in partnership with the Tampa Bay Watershed-Forest Working Group, a consortium that includes the University of South Florida, the University of Florida, and the University of Florida/Hillsborough County Extension office. The study takes a detailed look into the economic and ecological characteristics and values of the urban forest. The results from this assessment serves for the basis of enhancing the understanding of urban forest values, improving or developing science-based urban forest policies, ensures effective planning and management of the urban landscape and provides data for the inclusion of trees within environmental regulations. The model also quantifies urban forest functions such as: energy savings, air pollution removal, carbon storage and sequestration, and compensatory or replacement values, and played a critical role in the City's re-writing of its Tree and Landscape code.

## The Tree-Mendous Tampa Free Tree Program

Was originally established in 1997 and then rebranded in 2013 as part of our commitment to renewing the Urban Forest of Tampa. The program is funded through the City of Tampa's Tree Trust Fund. In addition to planting trees, an educational component was added to help residents by providing the "best management practices" for trees. Since 2013, we have planted almost 3,000 trees for residents of the City of Tampa.



## Working in Neighborhoods-WIN Program

The Working In Neighborhoods program (WIN) was created to beautify thoroughfares, medians, and parkways, and reduce litter, graffiti and illegal dumping, to both restore and enhance the City's environment by removing pollutants and harmful waste and improve the quality of life for citizens.

*continued on next page*

SUSTAINABLE TAMPA

AUGUST 2019



## Annual River Cleanup

Tampa's Water Department and Solid Waste Department set up an environmental education booth at the Lowry Park Boat Ramp's Annual Hillsborough River & Coastal Cleanup. Debris of all sizes was removed from the waterways during this event which is hosted annually by the City's partner, Keep Tampa Bay Beautiful.



## Storm Drain Markings

Keep Tampa Bay Beautiful, with support from the City of Tampa, hosted a series of land and water-based cleanups, storm drain markings and watershed education activities throughout 2016 to develop environmental awareness, stewardship and a respect for our natural resources.

## S.W.E.E.P. Program (Ongoing annual program)

The annual Solid Waste Enhanced Environment Program (SWEET) provides 40 weeklong neighborhood bulk trash pick-ups. Over the past decade, SWEET program can be credited with enhancing Tampa's neighborhoods by removing over 27,000 tons of bulk trash items and debris.

## Fertilizer Ordinance

The city enacted an ordinance to improve water quality in our lakes, streams, rivers and bays. The ordinance establishes a restricted period from June 1 - September 30, when the application of lawn and landscape fertilizer containing nitrogen and/or phosphorous is not allowed. The ordinance is designed to reduce the potential of nitrogen and phosphorous carried into our waters with storm water runoff and is supplemental to the rules of the Environmental Protection Commission of Hillsborough County.

## Multi-Purpose EPA Pilot Grant

The City was awarded a \$400,000 EPA Brownfields program grant to conduct assessments and cleanup activities, and to secure funding for the site located at 1103 N. Nebraska Avenue. The goal of program is to clean up America's land, boost local economies and create jobs while protecting public health. The Economic and Urban Development Department manages the City's Brownfield Program to rehabilitate and redevelop contaminated site, typically old industrial sites in urban areas.

## Ulele Spring

The Ulele' Spring restoration has created a basin that allows the water to pool on its way toward the Hillsborough River. The immediate shoreline to the spring has been restored with mangroves and the spring is now teeming with fish and wildlife. Manatees also frequent the spring itself. Volunteers from The Krewe of Princess Ulele, Green Artery, Rowers Crewe, Tampa Heights Civic Association, Tampa Federation of Garden Clubs, and Sceda Ecological Associates, Inc. planted a variety of native plants surrounding the restored Ulele Spring. More than 4,000 plants, ranging from cordgrass species to spider lily were planted. Plants were paid for by the Tampa Bay Estuary Program and the Florida Freshwater Fish and Wildlife Commission. The spring restoration component of the park was funded through a partnership with the Southwest Florida Water Management District and the City of Tampa, as well as assistance from Ecosphere Restoration Institute, the Tampa Bay Estuary Program, National Oceanic and Atmospheric Administration, and United States Fish and Wildlife Service.



Green Spaces



Green Environment



Green Operations



Green Building



Green, Outreach  
& Education

## InVision Plan

The City was awarded a \$1.2 million Sustainable Communities Challenge Grant in 2011 from the U.S. Department of Housing & Urban Development to develop a plan for the Nebraska-Hillsborough Avenue Primary Transit Corridor. The InVision Team prepared a plan focusing on re-centering downtown around the Hillsborough River and connecting area neighborhoods in a pedestrian, transit friendly manner.

## New Urbanism & Form-Based Zoning

The City continues to modernize its land development codes by incorporating New Urbanism and Form-Based Zoning concepts to promote urban redevelopment. These concepts are designed to address not just the physical form of buildings but also surrounding streets, blocks, and public spaces in order to create, protect, and create sustainable communities. The concentration of new growth within the existing core reduces infrastructure needs, increases walk-ability and use of public transit.

## Solid Waste Code Updates

The Department of Solid Waste & Environmental Program Management is working with the Legal Department to update its code of ordinances to reflect improvements and efficiencies in solid waste collection services and its impact on the environment. These changes will offer incentives in several areas. The Department will also strengthen sections of the code to discourage contamination of recycling containers by residential customers and will increase education, monitoring and enforcement. Code revisions will also include registering recycling collectors and dealers to numerate the volume of waste being diverted from the waste stream.



Green Spaces



Green Environment



Green Operations



Green Building



Green, Outreach  
& Education

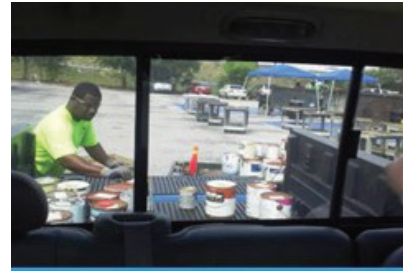
# GREEN OPERATIONS

The City is dedicated to implementing long-term sustainable methods of operations that become a natural part of our work and continually reduce our carbon footprint.



## Inter-local Agreement for Expanded Collection Program

In January of 2016, the City entered into an Interlocal Agreement with Hillsborough County to expand this program. Under this agreement, City residents are able to dispose of household hazardous waste 3-times per month at 3 alternating locations, and dispose of electronics and paint 6-days per week at 4 Community Collection Centers.



## Energy Efficiency and Conservation Block Grant

The City received a \$3.7 million Energy Efficiency and Conservation Block Grant (EECBG) to implement programs aimed at reducing total energy use, improving energy efficiency in the transportation and building sectors. The City installed Energy Management Systems at Old City Hall, the Tampa Police Department and Tampa Fire Rescue headquarters to reduce electrical consumption by controlling operational hours of lighting and equipment, fresh air usage and interior space temperature. Savings range from 10% to 25%.

## LED Lighting for Traffic Signals & Street Signs

All City traffic signals (480 intersections) have been converted from incandescent to LED lighting, reducing power demand by 70-80% per lamp, reducing electricity cost by about 60-70%.

## Retrofit of Parking Garage Lighting

The City has replaced inefficient lighting with energy efficient induction lights in five municipal parking garages, reducing electrical use by approximately 55% equating to an annual savings of about \$315k. Retrofitting of the downtown Whiting Garage and Police Department are currently underway.

## PowerDMS

PowerDMS is an electronic document management system implemented within the City of Tampa and currently in use at the Tampa Police Department and Tampa Fire Rescue. It is secure, online storage and management for internal policies, procedures, accreditation standards, manuals, trainings and more. By transitioning to a paperless central repository, it eliminates the need to produce paper copies of manuals and books that are updated quite frequently. PowerDMS also tracks and estimates of paper, and trees, saved by the agency utilizing the software.

## Solid Waste Department

The Department of Solid Waste and Environmental Program Management is using reclaimed water at the McKay Bay Refuse-to-Energy facility and cooling tower. The McKay Bay Facility can use up to 200 million gallons of reclaimed water instead of using potable water; conserving this precious resource.

*continued on next page*

SUSTAINABLE TAMPA



## McKay Bay Transfer Station

The City took over operations at the McKay Bay Transfer Station in October 2011. The transfer station is used to sort mixed loads of waste into separate waste streams that can be recycled (yard waste and white goods), used as fuel at the refuse-to-energy facility or landfilled. The City has been able to decrease the amount of waste previously landfilled, increase the amount used as fuel at the refuse-to-energy facility and is looking to increase the recycling of C&D debris in the future. The McKay Bay Scalehouse added an automated scale in July 2009 to speed up the processing of Solid Waste & Environmental Program Management trucks and reduce wait (idle) times for customers.



## Clean Cities Coalition

The City of Tampa was one of the first municipalities to join and support the creation of Tampa Bay Clean Cities Coalition. The Mission of Clean Cities is to advance the energy, economic, and environmental security of the United States by supporting local actions to reduce petroleum use in transportation. It is especially important to reduce our consumption of petroleum products as we continue to find transit options and improved land use development patterns. Part of DOE's Vehicle Technologies Office, Clean Cities has saved more than 5 billion gallons of petroleum since its inception in 1993.



## Recycling

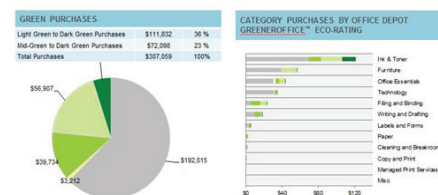
Each year the City recycles up to 17,000 to 18,000 tons of material from residences and commercial businesses.

- The Department of Solid Waste & Environmental Program Management continues to increase recycling through outreach and education efforts in our Parks and Recreations Centers, City buildings, commercial businesses, schools and special events.
- The Department of Solid Waste & Environmental Program Management launched a new "Be Smart, Use Your Cart" program for City of Tampa residents. Over an 18-month period, the 14-gallon blue bins currently used were replaced with new 95-gallon green recycling carts, complete with tracking technology. The tonnage of recyclables collected has been more than doubled since the implementation of recycling carts.
- The City continues to expand and improve the recycling options available to residents and businesses with the addition of new commercial recycling accounts; the establishment of new neighborhood recycling collection centers; enhanced collection programs for special events; and the provision of recycling collection services to occupied City of Tampa facilities and Parks and Recreation facilities.
- In 2016, the City of Tampa's Department of Solid Waste and Environmental Program Management expanded its recycling program and sustainability initiatives to include all City of Tampa government buildings. This enhancement will also assist the State of Florida with meeting its goal to recycle 75% of all waste generated by the year 2020.

## Green Spend Purchasing

The City as a whole, achieved a 54% "Green Spend" in its use of various office products. Each year, we will strive to improve the percentages as our departments are made aware of more sustainable products. The City purchases green and or environmentally friendly products for 21.3% of its office supply needs. Office supply orders are made electronically via the internet using P-Cards, thus eliminating the need to print and mail hard copy orders. The City currently participates in the Hewlett-Packard (HP) Recycling Program. Original HP ink and LaserJet cartridges are returned to HP.

### Green purchases by Office Depot GreenerOffice™ eco-rating



*continued on next page*



Green Spaces



Green Environment



Green Operations



Green Building



Green, Outreach  
& Education

SUSTAINABLE TAMPA

## Green Seal Environmental

Janitorial contracts require that the vendor supply “Green Seal Environmental” products when available. The City has established a goal to clean and maintain all parks, community centers, parking lots and garages with chemicals and equipment which are more in line with the Green Seal Environmental Standards. Bidders are required to provide a detailed list of the products and equipment, including applicable Green Seal documentation, required to perform the services of their award. The City shall have the right to require the Awardee to use Green Seal products and equipment as they become more available.

## Solar Trash & Recycling Compactors

The City continues to collect data on its six solar-powered trash compactors located downtown. The goal is to replace 32- gallon trash cans saving money and reducing greenhouse gas emissions by fewer pickups by a city vehicle. The device is powered by a solar panel on top that recharges a 12-volt battery. An electric beam triggers a ram that compacts garbage until it reaches maximum volume. When the receptacle is ready to be emptied, an electronic message is sent to a Website monitored by city sanitation employees.



## Solar Parking Pay Stations

The City continues to save energy with its 146 Solar Parking Pay Stations with the elimination of conduits, power or the need to set up power meters at the stations. The City's reduces its carbon footprint by using less power.

## Electric Vehicle Stations

The City received 10 electric vehicle charging stations at no cost in October 2011 to help reduce greenhouse emissions. The stations are part of the Charge Point America program sponsored by Coulomb Technologies through the American Recovery and Reinvestment Act and the Transportation Electrification Initiative administered by the Department of Energy. The goal is to provide electric vehicle charging infrastructure to regions in the US and foster the adoption and readiness of EV's throughout the country. The stations are located at the following public parking garages: Fort Brooke, Tampa Convention Center, South Regional, Twiggs Street, Centro Ybor, Palm Avenue, William F. Poe, and the Jackson Street surface lot.

## Energy Savings

Facilities Management continues its upgrade program for the city's buildings, offices, parks and properties to implement energy saving measures such as lighting upgrades, roof upgrades and installation of energy management systems at various locations. Energy management components optimize electrical consumption in city facilities. Energy reduction is accomplished through controlling operational hours of lighting, equipment, fresh air usage and the interior space temperature.

## LED and Induction Lighting (Ongoing)

Several thousand high-pressure sodium lights with induction lighting have been replaced in the City's Parking Garages resulting in a 50% savings in electricity costs along with brighter, whiter light, allowing for clearer visibility. The Parking Division has done upgrades of lighting to LED lights on 60% of the surface parking lots.

## Construction Debris Recycling

Cold-in-Place Asphaltic Recycling: The process achieves cold in – place recycling of bituminous pavements at various locations throughout the city.



Green Spaces



Green Environment



Green Operations



Green Building



Green, Outreach  
& Education

# GREEN BUILDING

The City is committed to designing and constructing more environmentally friendly buildings using proven LEED certified practices and systems.



Green Spaces



Green Environment



Green Operations



Green Building



Green, Outreach  
& Education

## Chapter 17.5 Sustainability

17 -5-203. Requires that City Funded Construction and Renovation of Structures to Comply with LEED Silver Standard.

- a. All new construction of municipal buildings, regardless of the source of the funds, in excess of 5000 square feet of air conditioned space, shall be built to satisfy, at a minimum, the most current United States Green Building Council (USGBC) LEED Silver standard.
- b. For any renovation of existing municipal buildings, all building materials replaced shall be done so with consideration of their energy efficiency ratings as recognized by the USGBC for their sustainable qualities, and with recycled products whenever available and appropriate.
- c. In the event that it is determined by the Administration that it is not feasible to construct or renovate a building or structure to this standard, compliance with this section shall not be required and the CGO will identify the project in his/her report to City Council.

## LEED Certified Buildings

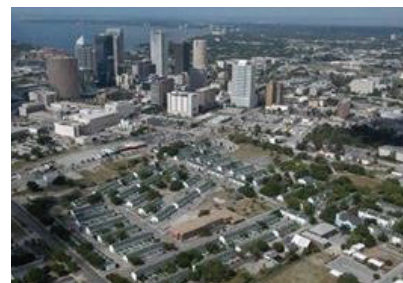
The City promotes LEED (Leadership in Energy & Environmental Design) standards per City Code, Chapter 17.5. It also allows for fee rebate incentives.

## Springhill Park Community Center

Silver-Level LEED standards were met for the Springhill Park Community Center, located in the Sulphur Springs area. The 16,000 square foot building includes high efficiency HVAC and lighting systems, CoolRoof rated materials, use of regional and recycled materials and Florida-friendly landscaping.

## ENCORE

ENCORE is a LEED certified development by the Tampa Housing Authority, using sustainable construction practices and efficient energy and water systems. The 28-acre Encore includes 794 mixed-income apartments, 300 condominiums or other privately owned units sold at market rates and 268,000 square feet of offices and stores, including a hotel, museum, school and grocery store.



## Fire Stations

New fire stations are constructed using LEED Silver standards. Building sustainability features include high efficiency lighting and controls, solar-powered exterior lighting, an energy-efficient HVAC system, solar-powered water heating, and use of recycled materials. Site sustainability elements include preservation of the onsite wetlands, Florida-friendly landscaping, and the incorporation of bioswales into the stormwater retention system to provide runoff water quality enhancement.

SUSTAINABLE TAMPA

*continued on next page*

AUGUST 2019



## Affordable Housing

The City of Tampa has continually provided funding for green, sustainable, energy efficient, affordable housing. Projects listed below demonstrate this commitment. Each of these projects went through a competitive Request for Proposal (RFP) process where they were specifically awarded points for constructing green and sustainable buildings and systems, creating environmental benefits internal and external to the project and improving the overall quality-of-life for its residents. Phase-II of the Nehemiah Project in Sulphur Springs will bring 20 new, energy efficient, single family homes to the neighborhood.

## Eco Oaks

Eco Oaks is a Platinum level LEED certified 18 unit multi-family project serving female veterans and their children. The City of Tampa awarded the project \$3,747,709.00 in funding.

## Nehemiah Phase II

An important element of the Nehemiah Project was the construction of 11 new single family homes. These homes are energy efficient, HERS rated and were offered to income qualified families to enjoy the benefits of energy efficient, sustainably designed homes. The City has made available an additional 20 lots to build HERS rated energy efficient single family homes. Thus continues the work of the entire Nehemiah Project.

## Tampa Convention Center

- **Lighting;** An ongoing program to replace older lighting technologies with LED lighting is being done at the Tampa Convention Center. The Convention Center is one of the few convention centers to have LED lighting in the exhibit halls. The efficiency of LED's and the extreme long life reduces energy and maintenance costs.
- **Recycling;** The Tampa Convention Center (TCC) has improved its recycling efforts by adding additional recycling containers within the building and around Sail Pavilion. In 2016 the Tampa Convention Center recycled over 312 cubic yards of commingled material which includes, aluminum, plastic and mixed-paper products. In addition to the commingled recycling TCC recycles over 77 tons of source separated cardboard annually.
- **CoolRoof;** The Tampa Convention Center has 17.8 acres of energy-star reflective roof covering to minimize solar heat loading by reflecting infrared energy up and away from the building. This reduces the amount of energy needed for cooling and reduces the "heat island" effect at night.
- **Energy Management Systems;** Energy Management Systems is a computer-aided tool is used to monitor, control and optimize the performance of HVAC systems and lighting in office buildings. Energy Management Systems utilize CO2 demand ventilation reducing energy consumption and helps lower carbon footprint. This is used throughout the City to include the Tampa Convention Center. The Convention Center is able to match the cooling and heating needs to the varying levels needed for different types of events and the number of people present in the building at the particular time.
- **Efficient Chillers;** The Tampa Convention Center installed two "TurboCor" Chillers that utilize magnetic bearing technology, allowing electromagnets to "float" the rotating parts. This process reduces energy consumption for air conditioning and eliminated the need for the oil changes and disposal. These units combined produce 400 tons of cooling capacity. Overall the Convention Center has six chillers with a combined capacity of 4500 tons.
- **Daylight Harvesting;** The Tampa Convention Center practices daylight harvesting to utilize sunlight while turning off lighting during the day. This saves energy and reduces heat that is normally produced by the lighting fixtures. Additionally, the life span of the bulb is extended.
- **Energy Star Partner;** The Tampa Convention Center is an Energy Star Partner. Energy Star is a federal EPA program that ranks buildings by their energy consumption compared to others of similar size and use. TCC ranks very high at 84 percent of building efficiency as compared with other convention centers. By utilizing green building operations techniques, the Convention Center has seen a 12 % decrease in energy usage since 2013 over prior years, helping offset power rate increases.
- **Escalators;** The Tampa Convention Center replaced 10 escalator units with new, energy efficient units, that utilize a drive system that consumes 20% less power per unit. Additionally, these units are sealed, require no petroleum lubricants, and are environmentally friendly. The elevators are being replaced with modern more efficient drive units during 2017/18.



*continued on next page*



Green Spaces



Green Environment



Green Operations



Green Building



Green, Outreach  
& Education

SUSTAINABLE TAMPA

Fast-Track Plan Review

As an incentive for using green building technologies, the City provides a Fast-Track Plan Review process to anyone planning to build a sustainable project. Green design strategies include recycling construction and demolition waste, using recycled material in concrete, using Forest Stewardship Council (FSC) Certified Wood for framing, installing graywater system, installing Energy Star-qualified windows, and using renewable flooring materials.



Green Spaces



Green Environment



Green Operations



Green Building



Green, Outreach  
& Education

# GREEN, OUTREACH & EDUCATION



## Learning Gate Eco Fest

The City co-sponsored and participated in EcoFest, a community event organized by Learning Gate Community School, the City of Tampa and the USF Patel College of Global Sustainability to celebrate the many businesses, organizations, and individuals in the Tampa Bay area dedicated to the principles of sustainability – Ecology, Equity and Economy. Activities included live music, workshops, demonstrations, informational booths, green living products and services from local artists, green businesses, environmental organizations, alternative health practitioners, renewable energy specialists, and organic farms and gardens with fresh local produce.



## Tampa Heights Community Garden

The Tampa Heights was twice named the best community garden in the State of Florida which is sponsored by a garden club (the Tampa Garden Club), and last year was named the best community garden in the Deep South region of the National Garden Club. They have grown from their original 17 gardens to 86, including several youth gardening groups, a butterfly garden, herb garden, group strawberry patch, and blueberry garden. We currently have three gardens which provide veggies to the seniors in the Ella at Encore.



## 25 years of Summer Camps at Mangrove Marcus

The Mangrove Marcus Adventure Team provides a week of hands on activities in salt and fresh water locations while exploring aquatic habitats and developing eco-citizenship. This very popular program gives campers a chance to snorkel, swim, use seine and dip nets and visit a variety of marine environments.

## City of Tampa Parks and Recreation Department receives National Award

The City of Tampa Parks and Recreation Department recently received a National Excellence in Innovative Programming Award by the National Recreation and Park Association (NRPA). Each year, NRPA National Awards are presented to individuals and agencies across the U.S. to honor their efforts—both professional and personal—in the field of parks and recreation. The award highlights the efforts and impact an agency/organization has made in promoting or increasing the awareness of the benefits of parks and recreation in their community through offering a variety of programs. This award recognizes the agency that best demonstrates programming innovation in two of the three NRPA Pillars – conservation, health and wellness, and social equity.

## The Mayor's Neighborhood University (MNU)

The MNU provides a formal leadership training program for neighborhood leaders. In addition, the MNU builds upon the existing City's Neighborhood Empowerment program offering enhanced technical support services for the City's neighborhoods. As part of an ongoing educational opportunity the Green Officer presents to each class of the MNU to discuss ways citizens and neighborhoods can help forward their City's green and sustainable initiatives.

*continued on next page*



Green Spaces



Green Environment



Green Operations



Green Building



Green, Outreach  
& Education

SUSTAINABLE TAMPA



## University of South Florida Student Green Energy Fund

The City continues to serve on the review panel for projects submitted for consideration for funding from the USFSGEF.

## TECO partnership

TECO partnered with Tampa Police and gave over 10,000 CFL energy efficient light bulbs that use 75% less energy to disseminate in our community to "light up the night". The program focuses on illuminating residents homes to deter crime and create a safe environment. It also makes it easier for Law Enforcement to locate an address. The bulbs are disseminated by the police at porch roll calls in the community, neighborhood watch meetings and as officer see the need when responding to residences. The program also educates the community how to report street light outages through the cities Customer Service Center on line.

## Recycling - Outreach & Education

The City of Tampa's Recycling Team focuses on educating others on how to recycle right! The City leads by example to promote the benefits of recycling to Tampa's local environment and economy. "Our Department is excited to be able to offer this service to a greater audience.

- Continued participation in the annual Great American Teach-In, visiting 8 schools; and educating over 1600 students on the importance of recycling and environmental stewardship.
- Partnership with the Parks & Recreation Department and WM-Recycle America to offer tours to Summer Camps and offer tours to public groups and schools.
- Together with the University of South Florida, College of Sustainability, the SW&EPM Department joined the Bulls as they hosted Tampa's 1st - National College Game Day Recycling Challenge at a home game at Raymond James Stadium.
- Increased participation of the Department's 3R's Poetry & Arts Recycling Contest.
- Continued recycling and outreach at Special Events, 28 events.

## Annual Paint Your Heart Out Tampa!

This city-wide program lends a helping hand to low-income, elderly citizens in the community. The assistance to upkeep homes allows people to remain in their house and help keep neighborhoods and the environment clean and free of debris and litter.



Green Spaces



Green Environment



Green Operations



Green Building



Green, Outreach  
& Education