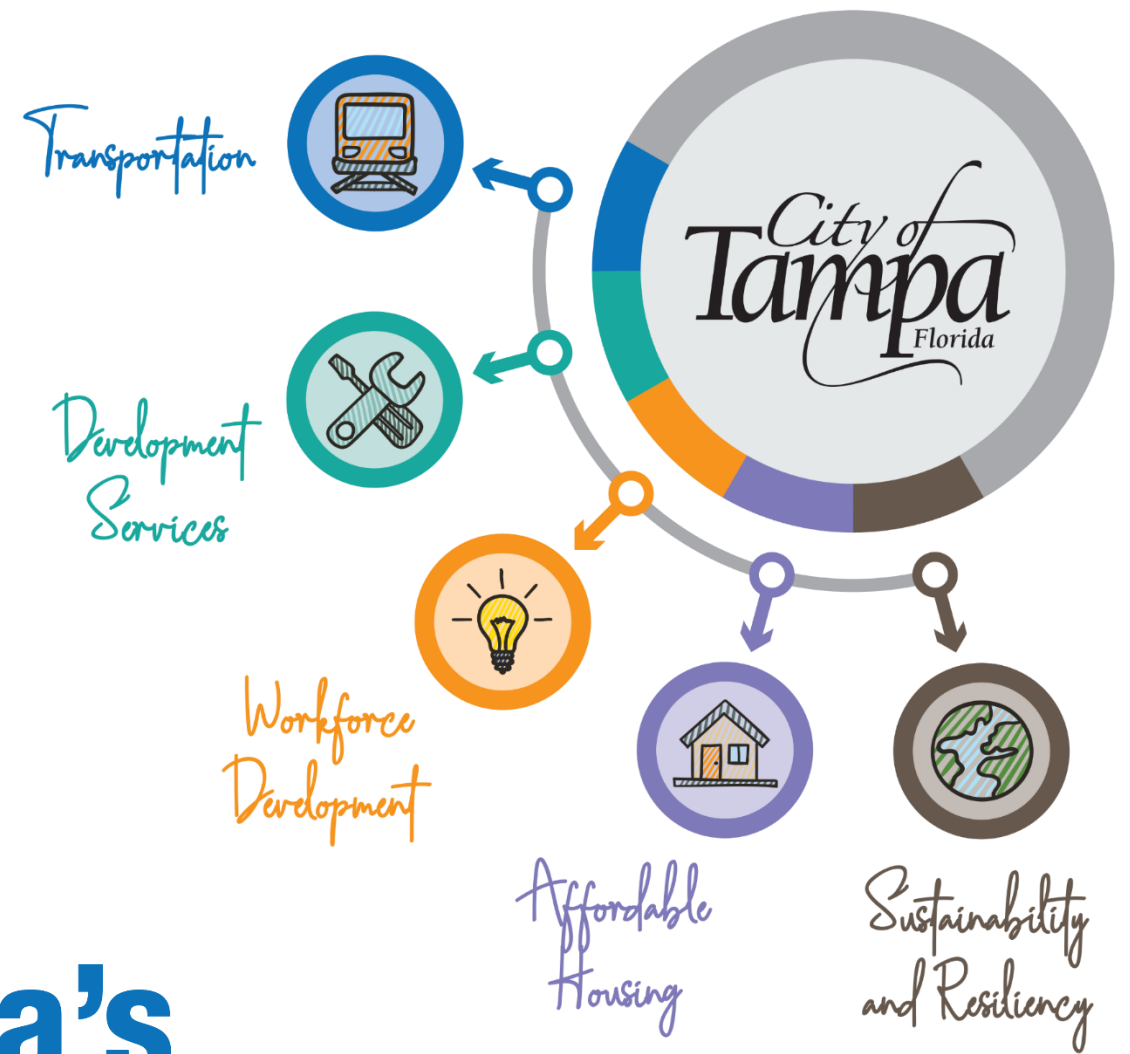
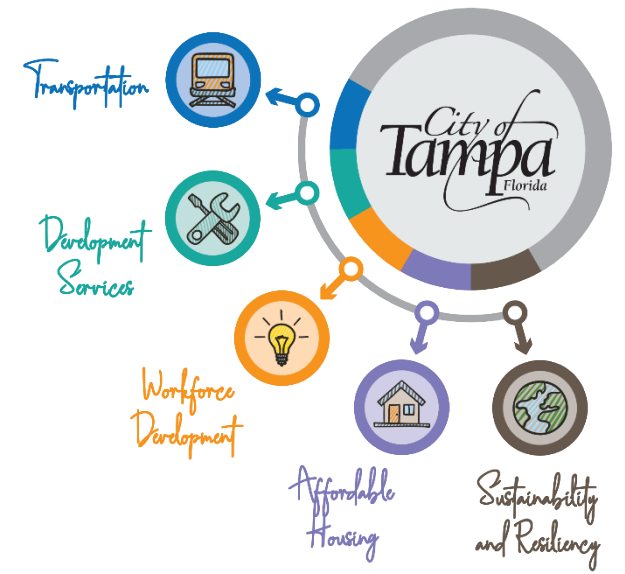


Mayor Jane Castor

Transforming Tampa's Tomorrow

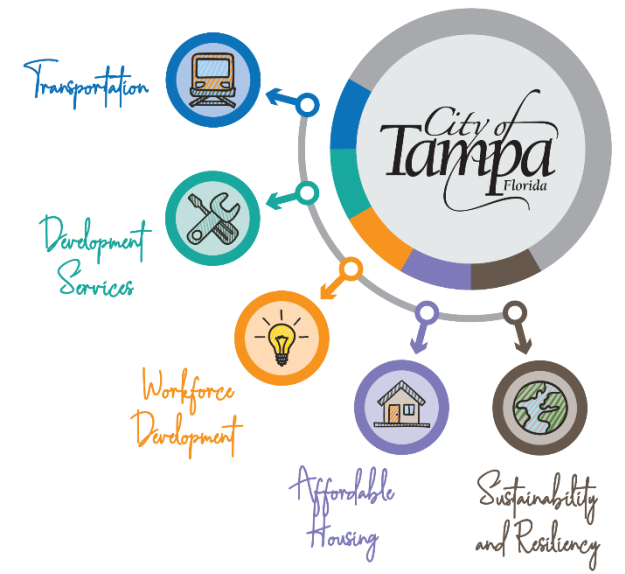
Chair: Carole Post **Co-chairs:** Sonya Little, Hon. Harry Cohen





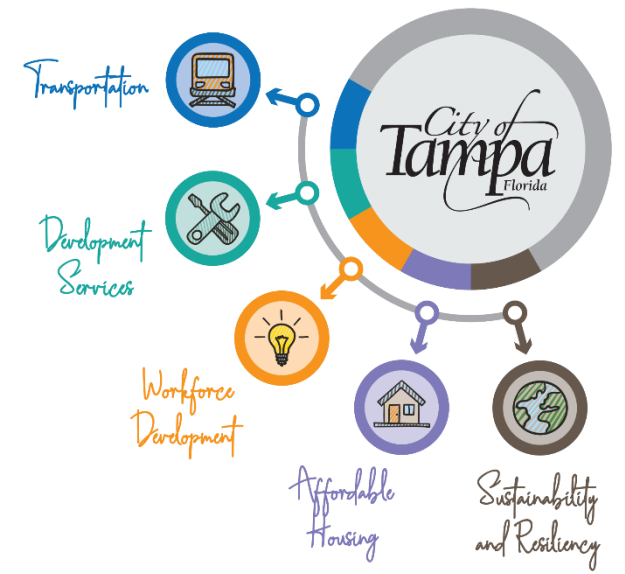
WELCOME

Mayor's Transportation Advisory Team
Kick-Off Meeting
Monday, June 24, 2019



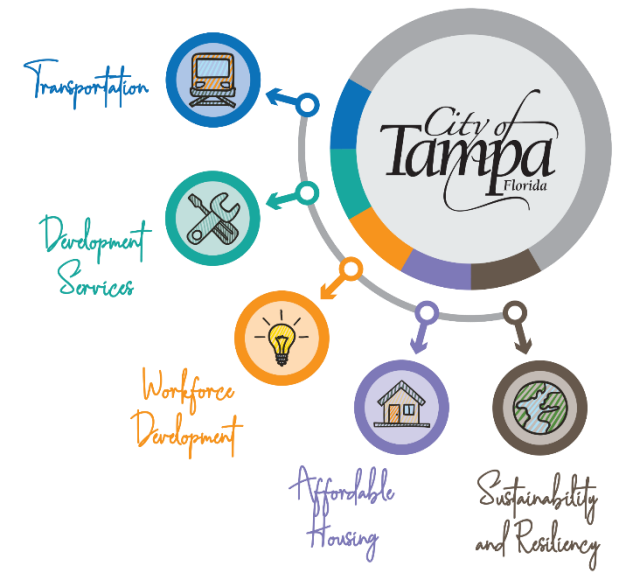
INTRODUCTIONS

Mayor's Transportation Advisory Team



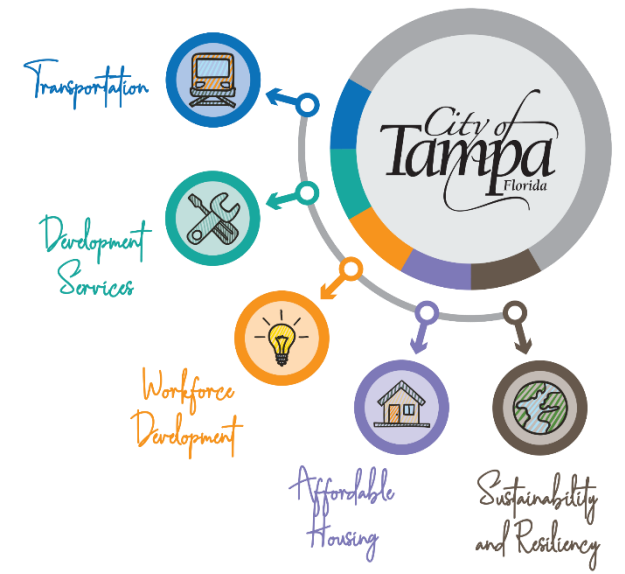
STAFF BRIEFINGS

Mayor's Transportation Advisory Team



CURRENT STATE PRESENTATION

Mayor's Transportation Advisory Team

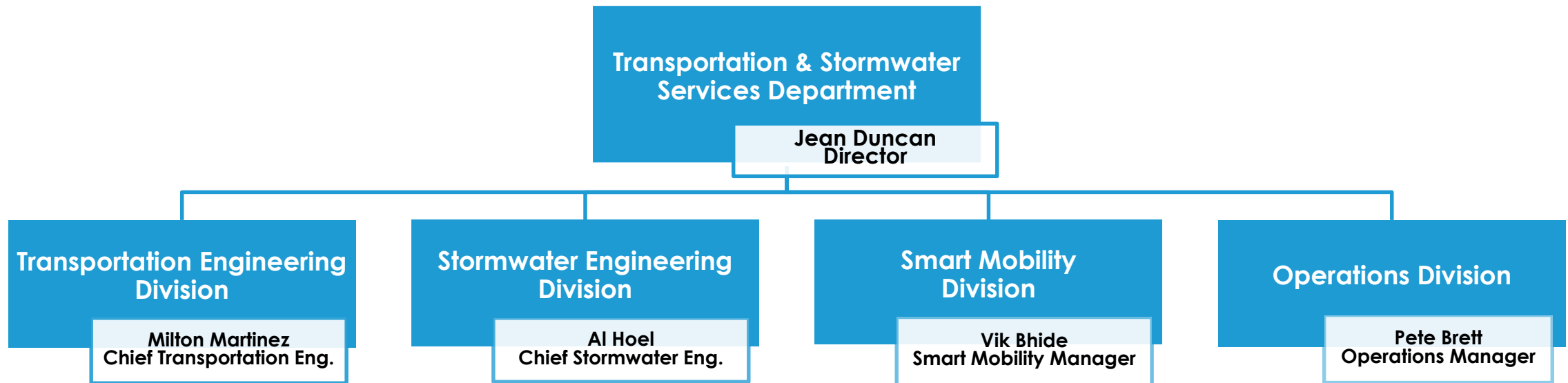


Current State Overview

Transportation and Stormwater Services Dept.

Transportation Advisory Team

Organizational Structure



Current Status Overview



- Mayoral Commitments
- Strategic Planning Approach and Priorities
- Quick Wins
- Basis for Long-term CIP/Operating Budget

Mayoral Commitments

- Develop first-class transportation system that is affordable, accessible and innovative
- Connect businesses and communities through multimodal options
- Improve public safety
- Promote “Quick Wins”



- Achieve **VISION ZERO** on city transportation facilities
- Prioritize walking and biking for short trips
- Support transit at the centerpiece of an integrated multimodal transportation system for long trips
- Incorporate equity, access, and sustainability in all transportation initiatives

Strategic Planning Approach and Priorities *City of Tampa* Florida

- Short-term (FY20 and FY21)
- Long-term (FY21 to FY49)



- **Resurfacing** – in-house opportunities
- **Sidewalks** – focus around schools and along City Arterial/Collector roadways
- **Lighting** – coordination with TECO



Basis for Long-term CIP/Operating Budget



- Comprehensive Approach
 - Local Roadways (Neighborhood approach)
 - Collector & Arterial Roadways (Corridor approach)
- Integrated Planning with other Departments, Agencies and Stakeholders



Hillsborough MPO
Metropolitan Planning
for Transportation

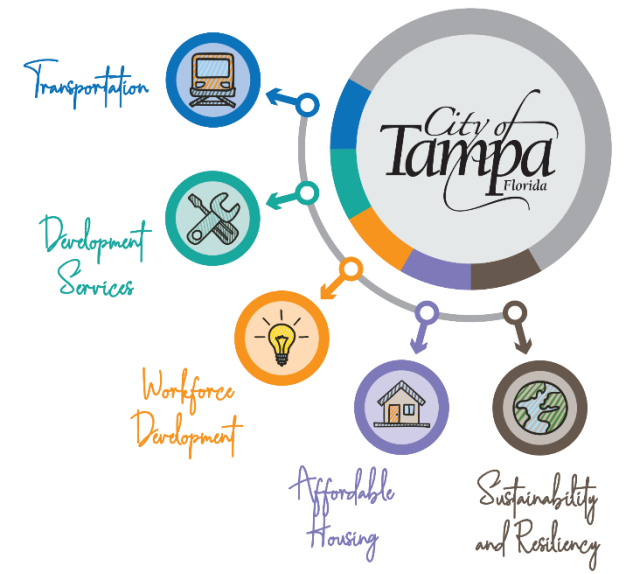


Citywide Mobility Master Plan

- Re-evaluate needs based on significant increase in revenue
- Expanded Programmatic Planning Efforts
- Prioritize needs and develop Capital Projects
- Programmatic Funding
- Incorporate Vision Zero, Equity, Health in all Policies

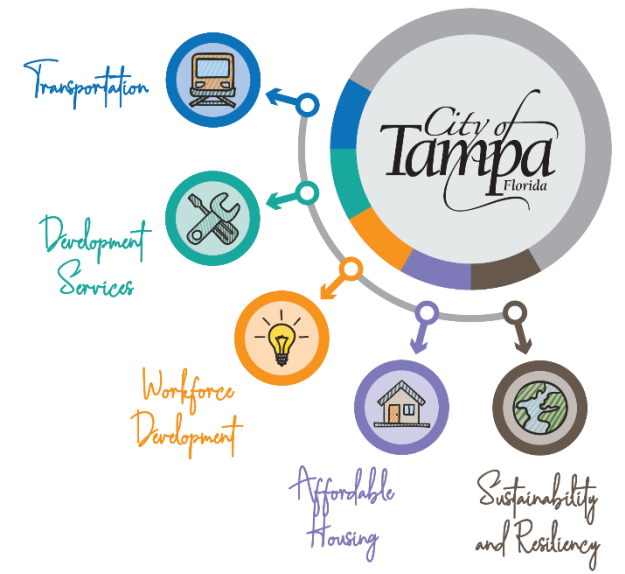
- Procure Program Management Support Services
- Strategic recruiting and development of in-house expertise
- Strategic investment in regional and national resources
- Enhance community engagement
- Continue leveraging grant funding

THANK YOU



ADVISORY TEAM DISCUSSION

Mayor's Transportation Advisory Team



NEXT STEPS

Mayor's Transportation Advisory Team