

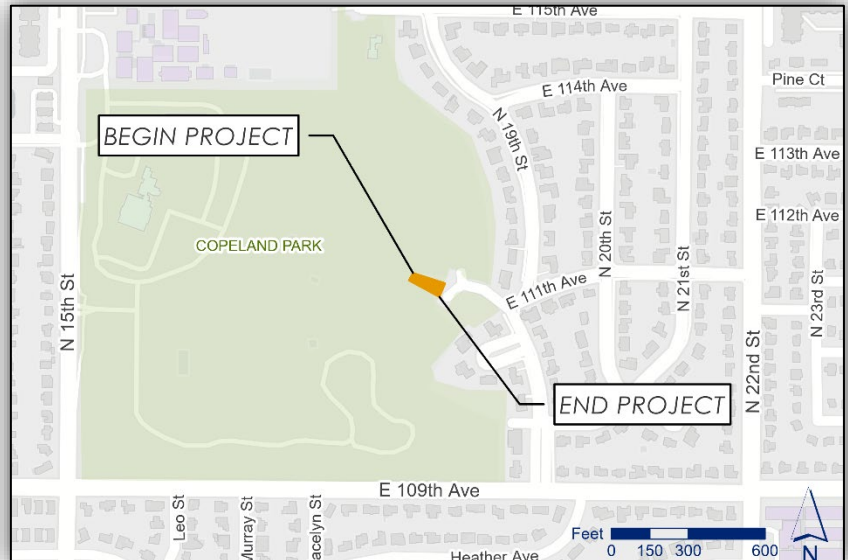
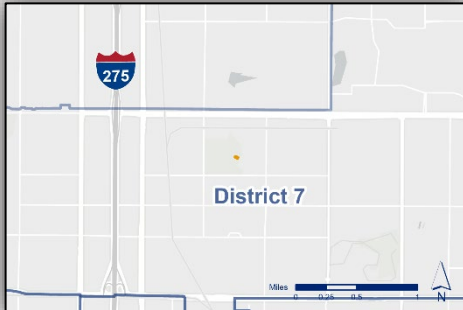


## Mobility Department Stormwater Engineering Division

306 East Jackson Street  
Tampa, Florida 33602

[tampagov.net/tss](http://tampagov.net/tss)

# Copeland Park Pump Station



## Project Phase

PLANNING

DESIGN

PROCUREMENT

CONSTRUCTION

CLOSEOUT

TO LEARN MORE ABOUT WHAT ACTIVITIES ARE COMPLETED DURING EACH PHASE OF A PROJECT, PLEASE CLICK [HERE](#) or visit <https://www.tampa.gov/projects>

## PROJECT DETAILS

**Neighborhood:** University Square  
**Council District:** 7  
**Community Redevelopment Area (CRA):** Not in CRA  
**Project ID:** 1001370  
**Department ID:** SW50009  
**Contract ID:**

**PROJECT COST TOTAL EST.: 325 K**

## ESTIMATED SCHEDULE

**Construction Year:** 2025  
**Projected Start Date:** Q1 2025  
**Projected End Date:** Q3 2025  
**Funding Source:** Stormwater Improvement Fee

## CONTACT

**Brett Sillman**  
**813-274-1856**  
[Brett.Sillman@tampagov.net](mailto:Brett.Sillman@tampagov.net)

## PROJECT DESCRIPTION

This project is to construct a stormwater pump station to address flooding conditions in Copeland Park. Currently, a temporary pump is utilized to drain the low-lying area. A permanent pump station is proposed to replace the need for a temporary pump. This station will be controlled remotely through the City's SCADA system.

## BENEFITS TO THE COMMUNITY

Relieve flooding and improve traffic flow and safety.

Note: The cost and schedule data shown here are the City's current best estimates and are subject to frequent change.