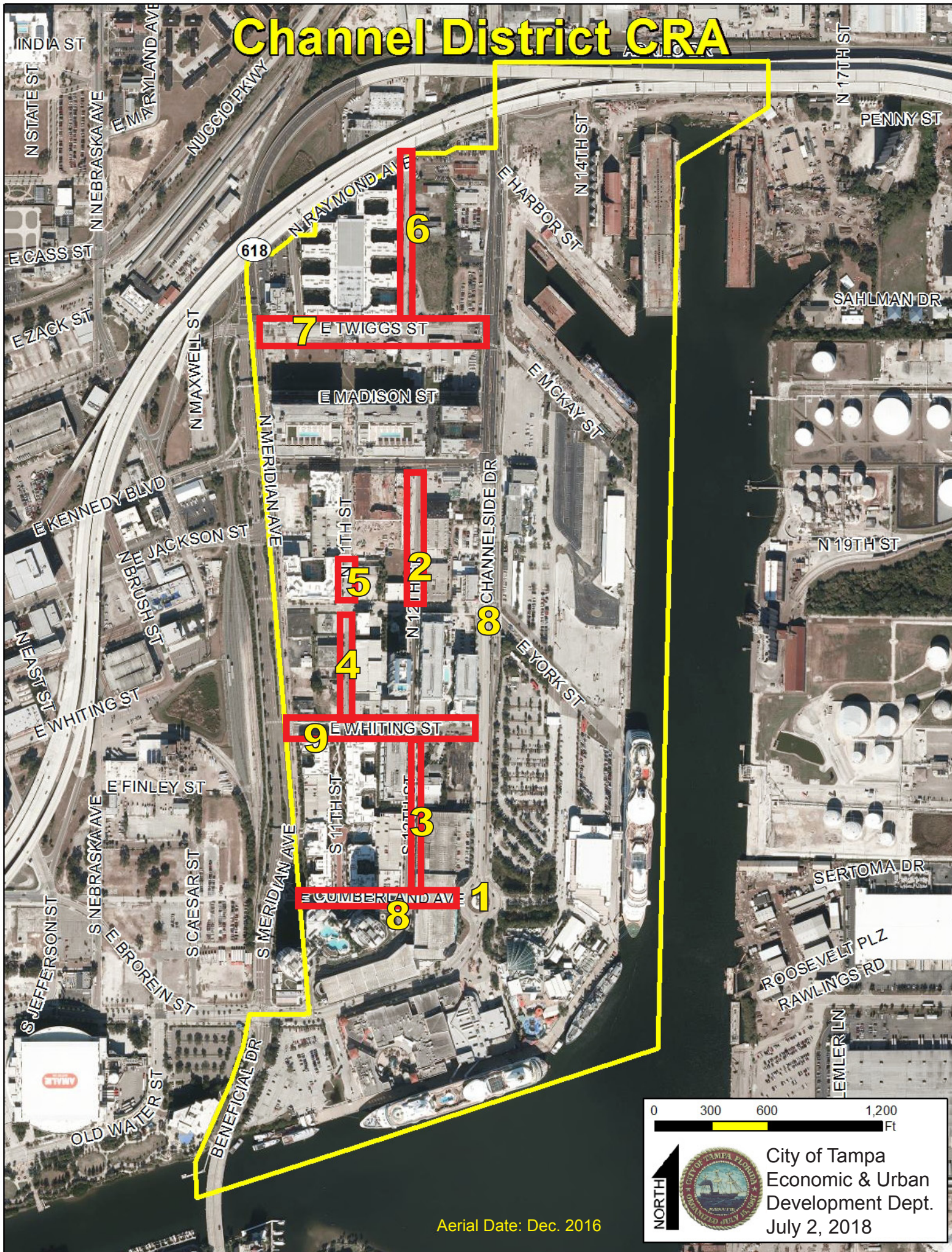


Channel District CRA



Aerial Date: Dec. 2016

0 300 600 1,200 Ft

NORTH

City of Tampa
Economic & Urban
Development Dept.
July 2, 2018

18-D-00038 Channel District Improvements – Design

18-C-00039 Channel District Improvements – CM at Risk

Map Key	Title	Remarks	RFQ Services Needed
1	Channelside Drive: Kennedy to Cumberland	Under Design in Separate Agreement	CM Only
2	12th Street Segment C: East half of roadway plus utilities	Under Design in Separate Agreement	CM Only
3	12th Street Segment A: Utilities	n/a	Design & CM
4	11th Street Segment B: Whiting to Washington Intersection improvements	n/a	Design & CM
5	11th Street Segment C: Kennedy to Washington Streetscape	n/a	Design & CM
6	12th Street North of Twiggs Drainage and sidewalks	n/a	Design & CM
7	Twiggs: Kennedy to Meridian Sidewalks and utilities	n/a	Design & CM
8	Cumberland Avenue: Channelside Drive to Meridian	n/a	Design & CM
9	Whiting Street: Channelside Drive to Meridian Avenue	n/a	Design & CM
-	District wide: Add trash cans, bike racks, and benches	n/a	Design & CM
-	District wide: Convert on-street parking to paid on-street parking	n/a	Design & CM